

NOTES:

1. THESE PLANS SHOW A CONCEPTUAL EROSION CONTROL PLAN, THE CONTRACTOR MUST SUBMIT A TEMPORARY EROSION CONTROL PLAN FOR APPROVAL.
2. TEMPORARY EROSION CONTROL MEASURES ARE CONCEPTUALLY SHOWN. THE CONTRACTOR MAY RELOCATE TEMPORARY MEASURES TO IMPROVE EROSION CONTROL WITH APPROVAL OF THE RESIDENT ENGINEER AND ON SITE COORDINATOR. SILT FENCE SHALL NOT BE INSTALLED ACROSS CONTOURS.
3. THE CONTRACTOR SHALL USE OTHER TEMPORARY EROSION CONTROL MEASURES AS NECESSITATED BY THE SEQUENCE OF CONSTRUCTION OR AS DIRECTED BY THE RESIDENT ENGINEER AND ON SITE COORDINATOR.
4. REFER TO TEMPORARY EROSION CONTROL DETAIL SHEETS FOR ADDITIONAL DETAILS.

LEGEND

- SILT FENCE
- LIMITS OF SOIL DISTURBANCE
- CHECK DAM
- EROSION MATTING
- STONE DROP INLET PROTECTION

SOIL CLASSIFICATION

CABOT SILT LOAM
0-3% SLOPES
HYDROGROUP D
"K FACTOR" 0.32
MODERATE ERODIABILITY

SOIL CLASSIFICATION

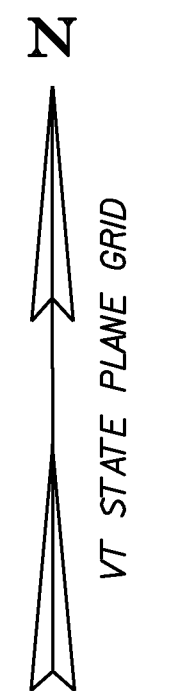
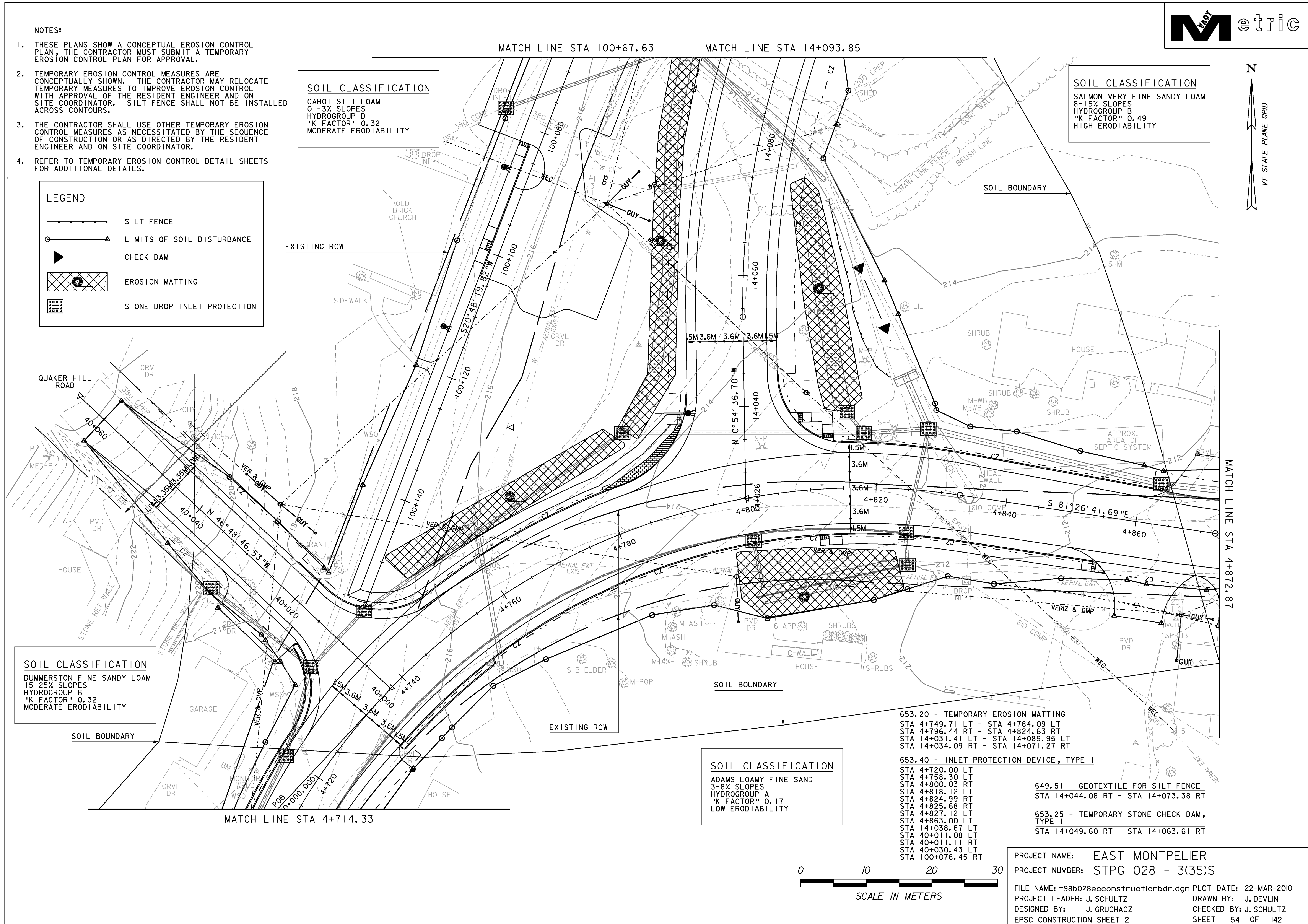
SALMON VERY FINE SANDY LOAM
8-15% SLOPES
HYDROGROUP B
"K FACTOR" 0.49
HIGH ERODIABILITY

SOIL CLASSIFICATION

DUMMERSTON FINE SANDY LOAM
15-25% SLOPES
HYDROGROUP B
"K FACTOR" 0.32
MODERATE ERODIABILITY

SOIL CLASSIFICATION

ADAMS LOAMY FINE SAND
3-8% SLOPES
HYDROGROUP A
"K FACTOR" 0.17
LOW ERODIABILITY



653.20 - TEMPORARY EROSION MATTING

- STA 4+749.71 LT - STA 4+784.09 LT
- STA 4+796.44 RT - STA 4+824.63 RT
- STA 14+031.41 LT - STA 14+089.95 LT
- STA 14+034.09 RT - STA 14+071.27 RT

653.40 - INLET PROTECTION DEVICE, TYPE I

- STA 4+720.00 LT
- STA 4+758.30 LT
- STA 4+800.03 RT
- STA 4+818.12 LT
- STA 4+824.99 RT
- STA 4+825.68 RT
- STA 4+827.12 LT
- STA 4+863.00 LT
- STA 14+038.87 LT
- STA 40+011.08 LT
- STA 40+011.11 RT
- STA 40+030.43 LT
- STA 100+078.45 RT

649.51 - GEOTEXTILE FOR SILT FENCE

- STA 14+044.08 RT - STA 14+073.38 RT

653.25 - TEMPORARY STONE CHECK DAM, TYPE I

- STA 14+049.60 RT - STA 14+063.61 RT

PROJECT NAME: EAST MONTPELIER
PROJECT NUMBER: STPG 028 - 3(35)S

FILE NAME: +98b028econstructonbdr.dgn PLOT DATE: 22-MAR-2010
PROJECT LEADER: J. SCHULTZ DRAWN BY: J. DEVLIN
DESIGNED BY: J. GRUCHACZ CHECKED BY: J. SCHULTZ
EPSC CONSTRUCTION SHEET 2 SHEET 54 OF 142