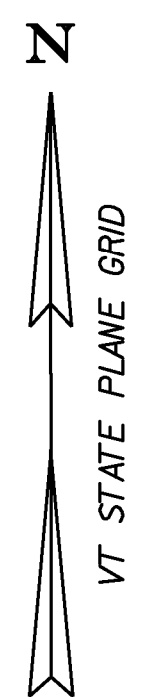


2' Ø CMP (SEE ISD EMAIL OF 6-6-II)

MATCH LINE STA 100+67.63

MATCH LINE STA 14+093.85



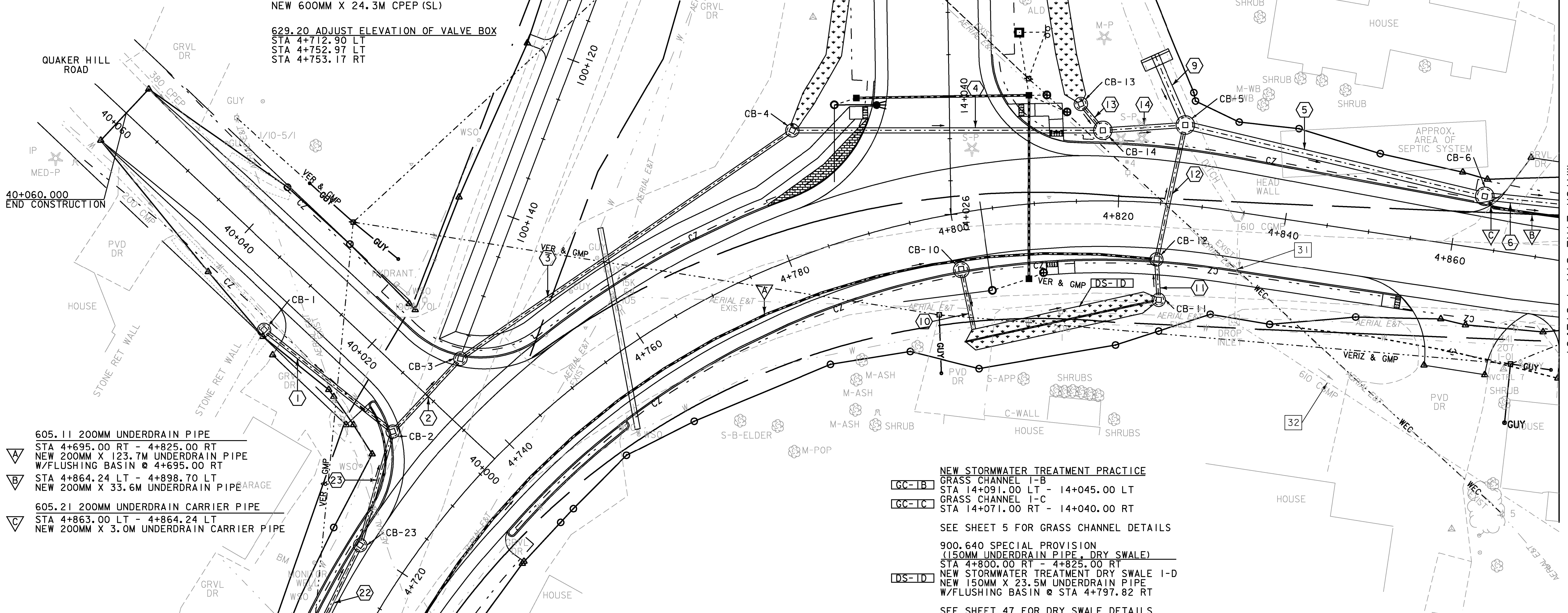
- NEW DRAINAGE**
- ① STA 40+030.43 LT - 40+011.08 LT
NEW 450MM X 19.5M RCP/CPEP (SL)
W/1200MM PRCCB @ STA 40+030.43 LT
W/GRATE TYPE D (I)
 - ② STA 40+011.08 LT - 40+011.11 RT
NEW 450MM X 11.8M RCP/CPEP (SL)
W/1200MM PRCCB @ STA 40+011.08 LT
W/GRATE TYPE D (I)
 - ③ STA 40+011.11 RT - 4+785.30 LT
NEW 450MM X 47.9M RCP/CPEP (SL)
W/1200MM PRCCB @ STA 40+011.11 RT
W/GRATE TYPE D (I)
 - ④ STA 4+785.30 LT - 4+818.12 LT
NEW 600MM X 36.9M RCP/CPEP (SL)
W/1200MM PRCCB @ STA 4+785.30 LT
W/GRATE TYPE D (I)
 - ⑤ STA 4+827.12 LT - 4+863.00 LT
NEW 900MM X 36.6M RCP/CPEP (SL)
W/1800MM PRCCB @ STA 4+827.12 LT
W/GRATE TYPE D (I)
 - ⑥ STA 4+863.00 LT - 4+900.02 LT
NEW 900MM X 35.8M RCP/CPEP (SL)
W/1800MM PRCCB @ STA 4+863.00 LT
W/GRATE TYPE D (I)
 - ⑨ STA 14+044.60 RT - 4+827.12 LT
NEW 900MM X 9.1M CPEP
W/REINFORCED CONCRETE HEADWALL
AT INLET
 - ⑩ STA 4+800.03 RT - 4+800.03 RT
NEW 450MM X 7.2M RCP/CPEP (SL)
W/1500MM PRCCB @ STA 4+800.03 RT
W/GRATE TYPE D (I)
 - ⑪ STA 4+825.68 RT - 4+824.99 RT
NEW 450MM X 4.8M RCP/CPEP (SL)
W/1200MM PRCCB @ STA 4+825.68 RT
W/GRATE TYPE D (I)

- ⑫ STA 4+824.99 RT - 4+827.12 LT
NEW 450MM X 16.3M RCP/CPEP (SL)
W/1200MM PRCCB @ STA 4+824.99 RT
W/GRATE TYPE D (I)
- ⑬ STA 14+038.87 RT - 4+818.12 LT
NEW 450MM X 4.1M RCP/CPEP (SL)
W/1200MM PRCCB @ STA 14+038.87 LT
W/GRATE TYPE D (I)
- ⑭ STA 4+818.12 LT - 4+827.12 LT
NEW 600MM X 9.9M RCP/CPEP (SL)
W/1800MM PRCCB @ STA 4+818.12 LT
W/GRATE TYPE D (I)
- ⑮ STA 14+091.93 LT - 14+076.43 RT
NEW 600MM X 29.3M RCP/CPEP (SL)
W/1800MM PRCCB @ STA 14+091.93 LT
W/GRATE TYPE D (I)
- ⑰ STA 100+078.45 RT - 14+091.93 LT
NEW 450MM X 29.8M RCP/CPEP (SL)
W/1200MM PRCCB @ STA 100+078.45 RT
W/GRATE TYPE D (I)
- ⑲ STA 4+693.66 LT - 4+720.00 LT
NEW 450MM X 26.9M RCP/CPEP (SL)
W/1200MM PRCCB @ STA 4+693.66 LT
W/GRATE TYPE D (I)
- ⑳ STA 4+720.00 LT - 40+011.08 LT
NEW 450MM X 14.1M RCP/CPEP (SL)
W/1200MM PRCCB @ STA 4+720.00 LT
W/GRATE TYPE D (I)

- EXISTING DRAINAGE**
- ⑩ STA 4+834.49 RT - 4+835.79 RT
EXISTING 610MM X 11.5M CGMP &
HEADWALL = REMOVE HEADWALL & EXISTING PIPE
 - ⑫ STA 4+835.79 RT - 4+895.89 RT
EXISTING 610MM X 75.5M CGMP & DI =
REMOVE DI AND BACKFILL EXISTING PIPE INLET
 - ⑬ STA 100+089.64 RT - 100+078.43 RT
EXISTING 380MM X 15.2M CGMP & DI = RETAIN
 - ⑭ STA 100+078.19 RT - 100+079.03 LT
EXISTING 380MM X 15.3M CGMP & DI =
REMOVE DI AND REMOVE EXISTING PIPE

625.10 SLEEVES FOR UTILITIES (1 X 600MM)
STA. 4+753.29 RT - 4+762.81 LT
NEW 600MM X 24.3M CPEP (SL)

629.20 ADJUST ELEVATION OF VALVE BOX
STA 4+712.90 LT
STA 4+752.97 LT
STA 4+753.17 RT



- A 605.11 200MM UNDERDRAIN PIPE
STA 4+695.00 RT - 4+825.00 RT
NEW 200MM X 123.7M UNDERDRAIN PIPE
W/FLUSHING BASIN @ 4+695.00 RT
- B STA 4+864.24 LT - 4+898.70 LT
NEW 200MM X 33.6M UNDERDRAIN PIPE
- C 605.21 200MM UNDERDRAIN CARRIER PIPE
STA 4+863.00 LT - 4+864.24 LT
NEW 200MM X 3.0M UNDERDRAIN CARRIER PIPE

- NEW STORMWATER TREATMENT PRACTICE**
- GC-1B GRASS CHANNEL I-B
STA 14+091.00 LT - 14+045.00 LT
 - GC-1C GRASS CHANNEL I-C
STA 14+071.00 RT - 14+040.00 RT
- SEE SHEET 5 FOR GRASS CHANNEL DETAILS
- DS-1D 900.640 SPECIAL PROVISION
(150MM UNDERDRAIN PIPE, DRY SWALE)
STA 4+800.00 RT - 4+825.00 RT
NEW STORMWATER TREATMENT DRY SWALE I-D
NEW 150MM X 23.5M UNDERDRAIN PIPE
W/FLUSHING BASIN @ STA 4+797.82 RT
- SEE SHEET 47 FOR DRY SWALE DETAILS

MATCH LINE STA 4+714.33

MATCH LINE STA 4+872.87



PROJECT NAME:	EAST MONTEPELIER	FILE NAME:	+98b028bdr.dgn	PLOT DATE:	29-MAR-2010
PROJECT NUMBER:	STPG 028-3(35)S	PROJECT LEADER:	J. SCHULTZ	DRAWN BY:	D. LYMAN
		DESIGNED BY:	J. GRUCHACZ	CHECKED BY:	J. DEVLIN
		DRAINAGE LAYOUT SHEET 2		SHEET	39 OF 142