

FOR EROSION CONTROL
DETAIL SEE R O W
SHEET 13-19 OF 37

FOR DRAINAGE
DETAIL SEE R O W
SHEET 25-28 OF 37

FOR LANDSCAPE
DETAIL SEE R O W
SHEET 20-24 OF 37

210.10 COLD PLANING BITUMINOUS PAVEMENT
STA 14+240.50 - 14+255.00

203.28 EXCAVATION OF SURFACES AND PAVEMENTS
STA 14+093.41 LT - 14+136.70 LT
STA 14+143.52 LT - 14+177.43 LT
STA 100+019.55 RT - 30+032.38 LT

401.10 AGGREGATE SURFACE COURSE
STA 14+201.00 LT (4.8M - GRAVEL DRIVE)
STA 30+053.00 RT (7.0M - GRAVEL DRIVE)
STA 30+060.00 - 30+070.00 (KELTON ROAD)

900.675 SPECIAL PROVISION
(HAND PLACED BITUMINOUS CONCRETE MATERIAL, DRIVES)
STA 14+137.00 RT (10.5M - PAVED)
STA 14+217.00 RT (9.1M - PAVED)

LINE SHOWN ON THIS PLAN AS EXISTING
PROPERTY LINES P/L ARE BELIEVED TO
BE ACCURATE BUT SHOULD NOT BE RELIED
UPON FOR PURPOSES UNRELATED TO THE
STATE OF VERMONT'S ACQUISITION OF LAND
AND RIGHTS FOR THIS PROJECT.

END RELINQUISHMENT
AREA NO. 1
STA. 14+145.86
13.63M LT. (34.7')

END MAINTENANCE
AGREEMENT ZONE NO. 2
KELTON ROAD TH #39
STA. 30+015.84 CL
LENGTH 8.3M (27.2')

WASHINGTON ELECTRIC
CO-OP, INC.

NEW PARKING CURVE
 $\Delta = 35^\circ 11' 36.5''$ LT
R = 70.000
T = 22.225
L = 43.041
E = 3.444
BANK = 0.0025

GLORIA A. BIRON-TRUSTEE
-LESSOR
OLD BRICK CHURCH-LESSEE

KELTON CURVE
 $\Delta = 6^\circ 38' 25.9''$ RT
R = 20.000
T = 1.932
L = 2.517
E = 3.289
BANK = NC

VT 14 CURVE #2
 $\Delta = 7^\circ 31' 53.0''$ LT
R = 125.000
T = 8.227
L = 16.431
E = 0.270
BANK = 0.0435

O'VITT, DAVID P.

TOWN OF
EAST MONTPELIER

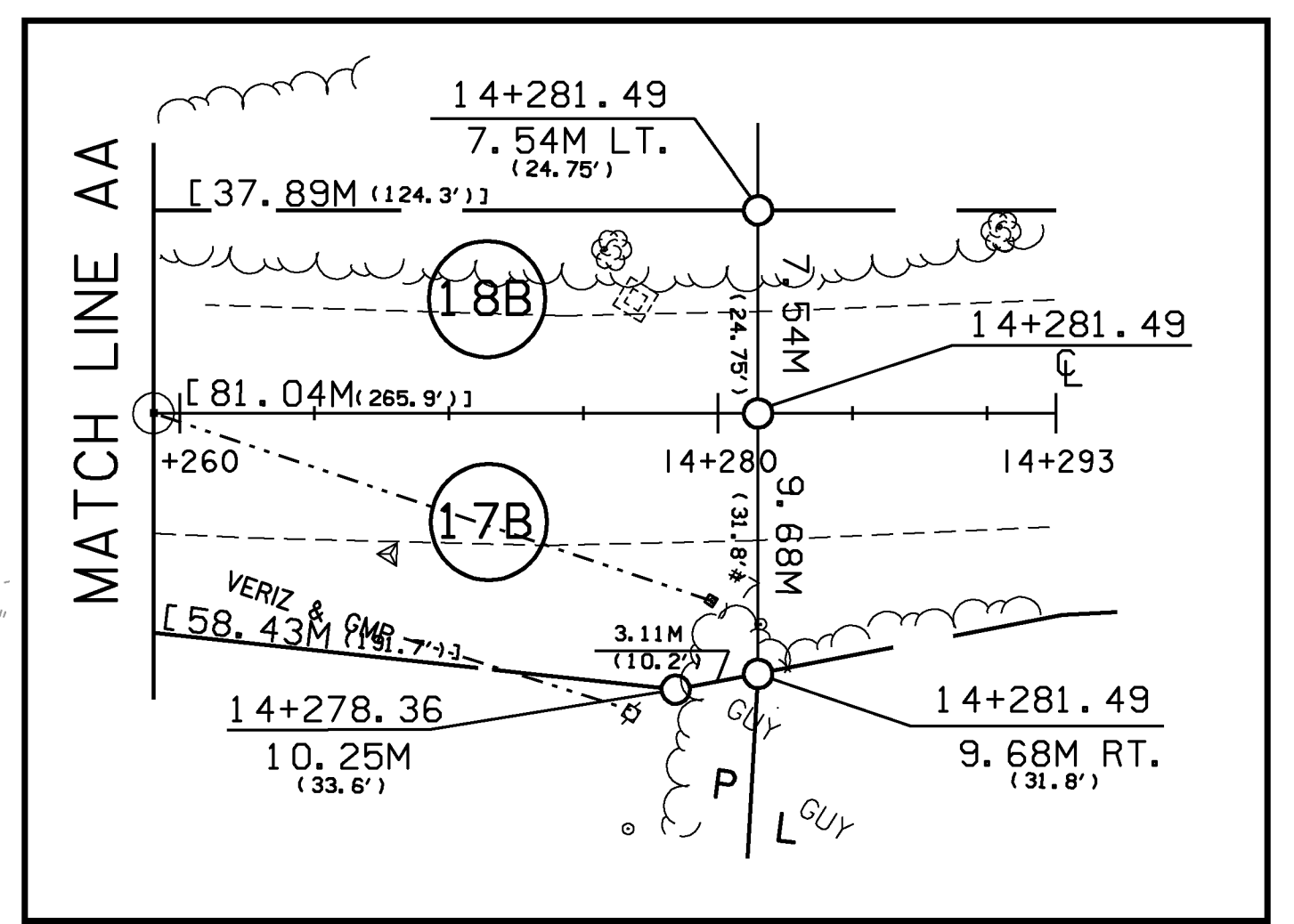
TOWN OF
EAST MONTPELIER
(town clerks
office)

WASHINGTON ELECTRIC
CO-OP, INC.

LAPERLE, NORMAN A. & CLAIRE

BEGIN MAINTENANCE
AGREEMENT ZONE NO. 2
KELTON ROAD TH #39
STA. 30+007.51 CL

VT 14 CURVE #1
 $\Delta = 66^\circ 25' 19.5''$ RT
R = 125.000
T = 11.832
L = 14.911
E = 1.104
BANK = 0.0435



MATCH LINE TO ROW SHEET 35 OF 37

PROJECT NAME: EAST MONTPELIER
PROJECT NUMBER: STPG 028-3(35)S

FILE NAME: r98b02814.dgn
PROJECT LEADER: J. SCHULTZ
DESIGNED BY: J. GRUCHACZ
R.O.W. LAYOUT SHEET 37 OF 37

PLOT DATE: 22-MAR-2010
DRAWN BY: R.O.W.
CHECKED BY: R.O.W.
SHEET 24 OF 142