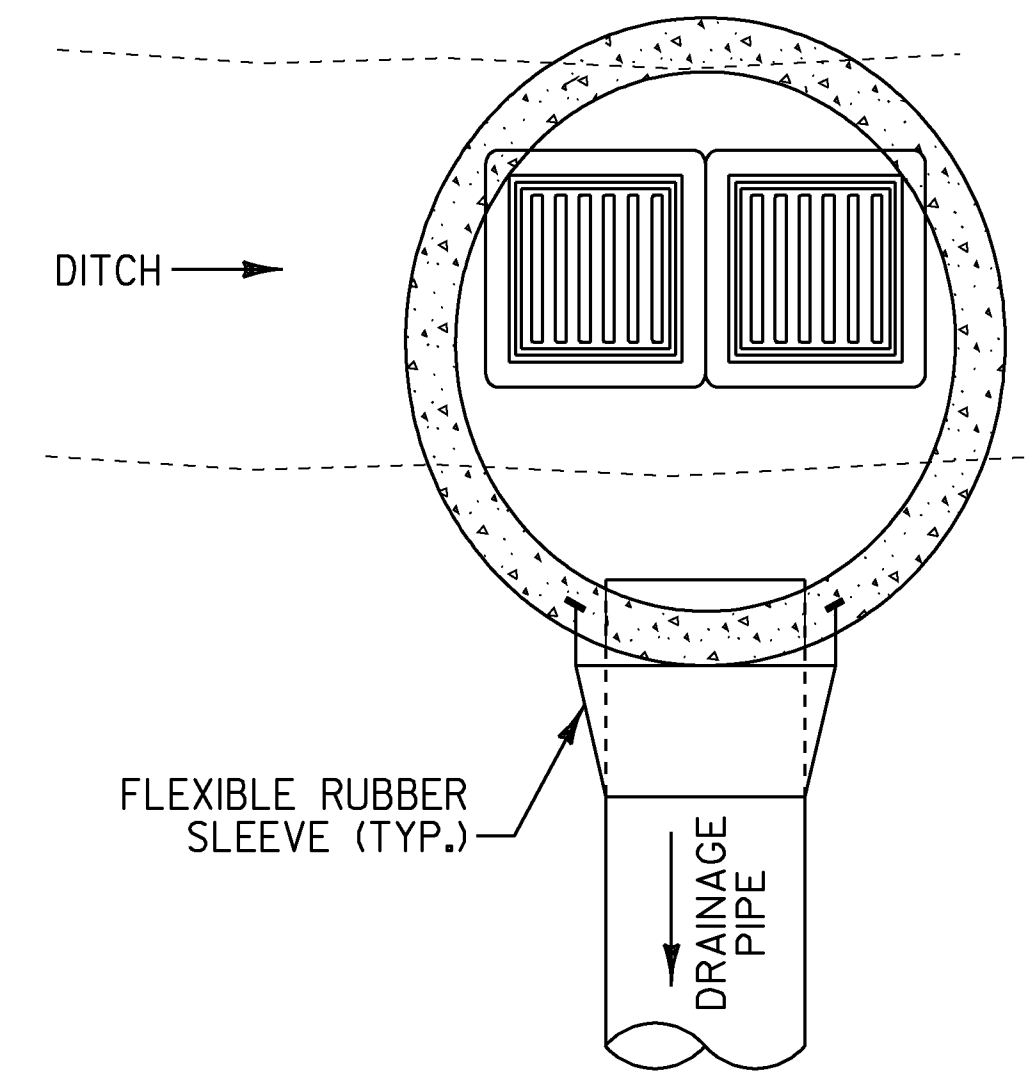
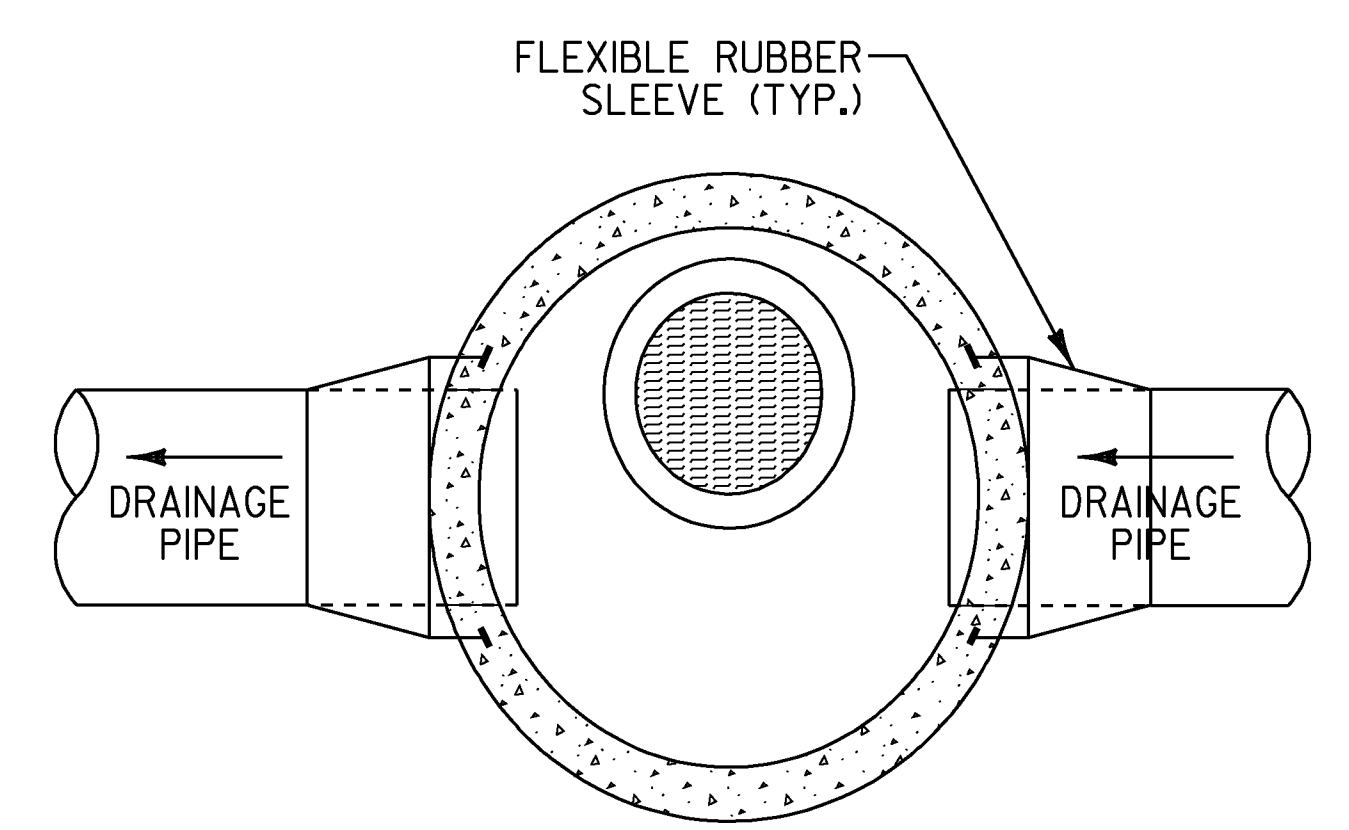


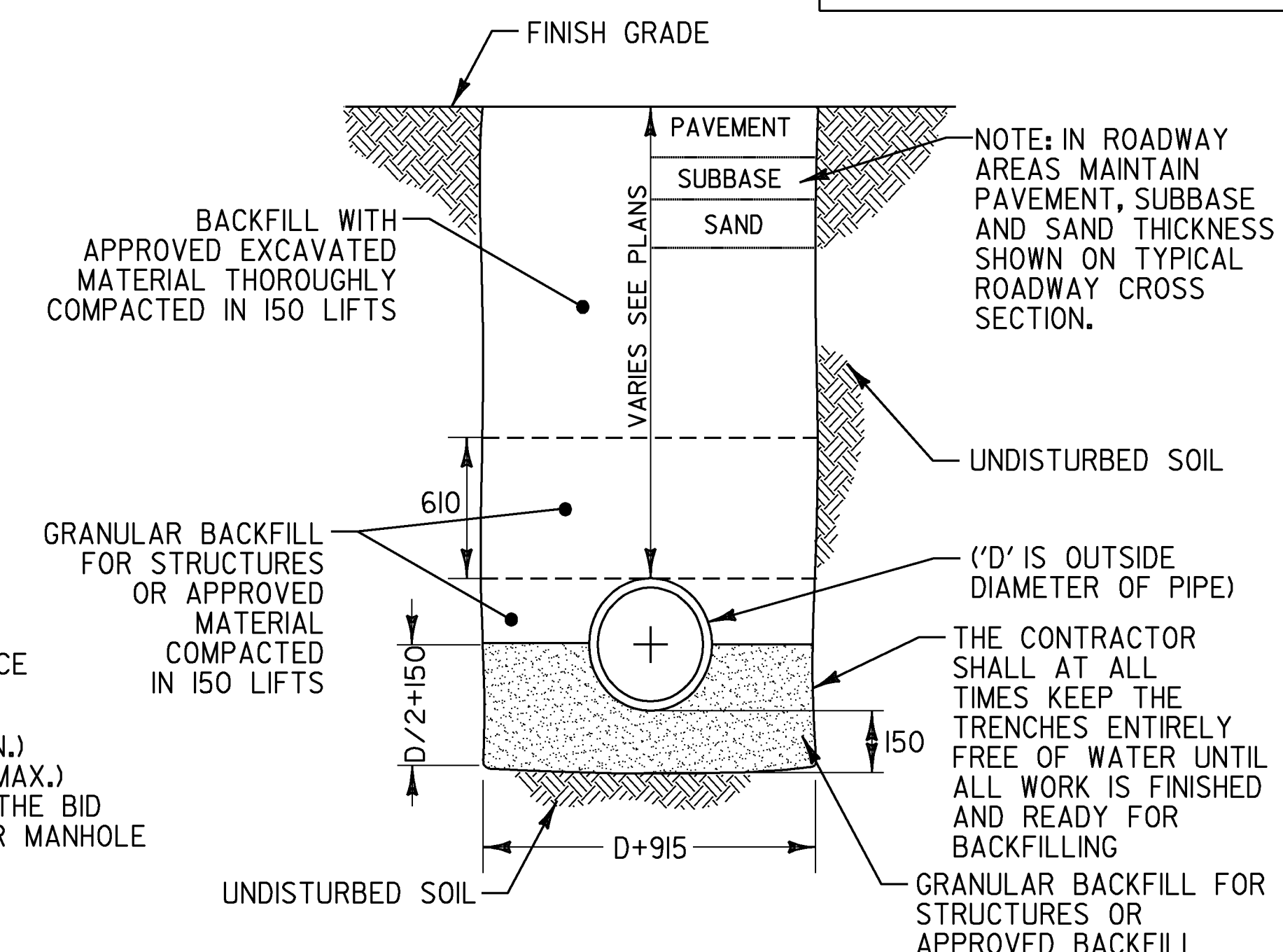
**CATCH BASIN (PLAN)
WITH UNDERDRAIN**
NOT TO SCALE



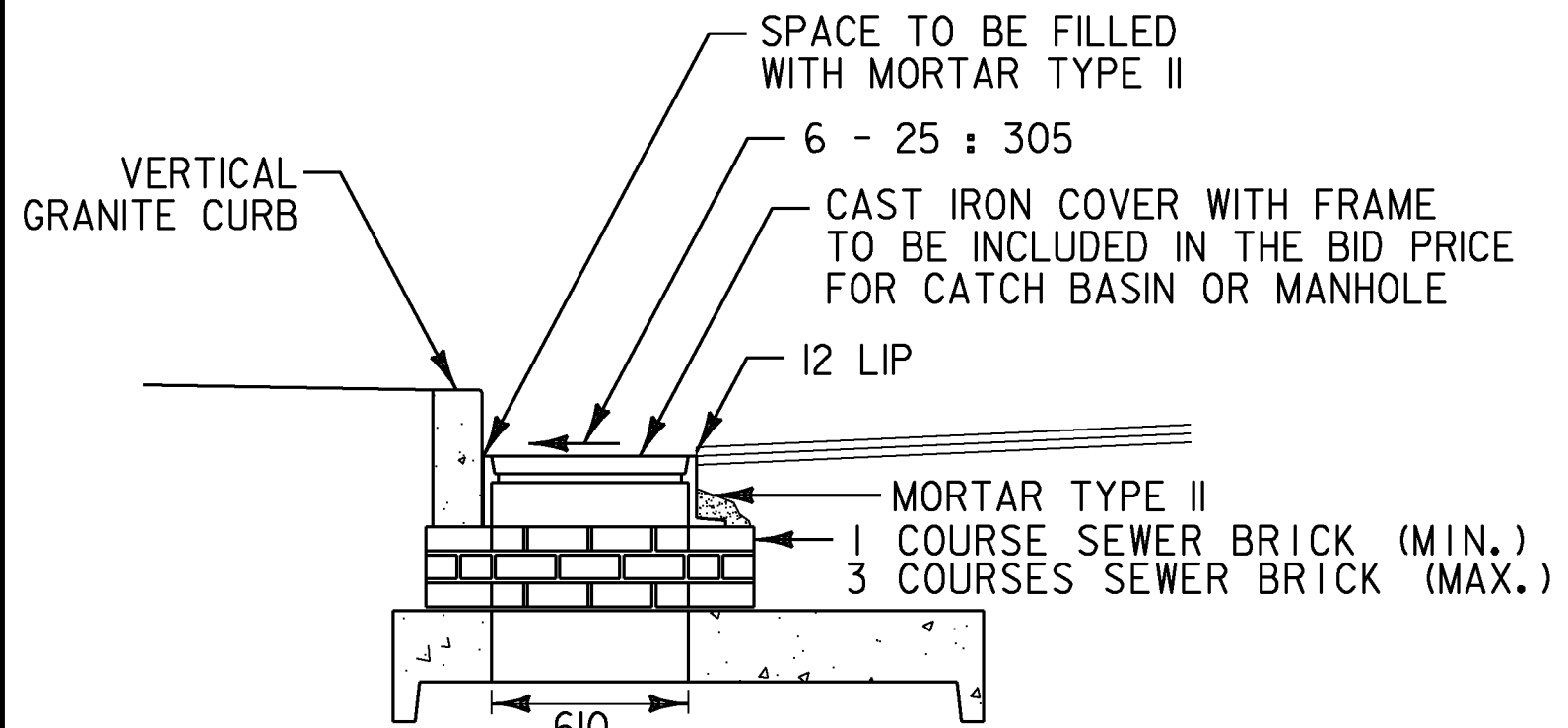
DOUBLE GRATE CATCH BASIN (PLAN)
NOT TO SCALE



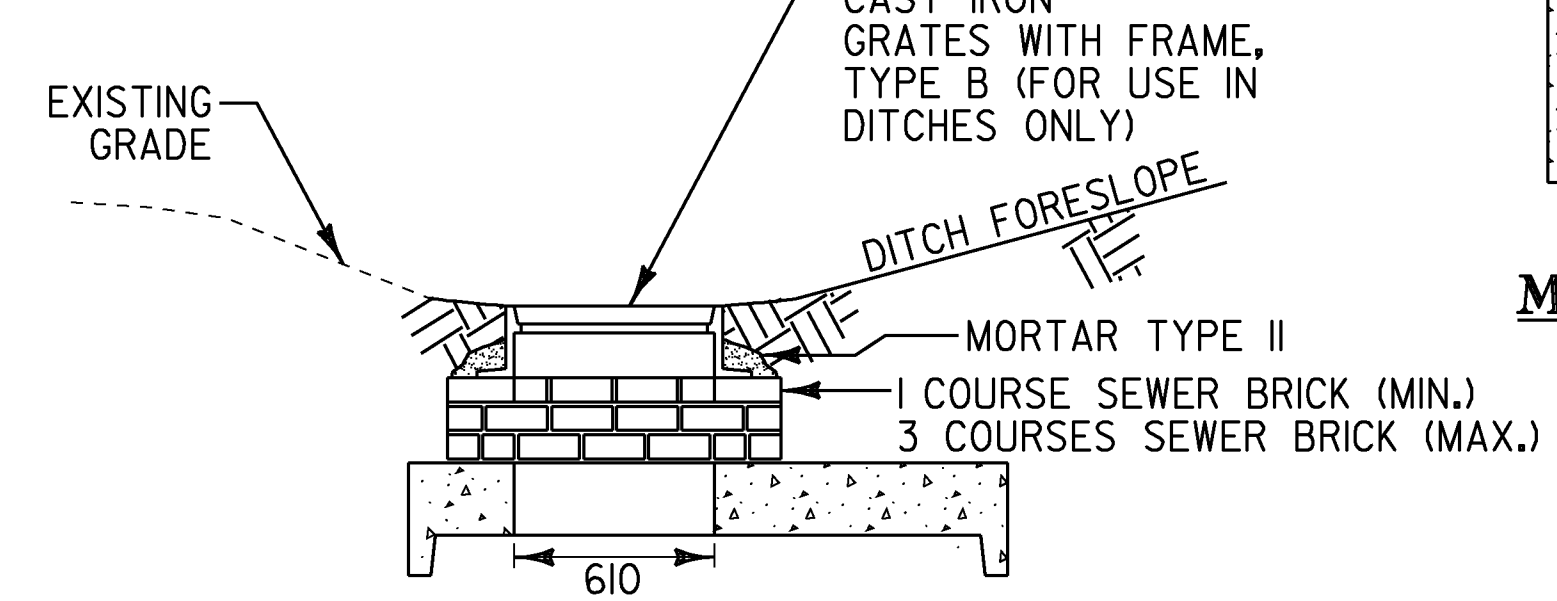
MANHOLE (PLAN)
NOT TO SCALE



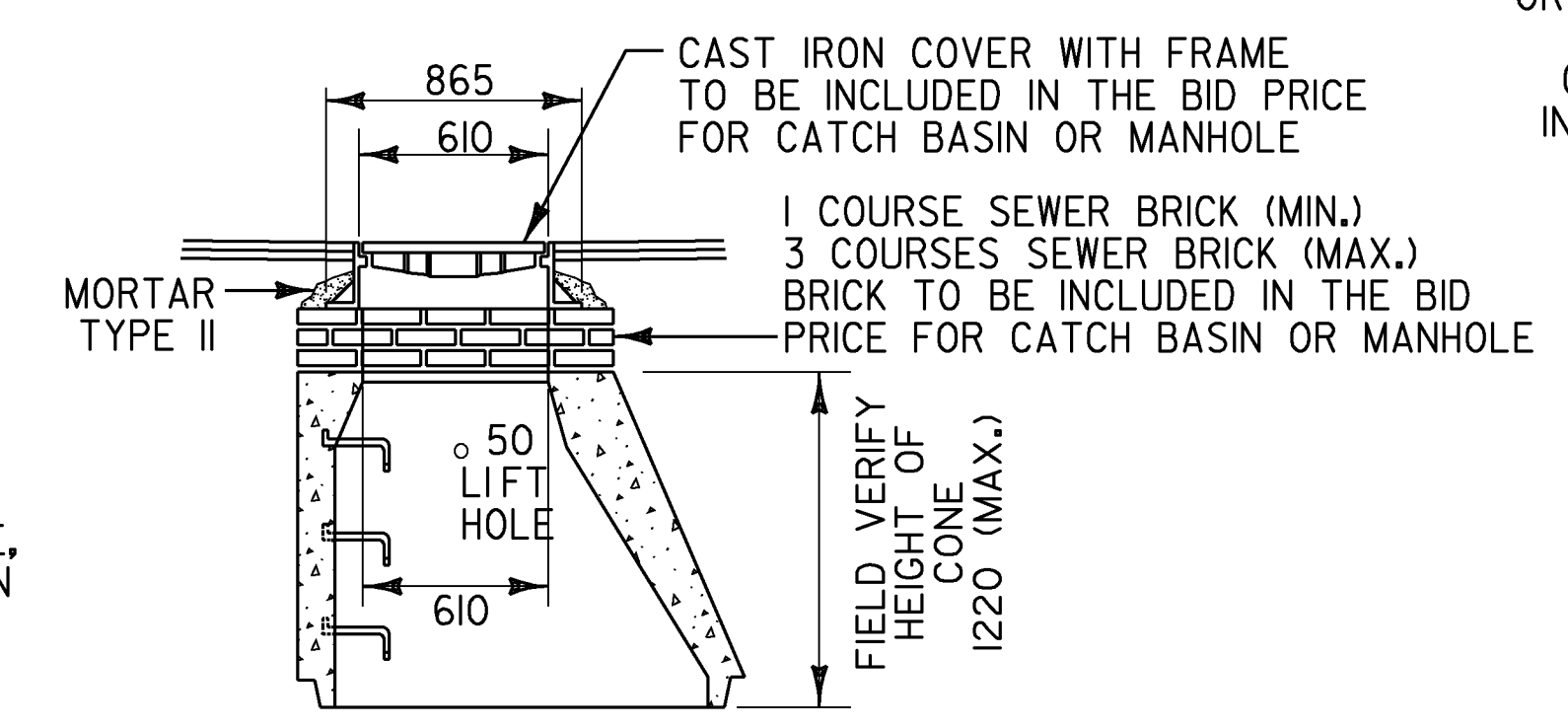
**TYPICAL STORM DRAIN
AND PIPE SLEEVE TRENCH**
NOT TO SCALE



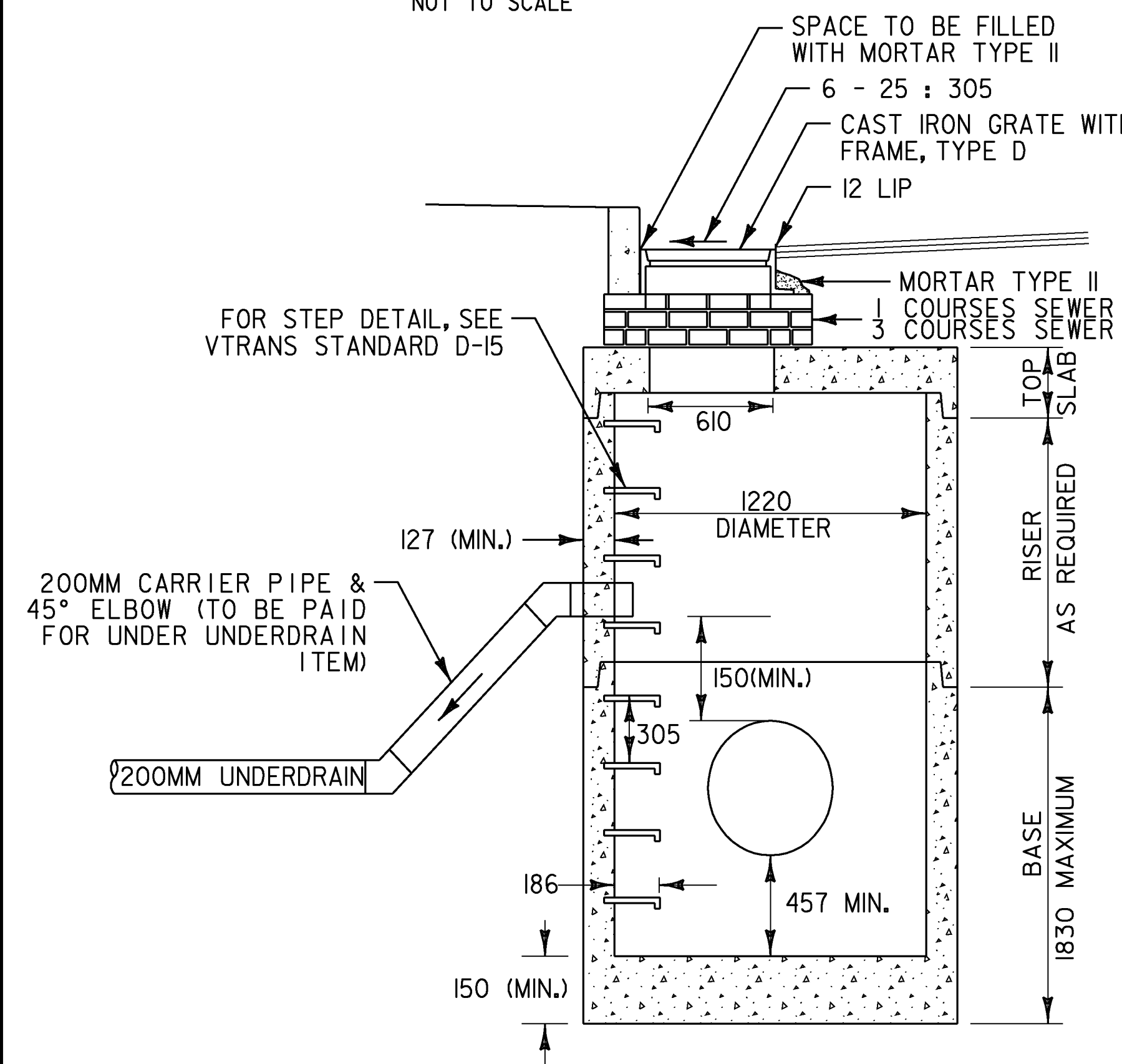
**TYPICAL GRATE INSTALLATION WITH
VERTICAL GRANITE CURB (ELEVATION)**
NOT TO SCALE



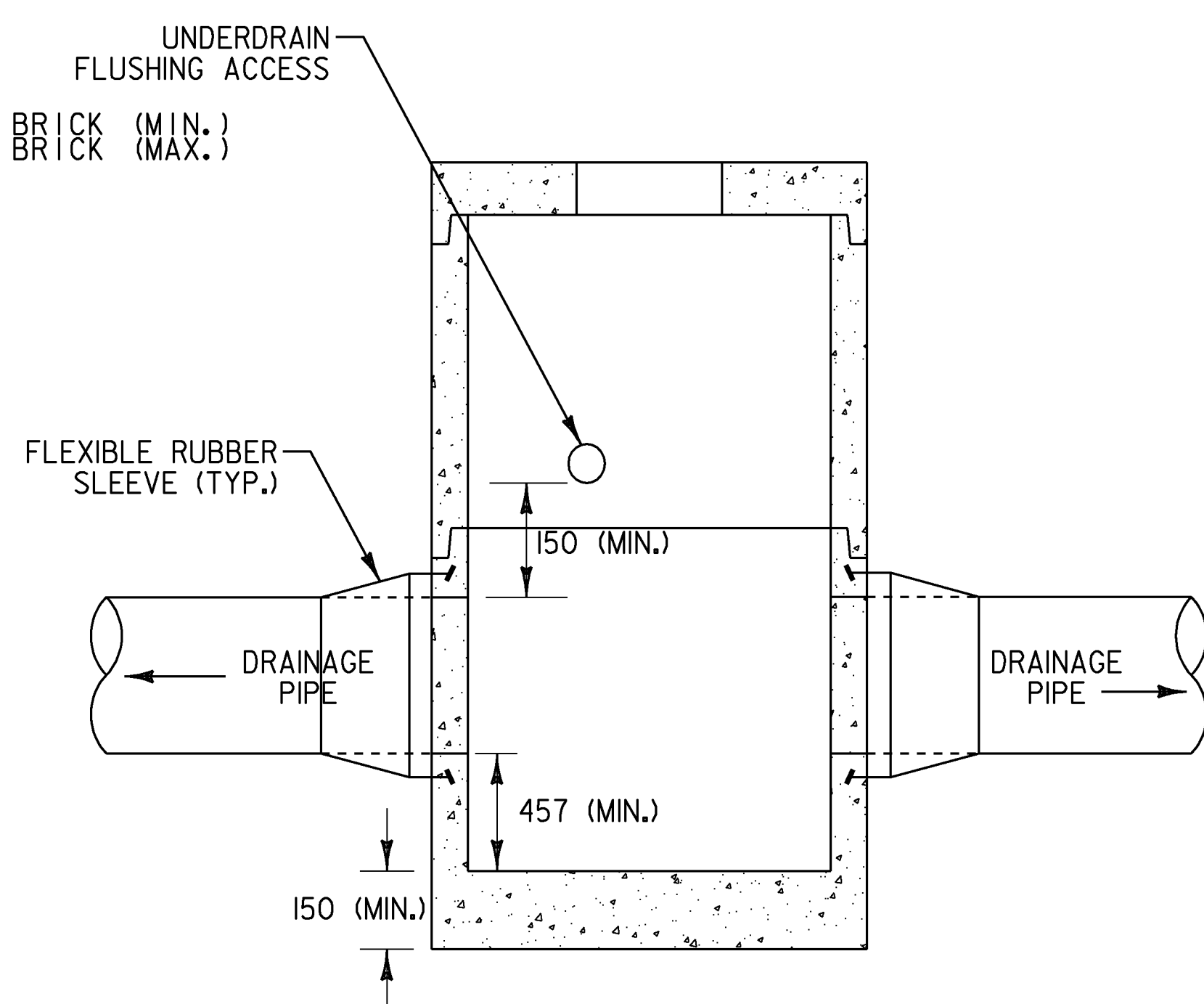
**TYPICAL GRATE INSTALLATION
IN DITCH (ELEVATION)**
NOT TO SCALE



MANHOLE CONE SECTION
NOT TO SCALE



ELEVATION VIEW



SIDE VIEW

**TYPICAL PRECAST CATCH BASIN OR MANHOLE
WITH UNDERDRAIN FLUSHING ACCESS**
NOT TO SCALE

PRECAST REINFORCED CONCRETE CATCH BASIN NOTES:

1. PRECAST CONCRETE SECTIONS SHALL CONFORM TO SECTION 705.04 OF THE STANDARD SPECIFICATIONS.
2. MINIMUM CONCRETE COMPRESSIVE STRENGTH: 4,000 PSI AT 28-DAYS
3. STEEL REINFORCING SHALL CONFORM TO SECTION 713.01 OF THE STANDARD SPECIFICATIONS.
4. MANHOLE STEPS SHALL BE 356 WIDE STEEL REINFORCED COPOLYMER POLYPROPYLENE PLASTIC CONFORMING TO SECTION 705.04 OF THE STANDARD SPECIFICATIONS AND SHALL BE CAST INTO MANHOLE SECTIONS BY THE PRECAST CONCRETE MANUFACTURER.
5. FACE OF PIPE SHALL NOT PROJECT MORE THAN 50 OR LESS THAN 25 FROM INSIDE WALL OF STRUCTURE.
6. ALL STRUCTURES WITH MULTIPLE PIPES SHALL HAVE A MINIMUM OF 305 OF OUTSIDE SURFACE BETWEEN HOLES, NO MORE THAN 75% OF A HORIZONTAL CROSS-SECTION SHALL BE HOLES, AND THERE SHALL BE NO HOLES CLOSER THAN 75 TO JOINTS.
7. FITTING FRAME TO FINAL GRADE MAY BE DONE WITH BRICK OR PRECAST CONCRETE GRADE RINGS OF APPROPRIATE THICKNESS (3 COURSES MAX).
8. FLAT SLAB TOPS SHALL BE USED FOR ALL CATCH BASINS UNLESS OTHERWISE PERMITTED BY THE ENGINEER.
9. ALL PIPE INVERTS AND PENETRATION ANGLES SHALL BE FIELD VERIFIED PRIOR TO PRECASTING.
10. PRECAST SECTIONS SHALL HAVE A TONGUE AND GROOVE JOINT AND BE ASSEMBLED USING A BUTYL RUBBER OR APPROVED EQUAL SEALANT.
11. PROVIDE FLEXIBLE RUBBER SLEEVES CONFORMING TO ASTM C-923, RESILIENT, OF SIZE REQUIRED, FOR EACH PIPE CONNECTING TO STRUCTURE. SLEEVES SHALL BE CAST INTO PRECAST STRUCTURE BY THE MANUFACTURER FOR ALL PIPE PENETRATIONS.
12. PAYMENT FOR INSTALLATION OF THE CATCH BASINS SHALL BE MADE UNDER THE PRECAST REINFORCED CONCRETE CATCH BASIN WITH CAST IRON GRATE ITEM (604.20).

PROJECT NAME:	EAST MONTPELIER
PROJECT NUMBER:	STPG 028 - 3(35)S
FILE NAME:	+98b028+yp.dgn
PROJECT LEADER:	J. SCHULTZ
DESIGNED BY:	J. GRUCHACZ
DRAWN BY:	D. LYMAN
CHECKED BY:	J. DEVLIN
PLOT DATE:	22-MAR-2010
DRAINAGE STRUCTURE DETAIL SHEET	SHEET 6 OF 142