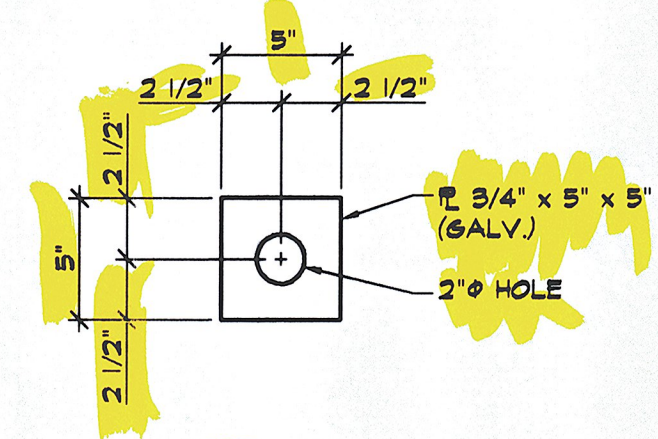
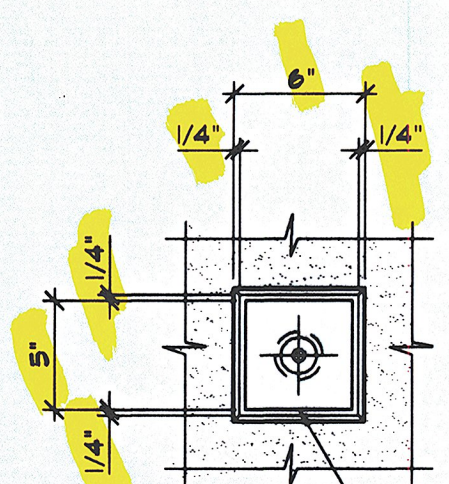


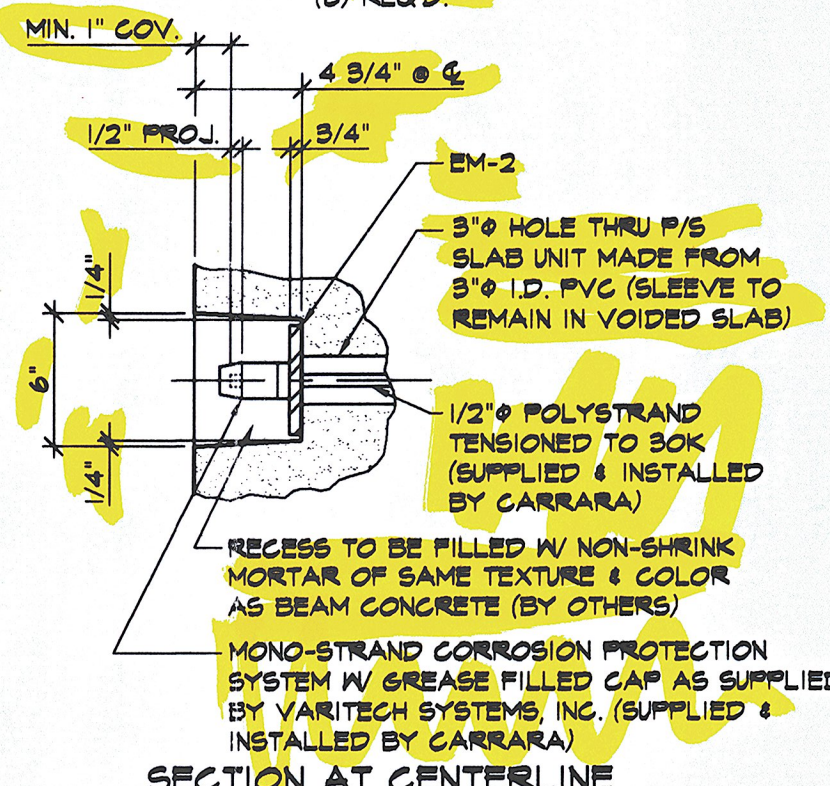
PLAN OF POCKET



EM-2
(b) REGRD.

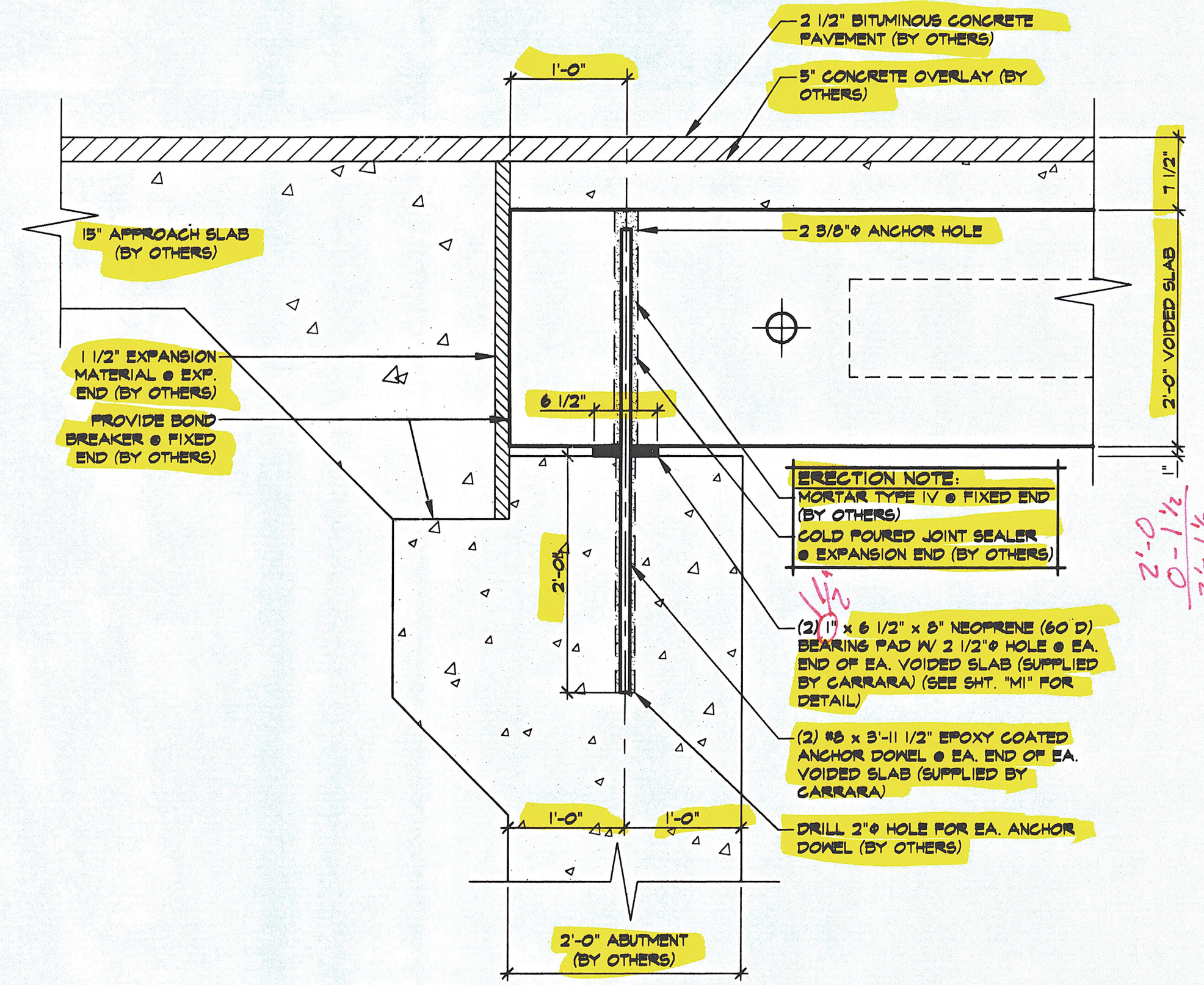


FASCIA ELEVATION



SECTION AT CENTERLINE

DETAIL - "A"
1/2" = 1'-0"



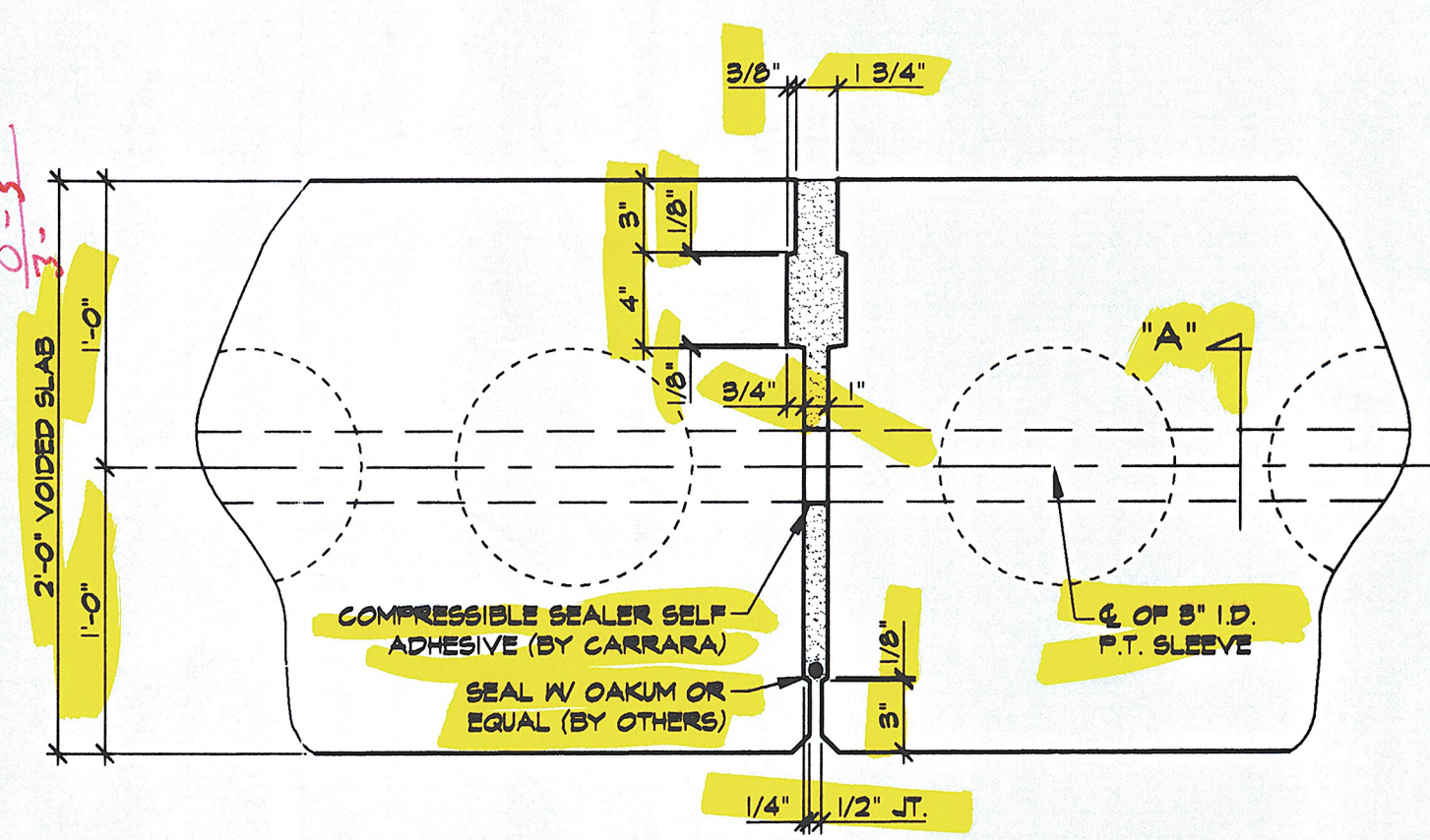
A SECTION AT BEARING
F2
1" = 1'-0"

ERECTION NOTE:
MORTAR TYPE IV @ FIXED END (BY OTHERS)
COLD POURED JOINT SEALER @ EXPANSION END (BY OTHERS)

(2) 1 1/2 x 6 1/2 x 8" NEOPRENE (60 D) BEARING PAD W/ 2 1/2" HOLE @ EA. END OF EA. VOIDED SLAB (SUPPLIED BY CARRARA) (SEE SHT. "M" FOR DETAIL)

(2) 16 x 3-1/2" EPOXY COATED ANCHOR DOVEL @ EA. END OF EA. VOIDED SLAB (SUPPLIED BY CARRARA)

DRILL 2" HOLE FOR EA. ANCHOR DOVEL (BY OTHERS)



B SHEAR KEY SECTION
F2
1/2" = 1'-0"

GROUT MATERIAL (TYP) (BY OTHERS)
COMPRESSIBLE SEALER SELF ADHESIVE TO BE PLACED PRIOR TO THE ERECTION OF THE BRIDGE BEAMS (BY CARRARA)
3" TENDON HOLE MADE FROM 3" ID. PVC (SLEEVE TO REMAIN IN BEAM) (TYP)

SECTION - "A"
1/2" = 1'-0"

RECEIVED
CND BY CWC OK'D BY _____
SEP 15 1997
RESUBMIT _____ APPROVED As Noted
BY GSZ DATE 9/23/97

NO.	DATE	REVISION

STATE OF VERMONT
AGENCY OF TRANSPORTATION

DRAWN: B.M. LOPEZ
DESIGNED: _____
CHECKED: _____
APPROVED: _____

J.P. CARRARA & SONS INC.
Precast & Prestress Manufacturer
RTE. 116, MIDDLEBURY, VERMONT 05753
Phone: (802) 388-8361 Fax: (802) 388-9010
Double-Tees Hollow-Core Plank Flat Panels

WINCO, INC.
P.O. BOX 334
SWANTON, VT 05488

Project Name:
**TOWN OF MONTGOMERY
BRIDGE #15
VT 118 OVER THE TROUT RIVER**
SUPPERSTRUCTURE DETAILS

SCALE: JOB #:
NOTED 23050-97
DATE: SHEET #:
9-5-97 F2