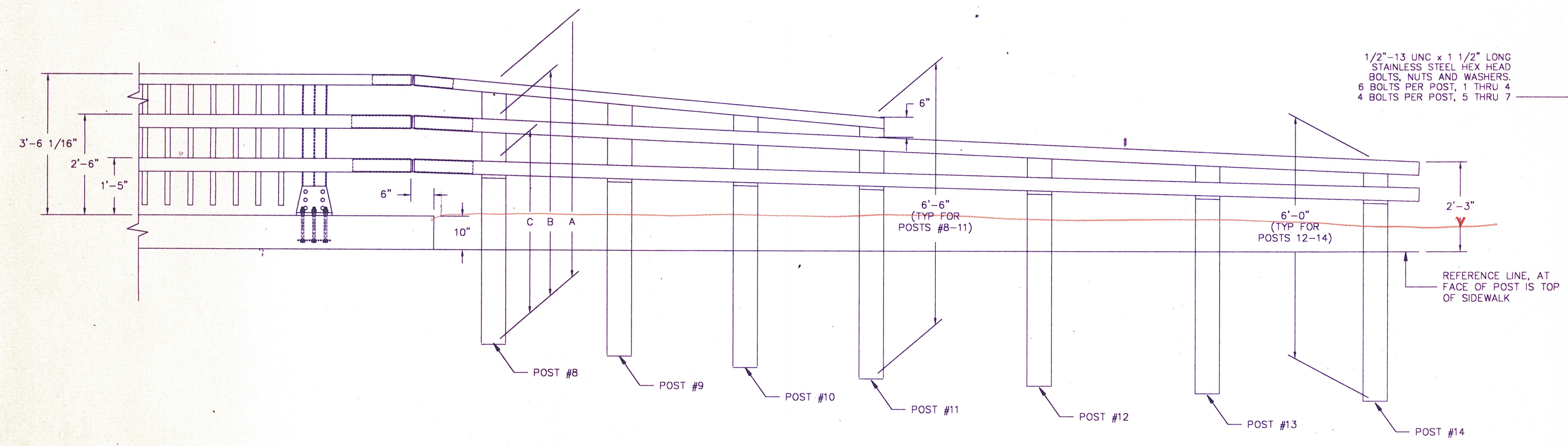
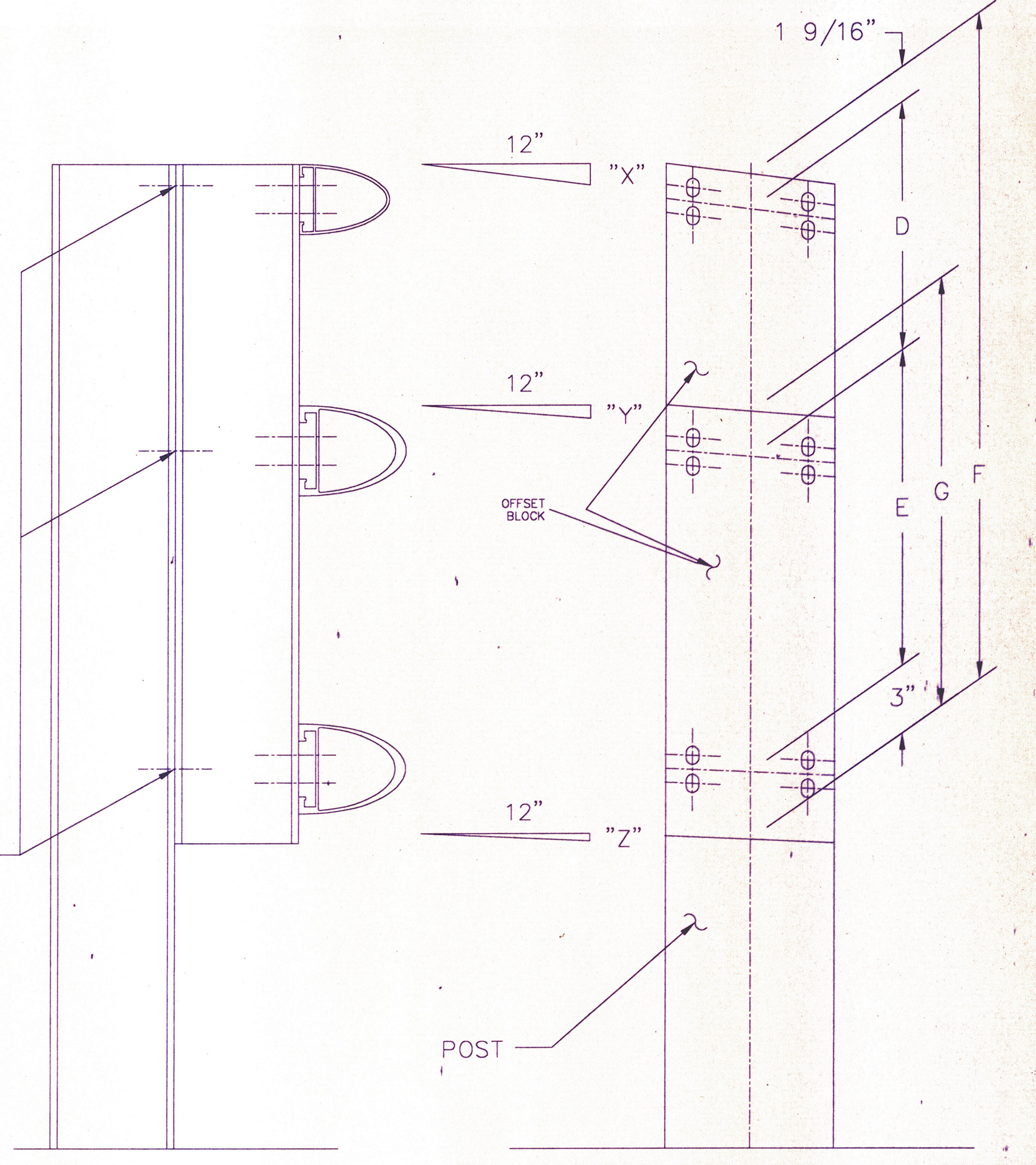


CURB ELEVATION



SIDEWALK ELEVATION



POST	1	2	3	4	5	6	7	8	9	10	11	12	13	14
A	6'-6"	6'-6"	6'-6"	6'-6"	-	-	-	6'-6"	6'-6"	6'-6"	6'-6"	-	-	-
B	5'-7 1/16"	5'-8 3/4"	5'-10 3/8"	6'-0"	6'-0"	6'-0"	6'-0"	5'-7 1/16"	5'-8 3/4"	5'-10 3/8"	6'-0"	6'-0"	6'-0"	6'-0"
C	4'-1 13/16"	4'-4 13/16"	4'-7 3/4"	4'-10 3/4"	5'-0 7/16"	5'-2 3/16"	5'-3 15/16"	4'-6 7/16"	4'-8 3/4"	4'-11 1/8"	5'-1 7/16"	5'-2 3/8"	5'-3 1/4"	5'-4 1/8"
D	11 7/16"	9 3/4"	8 1/8"	6 7/16"	-	-	-	11 7/16"	9 3/4"	8 1/8"	6 7/16"	-	-	-
E	1'-5 3/16"	1'-3 7/8"	1'-2 9/16"	1'-1 1/4"	11 9/16"	9 13/16"	8 1/16"	1'-0 9/16"	11 15/16"	11 3/16"	10 9/16"	9 5/8"	8 3/4"	7 7/8"
F	2'-9 3/16"	2'-6 3/16"	2'-3 1/4"	2'-0 1/4"	-	-	-	2'-4 9/16"	2'-2 1/4"	1'-11 7/8"	1'-9 9/16"	-	-	-
G	1'-10 3/16"	1'-8 7/8"	1'-7 9/16"	1'-6 1/4"	1'-4 9/16"	1'-2 7/8"	1'-1 1/16"	1'-5 9/16"	1'-4 7/8"	1'-4 1/4"	1'-3 9/16"	1'-2 5/8"	1'-1 3/4"	1'-0 7/8"

	SIDEWALK SIDE	CURB SIDE
"X"	1 1/16"	1 1/16"
"Y"	1/2"	1/2"
"Z"	5/16"	1/8"