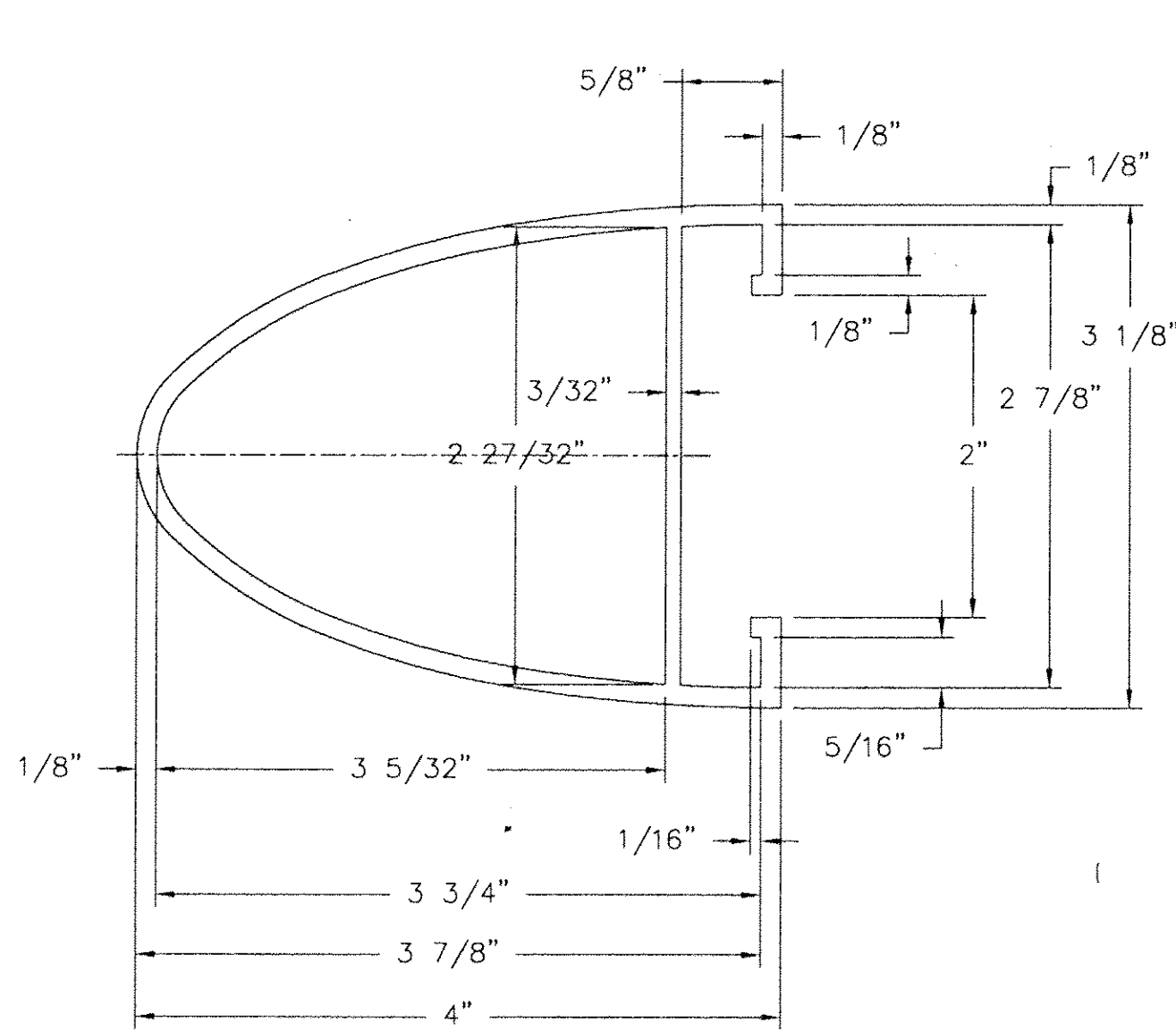
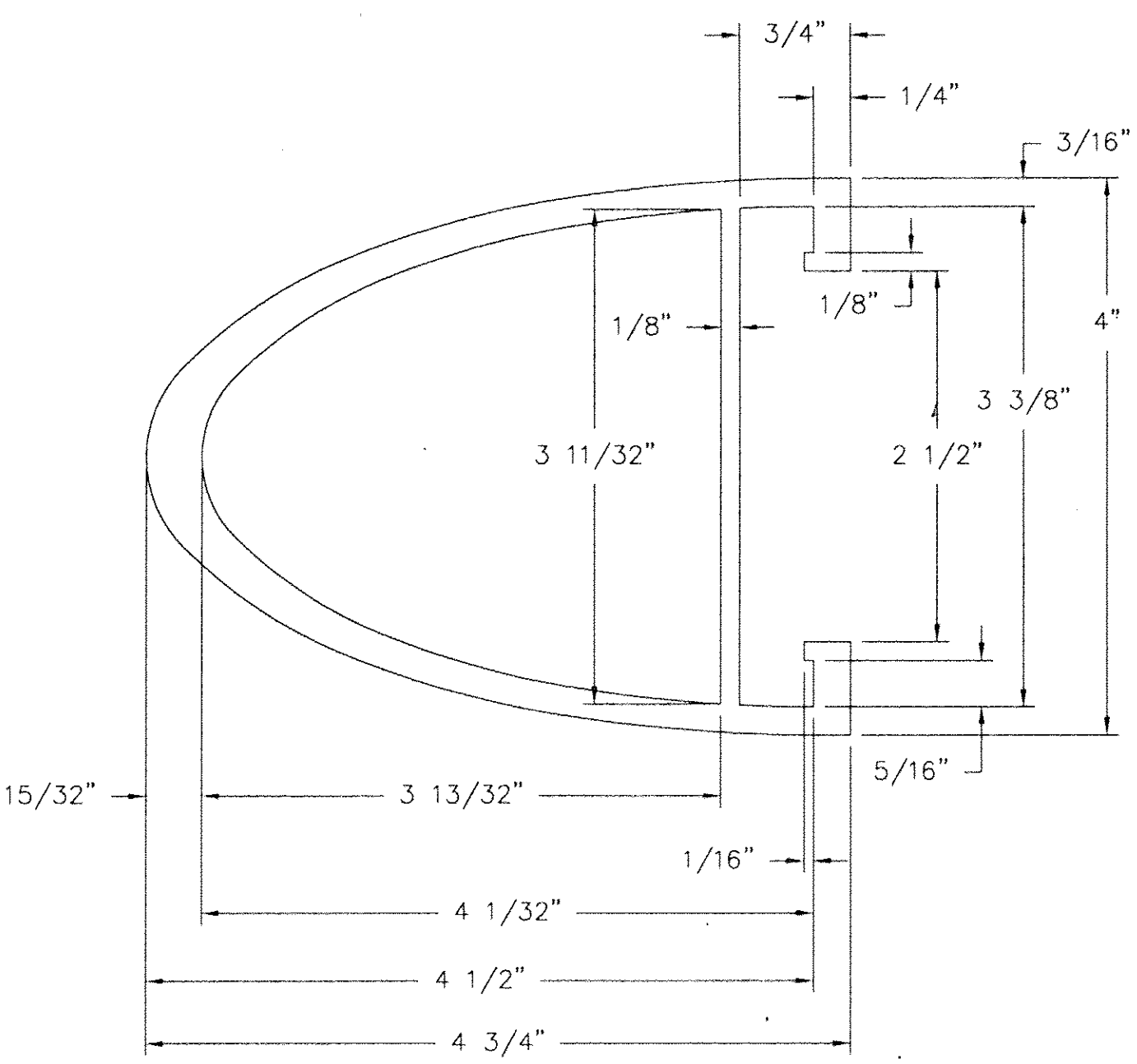


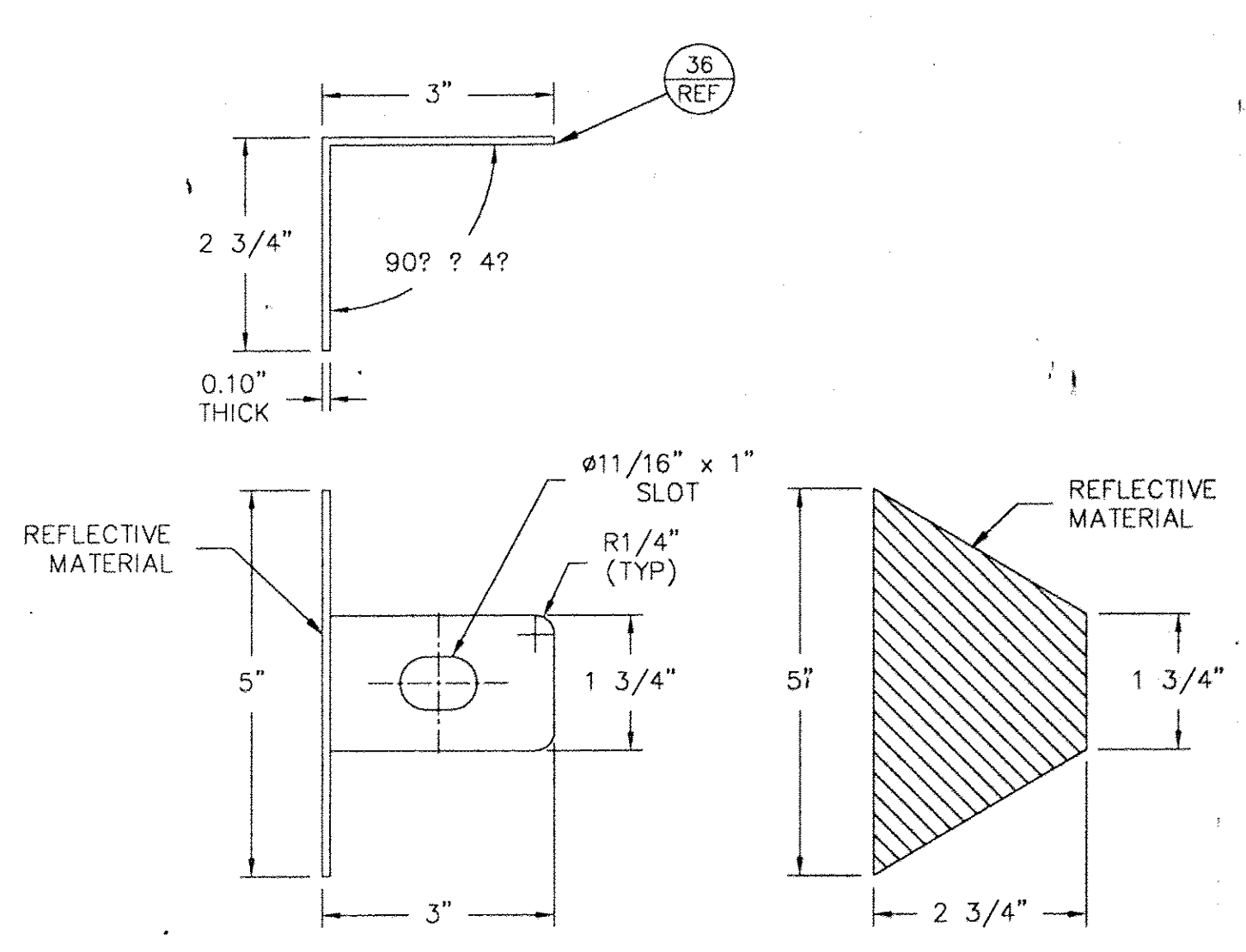
BRIDGE RAIL & SPLICE BAR - ASSEMBLY DETAIL



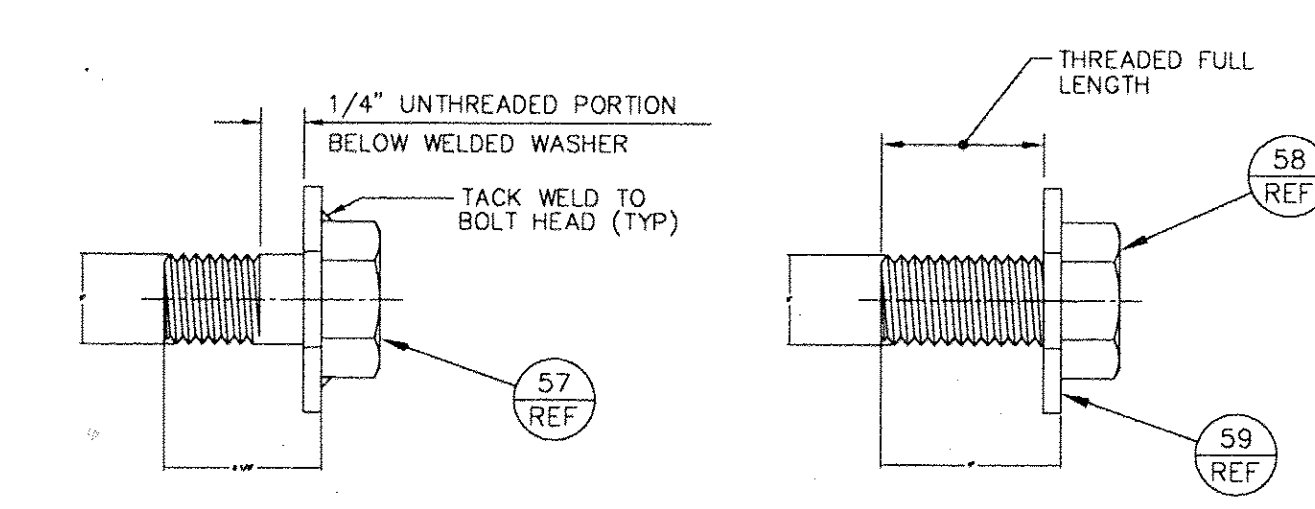
HAND RAIL SECTION



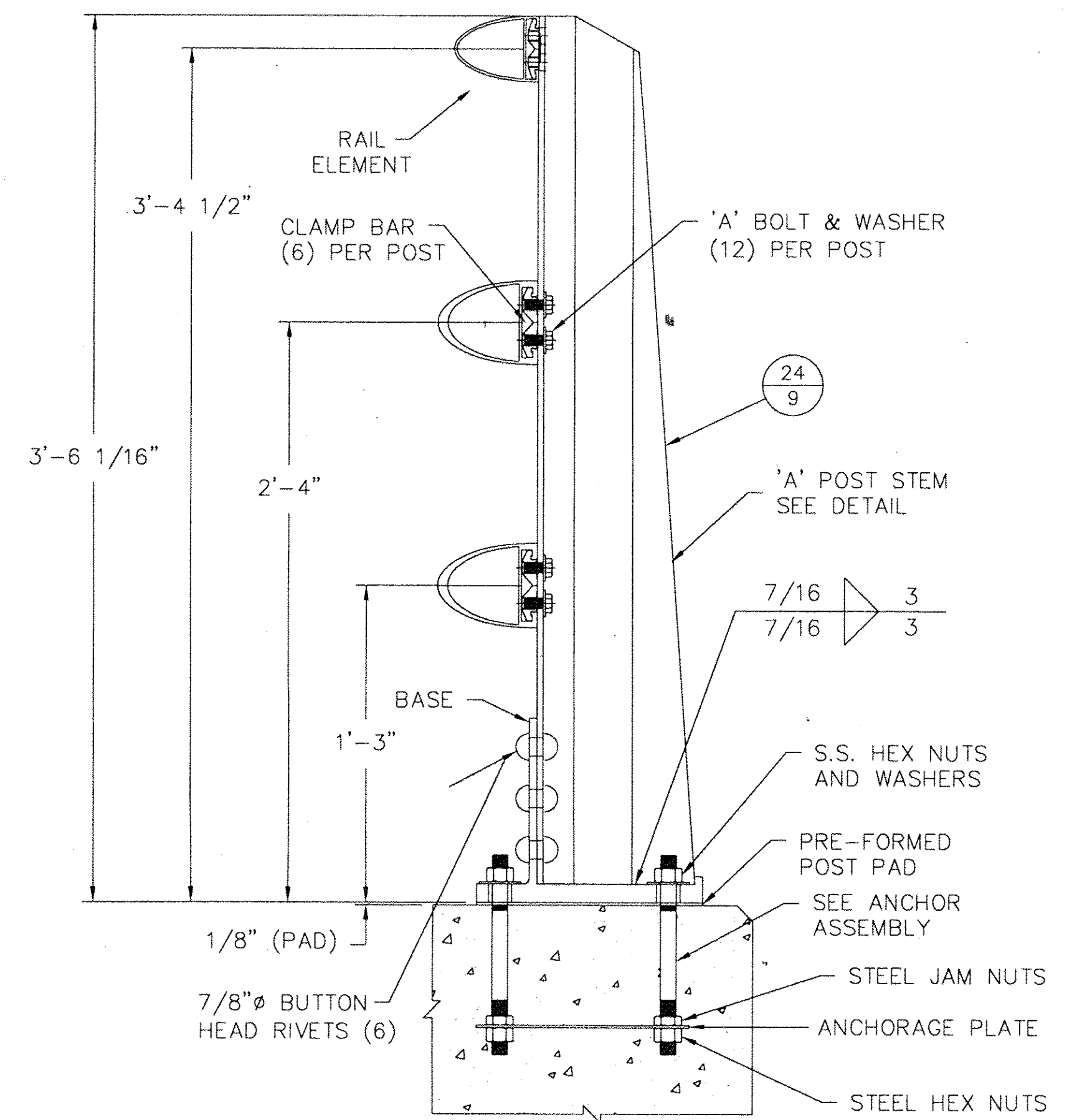
BARRIER RAIL SECTION



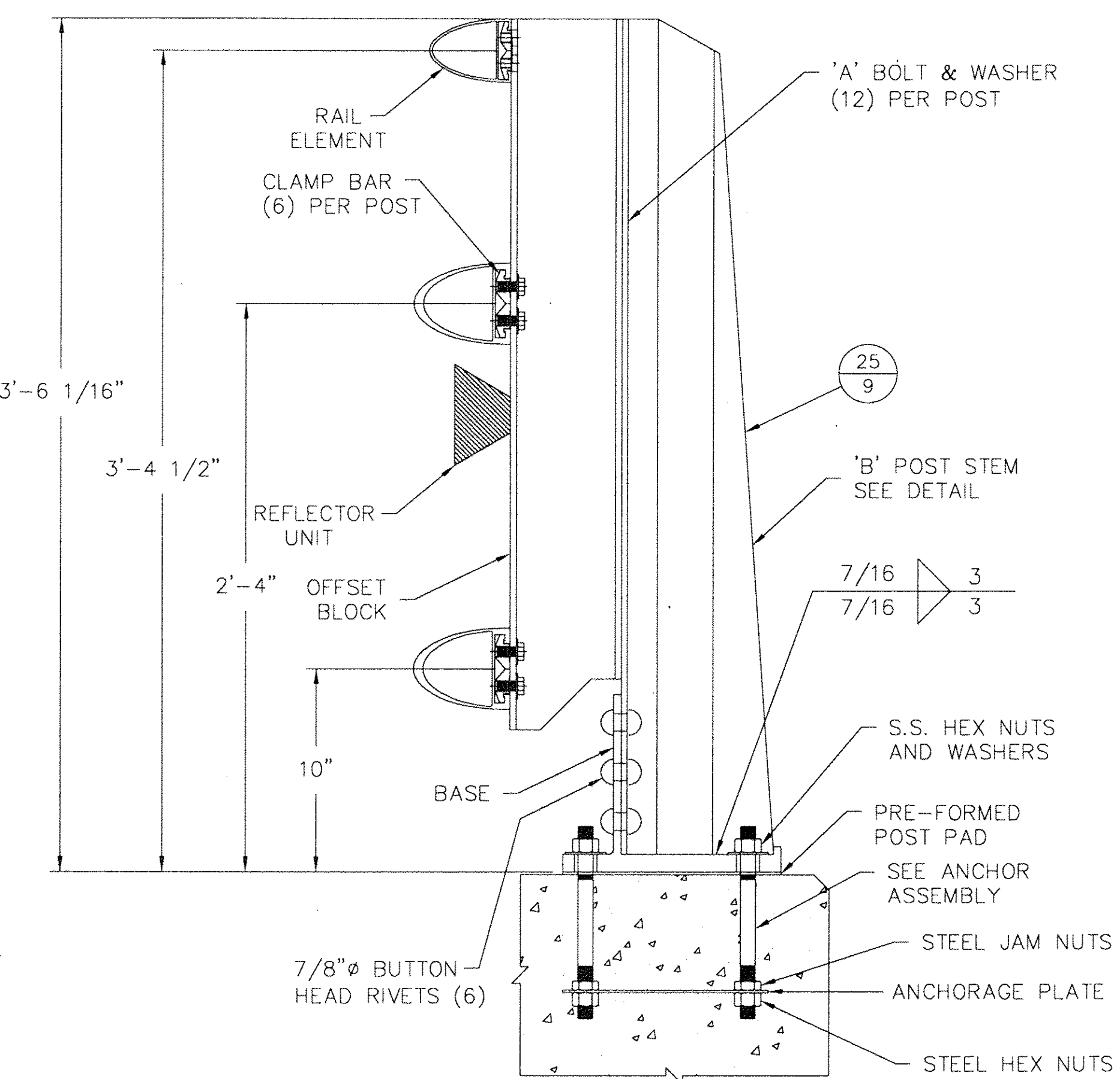
REFLECTOR DETAILS



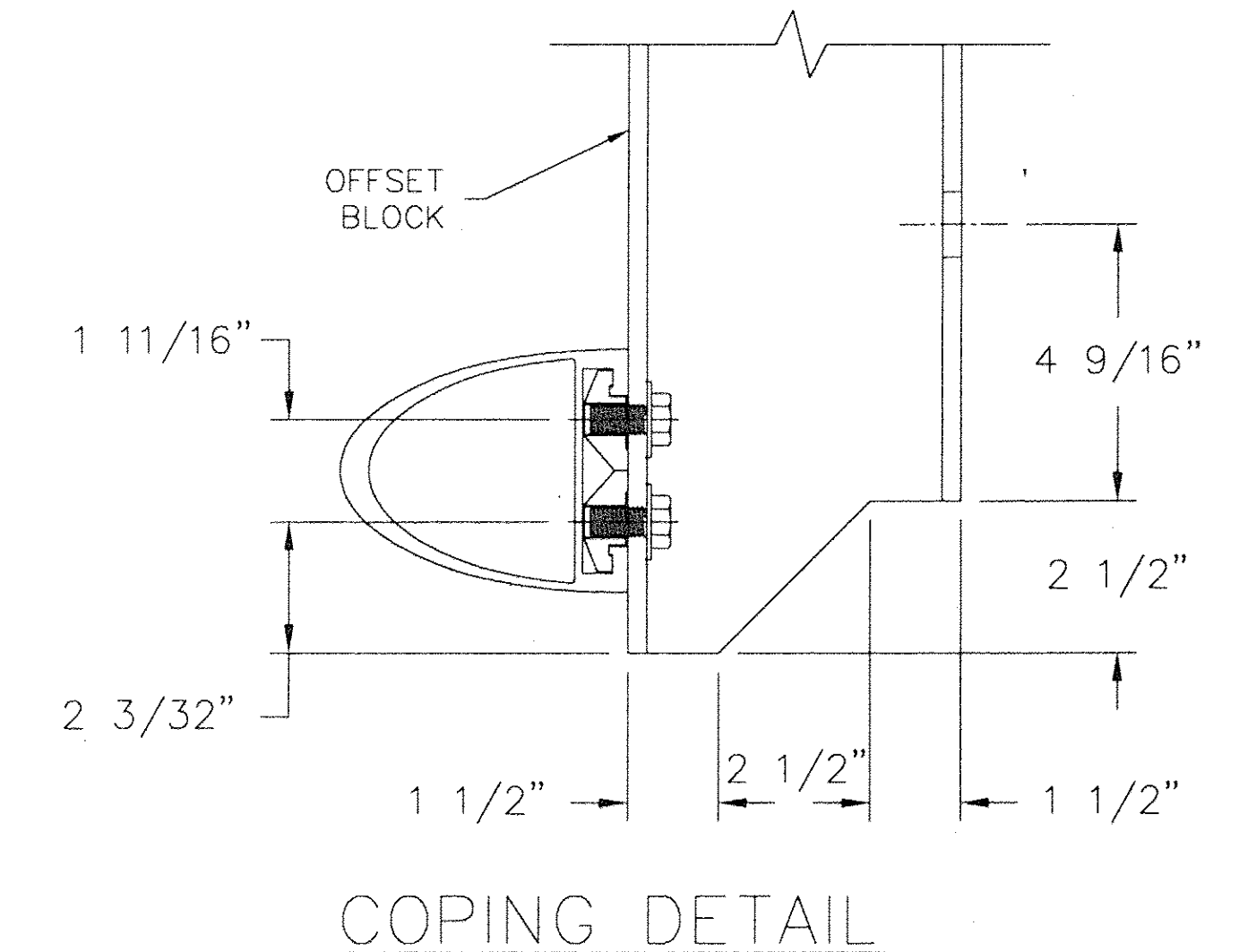
SPLICE BAR BOLT DETAILS



'A' POST ASSEMBLY SIDEWALK SIDE



'B' POST ASSEMBLY BRUSH CURB SIDE



COPING DETAIL

RAIL NOTES:

1. POSTS SHALL BE NORMAL TO FINISHED GRADE.
2. THREADS FOR ANCHOR BOLTS MAY BE ROLLED OR CUT. IF CUT THREADS ARE USED BOLT DIAMETER SHALL NOT BE LESS THAN NOMINAL DIAMETER. IF ROLLED THREADS ARE USED, BOLT DIAMETER SHALL NOT BE LESS THAN ROOT DIAMETER OF THREADS.
3. JOINTS IN RAIL LENGTH SHALL BE SPLICED AS DETAILED.
4. ENDS OF TUBE SECTIONS SHALL BE SAWED OR MILLED.
5. CUT ENDS SHALL BE TRUE AND SMOOTH.
6. EACH RAIL SECTION SHALL BE ATTACHED TO A MINIMUM OF FOUR (4) POSTS.
7. GRIND ALL EDGES SMOOTH.

MATERIAL:

1. ALUMINUM EXTRUSIONS (POSTS, BASES, RAILS, SPLICE BARS, PINS AND CLAMP BARS) SHALL BE ASTM B221, ALLOY 6061-T6 OR ALLOY 6351-T5 (MIN. 10% ELONGATION).
2. STAINLESS STEEL ANCHOR STUDS, HEX HEAD BOLTS AND HEX NUTS (TYPE 302) SHALL BE ASTM A276, (TYPE 430 MOD) OR (TYPE 304 MOD), (100,000 PSI AND 15% ELONGATION).
3. STEEL EMBEDDED JAM AND HEX NUTS SHALL BE ASTM A563 GRADE A OR BETTER.
4. ALUMINUM WASHERS SHALL BE ASTM B209, ALLOY 2024-T3 ALCLAD.
5. PREFORMED ELASTOMERIC BEARING PAD SHALL MEET REQUIREMENTS OF AASHHTO M251.

ANCHOR ASSEMBLY NOTES:

1. 3/4" & 5/8" AMERICAN STANDARD FINISHED HEXAGON STEEL NUTS ON BOTTOM OF ANCHOR ASSEMBLY, 3/4" & 5/8" AMERICAN STANDARD FINISHED HEXAGON STEEL JAM NUTS ON TOP OF ANCHORAGE PLATE.
2. 3/4" & 5/8" STAINLESS STEEL HEXAGON NUTS ON TOP ENDS OF BOLTS WITH CLASS 2B THREADS. 13/16" I.D., 2" O.D., 1/8" THICK ALUMINUM WASHERS UNDER NUTS ON TOP. ALL NUTS SHALL COMPLY WITH AMERICAN HEXAGON ANSI SPEC. B18.2. STAINLESS STEEL HEXAGON NUTS SHALL HAVE FULL THREADS.