

~~TEMPORARY AND DURABLE~~ 100 mm WHITE LINE  
 STA. 1+920.0 TO 2+060.0, SOLID LT. & RT.  
 (WITH EDGELINE BREAKS FOR BROWN AVE.  
 AND BARLOW ST.)

TEMPORARY AND DURABLE 100 mm YELLOW LINE  
 STA. 1+920.0 TO 2+060.0, SOLID LT. & RT.  
 (WITH CENTERLINE BREAKS FOR BROWN AVE.  
 AND BARLOW ST.)  
 STA. 1+944.3, LT. DOUBLE SOLID (BROWN AVE.)  
 STA. 2+044.6, RT. DOUBLE SOLID (BARLOW ST.)

~~TEMPORARY AND DURABLE~~ CROSSWALK MARKING W/DIAGONAL LINES (MOD.)  
 STA. 1+944.3, LT.  
 STA. 2+038.0, RT. TO 2+042.0, LT.  
 STA. 2+044.6, RT.

TEMPORARY AND DURABLE LETTER OR SYMBOL (TYPE 1 TAPE)  
 STA. 1+944.3, LT. - 'STOP'  
 STA. 2+044.6, RT. - 'STOP' DURABLE ONLY

ERECTING SALVAGED SIGNS  
 AS SHOWN - 3

REMOVING SIGNS  
 AS SHOWN - 5

ADJUST ELEVATION OF VALVE BOX  
 STA. 1+941.6, RT. - (2) WSO  
 STA. 2+050.0, RT. - WSO

CHANGING ELEVATION OF DI'S, CB'S OR MH'S  
 STA. 1+932.8, LT. - DI  
 STA. 1+966.5, RT. - DI  
 STA. 2+044.6, RT. - MH  
 STA. 2+050.0, RT. - MH & LT.

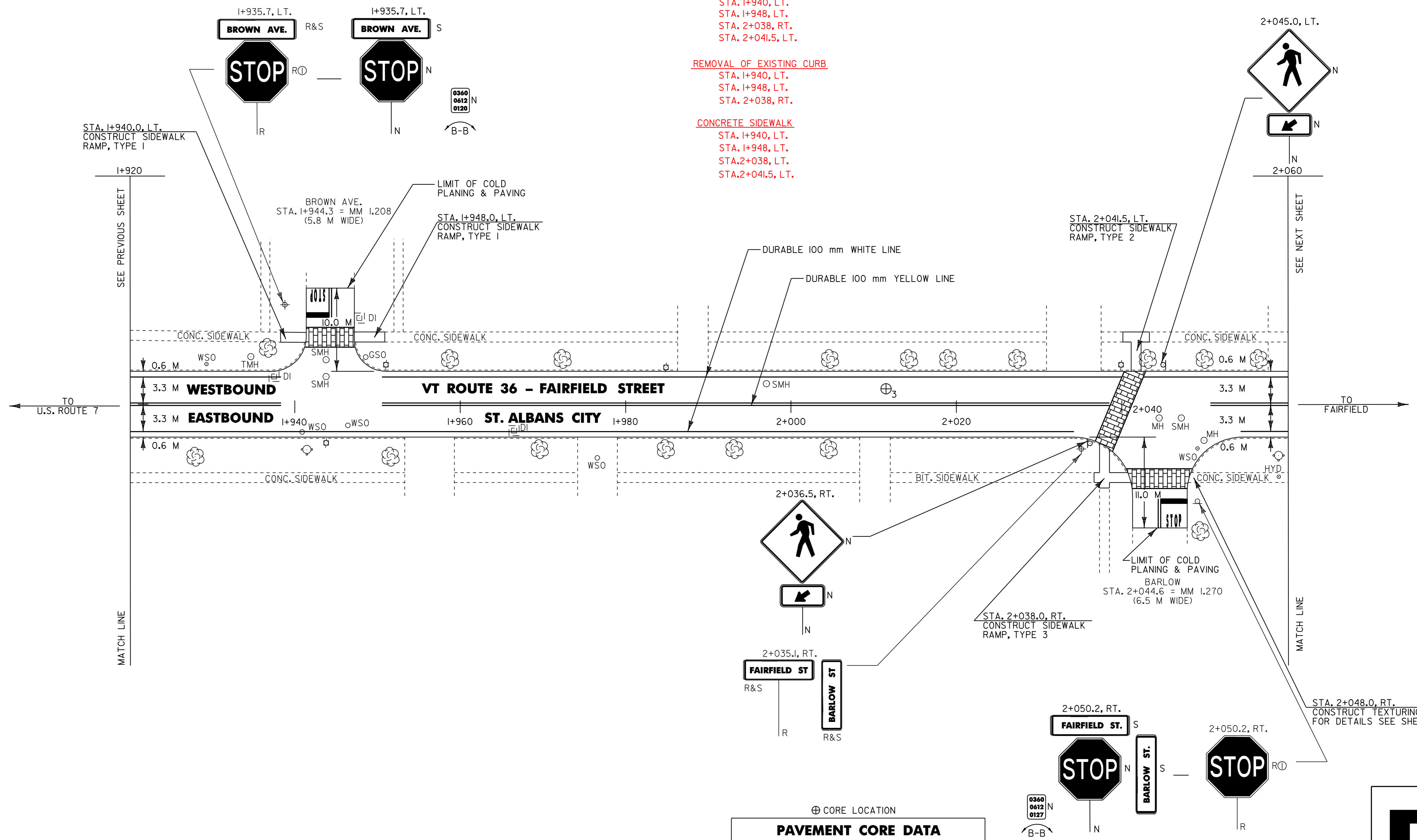
CHANGING ELEVATION OF SMH'S  
 STA. 1+939.0, LT.  
 STA. 1+939.0, LT.  
 STA. 1+997.0, LT.  
 STA. 2+047.2, RT.

~~TEMPORARY AND DURABLE~~ 600 mm STOP BAR (TYPE 1 TAPE)  
 STA. 1+944.3, LT. (BROWN AVE.)  
 STA. 2+044.6, RT. (BARLOW ST.)

CAST IN PLACE CONCRETE CURB  
 STA. 1+940, LT.  
 STA. 1+948, LT.  
 STA. 2+038, RT.  
 STA. 2+041.5, LT.

REMOVAL OF EXISTING CURB  
 STA. 1+940, LT.  
 STA. 1+948, LT.  
 STA. 2+038, RT.

CONCRETE SIDEWALK  
 STA. 1+940, LT.  
 STA. 1+948, LT.  
 STA. 2+038, LT.  
 STA. 2+041.5, LT.



⊕ CORE LOCATION

PAVEMENT CORE DATA			
CORE #	LOCATION	DEPTH (mm)	PCC
3	2+011.7, LT.	114	YES

- NOTES:
- 1) ALL DIMENSIONS IN MILLIMETERS EXCEPT WHERE OTHERWISE INDICATED.
  - 2) ALL EXISTING SIGNS NOT SHOWN SHALL BE RETAINED AS DIRECTED BY THE RESIDENT ENGINEER.
  - 3) FOR ANY TOWN HIGHWAY OR STREET DETAILS, SEE VTrans STANDARD E-193M.

<b>PROJECT LAYOUT #5</b>	PROJECT NAME: ST. ALBANS CITY	PLOT DATE: 01-FEB-2006 07:5
	PROJECT NUMBER: STP 2129(1)S	DRAWN BY: D-H
	FILE NAME: /pave/99d070/pd070.dgn	CHECKED BY:
	DESIGNED BY: D-H	SHEET 79 OF 105
	IPARM FILE NAME: pd070p05.i	

