

TEMPORARY AND DURABLE 100 mm WHITE LINE
 STA. I+420.6 TO I+480.0, SOLID LT. & RT. DURABLE ONLY STA. I+420.6 TO I+480.0, SOLID LT. & RT.
 STA. I+420.6 TO I+448.5, SOLID LT. (LANE LINE)

TEMPORARY AND DURABLE 100 mm YELLOW LINE
 STA. I+420.6 TO I+480.0, SOLID LT. & RT. DURABLE ONLY STA. I+420.6 TO I+480.0, SOLID LT. & RT.
 STA. I+420.6 TO I+448.5, SOLID LT. (LANE LINE)

TEMPORARY AND DURABLE CROSSWALK MARKING W/DIAGONAL LINES (MOD.)
 STA. I+417.5
 I+406 ~ I+409

TEMPORARY LETTER OR SYMBOL
 STA. I+422.4, LT. - (2)
 STA. I+444.8, LT. - (2)



TEMPORARY AND DURABLE 600 mm STOP BAR (TYPE ITAPE)
 STA. I+420.6, LT.

CHANGING ELEVATION OF DI'S, CB'S OR MH'S
 STA. I+478.3, LT. - MH
 STA. I+478.3, LT. - DI
 STA. I+480.0, RT. - DI

CHANGING ELEVATION OF SMH'S
 STA. I+476.8, C

DURABLE LETTER OR SYMBOL (TYPE ITAPE)
 STA. I+422.4, LT. - (2) 425
 STA. I+426.4, LT. - "ONLY" (2) 428
 STA. I+444.8, LT. - (2) 451
 STA. I+448.5, LT. - "ONLY" (2) 455

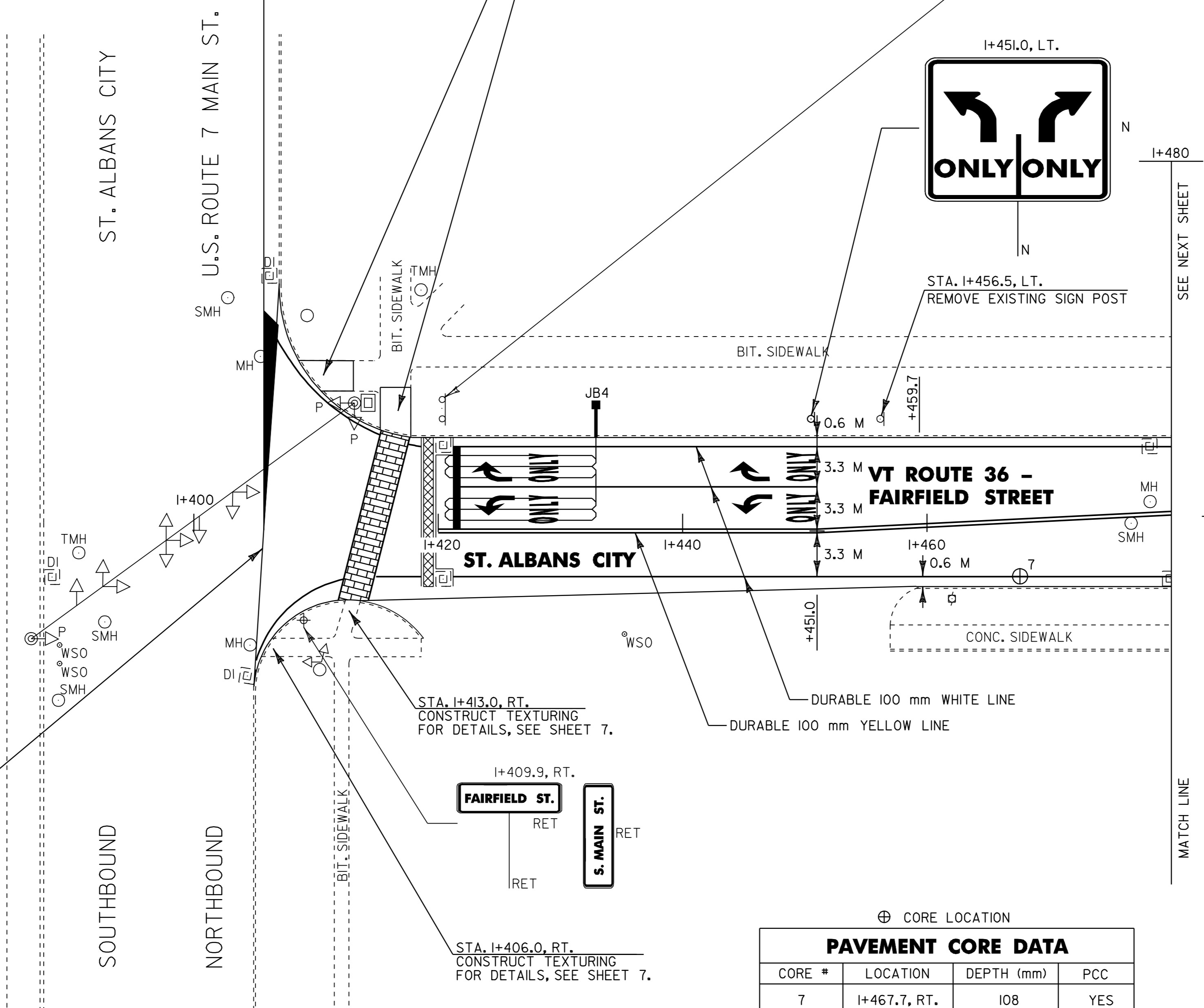
REMOVING SIGNS
 AS SHOWN - 15

CONCRETE SIDEWALK
 STA. I+406, RT.
 STA. I+413, RT.

CAST IN PLACE CONCRETE CURB
 STA. I+413, RT.

REMOVAL OF EXISTING CURB
 STA. I+413, RT.

**BEGIN STP 2129(1) S
 VT ROUTE 36
 ST. ALBANS CITY
 STA 1+406.57 = MM 0.874**



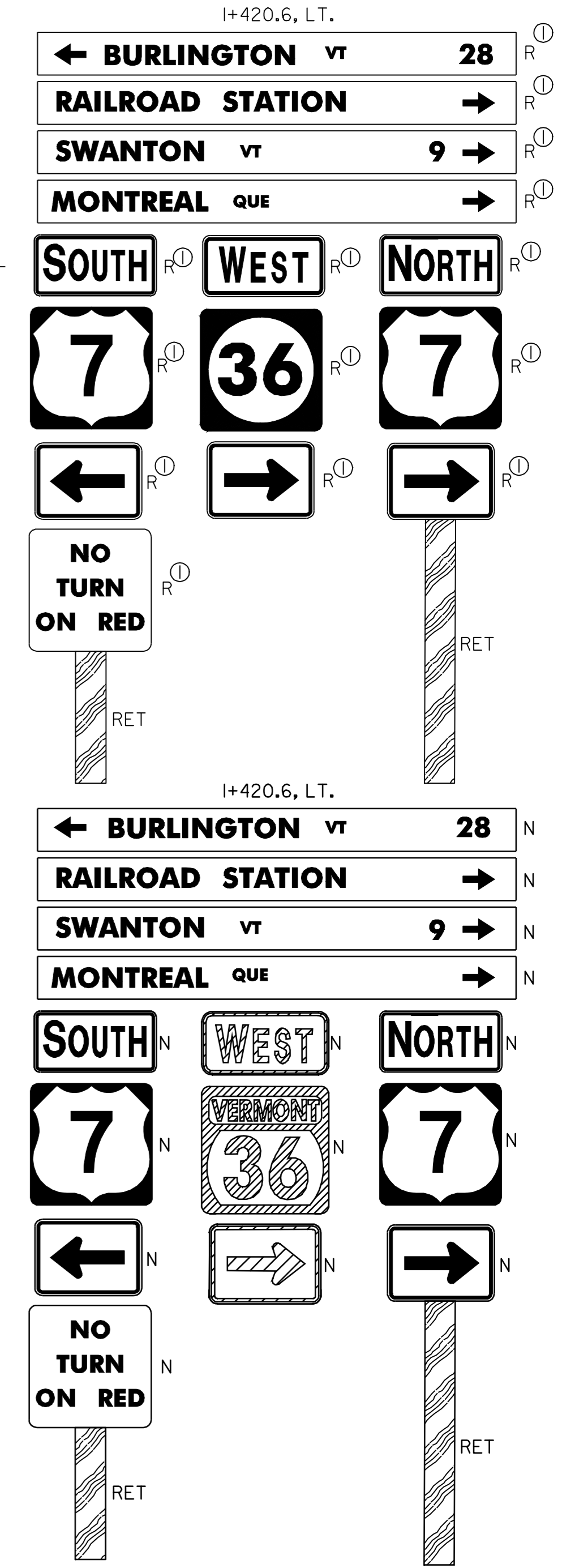
ST. ALBANS CITY U.S. ROUTE 7
 FOR DETAILS, SEE SHEETS 12 - 68.



⊕ CORE LOCATION

CORE #	LOCATION	DEPTH (mm)	PCC
7	I+467.7, RT.	108	YES

- NOTES:
- 1) ALL DIMENSIONS IN MILLIMETERS EXCEPT WHERE OTHERWISE INDICATED.
 - 2) ALL EXISTING SIGNS NOT SHOWN SHALL BE RETAINED AS DIRECTED BY THE RESIDENT ENGINEER.
 - 3) FOR ANY TOWN HIGHWAY OR STREET DETAILS, SEE VTrans STANDARD E-193M.
 - 4) FOR VEHICLE DETECTOR LOOP DETAILS SEE SHEET 10.



PROJECT LAYOUT #1

PROJECT NAME: ST. ALBANS CITY
 PROJECT NUMBER: STP 2129(1)S
 FILE NAME: /pave/99d070/pd070.dgn
 PROJECT LEADER: JLL
 DESIGNED BY: D-H
 IPARM FILE NAME: pd070p01.i
 PLOT DATE: 01-FEB-2006 07:59
 DRAWN BY: D-H
 CHECKED BY:
 SHEET 75 OF 105

