

~~TEMPORARY & DURABLE 100 mm WHITE LINE~~
 STA. 2+740.0 TO 2+820.0, SOLID LT. & RT.
 (WITH EDGELINE BREAK FOR BEST CT.)

TEMPORARY & DURABLE 100 mm YELLOW LINE
 STA. 2+740.0 TO 2+770.0, SOLID LT. & RT.
 STA. 2+770.0 TO 2+820, DOUBLE SOLID LT. & RT.
 (WITH CENTERLINE BREAK FOR BEST CT.)
 STA. 2+802.3, DOUBLE SOLID LT. (BEST CT.)

~~TEMPORARY & DURABLE 200 mm YELLOW LINE~~
 STA. 2+770.0 TO 2+820.0, SOLID LT. & RT. DIAGONALS

REMOVING SIGNS
 AS SHOWN - 6

ADJUST ELEVATION OF VALVE BOX
 STA. 2+803.0, LT. - WSO

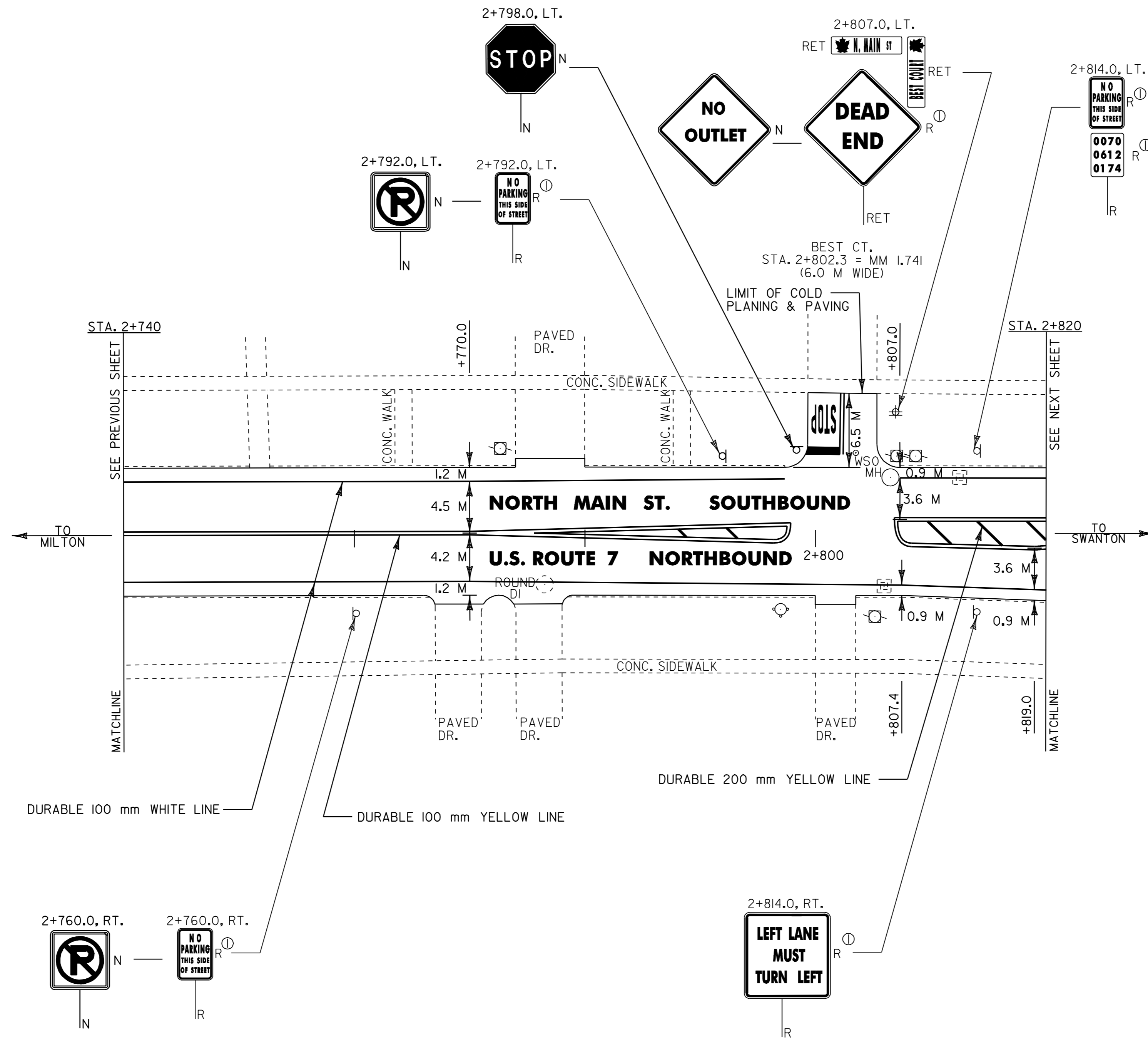
REHABILITATION OF DI'S, CB'S OR MH'S - CLASS I
 STA. 2+776.0, RT. - ROUND DI
 STA. 2+806.0, RT. - DI
 STA. 2+812.5, LT. - DI



CHANGING ELEVATION OF DI'S, CB'S OR MH'S
 STA. 2+806.0, LT. - MH

~~TEMPORARY & DURABLE 600 mm STOP BAR (TYPE I TAPE)~~
 STA. 2+802.3, LT.

TEMPORARY AND DURABLE LETTER OR SYMBOL (TYPE I TAPE)
 STA. 2+802.3, LT. - "STOP"



- NOTES: 1) ALL DIMENSIONS IN MILLIMETERS EXCEPT WHERE OTHERWISE INDICATED.
 2) ALL EXISTING SIGNS NOT SHOWN SHALL BE RETAINED AS DIRECTED BY THE RESIDENT ENGINEER.
 3) FOR ANY TOWN HIGHWAY OR STREET DETAILS, SEE VTrans STANDARD E-193M.

LAYOUT SHEET #20

PROJECT NAME: ST. ALBANS CITY	PLOT DATE: 01-FEB-2006 07:5
PROJECT NUMBER: STP_9804(I)S	DRAWN BY: D-H
FILE NAME: Z:\pave\97\d150\pdl50.dgn	CHECKED BY:
DESIGNED BY: D-H	SHEET 41 OF 105
IPARM FILE NAME: pdl50p20.i	

