

TEMPORARY LETTER OR SYMBOL  
 STA. 2+129.8, LT. - "ONLY" 125.0  
 STA. 2+154.7, LT. - "ONLY" (KINGMAN ST.)  
 STA. 2+184.0, RT. - "STOP"

DURABLE LETTER OR SYMBOL (TYPE I TAPE)  
 STA. 2+126.2, LT. - "ONLY" 135.0  
 STA. 2+129.8, LT. - "ONLY" 139.0  
 STA. 2+154.7, LT. - "ONLY" (KINGMAN ST.)  
 STA. 2+154.7, LT. - "ONLY" (KINGMAN ST.)  
 STA. 2+184.0, RT. - "STOP"

TEMPORARY & DURABLE 200 mm YELLOW LINE  
 STA. 2+160.0 TO 2+220.0, SOLID LT. (DIAGONALS)

TEMPORARY & DURABLE 600 mm STOP BAR (TYPE I TAPE)  
 STA. 2+154.0, LT. (KINGMAN ST.)  
 STA. 2+184.0, RT. (BANK ST.)

PAINTED CURB  
 IN NO-PARKING AREAS AS DIRECTED BY RESIDENT ENGINEER

CHANGING ELEVATION OF SMH'S  
 STA. 2+085.0, LT.  
 STA. 2+189.0, LT.



TEMPORARY & DURABLE 100 mm WHITE LINE  
 STA. 2+095.0 TO 2+125.0, DOTTED RT.  
 STA. 2+125.0 TO 2+154.0, SOLID RT. (LANE LINE)  
 STA. 2+154.0, SOLID LT. (KINGMAN ST. EDGELINES, & DIAGONALS)  
 STA. 2+184.0, SOLID RT. (BANK ST. EDGELINES, & DIAGONALS)

REHABILITATION OF DI'S, CB'S OR MH'S - CLASS I  
 STA. 2+090.0, LT. - DI  
 STA. 2+091.0, RT. - DI  
 STA. 2+148.5, RT. - DI  
 STA. 2+165.0, LT. - DI  
 STA. 2+180.0, RT. - DI  
 STA. 2+189.0, RT. - DI  
 STA. 2+200.0, RT. - DI  
 STA. 2+216.0, LT. - DI

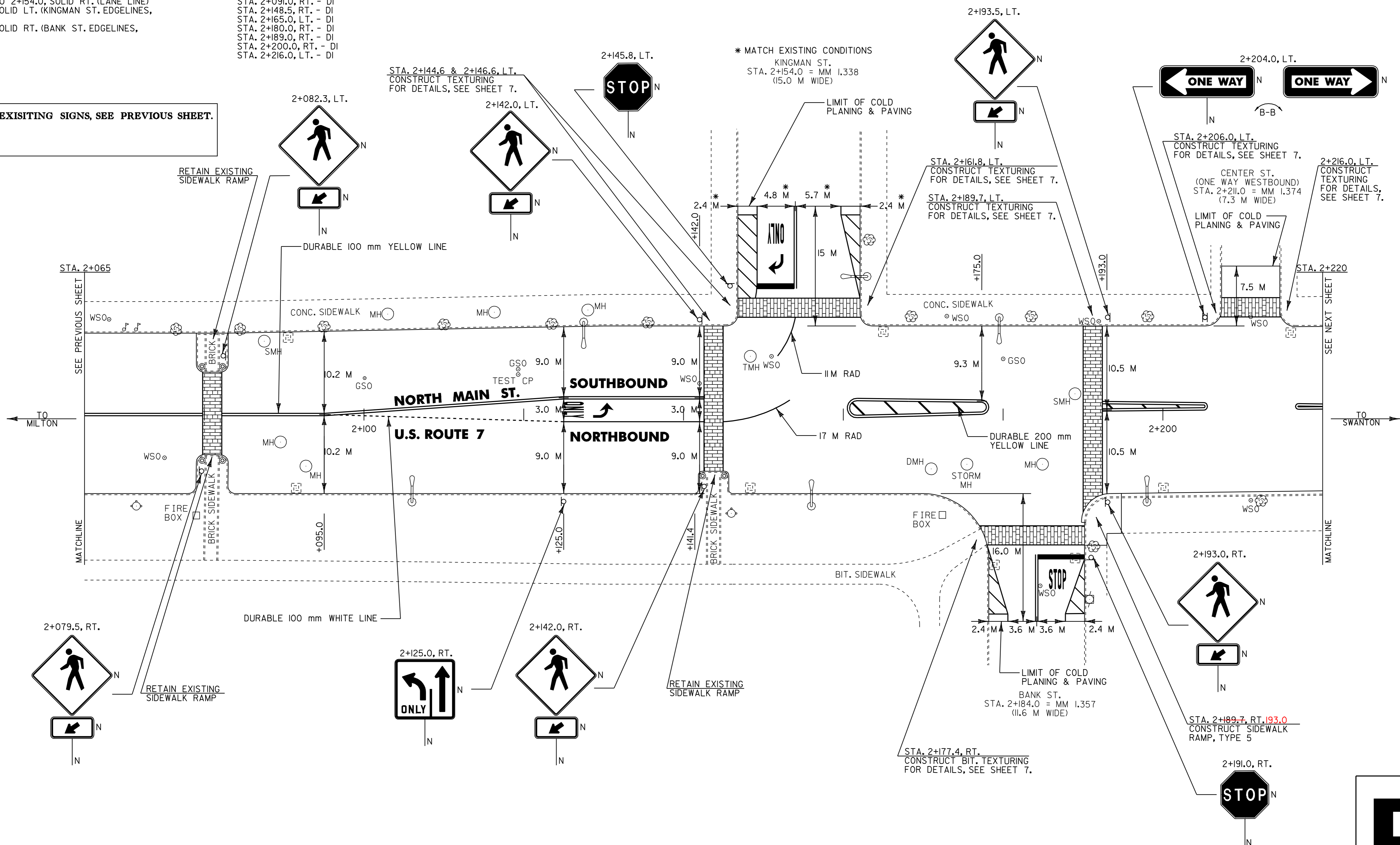
TEMPORARY & DURABLE CROSSWALK WITH DIAGONAL LINES (MOD.)  
 STA. 2+071.7  
 STA. 2+143.2  
 STA. 2+154.0, LT. (KINGMAN ST.)  
 STA. 2+184.0, RT. (BANK ST.)  
 STA. 2+191.8  
 STA. 2+211.0, LT. (CENTER ST.)

TEMPORARY & DURABLE 100 mm YELLOW LINE  
 STA. 2+065.0 TO 2+142.0, SOLID LT. & RT.  
 STA. 2+154.0, DOUBLE SOLID LT. (KINGMAN ST.)  
 STA. 2+160.0 TO 2+220.0, DOUBLE SOLID (WITH CENTERLINE BREAKS FOR BANK ST. & CENTER ST.)  
 STA. 2+184.0, DOUBLE SOLID RT. (BANK ST.)

CHANGING ELEVATION OF DI'S, CB'S OR MH'S  
 STA. 2+089.0, RT. - MH  
 STA. 2+092.0, RT. - MH  
 STA. 2+171.0, RT. - DRAIN MH  
 STA. 2+175.0, RT. - STORM MH  
 STA. 2+185.0, RT. - MH  
 STA. 2+211.0, RT. - MH

ADJUST ELEVATION OF VALVE BOX  
 STA. 2+075.0, RT. - WSO  
 STA. 2+175.0, LT. - TEST CP  
 STA. 2+142.0, LT. - WSO  
 STA. 2+150.0, LT. - WSO  
 STA. 2+185.0, RT. - WSO  
 STA. 2+211.0, LT. - WSO

NOTE: FOR EXISTING SIGNS, SEE PREVIOUS SHEET.



- NOTES:
- 1) ALL DIMENSIONS IN MILLIMETERS EXCEPT WHERE OTHERWISE INDICATED.
  - 2) ALL EXISTING SIGNS NOT SHOWN SHALL BE RETAINED AS DIRECTED BY THE RESIDENT ENGINEER.
  - 3) FOR ANY TOWN HIGHWAY OR STREET DETAILS, SEE VTrans STANDARD E-193M.

<b>PROJECT LAYOUT #15B PROPOSED SIGNS</b>	PROJECT NAME: ST. ALBANS CITY	PLOT DATE: 01-FEB-2006 07:45
	PROJECT NUMBER: STP_9804(1)S	DRAWN BY: D-H
	FILE NAME: Z:\pave\97\d150\pd150.dgn	CHECKED BY:
	DESIGNED BY: D-H	SHEET 36 OF 105

