

**TEMPORARY & DURABLE 100 mm WHITE LINE**  
 STA. 1+740.0 TO 1+835.0, SOLID LT. & RT. (PARKING SPACES & DIAGONALS WITH EDGELINE BREAKS FOR CROSSWALKS & STEBBINS ST. & FERRIS ST.)  
 STA. 1+811.0, SOLID LT. (STEBBINS ST. EDGELINES)  
 STA. 1+811.0, SOLID RT. (FERRIS ST. EDGELINES)  
 STA. 1+825.0, DOTTED RT.

**TEMPORARY & DURABLE 100 mm YELLOW LINE**  
 STA. 1+740.0 TO 1+785.0, SOLID LT. & RT. (WITH CENTERLINE BREAK FOR CROSSWALK)  
 STA. 1+785.0 TO 1+835.0, DOUBLE SOLID LT. & RT. (WITH CENTERLINE BREAKS FOR STEBBINS ST., FERRIS ST. & CROSSWALK)  
 STA. 1+811.0, DOUBLE SOLID LT. (STEBBINS ST.)  
 STA. 1+811.0, DOUBLE SOLID RT. (FERRIS ST.)

**TEMPORARY & DURABLE 200 mm YELLOW LINE**  
 STA. 1+785.0 TO 1+835.0, SOLID RT. (DIAGONALS) (WITH BREAK FOR STEBBINS ST., FERRIS ST. & CROSSWALK)

**TEMPORARY & DURABLE CROSSWALK WITH DIAGONAL LINES (MOD.)**  
 STA. 1+758.0  
 STA. 1+811.0, RT. (FERRIS ST.)  
 STA. 1+811.0, RT. (STEBBINS ST.)  
 STA. 1+818.0

**TEMPORARY & DURABLE 600 mm STOP BAR (TYPE ITAPE)**  
 STA. 1+811.0, RT. (FERRIS ST.)  
 STA. 1+811.0, LT. (STEBBINS ST.)

**TEMPORARY & DURABLE LETTER OR SYMBOL (TYPE ITAPE)**  
 STA. 1+811.0, LT. - 'STOP'  
 STA. 1+811.0, RT. - 'STOP'

**REHABILITATION OF D'S, CB'S OR MH'S - CLASS I**  
 STA. 1+789.0, LT. & RT. - D'S  
 STA. 1+816.0, RT. - DI

**ADJUST ELEVATION OF VALVE BOX**  
~~STA. 1+767.5, LT. - WSO~~  
~~STA. 1+808.0, LT. - WSO~~  
~~STA. 1+810.5, LT. - WSO~~  
~~STA. 1+814.5, RT. - WSO (2)~~

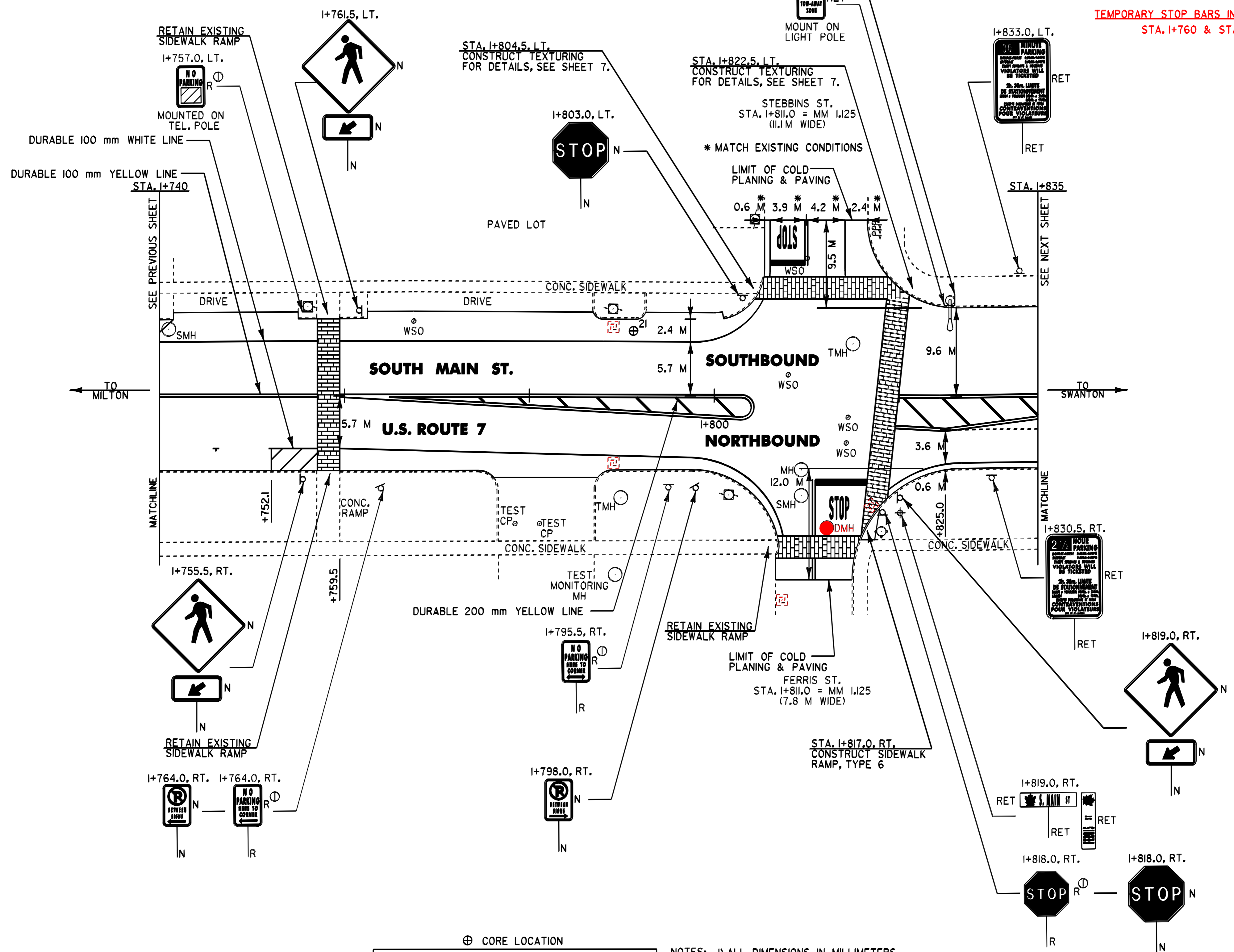
**CHANGING ELEVATION OF D'S, CB'S OR MH'S**  
 STA. 1+810.0, RT. - MH  
 STA. 1+812.0, RT. - DRAIN MH  
 STA. 1+816.0, RT. - MH

**CHANGING ELEVATION OF SMH'S**  
 STA. 1+741.0, LT.  
 STA. 1+810.0, RT.

~~PAINTED CURB~~  
~~IN NO PARKING AREAS AS DIRECTED BY RESIDENT ENGINEER~~

REMOVING SIGNS  
 AS SHOWN - 4

TEMPORARY STOP BARS INSTALLED (8-12-03)  
 STA. 1+760 & STA. 2+400



⊕ CORE LOCATION

PAVEMENT CORE DATA			
CORE #	LOCATION	DEPTH (mm)	PCC
21	1+791.2, LT.	140	NO

- NOTES:
- 1) ALL DIMENSIONS IN MILLIMETERS EXCEPT WHERE OTHERWISE INDICATED.
  - 2) ALL EXISTING SIGNS NOT SHOWN SHALL BE RETAINED AS DIRECTED BY THE RESIDENT ENGINEER.
  - 3) FOR ANY TOWN HIGHWAY OR STREET DETAILS, SEE VTRANS STANDARD E-193M.

**LAYOUT SHEET #12**

PROJECT NAME: ST. ALBANS CITY  
 PROJECT NUMBER: SIP 9804(1)S  
 FILE NAME: 2006021502150.dwg PLOT DATE: 01-FEB-2006 07:4  
 PROJECT LEADER: JLL DRAWN BY: D-H  
 DESIGNED BY: D-H CHECKED BY: \_\_\_\_\_  
 IPARM FILE NAME: pd150p12.i SHEET 31 OF 105

