

~~TEMPORARY & DURABLE 100 mm WHITE LINE~~
 STA. I+260.0 TO I+420.0, LT. & RT. (PARKING SPACES & DIAGONALS WITH BREAKS FOR GILMAN ST. & DIAMOND ST.)

~~TEMPORARY & DURABLE 100 mm YELLOW LINE~~
 STA. I+260.0 TO I+420.0, SOLID LT. & RT. (WITH CENTERLINE BREAKS FOR GILMAN ST. & DIAMOND ST.)
 STA. I+276.0, DOUBLE SOLID LT. (GILMAN ST.)
 STA. I+370.0, DOUBLE SOLID RT. (DIAMOND ST.)

~~TEMPORARY & DURABLE CROSSWALK WITH DIAGONAL LINES (MOD.)~~
 STA. I+276.0, LT. (GILMAN ST.)
 STA. I+370.0, RT. (DIAMOND ST.)

~~TEMPORARY & DURABLE LETTER OR SYMBOL (TYPE I TAPE)~~
 STA. I+275.5, LT. - 'STOP'
 STA. I+296.5, LT. - 'STOP'
 STA. I+370.0, RT. - 'STOP'

~~REMOVING SIGNS~~
 AS SHOWN - 7

~~ADJUST ELEVATION OF VALVE BOX~~
 STA. I+365.0, RT. - WSO
 STA. I+370.0, RT. - WSO
 270.0

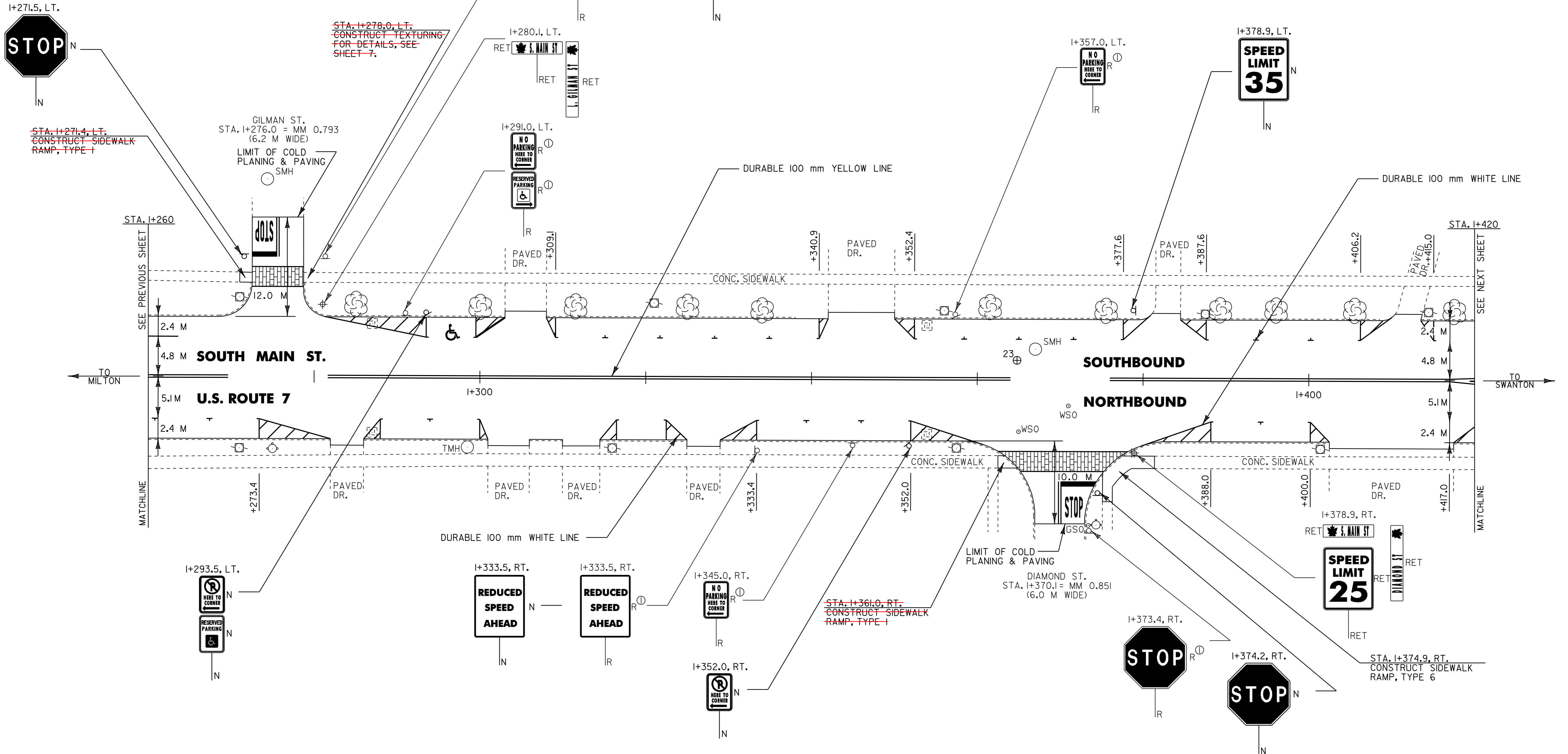


~~REHABILITATION OF DI'S, CB'S OR MH'S - CLASS I~~
 STA. I+287.0, LT. & RT. - DI'S
 STA. I+354.0, LT. & RT. - DI'S

~~CHANGING ELEVATION OF SMH'S~~
 STA. I+367.0, LT.

~~TEMPORARY & DURABLE 600 mm STOP BAR (TYPE I TAPE)~~
 STA. I+276.0, LT. (GILMAN ST.)
 STA. I+370.0, RT. (DIAMOND ST.)

~~PAINTED CURB~~
~~IN NO-PARKING AREAS AS~~
~~DIRECTED BY RESIDENT ENGINEER~~



⊕ CORE LOCATION

PAVEMENT CORE DATA			
CORE #	LOCATION	DEPTH (mm)	PCC
23	I+364.7, LT.	165	NO

NOTES: 1) ALL DIMENSIONS IN MILLIMETERS EXCEPT WHERE OTHERWISE INDICATED.
 2) ALL EXISTING SIGNS NOT SHOWN SHALL BE RETAINED AS DIRECTED BY THE RESIDENT ENGINEER.
 3) FOR ANY TOWN HIGHWAY OR STREET DETAILS, SEE VTrans STANDARD E-193M.

LAYOUT SHEET #9

PROJECT NAME: ST. ALBANS CITY
 PROJECT NUMBER: STP_9804(I)S
 FILE NAME: zpxe297d150/pd150.dgn PLOT DATE: 01-FEB-2006 07:4
 PROJECT LEADER: JLL DRAWN BY: D-H
 DESIGNED BY: D-H CHECKED BY:
 IPARM FILE NAME: pd150p09.i SHEET 28 OF 105

