

TEMPORARY & DURABLE 100 mm WHITE LINE
 STA. I+240.0 TO I+260.0, RT. (PARKING SPACES & DIAGONALS)
 STA. I+120.0 TO I+260.0, SOLID LT. & RT. (WITH EDGELINE BREAKS FOR CROSSWALK & GILMAN AVE.)

TEMPORARY & DURABLE 100 mm YELLOW LINE
 STA. I+120.0 TO I+260.0, SOLID LT. & RT. (WITH CENTERLINE BREAKS FOR CROSSWALK & GILMAN AVE.)
 STA. I+236.0, DOUBLE SOLID RT. (GILMAN AVE.)

TEMPORARY & DURABLE CROSSWALK WITH DIAGONAL LINES (MOD.)
 STA. I+229.0
 STA. I+236.0, RT. (GILMAN AVE.)

REMOVING SIGNS
 AS SHOWN - 7

ERECTING SALVAGED SIGNS
 AS SHOWN - 2

ADJUST ELEVATION OF VALVE BOX
 STA. I+146.5, RT. - WSO
 STA. I+148.0, RT. - WSO
 STA. I+149.0, RT. - WSO
~~STA. I+181.0, RT. - WSO~~
 STA. I+182.0, RT. - WSO (2)
 STA. I+183.0, RT. - WSO
~~STA. I+233.0, RT. - WSO~~

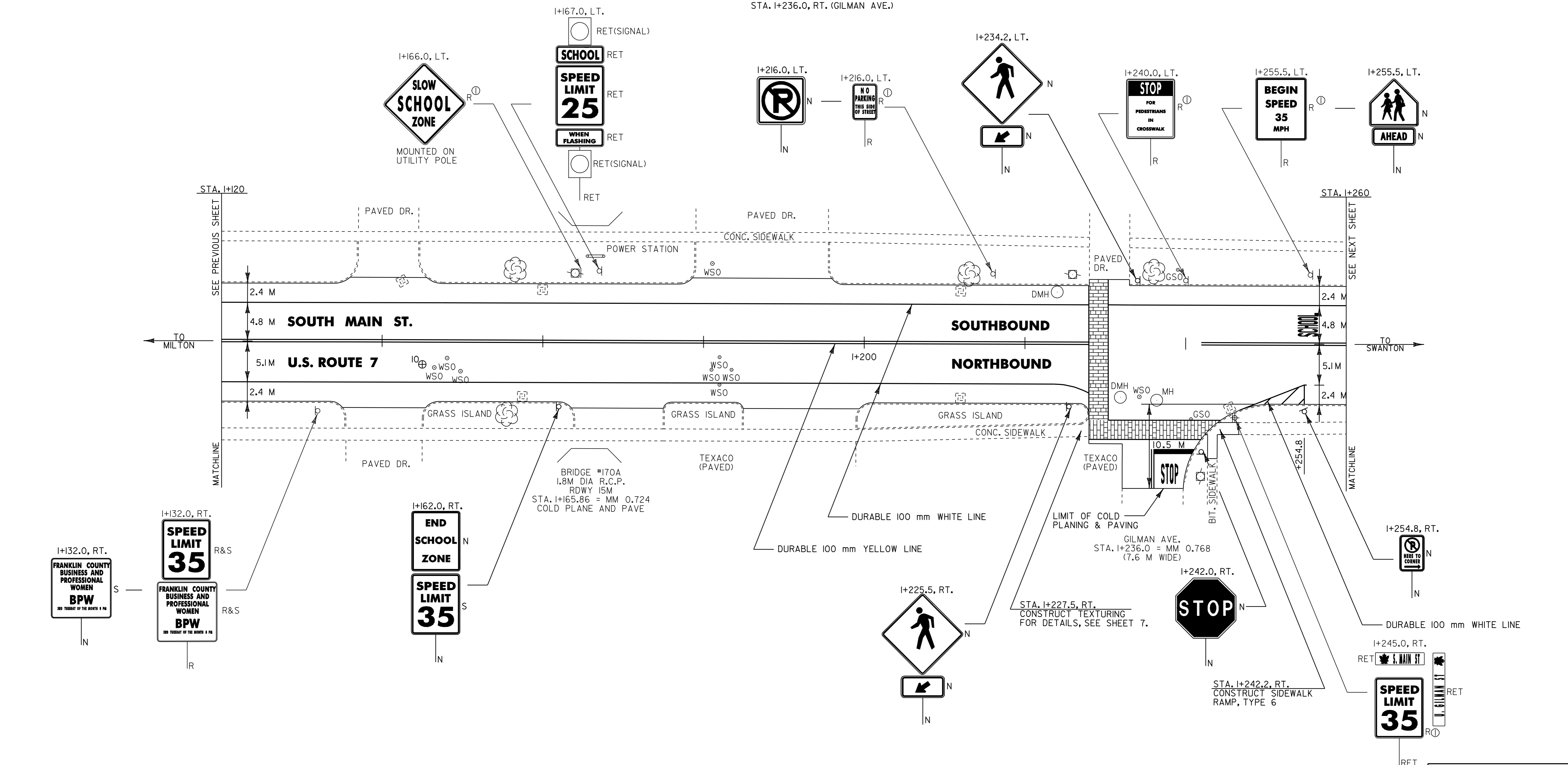
REHABILITATION OF DI'S, CB'S OR MH'S - CLASS I
 STA. I+142.5, LT. - DI
 STA. I+157.5, RT. - DI
 STA. I+160.0, LT. - DI
 STA. I+212.0, LT. & RT. - DI'S
 STA. I+242.0, RT. - DI

CHANGING ELEVATION OF DI'S, CB'S OR MH'S
 STA. I+224.0, LT. - MH
 STA. I+231.0, RT. - DRAIN MH
 STA. I+235.0, RT. - MH

~~PAINTED CURB~~
~~IN NO-PARKING AREAS AS DIRECTED BY RESIDENT ENGINEER~~

TEMPORARY & DURABLE LETTER OR SYMBOL (TYPE ITAPE)
 STA. I+236.0, RT. - 'STOP'
 260 STA. I+255.5, LT. - 'SCHOOL'

TEMPORARY & DURABLE 600 mm STOP BAR (TYPE ITAPE)
 STA. I+236.0, RT. (GILMAN AVE.)



⊕ CORE LOCATION

| PAVEMENT CORE DATA | | | |
|--------------------|--------------|------------|-----|
| CORE # | LOCATION | DEPTH (mm) | PCC |
| 10 | I+145.9, RT. | 140 | NO |

- NOTES:
- 1) ALL DIMENSIONS IN MILLIMETERS EXCEPT WHERE OTHERWISE INDICATED.
 - 2) ALL EXISTING SIGNS NOT SHOWN SHALL BE RETAINED AS DIRECTED BY THE RESIDENT ENGINEER.
 - 3) FOR ANY TOWN HIGHWAY OR STREET DETAILS, SEE VTrans STANDARD E-193M.

LAYOUT SHEET #8

PROJECT NAME: ST. ALBANS CITY
 PROJECT NUMBER: STP_9804(I)S
 FILE NAME: 2pave297d1502pd150.dgn PLOT DATE: 01-FEB-2006 07:4
 PROJECT LEADER: JLL DRAWN BY: D-H
 DESIGNED BY: D-H CHECKED BY:
 IPARM FILE NAME: pd150p08.i SHEET 27 OF 105

