

**TEMPORARY & DURABLE 100 mm WHITE LINE**  
 STA. 0+000.0 TO 0+165.0, SOLID LT. & RT.  
 (WITH EDGELINE BREAKS FOR PARSONS  
 AVE. & ORCHARD ST.)  
 STA. 0+123.4, RT. (ORCHARD ST. EDGELINES)

**TEMPORARY & DURABLE 100 mm YELLOW LINE**  
 STA. 0+000.0 TO 0+165.0, SOLID LT. & RT.  
 (WITH CENTERLINE BREAKS FOR PARSONS  
 AVE. & ORCHARD ST.)  
 STA. 0+014.0, DOUBLE SOLID RT. (PARSONS AVE.)  
 STA. 0+123.4, DOUBLE SOLID RT. (ORCHARD ST.)

**TEMPORARY & DURABLE CROSSWALK WITH DIAGONAL LINES (MOD.)**  
 STA. 0+014.0, RT. (PARSONS AVE.)  
 STA. 0+123.4, RT. (ORCHARD ST.)

**REMOVING SIGNS**  
 AS SHOWN - 6

**CHANGING ELEVATION OF SMH'S**  
 STA. 0+013.0, LT.  
 STA. 0+017.0, RT.  
 STA. 0+122.5, LT.

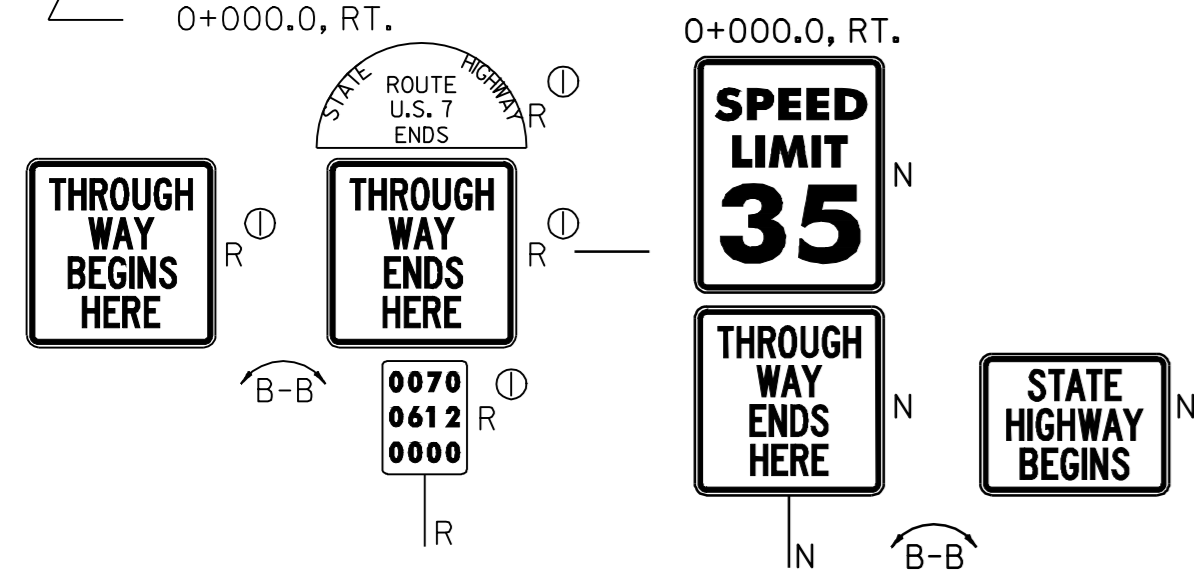
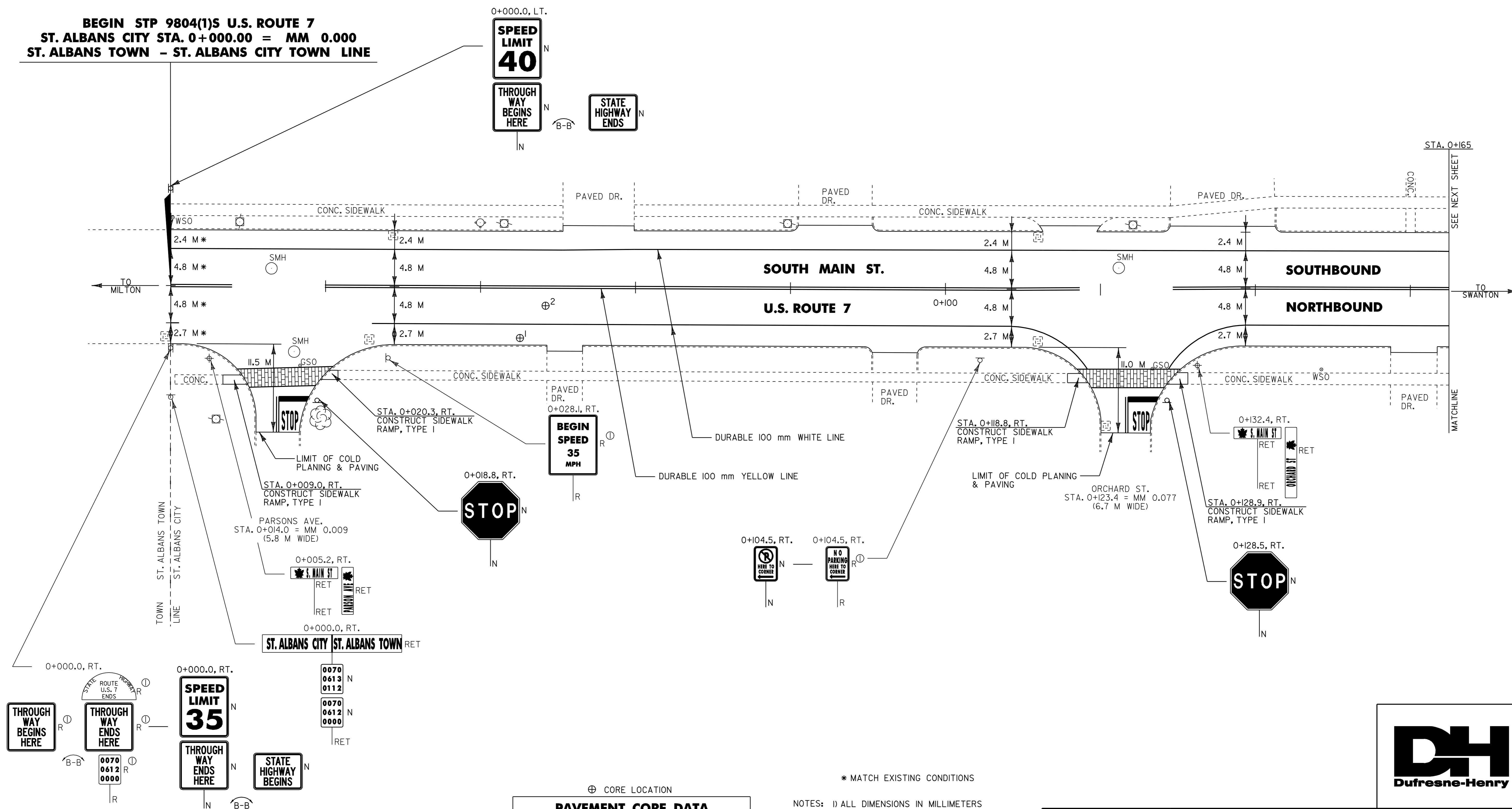
**REHABILITATION OF DI'S, CB'S OR MH'S - CLASS I**  
 STA. 0+000.0, RT. - DI  
 STA. 0+028.7, LT. & RT. - DI'S  
 STA. 0+112.0, LT. & RT. - DI'S  
 STA. 0+121.0, RT. - DI

**TEMPORARY & DURABLE 600 mm STOP BAR (TYPE I TAPE)**  
 STA. 0+014.0, RT. (PARSONS AVE.)  
 STA. 0+123.4, RT. (ORCHARD ST.)

**TEMPORARY & DURABLE LETTER OR SYMBOL (TYPE I TAPE)**  
 STA. 0+014.0, RT. - "STOP"  
 STA. 0+123.4, RT. - "STOP"

**ADJUST ELEVATION OF VALVE BOX**  
 STA. 0+005

**BEGIN STP 9804(1)S U.S. ROUTE 7**  
**ST. ALBANS CITY STA. 0+000.00 = MM 0.000**  
**ST. ALBANS TOWN - ST. ALBANS CITY TOWN LINE**



⊕ CORE LOCATION

PAVEMENT CORE DATA			
CORE #	LOCATION	DEPTH (mm)	PCC
1	0+045.1, RT.	140	NO
2	0+048.3, RT.	159	NO

- \* MATCH EXISTING CONDITIONS
- NOTES: 1) ALL DIMENSIONS IN MILLIMETERS EXCEPT WHERE OTHERWISE INDICATED.  
 2) ALL EXISTING SIGNS NOT SHOWN SHALL BE RETAINED AS DIRECTED BY THE RESIDENT ENGINEER.  
 3) FOR ANY TOWN HIGHWAY OR STREET DETAILS, SEE VTrans STANDARD E-193M.

<b>LAYOUT SHEET #1</b>	PROJECT NAME: <u>ST. ALBANS CITY</u>	PLOT DATE: 01-FEB-2006 07:4
	PROJECT NUMBER: <u>STP_9804(1)S</u>	DRAWN BY: <u>D-H</u>
	FILE NAME: <u>zpxve297d150zpd150.dgn</u>	CHECKED BY:
	DESIGNED BY: <u>D-H</u>	SHEET <u>19</u> OF <u>105</u>

