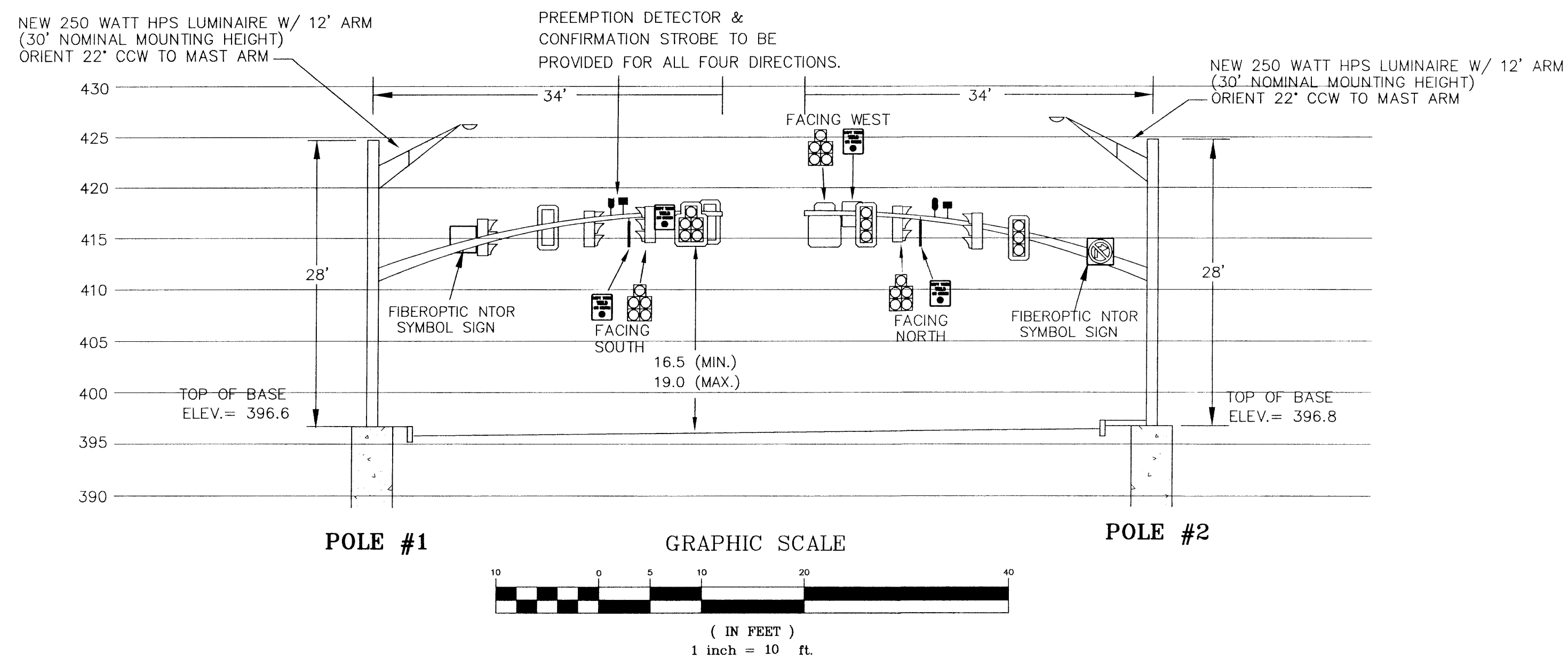


**WESTBOUND VIEW - CROSS SECTION**



**TRAFFIC CONTROL NOTES**

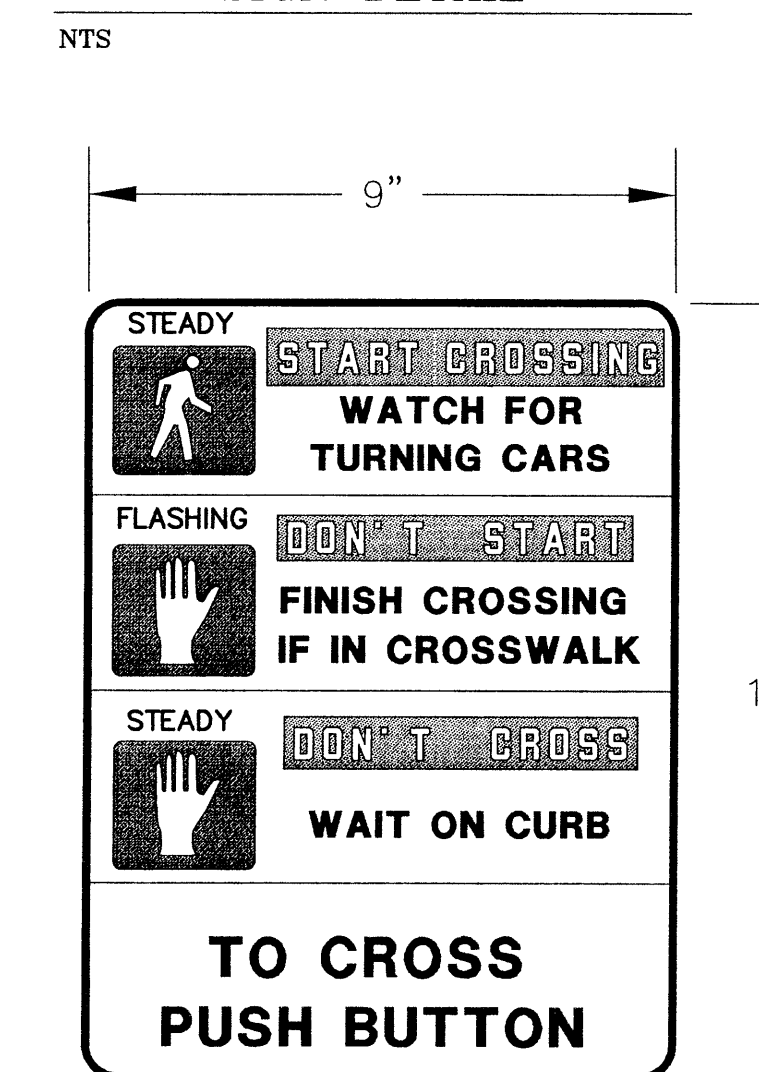
1. FOR ANY WORK WITHIN THE HIGHWAY RIGHT-OF-WAY A MINIMUM OF TWO-WAY THRU TRAFFIC SHALL BE MAINTAINED AT ALL TIMES. CONTINUOUS TWO-WAY TRAFFIC SHALL BE MAINTAINED AT NIGHT, ON WEEKENDS AND HOLIDAYS, DURING PEAK TRAFFIC AND WHENEVER POSSIBLE DURING CONSTRUCTION. AN UNIFORMED TRAFFIC CONTROL OFFICER SHALL DIRECT TRAFFIC WHENEVER A LANE CLOSURE IS REQUIRED AND DURING PEAK HOURS WHEN DEEMED NECESSARY BY THE TOWN OR STATE.
2. TRAFFIC CONTROL SIGNING AND CHANNELIZING DEVICES SHALL BE IN ACCORDANCE WITH THE APPROPRIATE VAOT STANDARD DETAILS (E-100 THRU E-110, E-10, OTHERS AS REQUIRED).
3. APPROACH CONSTRUCTION SIGNING SHALL REMAIN IN PLACE DURING THE ENTIRE CONSTRUCTION PERIOD. OTHER SIGNING SHALL BE REMOVED OR COVERED WHEN NOT APPLICABLE.
4. VARIATIONS IN THE SIGNING PACKAGES MAY BE DICTATED BY UNIQUE GEOMETRY AND/OR TRAFFIC CONDITIONS.
5. THE CONTRACTOR SHALL NOT WORK WITHIN THE HIGHWAY ROW WITHOUT THE APPROPRIATE CONSTRUCTION SIGNING AND TRAFFIC CONTROL DEVICES IN PLACE.
6. TO FACILITATE THE FLOW OF TRAFFIC, THE TOWN AND STATE SHALL HAVE AUTHORITY TO MODIFY THE CONTRACTOR'S ONGOING OPERATIONS OR PROPOSED METHODS OF CONSTRUCTION IN AND/OR NEAR THE INTERSECTION AS IS DEEMED NECESSARY FOR THE SAFETY, CONVENIENCE AND WELFARE OF THE TRAVELING PUBLIC. THE CONTRACTOR SHALL COMPLY WITH THE TOWN AND/OR STATE'S DIRECTIVES CONCERNING THIS MATTER.

**LIST OF MAJOR EQUIPMENT - ITEM 678.15**

EQUIPMENT	QUANTITY
STEEL CANTILEVER POLE/MAST ARM ASSEMBLY	2
STEEL PEDESTAL POLE	10
PEDESTRIAN SIGNAL HEADS	12
LUMINAIRE (12' ARM)	2
GROUND MOUNTED CONTROLLER CABINET (INCL. SYSTEM MASTER & LOCAL SIGNAL CONTROLLERS)	1
12" POLYCARBONATE TRAFFIC SIGNAL HEADS WITH TUNNEL VISORS AND MOUNTING HARDWARE	
3-SECTION HEAD	9
5-SECTION HEAD	4
FIBEROPTIC NO RIGHT TURN ON RED SIGNS (24" x 24")	4
FIRE PREEMPTION DETECTORS	4
CONFIRMATION STROBES	4
PEDESTRIAN PUSH BUTTON ASSEMBLY	10
LEFT TURN YIELD ON GREEN SIGN	4

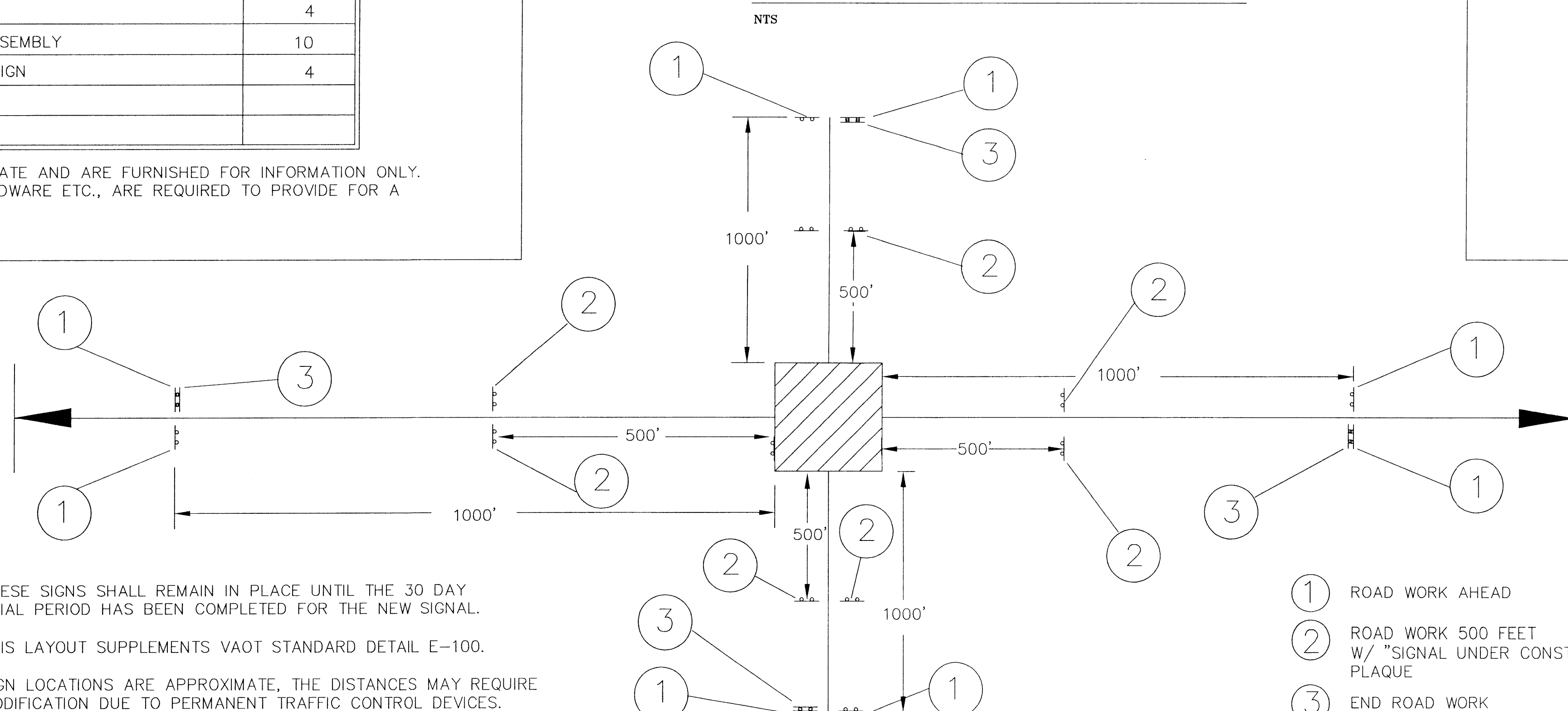
THE QUANTITIES LISTED ABOVE ARE APPROXIMATE AND ARE FURNISHED FOR INFORMATION ONLY. MISCELLANEOUS (UNLISTED) WIRE, CABLE, HARDWARE ETC., ARE REQUIRED TO PROVIDE FOR A FUNCTIONING TRAFFIC SIGNAL SYSTEM.

**PEDESTRIAN INSTRUCTION SIGN DETAIL**



PEDESTRIAN INSTRUCTION SIGN SHOWN ABOVE TO REPLACE SIGN SHOWN ON STD. DETAIL E-170

**CONSTRUCTION APPROACH SIGNING**



- 1.) THESE SIGNS SHALL REMAIN IN PLACE UNTIL THE 30 DAY TRIAL PERIOD HAS BEEN COMPLETED FOR THE NEW SIGNAL.
- 2.) THIS LAYOUT SUPPLEMENTS VAOT STANDARD DETAIL E-100.
- 3.) SIGN LOCATIONS ARE APPROXIMATE, THE DISTANCES MAY REQUIRE MODIFICATION DUE TO PERMANENT TRAFFIC CONTROL DEVICES.

- 1 ROAD WORK AHEAD
- 2 ROAD WORK 500 FEET W/ "SIGNAL UNDER CONSTRUCTION" PLAQUE
- 3 END ROAD WORK

**CONTRACT PLANS**

VERMONT AGENCY OF TRANSPORTATION  
 WILLISTON NHG 5500 (10)S "TAFT CORNERS"  
 (US ROUTE 2 / VT ROUTE 2A)  
 WILLISTON VERMONT  
**MAST ARM DESIGN CROSS-SECTIONS & MISC. NOTES**  
 design RJD/JLC  
 drawn JLC  
 checked RJD  
 scale AS NOTED  
 sht. no. 32  
**LAMOUREUX & DICKINSON Consulting Engineers Inc.**  
 14 Morse Drive  
 Essex Junction, VT 05452  
 (802) 878-4450  
 Engineers-Planners-Surveyors