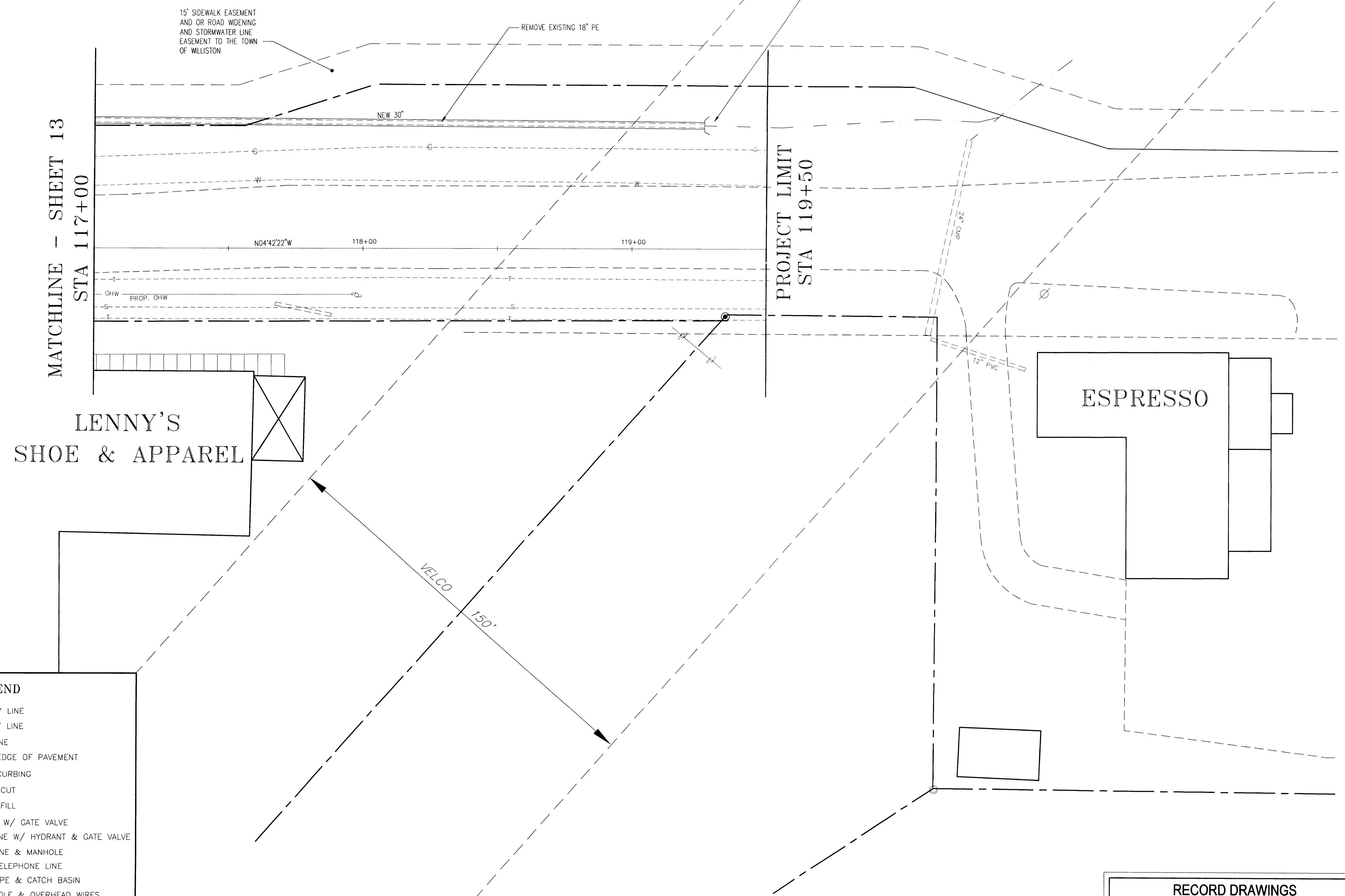


THE CONTRACTOR SHALL NOTIFY "DIGSAFE" AT 1-888-DIG-SAFE PRIOR TO ANY EXCAVATION.

MATCHLINE - SHEET 13
STA 117+00

PROJECT LIMIT
STA 119+50



LENNY'S
SHOE & APPAREL

ESPRESSO

VELCO
150'

NEW END SECTION
DAYLIGHT ELEV. = 374.11'

15' SIDEWALK EASEMENT
AND OR ROAD WIDENING
AND STORMWATER LINE
EASEMENT TO THE TOWN
OF WILLISTON

REMOVE EXISTING 18" PE

NEW 30"

N04°42'22"W

118+00

119+00

OHW

PROP. OHW

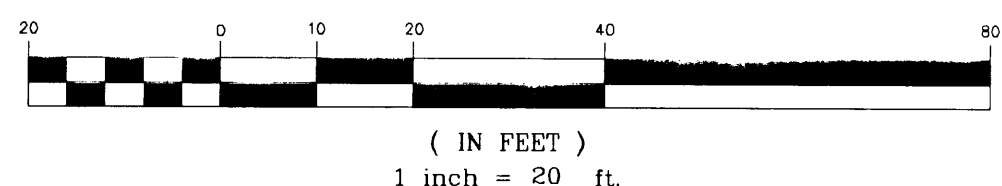
24" CPVC

12" PVC

LEGEND

- PROPERTY LINE
- EASEMENT LINE
- SWALE LINE
- EXISTING EDGE OF PAVEMENT
- EXISTING CURBING
- LIMIT OF CUT
- LIMIT OF FILL
- GAS LINE W/ GATE VALVE
- WATER LINE W/ HYDRANT & GATE VALVE
- SEWER LINE & MANHOLE
- BURIED TELEPHONE LINE
- STORM PIPE & CATCH BASIN
- UTILITY POLE & OVERHEAD WIRES
- TREES
- LIGHT POLE
- SIGN POST
- CONCRETE MONUMENT FOUND
- IRON PIPE FOUND

GRAPHIC SCALE



CONTRACT PLANS

VERMONT AGENCY OF
TRANSPORTATION

WILLISTON NHG 5500 (10)S
"TAFT CORNERS"
(US ROUTE 2 & VT ROUTE 2A)

WILLISTON

VERMONT

HORIZONTAL LAYOUT &
CONSTRUCTION PLANS

LAMOUREUX & DICKINSON
Consulting Engineers Inc.

14 Morse Drive
Essex Junction, VT 05452
(802) 878-4450

Engineers-Planners-Surveyors

design	RJD
drawn	JLC
checked	RJD
scale	1"=20'
shet. no.	14

RECORD DRAWINGS
THIS RECORD DRAWING HAS BEEN PREPARED BY GRIFFIN INTERNATIONAL, INC. BASED ON BASE PLAN DESIGN DRAWINGS PROVIDED BY LAMOUREUX & DICKINSON, INC.. CHANGES MADE TO THE DESIGN PLANS ARE INDICATED. THE INFORMATION PROVIDED REGARDING ANY DEVIATION FROM THE DESIGN PLANS ARE BASED ON RESIDENT ENGINEER NOTES AND MEASUREMENT OF ABOVEGROUND FEATURES.

DATE PLOTTED: 08/20/2018 10:00:00 AM