

THE CONTRACTOR SHALL NOTIFY "DIGSAFE" AT 1-888-DIG-SAFE PRIOR TO ANY EXCAVATION.

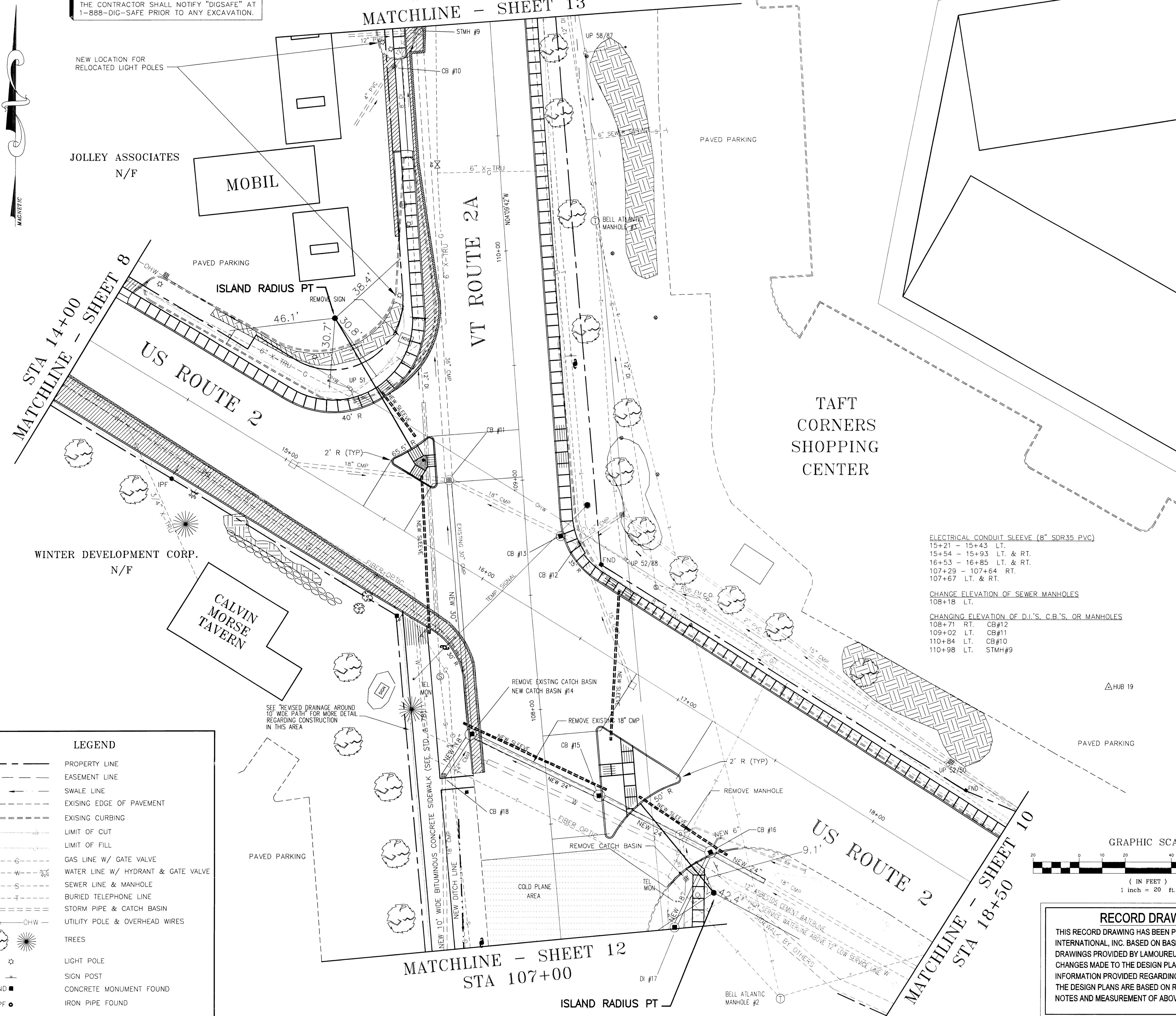
STA 111+00
MATCHLINE - SHEET 13

- NOTES:
- 1) NEW CONDUIT SLEEVES SHALL BE INSTALLED IN SAME TRENCH AS NEW STORM WHERE POSSIBLE.
 - 2) WHEN BACKFILLING TRENCH CROSSINGS OF ROUTES 2 AND 2A, THE CONTRACTOR SHALL UTILIZE FLOWABLE FILL UP TO 2" ABOVE THE TOP OF THE SLEEVE TO PREVENT FUTURE SETTLING IN TRENCHES.
 - 3) FLOWABLE FILL SHALL BE CONTROLLED LOW STRENGTH MATERIAL (CLSM) MANUFACTURED USING A QUICK SETTING CEMENT, FLYASH, SAND AND WATER MIXTURE, HAVING LOW OR NO ENTRAINED AIR CONTENT AND HAVING A MAXIMUM COMPRESSIVE STRENGTH OF 75 PSI (HAND REMOVABLE).
 - 4) STA. 10+00 - STA. 15+75 ROADWAY WIDENING MAY INVOLVE EXCAVATION AROUND EXISTING FIBER OPTIC CABLE AND/OR VT GAS MAIN. CONTRACTOR SHALL UTILIZE HAND DIGGING AND PROTECTION IF DEEMED NECESSARY BY RESIDENT ENGINEER & BELL ATLANTIC / VT GAS.

- CONSTRUCT DRIVES**
110+67 LT.
- BITUMINOUS CONCRETE SIDEWALK**
107+00 - 108+44 LT. (10' WIDE)
107+71.5 - 107+71.5, 31' - 46' LT. (5' WIDE)
- PORTLAND CEMENT CONCRETE SIDEWALK (5" THICK)**
14+05 - 110+43 LT.
110+91 - 111+00 LT.
107+53 - 107+83 RT.
107+00 - 107+27 RT.
18+50 - 111+00 RT.
15+39 - 15+54 LT.
- PORTLAND CEMENT CONCRETE SIDEWALK (8" THICK)**
14+00 - 14+05 LT.
110+43 - 110+91 LT.
- CAST-IN-PLACE CEMENT CONCRETE CURB, TYPE B**
14+05 - 110+47 LT.
14+05 - 14+07 LT. (MOBIL MINI MART)
14+00 RT. - 107+75 LT.
110+87 - 111+00 LT.
111+00 RT. - 18+50 LT.
110+20 - 110+47 LT. (MOBIL MINI MART)
107+18 - 17+57 RT.
- GRANITE SLOPE EDGING**
15+32 - 15+62 LT.
107+41 - 107+90 RT.
- REMOVAL OF EXISTING CURB**
108+09 - 108+38 LT.
109+61 RT. - 18+50 LT.
14+08 - 110+44 LT.
110+30 - 110+44 LT.
110+87 - 110+95 LT.
- SIDEWALK RAMPS**
15+22 LT (TYPE 6)
15+39 LT (TYPE 1)
15+48 LT (TYPE 1)
15+84 RT (TYPE 1)
16+90 LT (TYPE 6)
16+90 RT (TYPE 1)
- CHANGING ELEVATION OF D.I.'S, C.B.'S, OR MANHOLES**
107+27 RT (TYPE 1)
107+53 RT (TYPE 1)
107+71 RT (TYPE 1)
109+15 LT (TYPE 1)
109+15 RT (TYPE 6)
- REMOVE SMALL TREE**
108+05 LT.
15+61 RT.
- ADJUST ELEVATION OF VALVE BOX**
14+74 RT.
110-40 LT.
- REMOVE AND RESETTING LIGHT POLE**
110+15 LT.
110+92 LT.

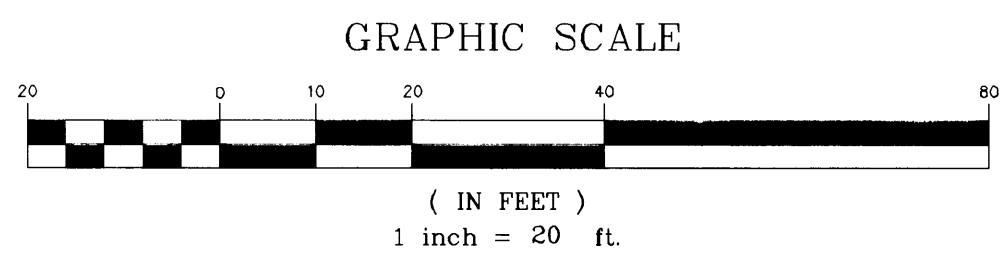
- ELECTRICAL CONDUIT SLEEVE (6" SDR35 PVC)**
15+21 - 15+43 LT.
15+54 - 15+93 LT. & RT.
16+53 - 16+85 LT. & RT.
107+29 - 107+64 RT.
107+67 LT. & RT.
- CHANGE ELEVATION OF SEWER MANHOLES**
108+18 LT.

- CHANGING ELEVATION OF D.I.'S, C.B.'S, OR MANHOLES**
108+71 RT. CB#12
109+02 LT. CB#11
110+84 LT. CB#10
110+98 LT. STM#9



LEGEND

	PROPERTY LINE
	EASEMENT LINE
	SWALE LINE
	EXISTING EDGE OF PAVEMENT
	EXISTING CURBING
	LIMIT OF CUT
	LIMIT OF FILL
	GAS LINE W/ GATE VALVE
	WATER LINE W/ HYDRANT & GATE VALVE
	SEWER LINE & MANHOLE
	BURIED TELEPHONE LINE
	STORM PIPE & CATCH BASIN
	UTILITY POLE & OVERHEAD WIRES
	TREES
	LIGHT POLE
	SIGN POST
	CONCRETE MONUMENT FOUND
	IRON PIPE FOUND



RECORD DRAWINGS
THIS RECORD DRAWING HAS BEEN PREPARED BY GRIFFIN INTERNATIONAL, INC. BASED ON BASE PLAN DESIGN DRAWINGS PROVIDED BY LAMOUREUX & DICKINSON, INC.. CHANGES MADE TO THE DESIGN PLANS ARE INDICATED. THE INFORMATION PROVIDED REGARDING ANY DEVIATION FROM THE DESIGN PLANS ARE BASED ON RESIDENT ENGINEER NOTES AND MEASUREMENT OF ABOVEGROUND FEATURES.

CONTRACT PLANS

VERMONT AGENCY OF TRANSPORTATION

WILLISTON NHG 5500 (10S)
"TAFT CORNERS"
(US ROUTE 2 & VT ROUTE 2A)

WILLISTON VERMONT

HORIZONTAL LAYOUT & CONSTRUCTION PLANS

LAMOUREUX & DICKINSON Consulting Engineers Inc.
14 Morse Drive
Essex Junction, VT 05452
(802) 878-4450
Engineers-Planners-Surveyors

design RJD
drawn JLC
checked RJD
scale 1"=20'
sht. no. 9