

CB 9      PIPE 9      CB 8      PIPE 8  
 175+61.8 RT    175+61.8 - 174+86 RT    174+86 RT    174+86 - 174+25 RT  
 4.83 DIA      18" CPEP      4.83 DIA      18" CPEP

SPH  
2-20-14

SUMMARY

TRENCH EX ITEM 204.20

- ① CB#9 : 141.19 cy
- ② CB#8 : 141.94 cy
- ③ OLD PIPE : 2.41 cy
- ④ PIPE #9 : 50.52 cy
- ⑤ PIPE #8 : 39.05 cy

---

TOTAL TRENCH EX : 277.11

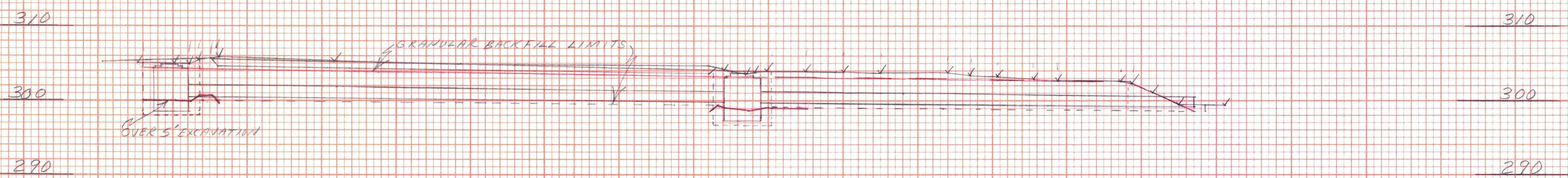
TOTAL TRENCH EX : 277.11

TOTAL TRENCH EX : 277.11

TOTAL TRENCH EX : 277.11

TOTAL TRENCH EX : 277.11

TOTAL TRENCH EX : 277.11



T.E. 44705' CB 9  $(5 \times 15) \times 2(1.4) + (5.15) \times 2(2) + (3 \times 4.5) \times 2(1.2) + (4.5 \times 4.2) \times 2(6.6) + (4.2 \times 4.8) \times 2(6) + (4.5) = 1357.88 \text{ CF}$

OVER 5'  $(0.18 \times 0.2) \times 2(1.4) + (0.5 \times 0.1) \times 2(2) + (4.5) \times (1.5) = 6.08 \text{ CF}$

TOTAL T.E. PIPE #9 =  $(1357.88 + 6.08) \times (1.21) = 1658.22 \text{ CY}$

T.E. 44705' CB 8  $(5 \times 15) \times 2(1.4) + (5.15) \times 2(2) + (3 \times 4.5) \times 2(1.2) + (4.5 \times 4.2) \times 2(6.6) + (4.2 \times 4.8) \times 2(6) + (4.5) = 1357.88 \text{ CF}$

OVER 5'  $(0.18 \times 0.2) \times 2(1.4) + (0.5 \times 0.1) \times 2(2) + (4.5) \times (1.5) = 6.08 \text{ CF}$

TOTAL T.E. PIPE #8 =  $(1357.88 + 6.08) \times (1.21) = 1658.22 \text{ CY}$

II 175+50.83 RT - 174+83.91 RT  
 EXISTING 15" X 75' CMP (REMOVE)

PIPE #8 GRANULAR BACKFILL FOR STRUCTURES  $(17.8 \times 4) + 4 \times 9 \times 2(4.5) = 941.4 \text{ CF}$  MINUS PIPE  $(17.8 \times 6) \times (1.75) \times (8.14) = 95.02 \text{ CF}$

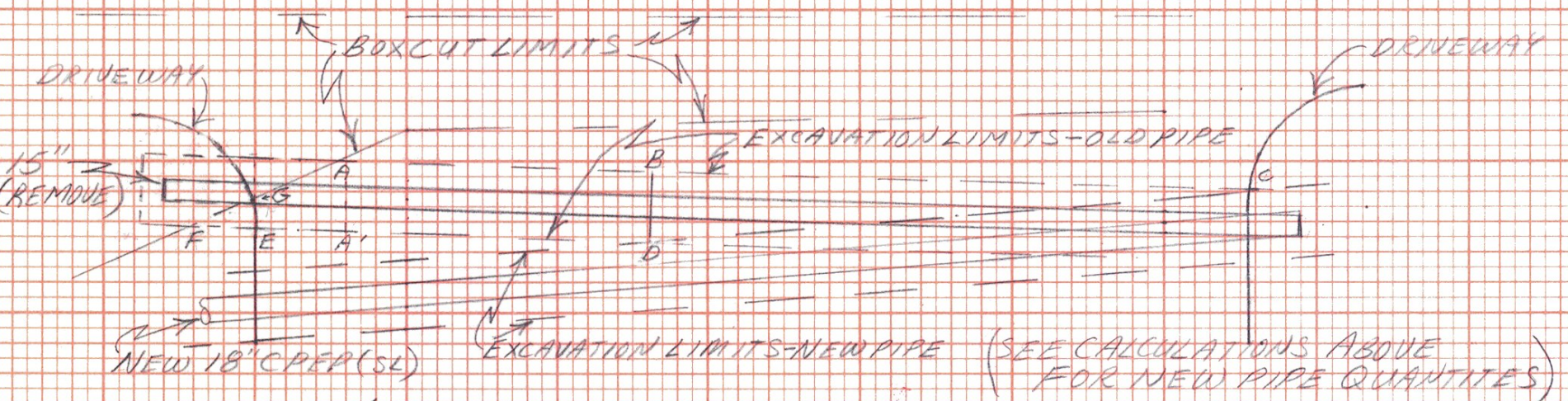
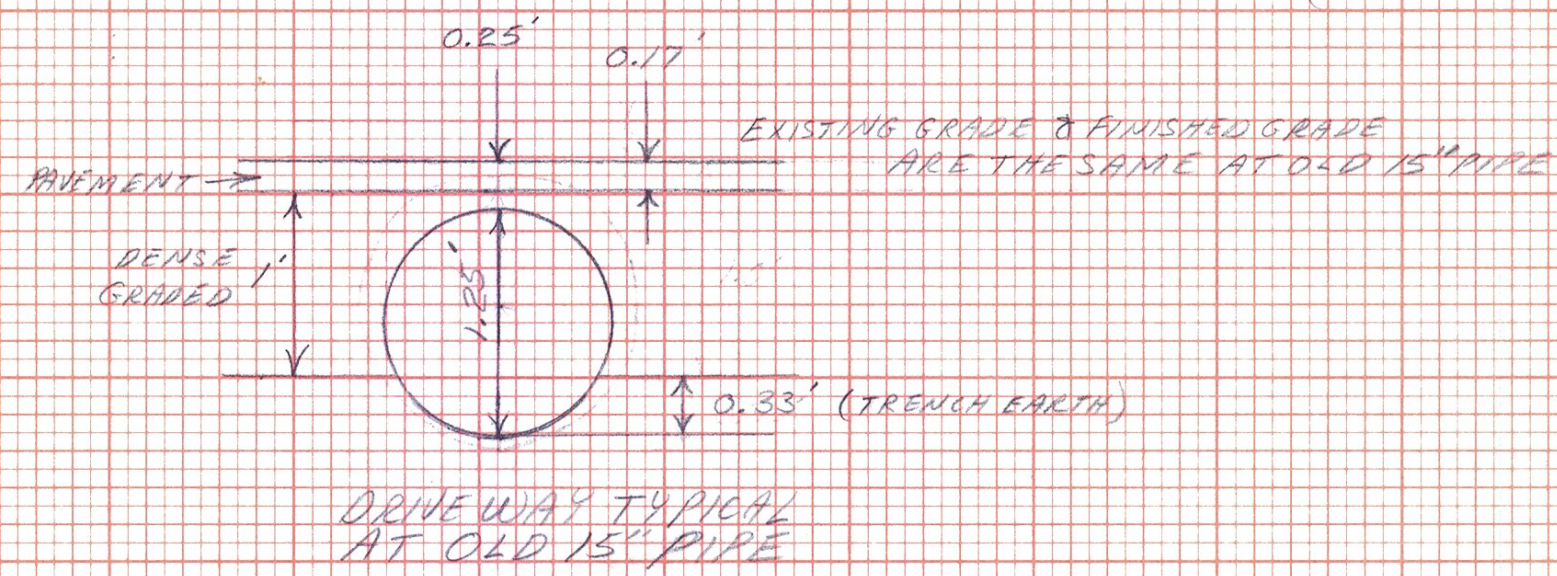
$(941.4 - 95.02) \times (1.21) = 1088.35 \text{ CY}$

PIPE #9 GRANULAR BACKFILL FOR STRUCTURES  $(10.4 \times 4) \times (4.5) = 187.2 \text{ CF}$  MINUS PIPE  $(10.4 \times 1.75) \times (3.14) = 117.69 \text{ CF}$

$(187.2 - 117.69) \times (1.21) = 84.83 \text{ CY}$

CB #8 & 9 GRANULAR BACKFILL FOR STRUCTURES  $(6.4) \times (3.92) \times (8.14) = 308.80 \text{ CF}$  MINUS CB  $(6.4) \times (2.42) \times (8.14) = 117.69 \text{ CF}$

$(308.80 - 117.69) \times (1.21) = 232.11 \text{ CY}$



NOTE: OLD 15" PIPE HAD 0.25' OF COVER FOR ENTIRE LENGTH

AREA F-G-E-F  $(4.2 \times 2.0 \times 1.3) \times 2 = 6.3 \text{ CF}$   
 A-B-D-A-A  $(20.0 \times 4.5 \times 0.33) = 29.7 \text{ CF}$   
 A-A'-E-G-A  $(4.5 \times 2.0) \times 2(6) \times (0.33) = 6.4 \text{ CF}$   
 B-C-D-B  $(9.8 \times 4.5 \times 0.33) \times 2 = 29.6 \text{ CF}$   
 TOTAL = 72.0 CF

DEDUCT PIPE  $45' \times (11 \times 0.33) \times 2 = 8.2 \text{ CF}$

$(72.0 - 8.2) \times 1.21 = 82.4 \text{ T.E.}$

H.W. Norton  
 6/2013  
 9/2013  
 9/13/2013

ESSEX TOWN SFP 5400 (5)  
 DRAINAGE SHEET 1

ESSEX TOWN SFP 5400 (12)  
 REVISION SHEET 1