

646.406 - DURABLE 4" WHITE LINE, RECESSED POLYUREA
 STA 171+50.00 LT - 202+50.00 LT (SOL ID)
 STA 171+50.00 RT - 173+00.00 RT (SOL ID)
 STA 171+50.00 RT - 176+25.00 RT (SOL ID)
 STA 200+34.00 LT - 201+50.00 LT (SOL ID)
 STA 201+50.00 LT - 202+50.00 LT (DOTTED)
 STA 202+50.00 RT - 176+25.00 LT (SOL ID)

646.416 - DURABLE 4" YELLOW LINE, RECESSED POLYUREA
 STA 171+50.00 LT - 173+00.00 LT (SOL ID-DOUBLE)
 STA 200+34.00 RT - 202+50.00 LT (SOL ID-DOUBLE)
 STA 173+69.50 LT - 175+75.00 LT (SOL ID-DOUBLE)
 STA 173+69.50 RT - 175+75.00 RT (SOL ID-DOUBLE)
 STA 175+75.00 LT - 176+25.00 LT (SOL ID-DOUBLE)

646.456 - DURABLE 8" YELLOW LINE, RECESSED POLYUREA
 STA 173+75.00 LT - 173+85.71 RT (SOL ID-DIAGONAL)
 STA 173+89.54 LT - 173+99.47 RT (SOL ID-DIAGONAL)
 STA 174+04.08 LT - 174+13.23 RT (SOL ID-DIAGONAL)
 STA 174+18.63 LT - 174+27.00 RT (SOL ID-DIAGONAL)
 STA 174+33.17 LT - 174+40.76 RT (SOL ID-DIAGONAL)
 STA 174+47.71 LT - 174+54.52 RT (SOL ID-DIAGONAL)
 STA 174+62.25 LT - 174+68.29 RT (SOL ID-DIAGONAL)
 STA 174+76.79 LT - 174+82.05 RT (SOL ID-DIAGONAL)
 STA 174+91.34 LT - 174+95.81 RT (SOL ID-DIAGONAL)
 STA 175+05.88 LT - 175+09.58 RT (SOL ID-DIAGONAL)
 STA 175+20.42 LT - 175+23.34 RT (SOL ID-DIAGONAL)
 STA 175+34.96 LT - 175+37.11 RT (SOL ID-DIAGONAL)

646.600 - TEMPORARY 4" WHITE LINE
 STA 171+50.00 LT - 202+50.00 LT (SOL ID)
 STA 171+50.00 RT - 173+00.00 RT (SOL ID)
 STA 171+50.00 RT - 176+25.00 RT (SOL ID)
 STA 200+34.00 LT - 201+50.00 LT (SOL ID)
 STA 201+50.00 LT - 202+50.00 LT (DOTTED)
 STA 202+50.00 RT - 176+25.00 LT (SOL ID)

646.610 - TEMPORARY 4" YELLOW LINE
 STA 171+50.00 LT - 173+00.00 LT (SOL ID-DOUBLE)
 STA 200+34.00 RT - 202+50.00 LT (SOL ID-DOUBLE)
 STA 173+69.50 LT - 175+75.00 LT (SOL ID-DOUBLE)
 STA 173+69.50 RT - 175+75.00 RT (SOL ID-DOUBLE)
 STA 175+75.00 LT - 176+25.00 LT (SOL ID-DOUBLE)

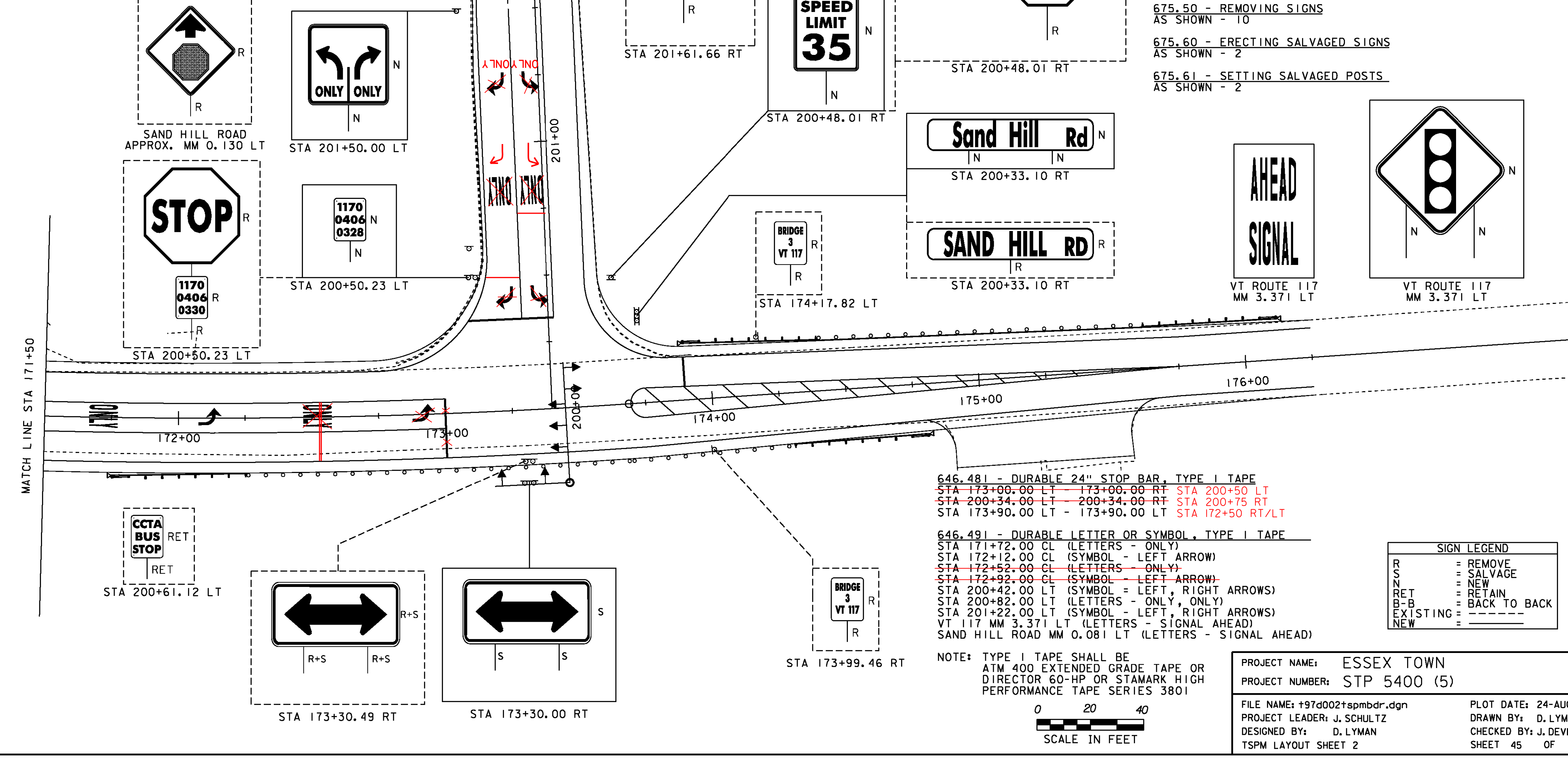
646.680 - TEMPORARY 24" STOP BAR
 STA 173+00.00 LT - 173+00.00 RT
 STA 200+34.00 LT - 200+34.00 RT
 STA 173+90.00 LT - 173+90.00 LT

646.690 - TEMPORARY LETTER OR SYMBOL
 STA 171+72.00 CL (LETTERS - ONLY)
 STA 172+12.00 CL (SYMBOL - LEFT ARROW)
 STA 172+52.00 CL (LETTERS - ONLY)
 STA 172+92.00 CL (SYMBOL - LEFT ARROW)
 STA 200+42.00 LT (SYMBOL = LEFT, RIGHT ARROWS)
 STA 200+82.00 LT (LETTERS - ONLY, ONLY)
 STA 201+22.00 LT (SYMBOL - LEFT, RIGHT ARROWS)

675.50 - REMOVING SIGNS
 AS SHOWN - 10

675.60 - ERECTING SALVAGED SIGNS
 AS SHOWN - 2

675.61 - SETTING SALVAGED POSTS
 AS SHOWN - 2

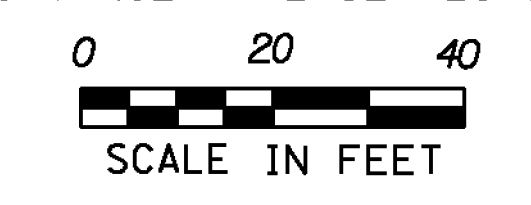


646.481 - DURABLE 24" STOP BAR, TYPE I TAPE
~~STA 173+00.00 LT - 173+00.00 RT~~ STA 200+50 LT
~~STA 200+34.00 LT - 200+34.00 RT~~ STA 200+75 RT
~~STA 173+90.00 LT - 173+90.00 LT~~ STA 172+50 RT/LT

646.491 - DURABLE LETTER OR SYMBOL, TYPE I TAPE
 STA 171+72.00 CL (LETTERS - ONLY)
 STA 172+12.00 CL (SYMBOL - LEFT ARROW)
~~STA 172+52.00 CL (LETTERS - ONLY)~~
~~STA 172+92.00 CL (SYMBOL - LEFT ARROW)~~
 STA 200+42.00 LT (SYMBOL = LEFT, RIGHT ARROWS)
 STA 200+82.00 LT (LETTERS - ONLY, ONLY)
 STA 201+22.00 LT (SYMBOL - LEFT, RIGHT ARROWS)
 VT 117 MM 3.371 LT (LETTERS - SIGNAL AHEAD)
 SAND HILL ROAD MM 0.081 LT (LETTERS - SIGNAL AHEAD)

SIGN LEGEND	
R	= REMOVE
S	= SALVAGE
N	= NEW
RET	= RETAIN
B-B	= BACK TO BACK
EXISTING	= -----
NEW	= _____

NOTE: TYPE I TAPE SHALL BE ATM 400 EXTENDED GRADE TAPE OR DIRECTOR 60-HP OR STAMARK HIGH PERFORMANCE TAPE SERIES 3801



PROJECT NAME: ESSEX TOWN
 PROJECT NUMBER: STP 5400 (5)
 FILE NAME: +97d002+spmbdr.dgn
 PROJECT LEADER: J. SCHULTZ
 DESIGNED BY: D. LYMAN
 TSPM LAYOUT SHEET 2
 PLOT DATE: 24-AUG-2012
 DRAWN BY: D. LYMAN
 CHECKED BY: J. DEVLIN
 SHEET 45 OF 64