

646.406 - DURABLE 4" WHITE LINE, RECESSED POLYUREA
 STA 166+75.00 LT - 171+50.00 LT (SOLID)
 STA 166+75.00 RT - 171+50.00 RT (SOLID)
 STA 169+00.00 RT - 171+00.00 RT (DOTTED)
 STA 171+00.00 RT - 171+50.00 RT (SOLID)

646.416 - DURABLE 4" YELLOW LINE, RECESSED POLYUREA
 STA 166+75.00 LT - 167+50.00 LT (SOLID-DOUBLE)
 STA 167+50.00 LT - 171+50.00 LT (SOLID-DOUBLE)
 STA 167+50.00 RT - 171+00.00 LT (SOLID-DOUBLE)

646.491 - DURABLE LETTER OR SYMBOL, TYPE I TAPE
 STA 168+75.00 RT (LETTERS - SIGNAL AHEAD)
 STA 171+32.00 CL (SYMBOL - LEFT ARROW)

NOTE: TYPE I TAPE SHALL BE
 ATM 400 EXTENDED GRADE TAPE OR
 DIRECTOR 60-HP OR STAMARK HIGH
 PERFORMANCE TAPE SERIES 3801

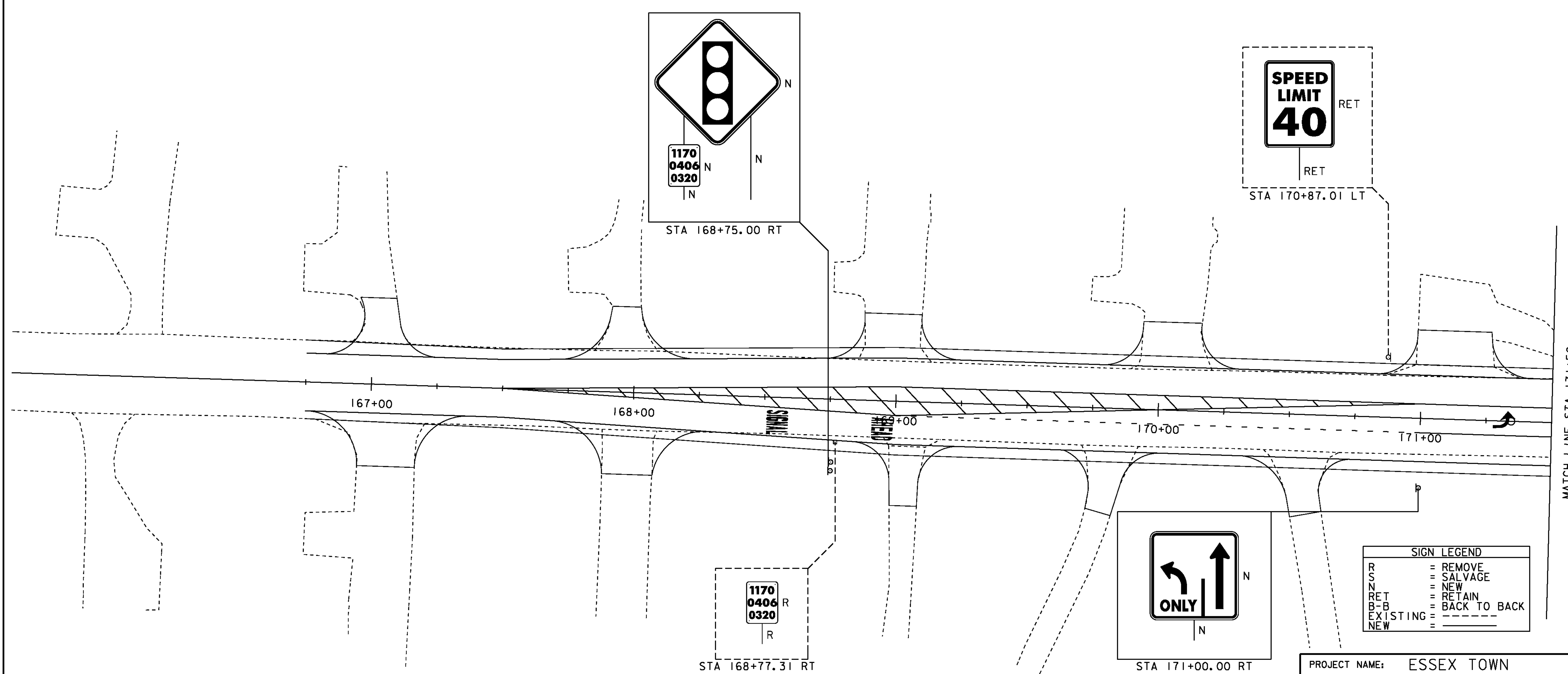
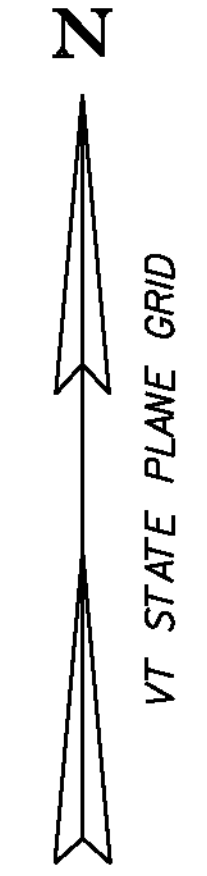
646.456 - DURABLE 8" YELLOW LINE, RECESSED POLYUREA
 STA 167+80.25 LT - 167+82.56 RT (SOLID-DIAGONAL)
 STA 167+93.90 LT - 167+97.24 RT (SOLID-DIAGONAL)
 STA 168+07.54 LT - 168+11.92 RT (SOLID-DIAGONAL)
 STA 168+21.18 LT - 168+26.60 RT (SOLID-DIAGONAL)
 STA 168+34.82 LT - 168+41.28 RT (SOLID-DIAGONAL)
 STA 168+48.46 LT - 168+55.96 RT (SOLID-DIAGONAL)
 STA 168+62.11 LT - 168+70.64 RT (SOLID-DIAGONAL)
 STA 168+75.75 LT - 168+85.32 RT (SOLID-DIAGONAL)
 STA 168+89.39 LT - 169+00.00 RT (SOLID-DIAGONAL)
 STA 169+03.14 LT - 169+13.40 RT (SOLID-DIAGONAL)
 STA 169+17.28 LT - 169+26.81 RT (SOLID-DIAGONAL)
 STA 169+31.43 LT - 169+40.21 RT (SOLID-DIAGONAL)
 STA 169+45.57 LT - 169+53.62 RT (SOLID-DIAGONAL)
 STA 169+59.71 LT - 169+67.02 RT (SOLID-DIAGONAL)
 STA 169+73.85 LT - 169+80.43 RT (SOLID-DIAGONAL)
 STA 169+87.99 LT - 169+93.83 RT (SOLID-DIAGONAL)
 STA 170+02.14 LT - 170+07.24 LT (SOLID-DIAGONAL)
 STA 170+16.28 LT - 170+20.64 LT (SOLID-DIAGONAL)
 STA 170+30.42 LT - 170+34.05 LT (SOLID-DIAGONAL)
 STA 170+44.56 LT - 170+47.45 LT (SOLID-DIAGONAL)
 STA 170+58.71 LT - 170+60.86 LT (SOLID-DIAGONAL)
 STA 170+72.85 LT - 170+74.26 LT (SOLID-DIAGONAL)

646.600 - TEMPORARY 4" WHITE LINE
 STA 166+75.00 LT - 171+50.00 LT (SOLID)
 STA 166+75.00 RT - 171+50.00 RT (SOLID)
 STA 169+00.00 RT - 171+00.00 RT (DOTTED)
 STA 171+00.00 RT - 171+50.00 RT (SOLID)

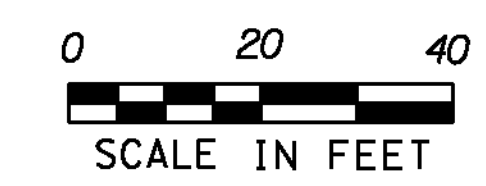
646.610 - TEMPORARY 4" YELLOW LINE
 STA 166+75.00 LT - 167+50.00 LT (SOLID-DOUBLE)
 STA 167+50.00 LT - 171+50.00 LT (SOLID-DOUBLE)
 STA 167+50.00 RT - 171+00.00 LT (SOLID-DOUBLE)

646.690 - TEMPORARY LETTER OR SYMBOL
 STA 168+75.00 RT (LETTERS - SIGNAL AHEAD)
 STA 171+32.00 CL (SYMBOL - LEFT ARROW)

675.50 - REMOVING SIGNS
 AS SHOWN - I



SIGN LEGEND	
R	= REMOVE
S	= SALVAGE
N	= NEW
RET	= RETAIN
B-B	= BACK TO BACK
EXISTING	=
NEW	=



PROJECT NAME: ESSEX TOWN
 PROJECT NUMBER: STP 5400 (5)
 FILE NAME: +97d002+spmbdr.dgn
 PROJECT LEADER: J. SCHULTZ
 DESIGNED BY: D. LYMAN
 TSPM LAYOUT SHEET I
 PLOT DATE: 24-AUG-2012
 DRAWN BY: D. LYMAN
 CHECKED BY: J. DEVLIN
 SHEET 44 OF 64