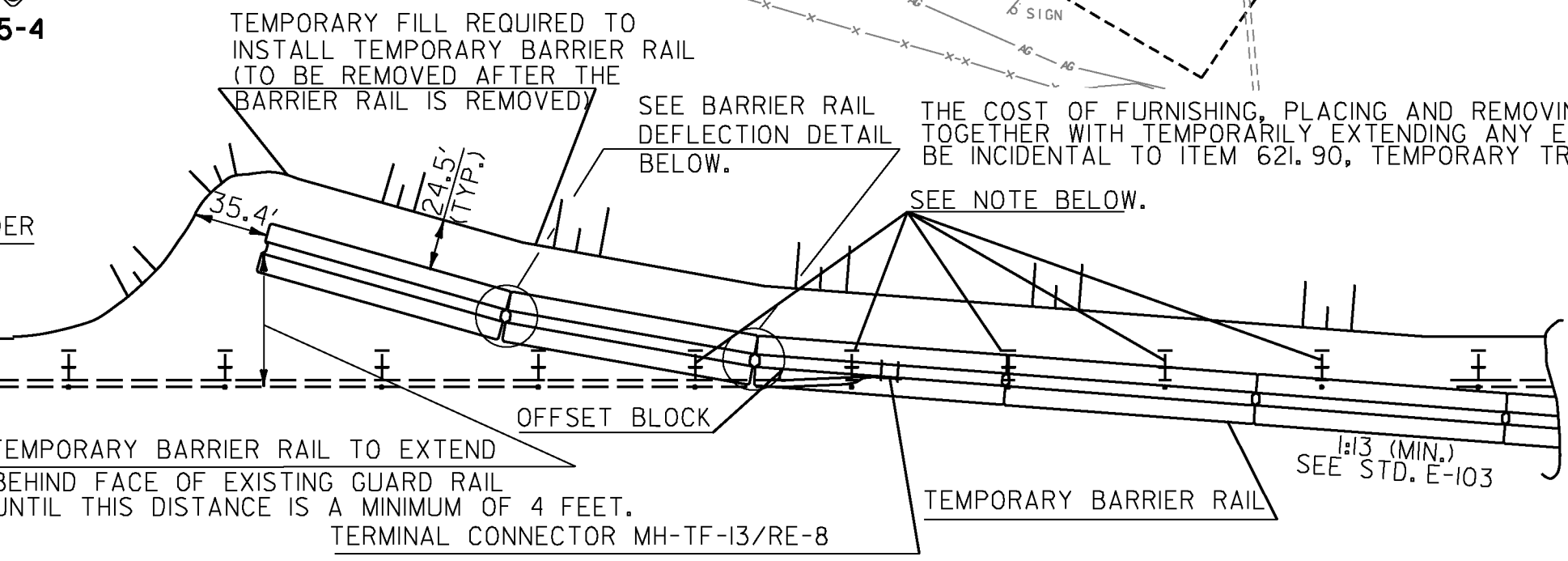
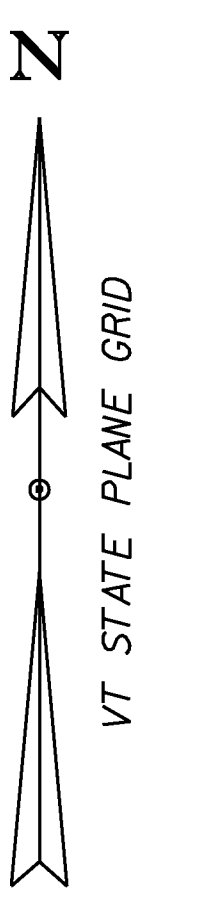
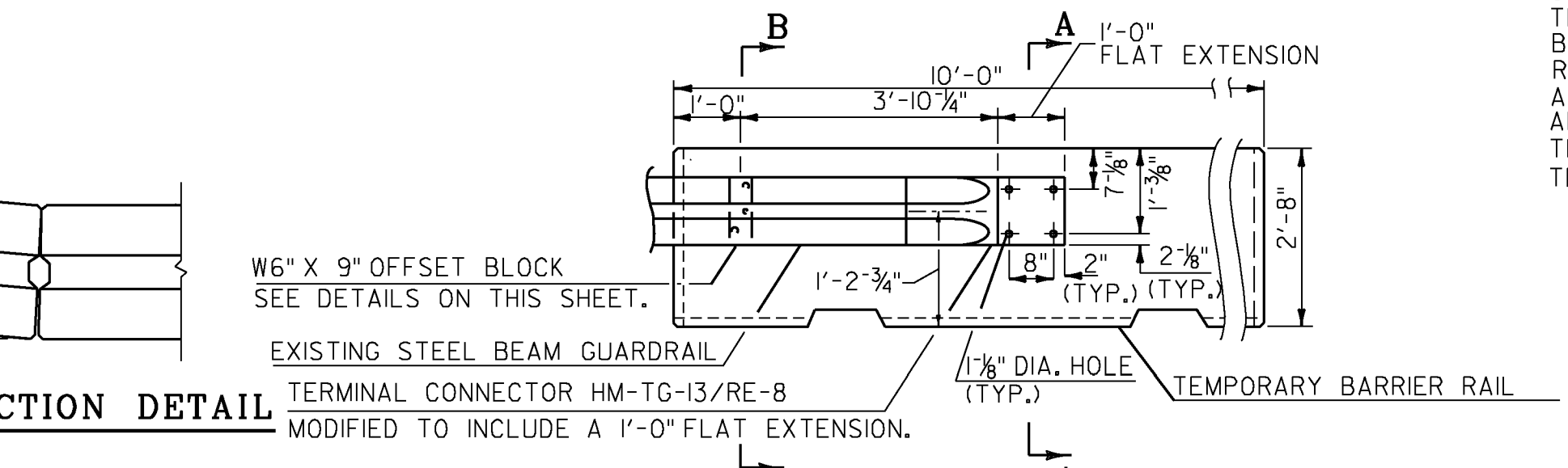


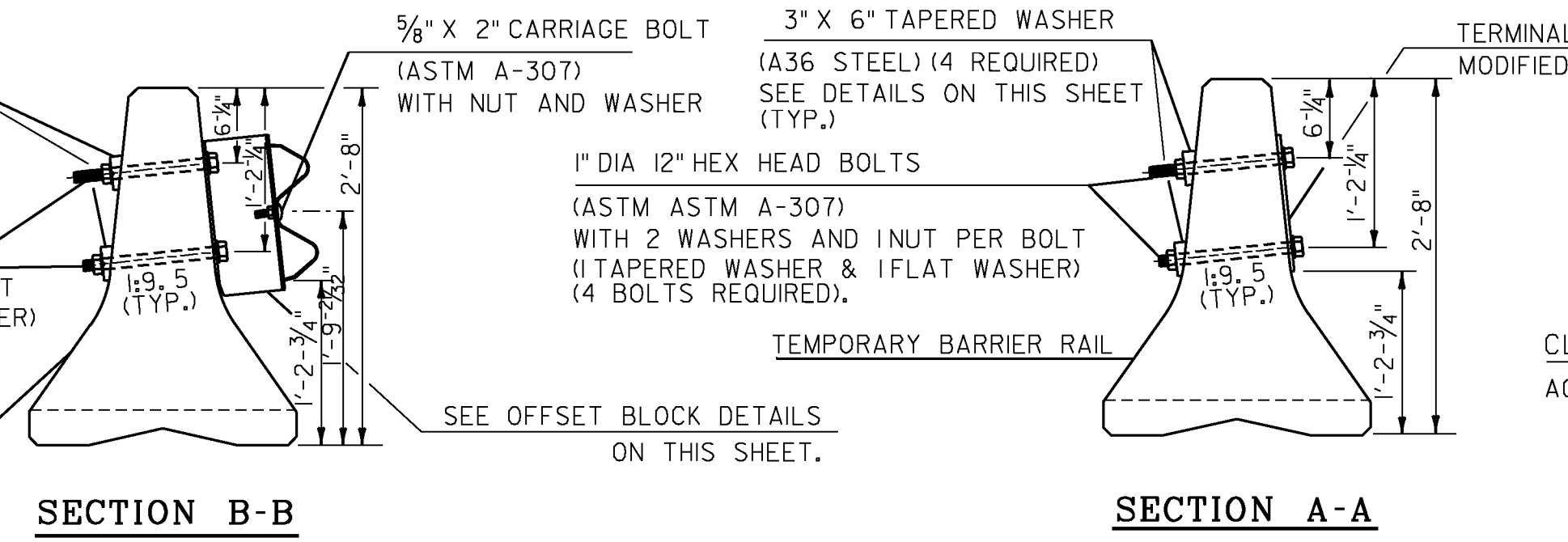
- LEGEND**
- WORK AREA
 - TEMPORARY TRAFFIC BARRIER
 - REFLECTORIZED PLASTIC DRUM
 - FLOW OF TRAFFIC
 - SIGN
 - IMPACT ATTENUATOR
 - DOUBLE YELLOW CENTER LINE
 - EL EDGE LINE
 - LL LANE LINE
- TEMPORARY 4 INCH WHITE LINE**
U.S. ROUTE 2 STA. 14+50 ~ 17+94 RT, 340 LF (EL)
- TEMPORARY 4 INCH YELLOW LINE**
U.S. ROUTE 2 STA. 14+50 ~ 17+36 LT, 286 X 2 = 572 LF (DYCL)
- TEMPORARY 6 INCH WHITE LINE**
I-89 SB OFF-RAMP (RAMP D) STA. 50+50 ~ 54+20 RT, 370 LF (LL)
I-89 SB OFF-RAMP (RAMP D) STA. 54+14 ~ 54+20 RT, 20 LF (EL)
- TEMPORARY 6 INCH YELLOW LINE**
I-89 SB OFF-RAMP (RAMP D) STA. 51+50 ~ 54+20 LT, 270 LF (EL)
- TEMPORARY 24 INCH STOP BAR**
I-89 SB OFF-RAMP (RAMP D) STA. 54+20 LT & RT, 45 LF
- VEHICLE TRACKING PAD**
U.S. ROUTE 2 STA. 16+00 RT
- ENERGY ABSORPTION ATTENUATOR**
U.S. ROUTE 2 STA. 14+68 RT, 1EA
I-89 SB OFF-RAMP (RAMP D) STA. 50+86 LT, 1EA
- REMOVAL OF EXISTING PAVEMENT MARKINGS**
U.S. ROUTE 2 STA. 14+50 ~ 17+36 LT & RT, 286 X 3 X 0.33 = 283 SF
I-89 SB OFF-RAMP (RAMP D) STA. 51+50 ~ 54+20 RT, 270 X 0.50 = 135 SF



PLAN VIEW SHOWING POSITIVE CONNECTION BETWEEN TEMPORARY BARRIER RAIL AND EXISTING GUARD RAIL



ELEVATION VIEW SHOWING POSITIVE CONNECTION BETWEEN TEMPORARY BARRIER RAIL AND EXISTING GUARD RAIL



PROJECT NAME: RICHMOND
PROJECT NUMBER: STP 0284 (17)

FILE NAME: z97cl86rdwaytmp.dgn
PROJECT LEADER: JEFFREY MAXTUTIS
DESIGNED BY: J.SOBEL
ROADWAY TMP PHASE 1 SHEET 2

PLOT DATE: 4/29/2013
DRAWN BY: Y.CAO/J.ALMY
CHECKED BY: D.FLYNN
SHEET 78 OF 133

