

WIRED CONDUIT (2") (PVC)

PNR 70+80 LT (JB) - 71+55 LT (JB) 77'
 PNR 71+55 LT (JB) - 72+30 LT (JB) 75'
 PNR 71+74 RT (JB) - 71+08 RT (JB) 73'
 PNR 72+26 RT (JB) - 72+27 RT (JB) 30'
 PNR 72+27 RT (JB) - 71+74 RT (JB) 52'
 PNR 72+30 LT (JB) - 72+94 LT (JB) 74'
 PNR 72+90 RT (JB) - 72+26 RT (JB) 58'
 PNR 72+94 LT (PB) - 73+63 LT (JB) 76'
 PNR 73+43 RT (JB) - 72+90 RT (JB) 71'
 PNR 73+63 LT (JB) - 74+20 LT (JB) 57'
 PNR 73+57 RT (JB) - 73+13 RT (JB) 49'
 PNR 74+13 RT (JB) - 73+43 RT (JB) 73'
 PNR 74+17 RT (JB) - 73+57 RT (JB) 62'
 PNR 74+20 LT (JB) - 74+80 LT (JB) 59'
 PNR 74+37 RT (JB) - 73+87 RT (JB) 52'
 PNR 74+77 RT (JB) - 74+17 RT (JB) 59'
 PNR 74+80 LT (JB) - 75+40 LT (JB) 60'
 PNR 74+94 RT (JB) - 74+13 RT (JB) 80'
 PNR 75+04 RT (JB) - 74+37 RT (JB) 67'

WIRED CONDUIT (2") (PVC)

PNR 75+37 RT (JB) - 74+77 RT (JB) 60'
 PNR 75+40 LT (JB) - 76+08 RT (JB) 102'
 PNR 75+55 RT (PB) - 75+37 RT (JB) 71'
 PNR 75+72 RT (JB) - 74+94 RT (JB) 104'
 PNR 75+75 RT (PB) - 75+04 RT (JB) 71'
 PNR 76+08 RT (JB) - 75+75 RT (PB) 95'

ADDITIONAL TWO-2" PVC CONDUITS FROM EXISTING HANDHOLE 75+77 142' RT TO POWER CABINET LOCATED AT THE MOBIL STATION APPROXIMATELY 475' AWAY (TOTAL 950').

ADDITIONAL FOUR-2" PVC CONDUITS FROM EXISTING HANDHOLE 75+77 142' RT TO DISCONNECT SWITCHES (TOTAL 50').

SEE SHEET 113 A FOR 2" CONDUIT SCHEDULE.

WIRED CONDUIT (4") (PVC)

PNR 70+80 LT (LP) - 70+80 LT (JB) 8'
 PNR 71+08 RT (JB) - 70+98 RT (LP) 8'
 PNR 71+55 LT (JB) - 71+55 LT (LP) 8'
 PNR 71+74 RT (JB) - 71+74 RT (LP) 8'
 PNR 72+26 RT (JB) - 72+27 RT (LP) 8'
 PNR 72+27 RT (JB) - 72+28 RT (LP) 8'
 PNR 72+30 LT (JB) - 72+30 LT (LP) 8'
 PNR 72+90 RT (PB) - 72+90 RT (JB) 4'
 PNR 72+90 RT (JB) - 72+90 RT (LP) 8'
 PNR 72+94 LT (JB) - 72+94 LT (LP) 8'
 PNR 73+13 RT (JB) - 73+13 RT (LP) 8'
 PNR 73+43 RT (JB) - 73+43 RT (LP) 8'
 PNR 73+57 RT (JB) - 73+57 RT (LP) 8'
 PNR 73+63 LT (JB) - 73+63 LT (LP) 8'
 PNR 73+87 RT (JB) - 73+85 RT (LP) 8'
 PNR 74+13 RT (JB) - 74+13 RT (LP) 8'
 PNR 74+17 RT (JB) - 74+17 RT (LP) 8'
 PNR 74+20 LT (JB) - 74+20 LT (LP) 8'

WIRED CONDUIT (4") (PVC)

PNR 74+37 RT (JB) - 74+37 RT (LP) 8'
 PNR 74+77 RT (JB) - 74+77 RT (LP) 8'
 PNR 74+80 RT (JB) - 74+80 LT (LP) 8'
 PNR 74+94 RT (JB) - 74+94 RT (LP) 8'
 PNR 75+04 RT (JB) - 75+04 RT (LP) 8'
 PNR 75+37 RT (JB) - 75+37 RT (LP) 8'
 PNR 75+40 LT (JB) - 75+40 LT (LP) 8'
 PNR 75+72 RT (JB) - 75+72 RT (JB) 7'
 PNR 75+72 RT (JB) - 75+70 RT (LP) 8'
 PNR 76+08 RT (JB) - 77+07 RT (LP) 8'

ELECTRICAL CONDUIT SLEEVE (6")

PNR 72+80 RT (PB) - 72+25 RT 54'
 PNR 75+73 RT (PB) - 75+54 RT 50'
 PNR 75+73 RT (PB) - 75+04 RT 70'
 PNR 75+77 RT (EHH) - 76+12 RT (EHH) 41'
 PNR 75+75 RT (EHH) - 76+12 RT (EHH) 41'

PULL BOX, DOUBLE

PNR 72+82 - 90' RT
 PNR 75+75 - 83.6' RT

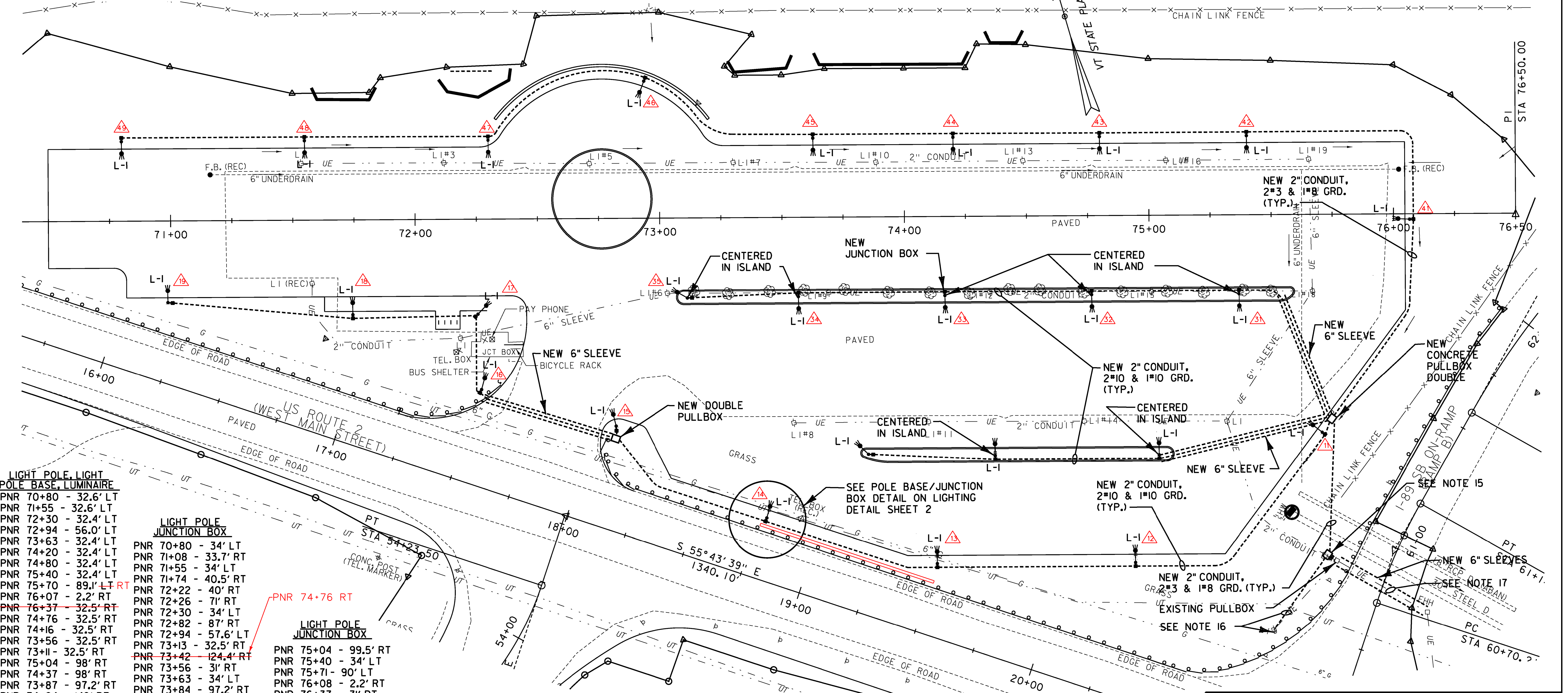
73-58@ OUTLET OF 8" PLASTIC SLEEVE (US2)

LEGEND:

- PROPOSED WIRED CONDUIT
- PROPOSED ELECTRICAL CONDUIT SLEEVE
- PROPOSED CONCRETE PULLBOX DOUBLE
- PROPOSED JUNCTION BOX
- ☉ PROPOSED LIGHT POLE & LUMINAIRE
- L-1 LUMINAIRE TYPE

NOTES:

FOR NOTES SEE LIGHTING GENERAL NOTES.



LIGHT POLE, LIGHT POLE BASE, LUMINAIRE

PNR 70+80 - 32.6' LT
 PNR 71+55 - 32.6' LT
 PNR 72+30 - 32.4' LT
 PNR 72+94 - 56.0' LT
 PNR 73+63 - 32.4' LT
 PNR 74+20 - 32.4' LT
 PNR 74+80 - 32.4' LT
 PNR 75+40 - 32.4' LT
 PNR 75+70 - 89.1' LT RT
 PNR 76+07 - 2.2' RT
 PNR 76+37 - 32.5' RT
 PNR 74+76 - 32.5' RT
 PNR 74+16 - 32.5' RT
 PNR 73+56 - 32.5' RT
 PNR 73+11 - 32.5' RT
 PNR 75+04 - 98' RT
 PNR 74+37 - 98' RT
 PNR 73+87 - 97.2' RT
 PNR 74+94 - 142' RT
 PNR 74+13 - 142' RT
 PNR 73+43 - 123' RT
 PNR 72+82 - 85' RT
 PNR 72+25 - 39' RT
 PNR 72+27 - 69.8' RT
 PNR 71+74 - 38.9' RT
 PNR 70+99 - 33.6' RT
 PNR 75+37 - 32.5' RT

LIGHT POLE JUNCTION BOX

PNR 70+80 - 34' LT
 PNR 71+08 - 33.7' RT
 PNR 71+55 - 34' LT
 PNR 71+74 - 40.5' RT
 PNR 72+22 - 40' RT
 PNR 72+26 - 71' RT
 PNR 72+30 - 34' LT
 PNR 72+82 - 87' RT
 PNR 72+94 - 57.6' LT
 PNR 73+13 - 32.5' RT
 PNR 73+42 - 124.4' RT
 PNR 73+56 - 31' RT
 PNR 73+63 - 34' LT
 PNR 73+84 - 97.2' RT
 PNR 74+13 - 143.5' RT
 PNR 74+16 - 31' RT
 PNR 74+20 - 34' LT
 PNR 74+36 - 31' RT
 PNR 74+37 - 99.5' RT
 PNR 74+80 - 34' LT
 PNR 74+94 - 143.5' RT

LIGHT POLE JUNCTION BOX

PNR 75+04 - 99.5' RT
 PNR 75+40 - 34' LT
 PNR 75+71 - 90' LT
 PNR 76+08 - 2.2' RT
 PNR 76+37 - 31' RT
 PNR 75+37 - 31' RT

KEY	DATE	BY	REVISION
△	11/9/2015	VTRANS	LIGHT POLE NUMBERS - AL-PI-96W-LED
△	11/16/2015	VTRANS	WIRED CONDUIT, SHEET 113 A



PROJECT NAME: RICHMOND
PROJECT NUMBER: CMG PARK (31)

FILE NAME: z97c186e103.dgn
 PROJECT LEADER: YASSER RIZK
 DESIGNED BY: M. STEWART
 LIGHTING PLAN LAYOUT SHEET

PLOT DATE: 4/29/2013
 DRAWN BY: M. STEWART
 CHECKED BY: Y. RIZK
 SHEET 113 OF 133