

BARRIER FENCE FOR TREE PROTECTION

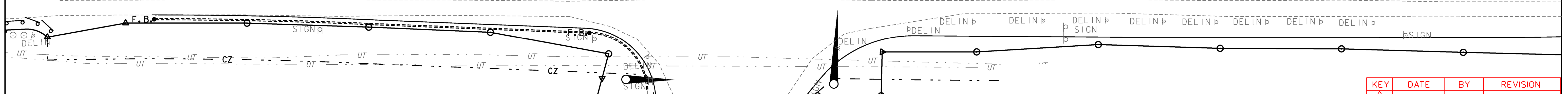
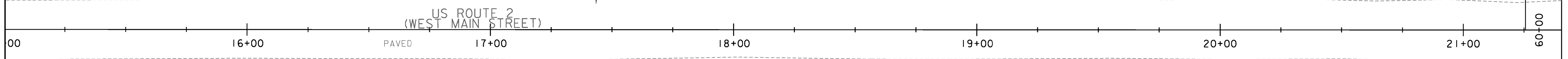
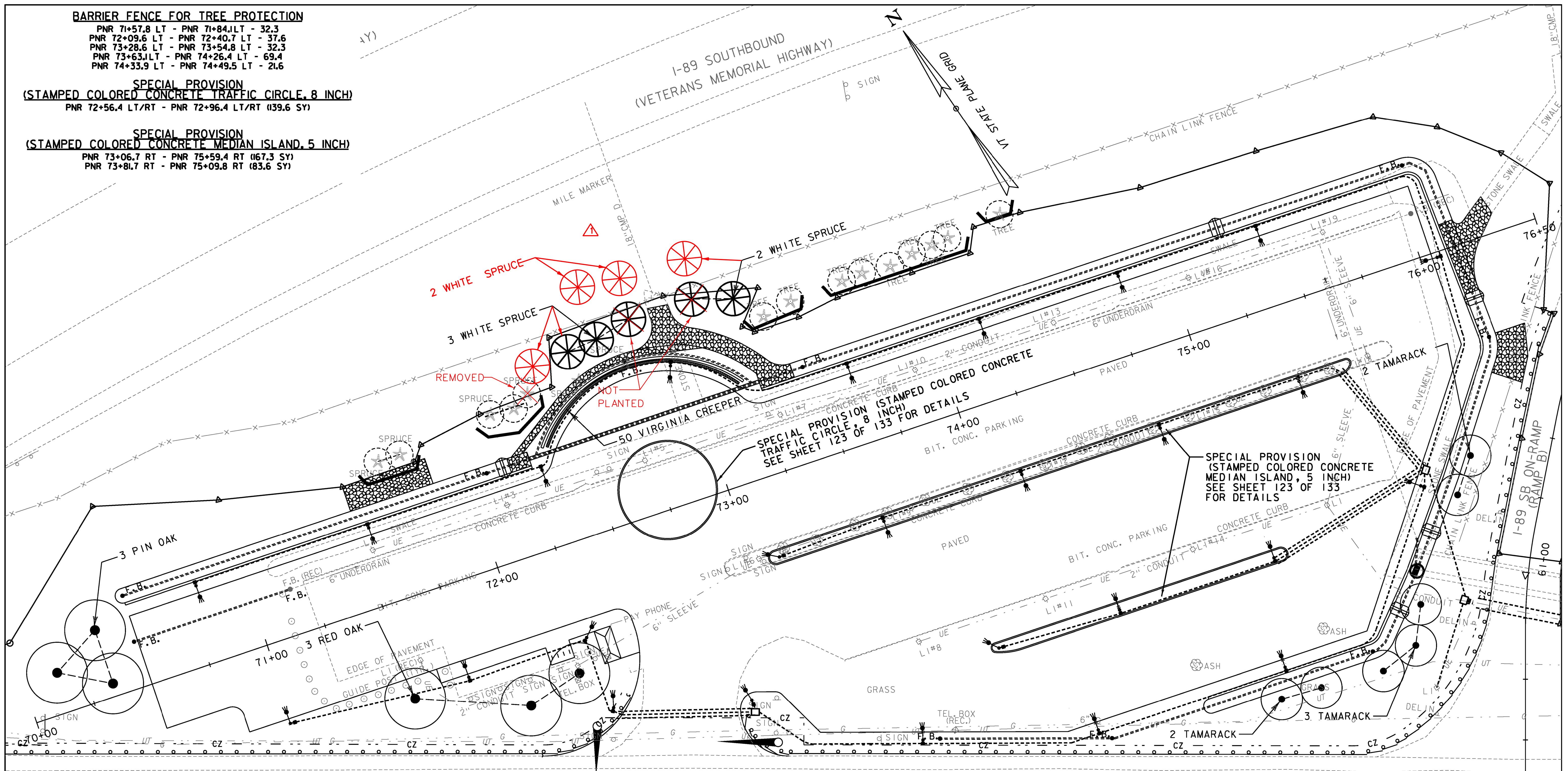
PNR 71+57.8 LT - PNR 71+84.1LT - 32.3
 PNR 72+09.6 LT - PNR 72+40.7 LT - 37.6
 PNR 73+28.6 LT - PNR 73+54.8 LT - 32.3
 PNR 73+63.1LT - PNR 74+26.4 LT - 69.4
 PNR 74+33.9 LT - PNR 74+49.5 LT - 21.6

**SPECIAL PROVISION
 (STAMPED COLORED CONCRETE TRAFFIC CIRCLE, 8 INCH)**

PNR 72+56.4 LT/RT - PNR 72+96.4 LT/RT (139.6 SY)

**SPECIAL PROVISION
 (STAMPED COLORED CONCRETE MEDIAN ISLAND, 5 INCH)**

PNR 73+06.7 RT - PNR 75+59.4 RT (167.3 SY)
 PNR 73+81.7 RT - PNR 75+09.8 RT (83.6 SY)



- GRASS NOTES:
1. THE CONTRACTOR SHALL NOT EXCAVATE OR USE HEAVY CONSTRUCTION EQUIPMENT WITHIN THE DRIP LINE OF EXISTING TREES TO REMAIN. THE CONTRACTOR SHALL NOT ROUND THE SLOPES FROM STA 71+50 TO 74+50, OR AS DIRECTED BY THE ENGINEER.
 2. SEE LANDSCAPE DETAILS FOR PLANT LIST.
 3. SEE SHEET I13-I15 FOR LIGHTING PLAN AND DETAILS.



KEY	DATE	BY	REVISION
▲	11/16/2013	VTRANS	PLANTING UPDATE

PROJECT NAME: RICHMOND
 PROJECT NUMBER: CMG PARK (3I)
 FILE NAME: z97cl86landbdr.dgn PLOT DATE: 4/30/2013
 PROJECT LEADER: ERIK ATKINS DRAWN BY: N. BOSAN
 DESIGNED BY: J. RIEMENSCHNEIDER CHECKED BY: E. ATKINS
 LANDSCAPE PLAN SHEET 109 OF 133