

**DEMOLITION AND DISPOSAL OF BUILDING**

PNR 72+31.9 RT  
**REMOVE EXISTING PAVEMENT  
 (COMMON EXCAVATION)**

PNR 71+25.0 LT - PNR 76+04.3 LT  
 US RTE 2 18+23.1 LT - PNR 76+04.3 RT  
 PNR 72+55.6 RT - PNR 72+96.9 RT  
 PNR 72+86.0 RT - PNR 75+79.6 RT

**BITUMINOUS CRACK SEALING**

PNR 70+50.0 - PNR 76+05.0  
 (SEAL ALL CRACKS AS DIRECTED BY THE ENGINEER)

**STONE FILL, TYPE I**

PNR 72+19.8 RT - 73+40.5 RT LT  
 PNR 76+17.5 LT/RT - 76+33.9 RT

**STONE FILL, TYPE II**

PNR 71+50.0 LT - 71+86.0 LT PNR 70+50.0 LT - 71+13.0 LT PNR 72+00.0 LT - 72+34.0 LT  
 PNR 76+13.0 RT - 76+32.3 RT PNR 71+42.0 LT - 71+62.0 LT PNR 73+35.0 LT - 74+51.0 LT

**VERTICAL GRANITE CURB**

PNR 72+55.9 LT - PNR 72+96.9 LT  
 PNR 73+06.6 RT - PNR 75+59.5 RT  
 PNR 73+81.6 RT - PNR 75+09.9 RT

**REMOVAL OF EXISTING CURB**

PNR 71+22.5 LT - PNR 75+97.22 LT/RT

**PORTLAND CEMENT CONCRETE SIDEWALK, 8 INCH**

PNR 71+62.8 RT - PNR 72+45.4 RT  
**REMOVING AND RESETTING FENCE**

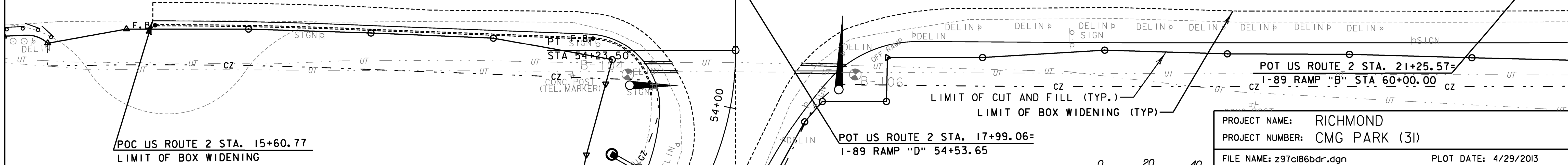
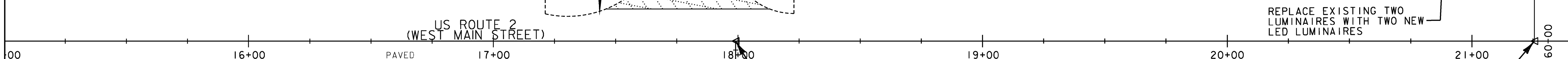
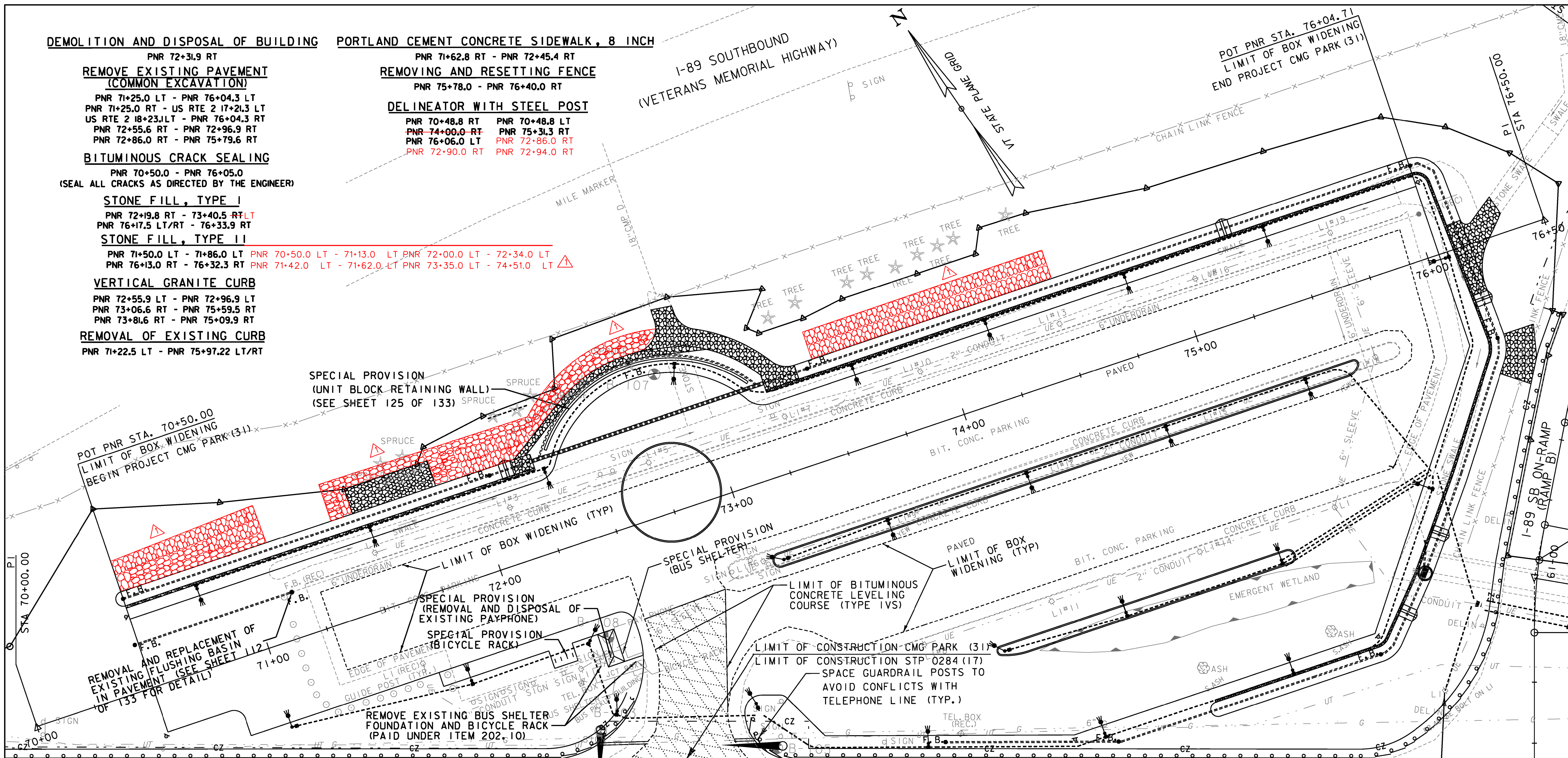
PNR 75+78.0 - PNR 76+40.0 RT

**DELINEATOR WITH STEEL POST**

PNR 70+48.8 RT PNR 70+48.8 LT  
 PNR 74+00.0 RT PNR 75+31.3 RT  
 PNR 76+06.0 LT PNR 72+86.0 RT  
 PNR 72+90.0 RT PNR 72+94.0 RT

I-89 SOUTHBOUND  
 (VETERANS MEMORIAL HIGHWAY)

POT PNR STA. 76+04.71  
 LIMIT OF BOX WIDENING  
 END PROJECT CMG PARK (31)



PROJECT NAME:	RICHMOND
PROJECT NUMBER:	CMG PARK (31)
FILE NAME:	z97cl86bdr.dgn
PROJECT LEADER:	ERIK ATKINS
DESIGNED BY:	T. BIGELOW
ROADWAY LAYOUT SHEET 5	
PLOT DATE:	4/29/2013
DRAWN BY:	N. BOSAN
CHECKED BY:	E. ATKINS
SHEET	105 OF 133

KEY	DATE	BY	REVISION
▲	11/16/2015	VTRANS	ADDITIONAL STONE FILL, TYPE II LOCATIONS



MATCHLINE STP 0284 (17)  
 ROADWAY LAYOUT SHEET 3