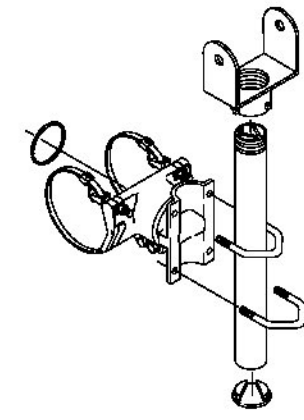


CAMERA EXTENSION BRACKET FOR MAST

N.T.S.



TWO PIECE CAMERA MOUNT
TUBE LENGTHS: 23", 37", 46", OR 74"
BAND LENGTHS: 29", 36", 42", 48", OR 56"

NOTES:
ALL ASSEMBLIES SHALL HAVE STEEL FASTENERS AND STAINLESS STEEL CLAMP SCREW KITS.
FOR 2 PIECE BRACKET MOUNTS SHALL BE SPECIFIED FOR CAMERA TYPE.

SEE SHEET 90 FOR CROSS SECTIONS AT PROPOSED MAST ARM POLES

SEE SHEETS 56-59 FOR PAVEMENT MARKINGS AND SIGNS LAYOUT

MAJOR EQUIPMENT LIST

EQUIPMENT ITEM NO. 678.15	US ROUTE 2 (WEST MAIN STREET) @ I-89 SB OFF-RAMP D
CANTILEVER POLES W/MAST ARMS	4
NEW 12" TRAFFIC SIGNAL HEADS (ONE-WAY, 3-SECTION) W/TUNNEL VISORS, DISCONNECT HANGERS, BACKPLATES AND MOUNTING HARDWARE	9
TS-2 TYPE I CONTROLLER/CABINET	1
CAMERA EXTENSION BRACKET (EA)	4
CAMERA ASSEMBLY (EA)	4
VIDEO DETECTION PROCESSOR (EA)	4
VIDEO DETECTION CABLE (LF)	530
GPS TIME SYNCHRONIZATION UNIT	1
LED STREET LIGHTS	4

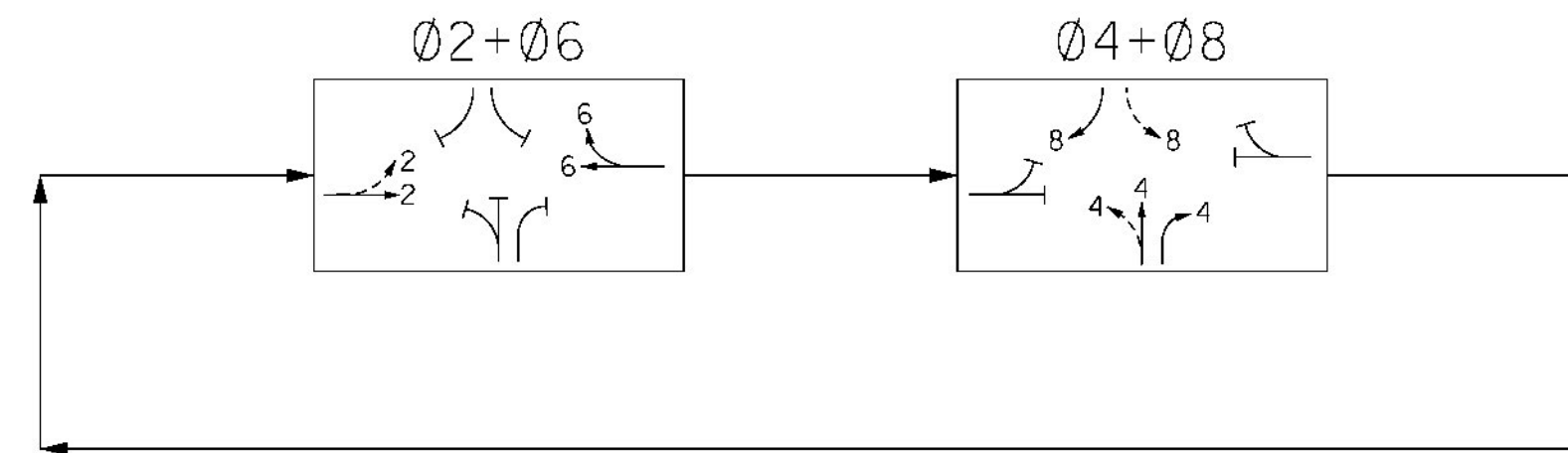
EQUIPMENT	ITEM NO.	UNIT	US ROUTE 2 (WEST MAIN STREET) @ I-89 SB OFF-RAMP D	NOTES
WIRED CONDUIT (2") (PVC)	678.23	LF	539	-
WIRED CONDUIT (2 1/2") (PVC)	678.23	LF	105	-
PULLBOX - STANDARD	678.25	EA	3	-
ELECTRICAL CONDUIT SLEEVE	678.30	LF	186	8 INCHES

THE QUANTITIES LISTED ABOVE ARE APPROXIMATE AND ARE FURNISHED FOR INFORMATION ONLY. MISCELLANEOUS (UNLISTED) WIRE, CABLE, HARDWARE ETC., ARE REQUIRED TO PROVIDE FOR A FUNCTIONING TRAFFIC SIGNAL SYSTEM. THE CONTRACTOR IS RESPONSIBLE FOR VERIFICATION OF THE NUMBER OF ITEMS AND THE TYPES OF EQUIPMENT REQUIRED.

US ROUTE 2 (WEST MAIN STREET) @ I-89 SB OFF-RAMP D

ELECTRICAL CONDUIT SLEEVE (8") (PVC)	WIRED CONDUIT (2") (PVC)	WIRED CONDUIT (2 1/2") (PVC)
PB4 TO MP2A - 82'	PB4 TO MP2A - 98'	PB5 TO PB4 - 60'
PB5 TO PB4 - 49'	PB4 TO MP2D - 17'	PB5 TO CONTROLLER - 45'
CONTROLLER TO MP2B - 55'	CONTROLLER TO MP2B - 60'	
	CONTROLLER TO MP2C - 12'	
	CONTROLLER TO PB5 - 43'	
	CONTROLLER TO PB6 - 43'	
	CONTROLLER TO PB6 - 200'	
	PB6 TO SERVICE CONNECTION - 66'	

PHASING DIAGRAM
US ROUTE 2 (WEST MAIN STREET) @ I-89 SB OFF-RAMP D



PROPOSED SIGNAL FACE ARRANGEMENT
12" LENSES



FACE 2, 4, 6, 8

US ROUTE 2 (WEST MAIN STREET) @ I-89 SB OFF-RAMP RAMP D

TABLE OF CHANGE SEQUENCE							FLASHING OPERATION
FACE	Ø2 + Ø6			Ø4 + Ø8			
	R/W	CLEAR TO ALL OTHER PHASES	R/W	CLEAR TO ALL OTHER PHASES	R/W	CLEAR TO ALL OTHER PHASES	
2	G	Y	R	R	R	R	FY
4	R	R	R	G	Y	R	FR
6	G	Y	R	R	R	R	FY
8	R	R	R	G	Y	R	FR

US ROUTE 2 (WEST MAIN STREET) @ I-89 SB OFF-RAMP D

LOCAL PROGRAMMING	CONTROLLER TIMING CHART							
	PHASE							
	1	2	3	4	5	6	7	8
MINIMUM GREEN		8		8		8		8
PASSAGE/VEHICLE EXT		3		3		3		3
YELLOW CLEARANCE		4		3		4		3
ALL RED CLEARANCE		2		3		2		3
MAX. 1 GREEN-60 SEC		40		8		40		8
MAX. 2 GREEN-60 SEC		34		14		34		14
SEC/AT		-		-		-		-
TIME BEFORE REDUCE		-		-		-		-
TIME TO REDUCE		-		-		-		-
WALK		-		-		-		-
FLASHING DON'T WALK		-		-		-		-
DON'T WALK		-		-		-		-
RECALL		SOFT		N.L.		SOFT		N.L.

US ROUTE 2 (WEST MAIN STREET) @ I-89 SB OFF-RAMP D
COORDINATION TIMING (SECONDS)

DIAL SPLIT	CYCLE LENGTH	PHASES								OFFSETS	
		1	2	3	4	5	6	7	8	SEC	%
1 - 1	60		46		14		46		14	0	0
2 - 1	60		40		20		40		20	0	0
1 - 1		WEEKDAYS - 0600 - 0900									
2 - 1		WEEKDAYS - 1500 - 1900									

FOR ALL OTHER TIMES, THE INTERSECTION SHALL OPERATE IN FREE MODE, WITH MAX 2 GREEN TIMINGS.

NOTES:

- OFFSET IS REFERENCED AT THE END OF PHASE 2.
- SPLITS AND OFFSETS ARE SHOWN IN SECONDS.
- VIDEO DETECTION AREAS ARE IN NON-LOCK PRESENCE MODE. VIDEO DETECTOR 4B AND 8B ARE TO BE PROGRAMMED WITH A DELAY OF 5 SECONDS, NON-LOCK.
- ANY PULL BOX OR JUNCTION BOX WITHIN SIDEWALK SHALL HAVE A SKID RESISTANT COVER.
- PROPOSED GPS SYSTEM WILL BE USED TO COORDINATE SIGNAL WITH THE PROPOSED SIGNAL AT THE INTERSECTION OF US ROUTE 2 / VT ROUTE 117.

PROJECT NAME: RICHMOND
PROJECT NUMBER: STP 0284 (17)

FILE NAME: z97cl86trfbdr.dgn PLOT DATE: 4/29/2013
PROJECT LEADER: JEFFREY MAXTUTIS DRAWN BY: Y.CAO/LALMY
DESIGNED BY: J. SOBEL CHECKED BY: D.FLYNN
TRAFFIC SIGNAL PLANS SHEET 5 SHEET 70 OF 133