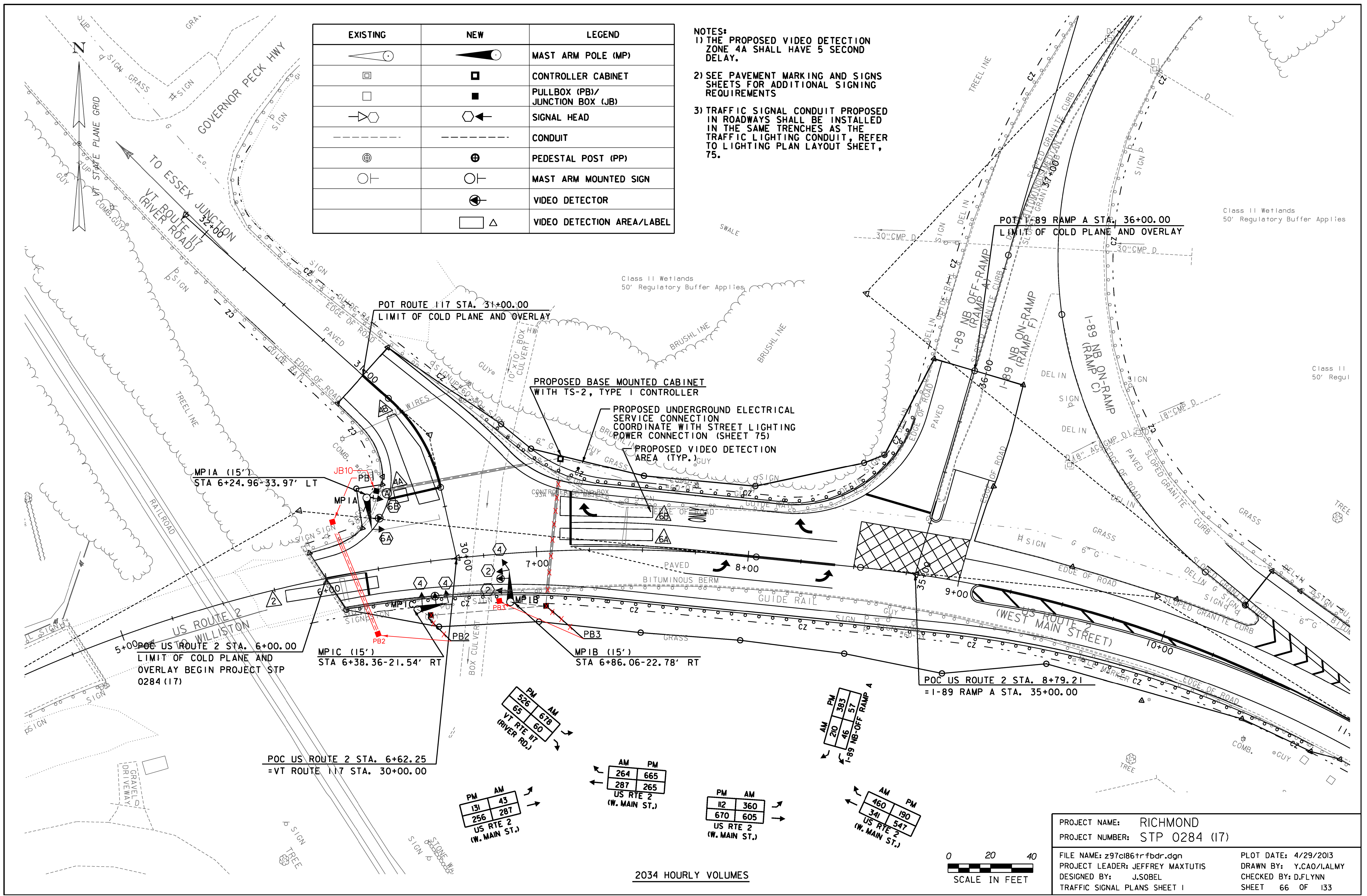


EXISTING	NEW	LEGEND
		MAST ARM POLE (MP)
		CONTROLLER CABINET
		PULLBOX (PB)/ JUNCTION BOX (JB)
		SIGNAL HEAD
		CONDUIT
		PEDESTAL POST (PP)
		MAST ARM MOUNTED SIGN
		VIDEO DETECTOR
		VIDEO DETECTION AREA/LABEL

- NOTES:**
- 1) THE PROPOSED VIDEO DETECTION ZONE 4A SHALL HAVE 5 SECOND DELAY.
  - 2) SEE PAVEMENT MARKING AND SIGNS SHEETS FOR ADDITIONAL SIGNING REQUIREMENTS
  - 3) TRAFFIC SIGNAL CONDUIT PROPOSED IN ROADWAYS SHALL BE INSTALLED IN THE SAME TRENCHES AS THE TRAFFIC LIGHTING CONDUIT, REFER TO LIGHTING PLAN LAYOUT SHEET, 75.



PM	AM
526	678
65	60

VT RTE 117 (RIVER RD.)

AM	PM
264	665
287	265

US RTE 2 (W. MAIN ST.)

PM	AM
112	360
670	605

US RTE 2 (W. MAIN ST.)

AM	PM
460	190
341	547

US RTE 2 (W. MAIN ST.)

PM	AM
131	43
256	287

US RTE 2 (W. MAIN ST.)

2034 HOURLY VOLUMES



PROJECT NAME: RICHMOND  
PROJECT NUMBER: STP 0284 (17)  
FILE NAME: z97cl86trfbd.dgn  
PROJECT LEADER: JEFFREY MAXTUTIS  
DESIGNED BY: J.SOBEL  
TRAFFIC SIGNAL PLANS SHEET 1  
PLOT DATE: 4/29/2013  
DRAWN BY: Y.CAO/LALMY  
CHECKED BY: D.FLYNN  
SHEET 66 OF 133