

GPS CONTROL POINTS

**HVCTRL #1**

CGS DISK  
 "N24 1935"  
 N = 703025.864  
 E = 1505661.647  
 ELEV. = 304.970

GENERAL LOCATION, RICHMOND, VT., ABOUT 8.5 MI (13.7 KM) EAST OF BURLINGTON, ABOUT 24 MI (38.6 KM) WEST-NORTHWEST OF MONTPELIER, AND ABOUT 26 MI (41.8 KM) SOUTH OF ST ALBANS.  
 TO REACH FROM THE INTERSECTION OF VT ROUTE 117 AND US ROUTE 2 IN RICHMOND GO NORTH ALONG VT ROUTE 117 FOR 0.3 MI (0.5 KM) TO THE MARK ON THE LEFT, WEST OF THE CENTRAL VERMONT RAILROAD TRACKS AND ABOUT OPPOSITE THE NORTH END OF THE LUCKY SPOT VARIETY STORE. THE MARK IS 9.5 M (31.2 FT) WEST OF AND ABOUT 0.5 M (1.6 FT) LOWER THAN THE WEST RAIL OF THE CVRR, 25.1 M (82.3 FT) WEST OF THE CENTERLINE OF VT ROUTE 117, 25.0 M (82.0 FT) NORTH OF THE CENTERLINE OF A FARM DRIVE, 13.8 M (45.3 FT) WEST-NORTHWEST OF RAILROAD MILEPOST W101, AND 0.2 M (0.7 FT) EAST OF A FIBERGLASS WITNESS POST IN THE RAILROAD RIGHT-OF-WAY FENCE. IT IS SET IN THE TOP OF A 15 CM SQUARE CONCRETE MONUMENT WHICH PROJECTS 7 CM ABOVE GROUND SURFACE.

\* DESCRIPTION PROVIDED BY VERMONT AGENCY OF TRANSPORTATION GEODETIC SURVEY UNIT

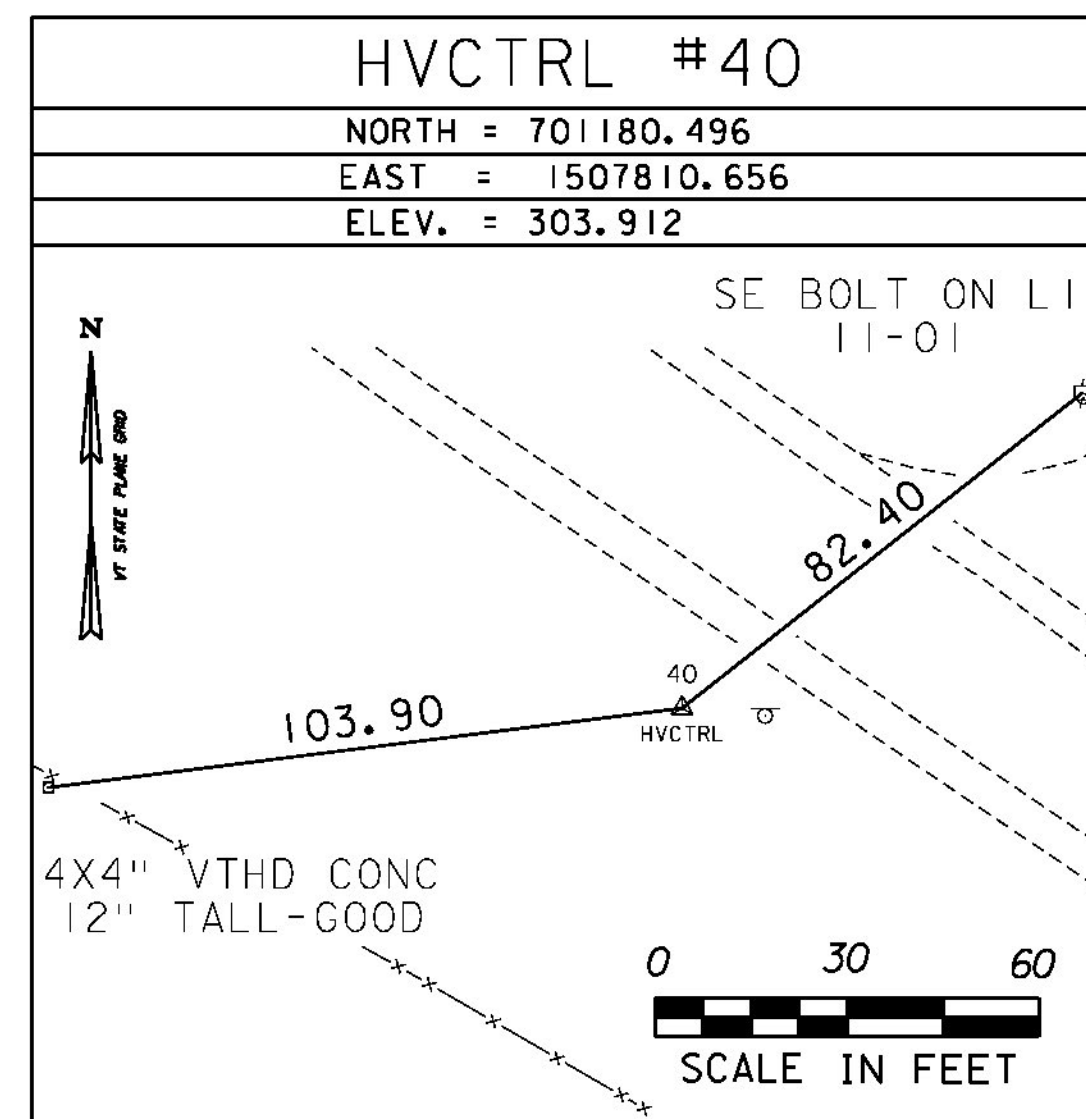
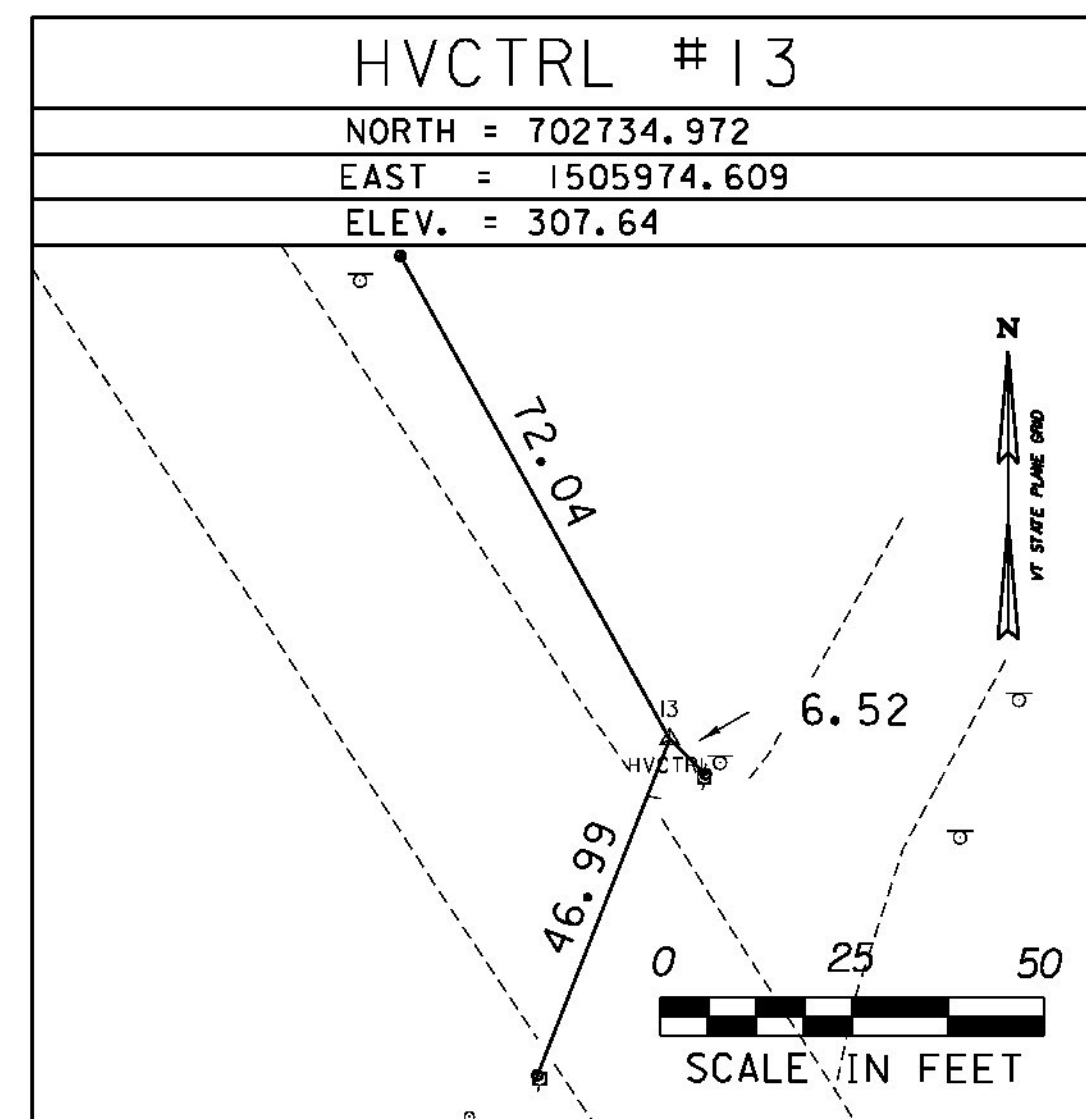
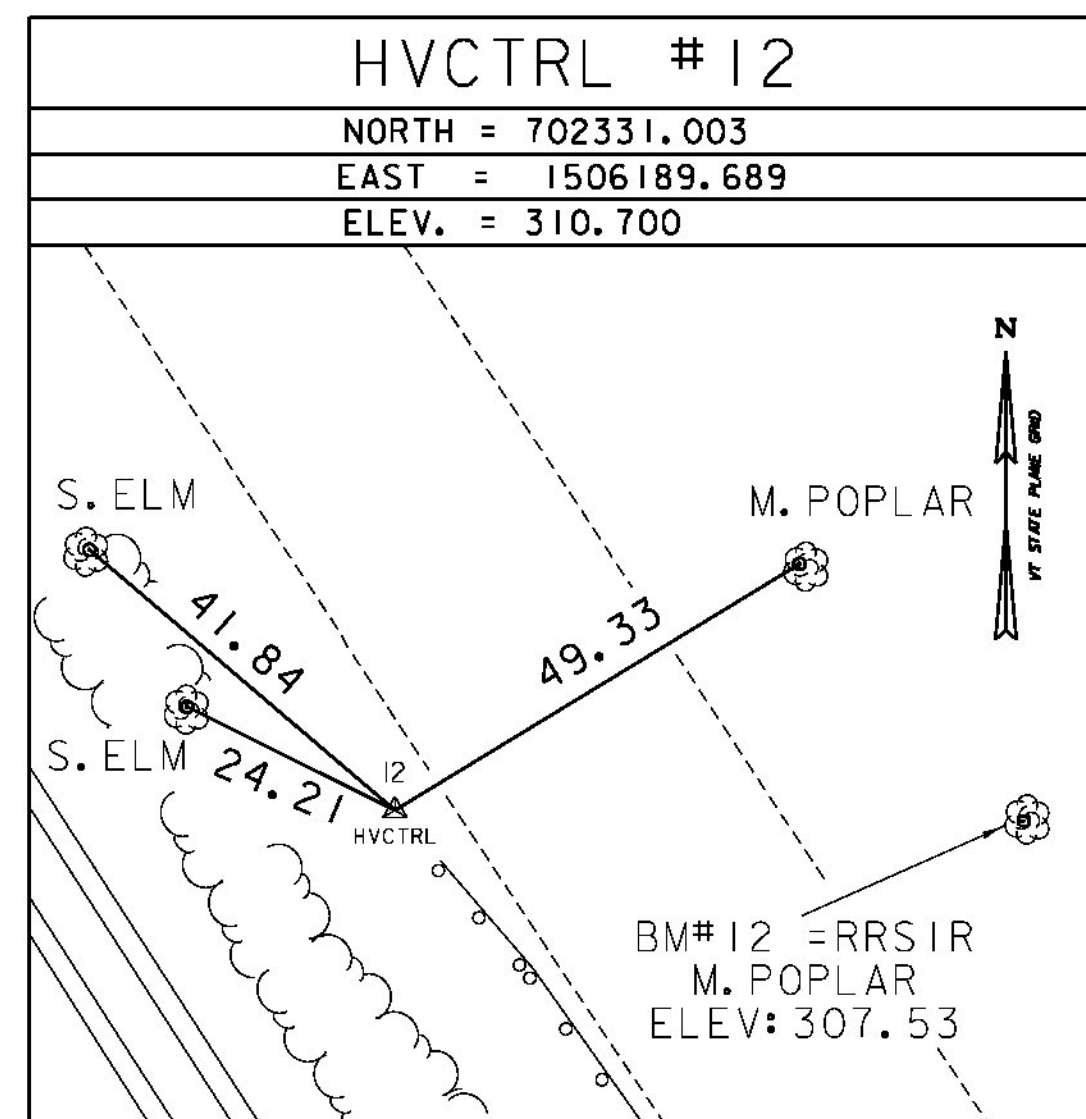
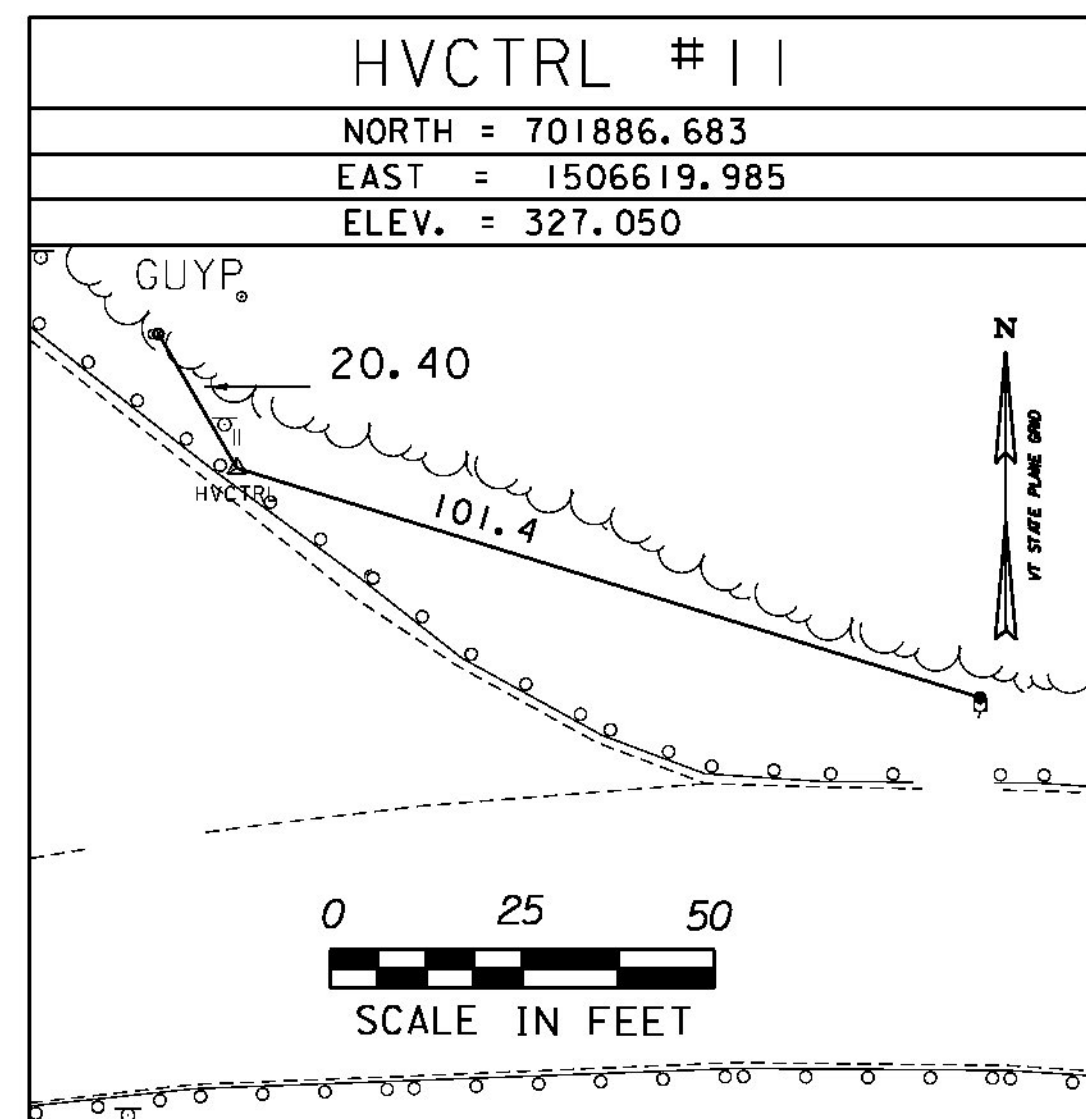
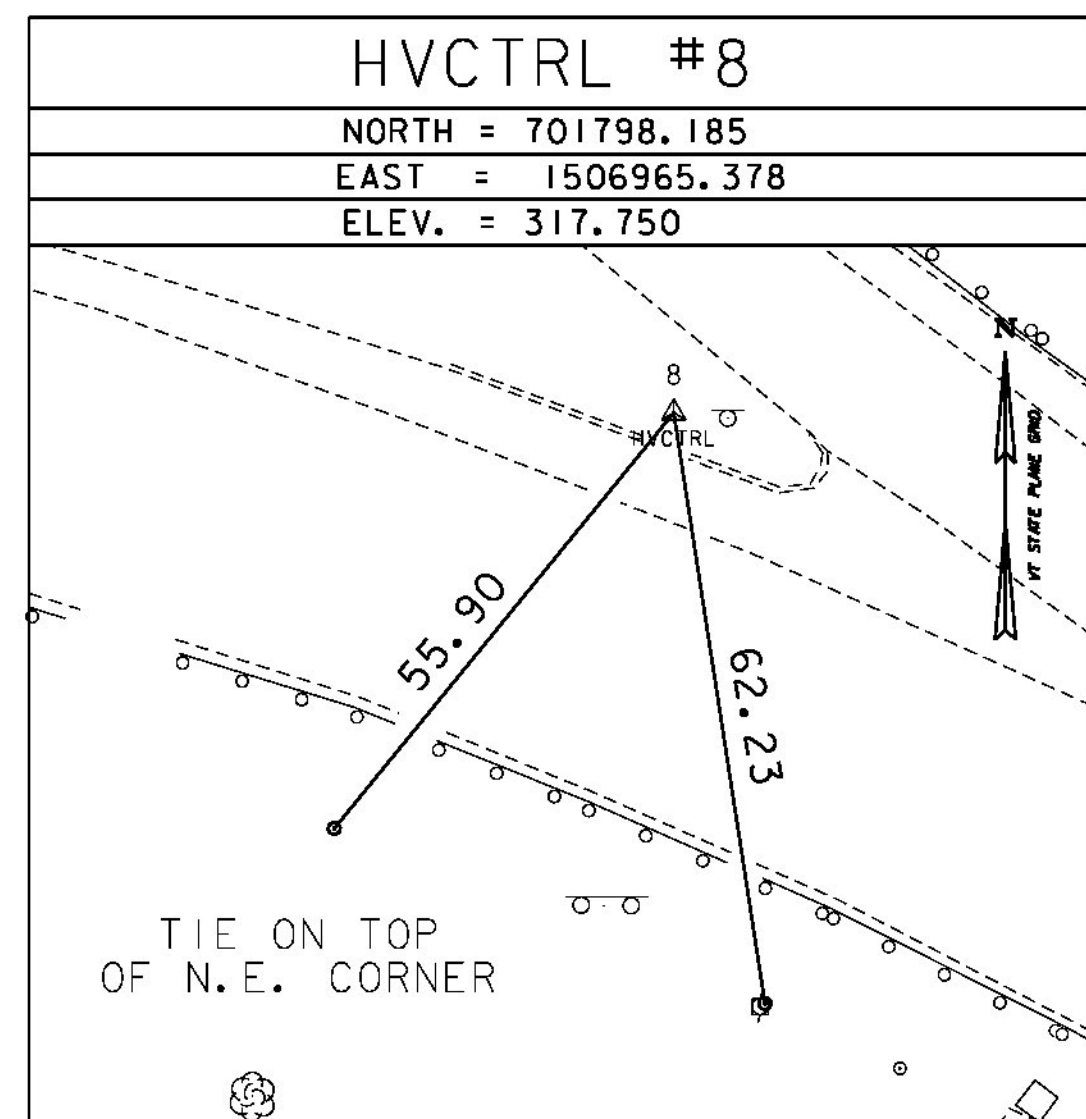
**HVCTRL #2**

VTAT DISK  
 "ACCIDENT 1994"  
 N = 701724.618  
 E = 1505713.862  
 ELEV. = 321.077

GENERAL LOCATION, RICHMOND, VT.  
 OWNERSHIP: SOUTHWORTH MILTON INC., RICHMOND VT.

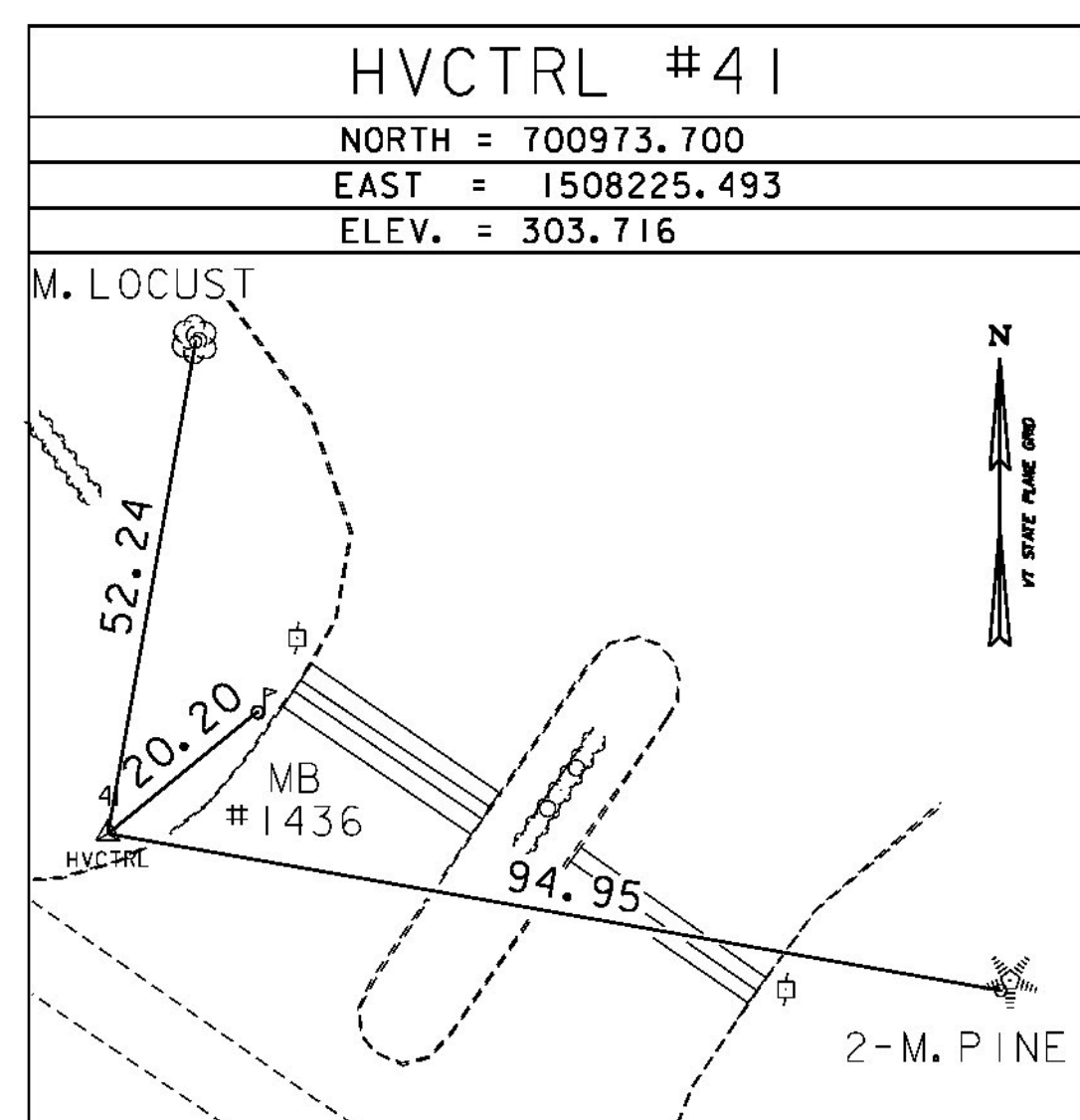
TO REACH FROM THE INTERSECTION OF US ROUTE 2 AND VT ROUTE 117 GO WEST ALONG US ROUTE 2 FOR 0.15 MI (0.24 KM) TO THE CATERPILLAR DEALERSHIP. TURN RIGHT AND GO NORTH ALONG CAT LANE FOR ABOUT 80 M (262.5 FT) TO THE SITE OF MARK ON THE LEFT IN A LAWN. THE MARK IS SET FLUSH WITH GOUND SURFACE IN THE TOP OF A 1.7 M (5.6 FT) X 0.4 M (1.3 FT) ROCK OUTCROP. IT IS 16.5 M (54.1 FT) WEST OF AND ABOUT 2 M (6.6 FT) HIGHER THAN THE CENTERLINE OF CAT LANE, 13.0 M (42.7 FT) NORTHWEST OF A LUMEN (STREETLIGHT), 64.2 M (210.6 FT) NORTH NORTHWEST OF POLE NO 65.

TRAVERSE TIES

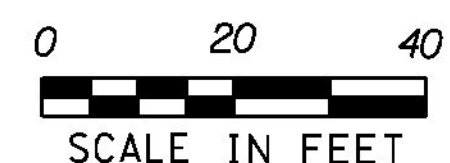
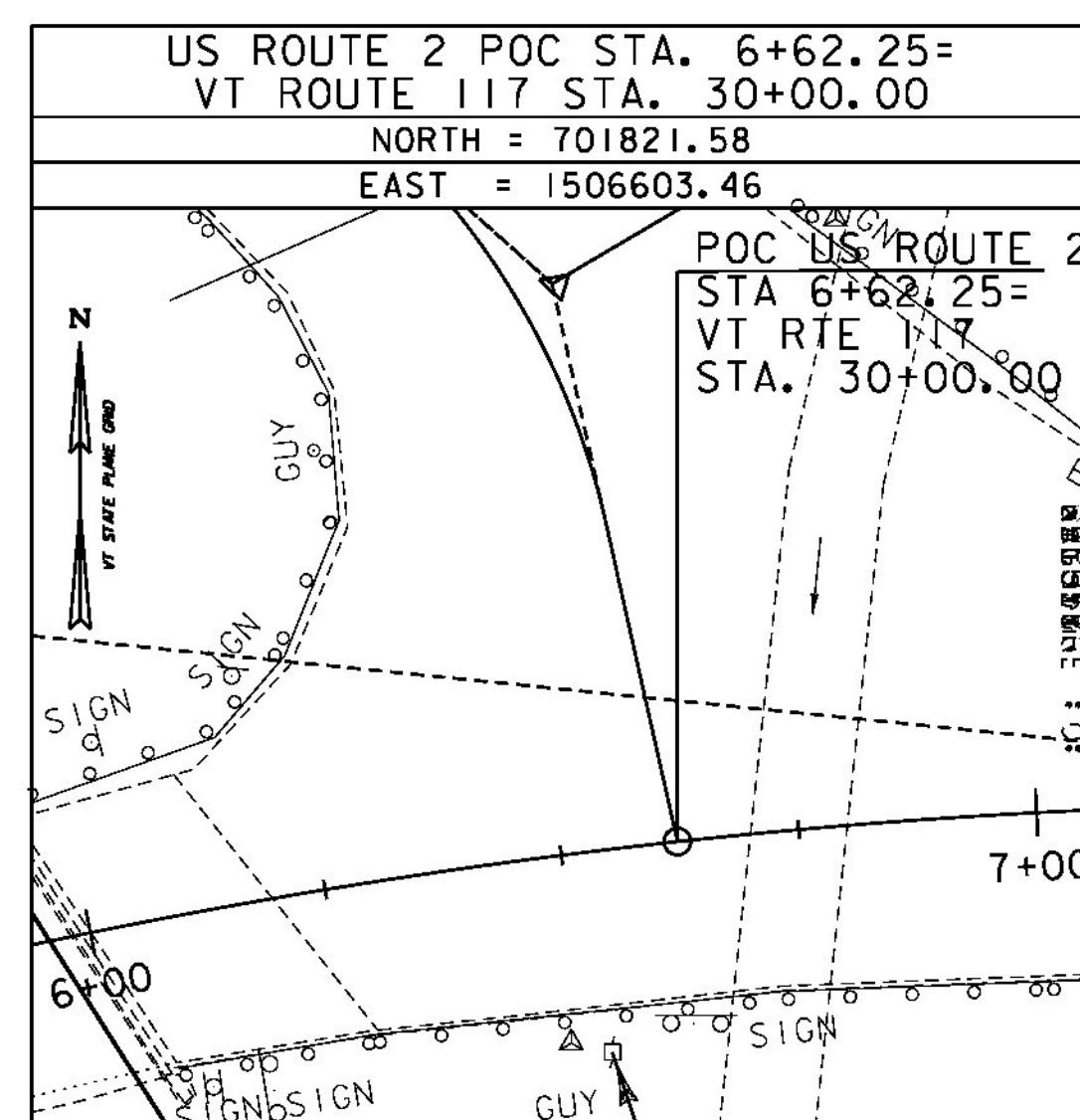
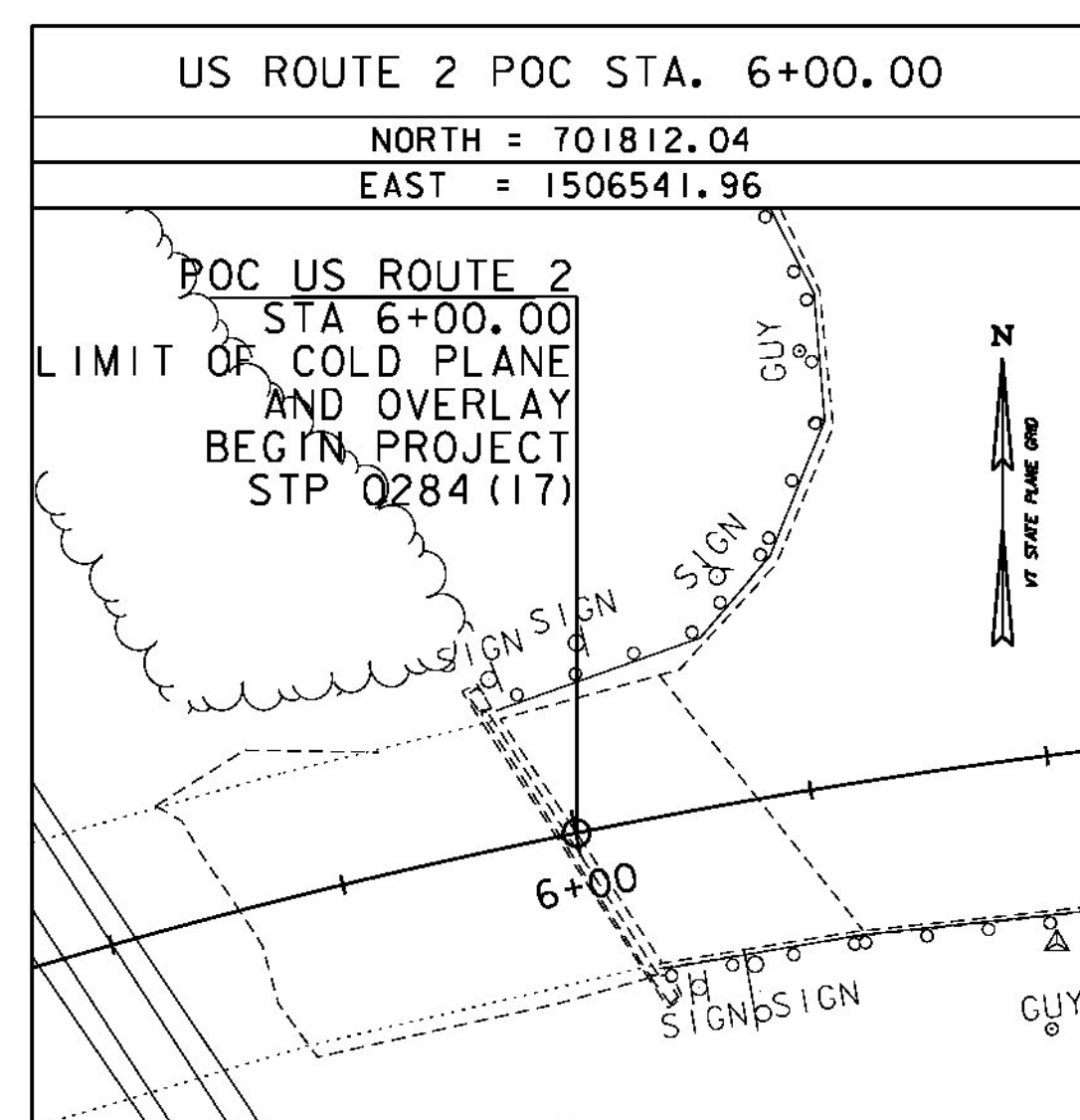
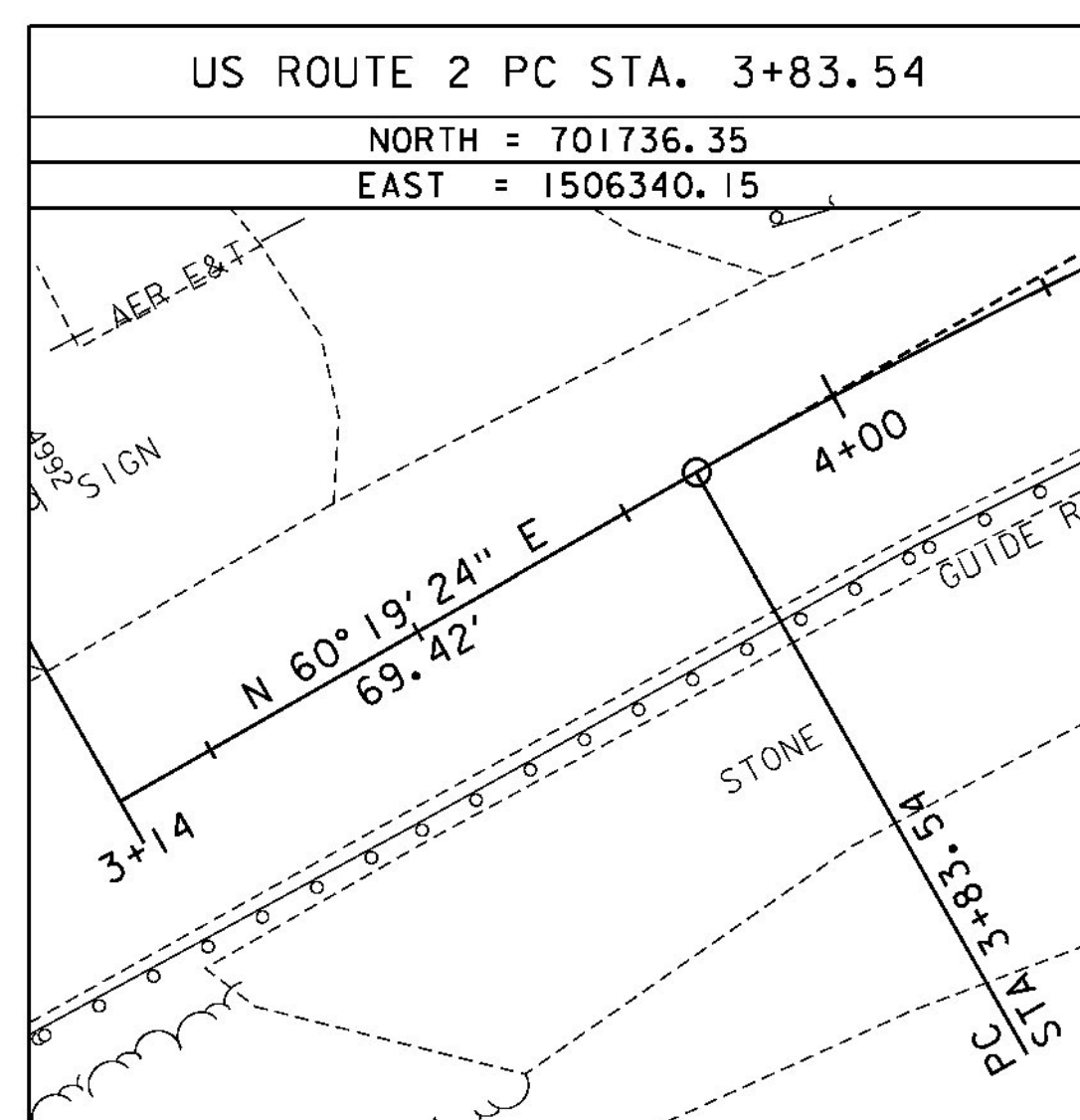


\* MAIN TRAVERSE COMPLETED: DEC. 12, 2004 BY: L. ORVIS PC, C. HARDING

TRAVERSE TIES



ALIGNMENT TIES



DATUM	
VERTICAL	NAVD88
HORIZONTAL	NAD83 (1992)
ADJUSTMENT	COMPASS

PROJECT NAME: RICHMOND	
PROJECT NUMBER: STP 0284 (17)	
FILE NAME: z97c186+1.dgn	PLOT DATE: 4/29/2013
PROJECT LEADER: ERIK ATKINS	DRAWN BY: A. ACHARYA
DESIGNED BY: T. BIGELOW	CHECKED BY: E. ATKINS
TIE SHEET 1	SHEET 42 OF 133