

**GEOTEXTILE FOR SILT FENCE,
WOVEN WIRE REINFORCED**

US RTE 2 6+00 RT - US RTE 2 8+25 RT
VT RTE #17 3+00 RT - I-89 RAMP "A" 36+00 LT

SEED

US RTE 2 6+00 RT - US RTE 2 10+00 RT
VT RTE #17 3+00 RT - I-89 RAMP "A" 36+00 LT

SEED, WINTER RYE

~~US RTE 2 6+00 RT - US RTE 2 10+00 RT~~
~~VT RTE #17 3+00 RT - I-89 RAMP "A" 36+00 LT~~

HAY MULCH

US RTE 2 6+00 RT - US RTE 2 10+00 RT
VT RTE #17 3+00 RT - I-89 RAMP "A" 36+00 LT

TOP SOIL

US RTE 2 6+00 RT - US RTE 2 10+00 RT
VT RTE #17 3+00 RT - I-89 RAMP "A" 36+00 LT

TEMPORARY EROSION MATTING

US RTE 2 7+50 LT - I-89 RAMP "A" 36+00 LT

PERMANENT EROSION MATTING

US RTE 2 7+75 - US RTE 2 8+25

**INLET PROTECTION DEVICE, TYPE I
(STAKED FABRIC)**

US RTE 2 9+38 LT

BARRIER FENCE

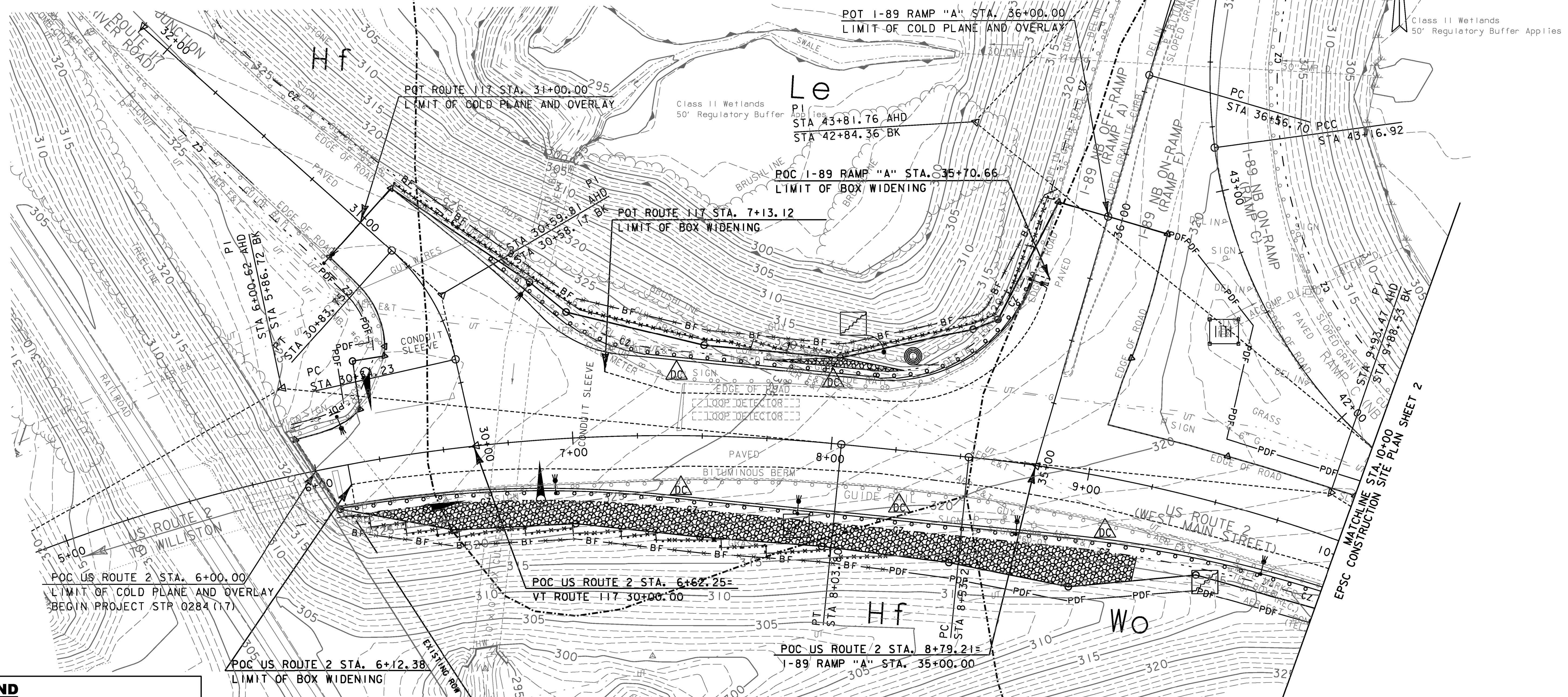
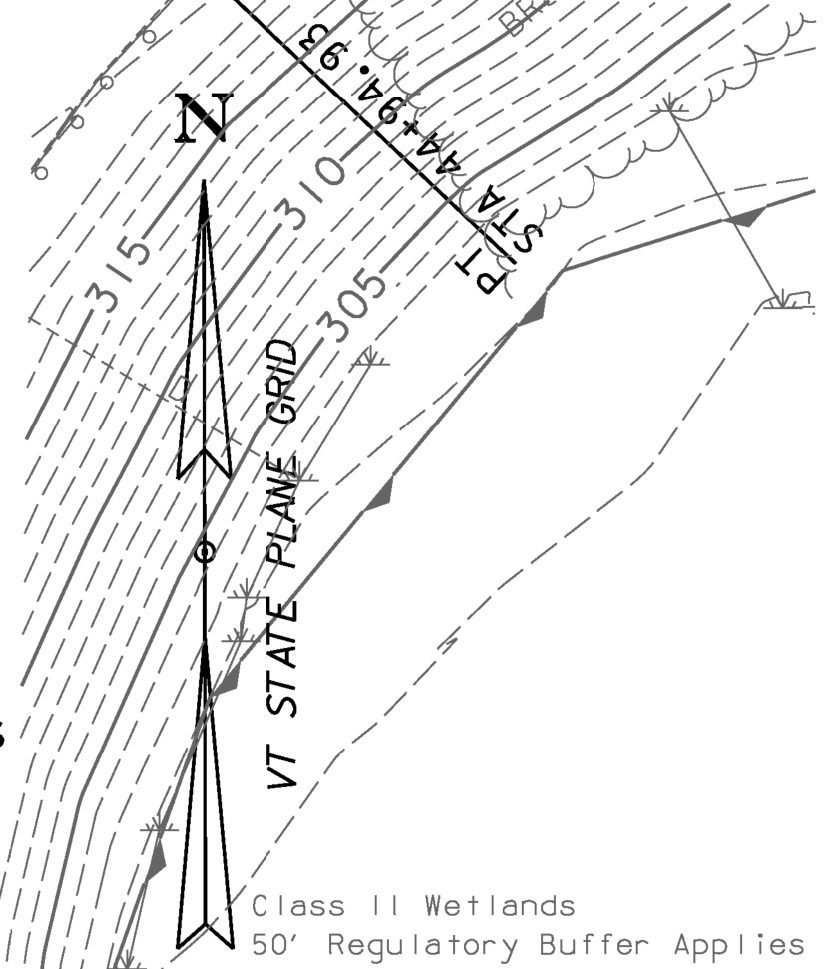
US RTE 2 6+00 RT - US RTE 2 8+25 RT
VT RTE #17 3+00 RT - I-89 RAMP "A" 36+00 LT

PROJECT DEMARCATION FENCE

US RTE 2 6+00 LT - VT RTE #17 3+00 LT
US RTE 2 8+25 RT - US RTE 2 10+00 RT
I-89 RAMP "A" 36+00 RT - US RTE 2 10+00 LT

NOTES:

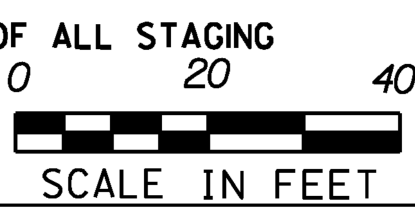
- SEE EPSC DETAIL SHEETS FOR CONSTRUCTION DETAILS.
- ALL AREAS OF DISTURBANCE MUST HAVE TEMPORARY OR FINAL STABILIZATION WITHIN 7 DAYS OF THE INITIAL DISTURBANCE. AFTER THIS TIME, ANY DISTURBANCE IN THE AREA MUST BE STABILIZED AT THE END OF EACH WORK DAY. THE FOLLOWING EXCEPTIONS APPLY:
I) STABILIZATION IS NOT REQUIRED IF WORK IS TO CONTINUE IN THE AREA WITHIN THE NEXT 24 HOURS AND THERE IS NO PRECIPITATION FORECAST FOR THE NEXT 24 HOURS.
II) STABILIZATION IS NOT REQUIRED IF THE WORK IS OCCURRING IN A SELF CONTAINED EXCAVATION WITH A DEPTH OF 2 FEET OR GREATER.
- THE CONTRACTOR SHALL LIMIT CONCURRENT EARTH DISTURBANCE TO 2 ACRES OR LESS AT ANY ONE TIME.
- THE CONTRACTOR SHALL MINIMIZE ANY SOIL DISTURBANCES BETWEEN OCTOBER 15 THROUGH APRIL 15, TO ASSURE A VIGOROUS CATCH OF VEGETATIVE COVER. SEEDING AND MULCHING SHALL BE COMPLETED BY SEPTEMBER 15 TO THE EXTENT POSSIBLE, OR AS DIRECTED BY THE ENGINEER.
- THE ON-SITE PLAN COORDINATOR SHALL INSPECT ALL EROSION AND SEDIMENT CONTROL STRUCTURES AND MEASURES AT LEAST ONCE EVERY SEVEN (7) CALENDAR DAYS AND AS SOON AS POSSIBLE BUT NOT MORE THAN 24 HOURS AFTER ANY STORM EVENT. INSPECTION FREQUENCY MAY BE REDUCED TO LESS THAN ONE (1) PER MONTH IF THE ENTIRE SITE IS STABILIZED.



LEGEND

--- SOIL TYPE BOUNDARY		PIPE INLET PROTECTION
--- 300 --- 5' INTERVAL PROPOSED CONTOUR		FILTER FABRIC DROP INLET PROTECTION
--- 1' INTERVAL PROPOSED CONTOUR		
--- 300 --- 5' INTERVAL EXISTING CONTOUR		
--- 1' INTERVAL EXISTING CONTOUR		
--- EXIST. PROPERTY/ROW LINE		

- THE CONTRACTOR SHALL IMMEDIATELY ROUGHEN ALL DISTURBED SOIL SURFACES TO THE SATISFACTION OF THE ENGINEER BY THE USE OF TRACK DRIVEN BULLDOZERS, SHEEPSFOOT ROLLERS OR OTHER APPROVED METHODS.
- THE CONTRACTOR SHALL APPLY DUST CONTROL MEASURES OVER EXPOSED SURFACES NOT INTENDED TO BE VEGETATED.
- THE CONTRACTOR SHALL INSTALL PERMANENT EROSION CONTROL MEASURES (I.E. CHECKDAMS, EROSION MATTING, STONE FILL FOR SLOPES AND DITCHES) IMMEDIATELY UPON COMPLETION OF GRADING.
- THE LOCATIONS OF THE VEHICLE TRACKING PADS (SEE TRAFFIC MANAGEMENT PLANS) ARE SUGGESTED ONLY. THE CONTRACTOR SHALL DETERMINE ACTUAL LOCATIONS OF VEHICLE TRACKING PADS NEEDED TO PERFORM THE WORK.
- SEE TRAFFIC MANAGEMENT PLANS FOR PROJECT PHASING AND THE LOCATION OF ALL STAGING AREAS.
- SEE THE EPSC NARRATIVE FOR ADDITIONAL REQUIREMENTS.



PROJECT NAME: RICHMOND
PROJECT NUMBER: STP 0284 (17)
FILE NAME: z97c186eccsblr.dgn PLOT DATE: 4/29/2013
PROJECT LEADER: ERIK ATKINS DRAWN BY: A.ACHARYA
DESIGNED BY: T.BIGELOW CHECKED BY: E.ATKINS
EPSC CONSTRUCTION SITE PLAN SHEET 1 SHEET 18 OF 133