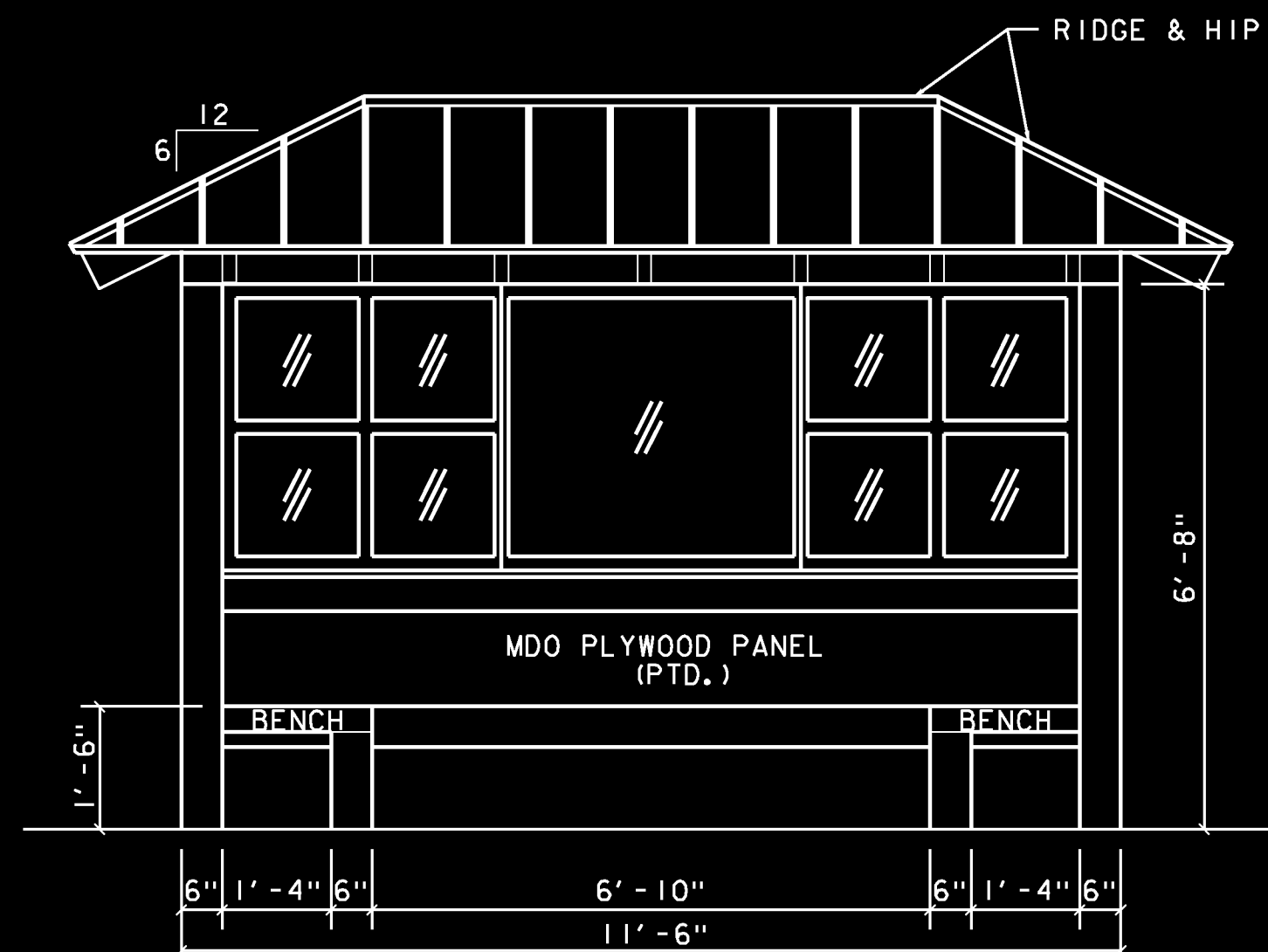
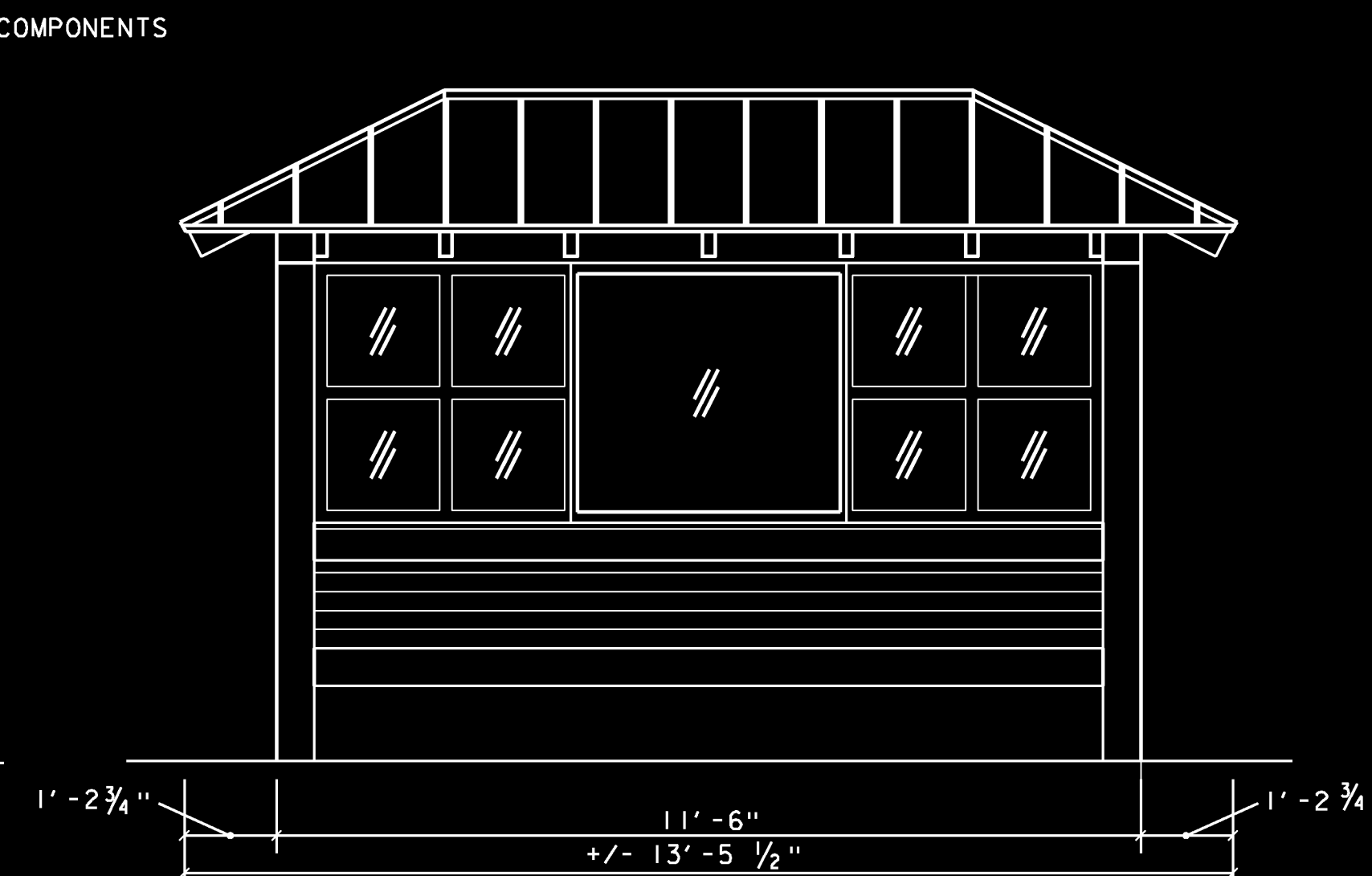


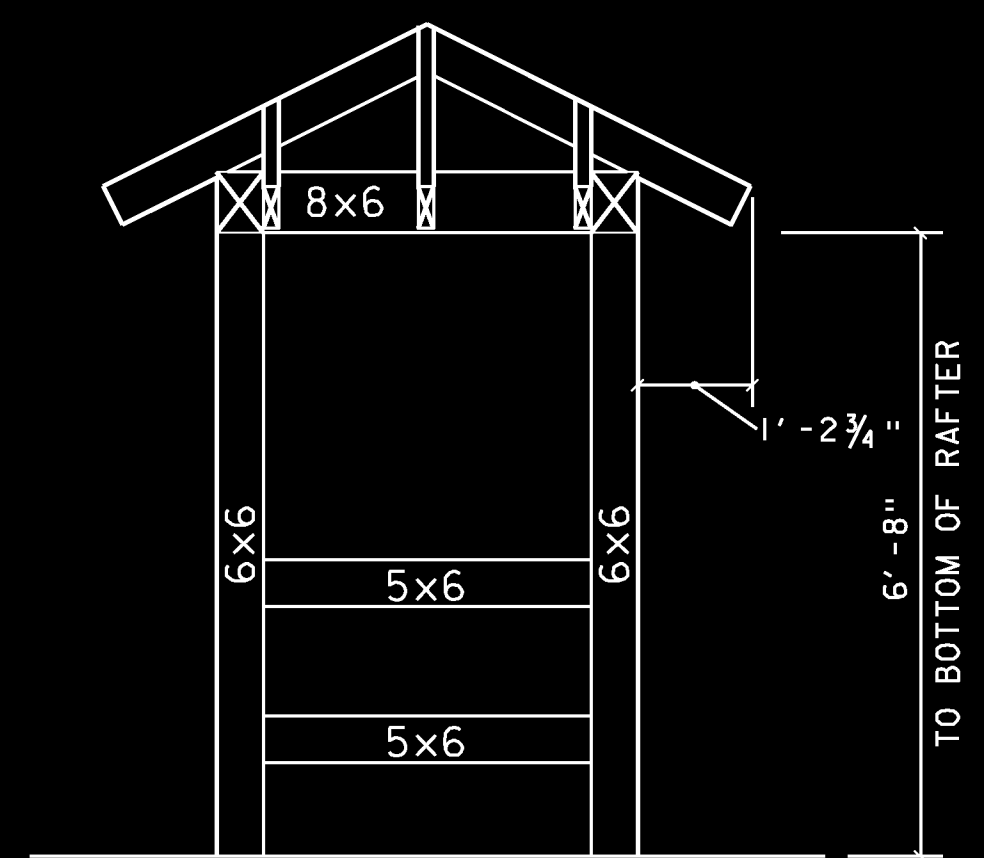
**1 END ELEVATION (TYP.)**  
SCALE: 1/2" = 1'-0"



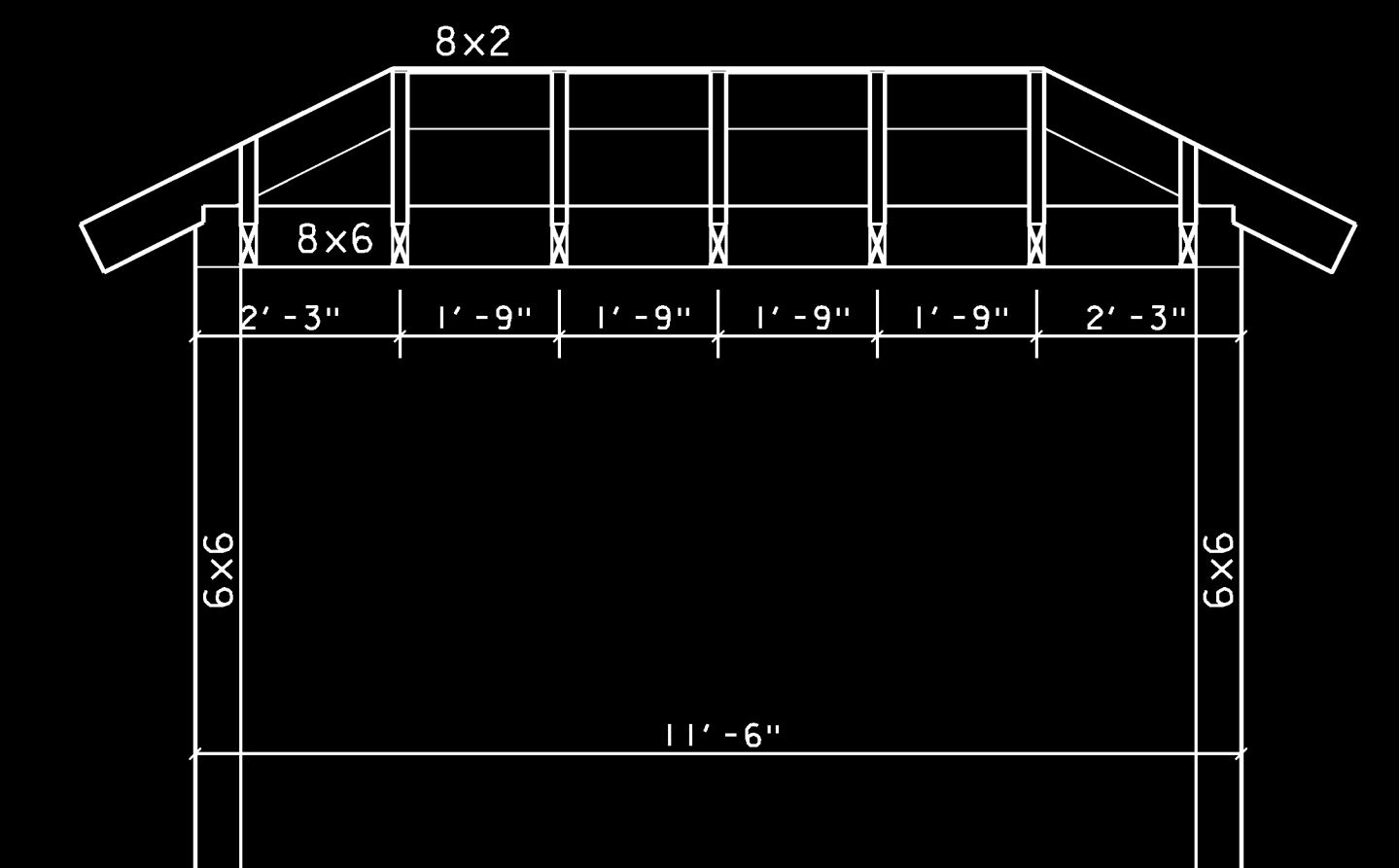
**2 FRONT/INTERIOR ELEVATION**  
SCALE: 1/2" = 1'-0"



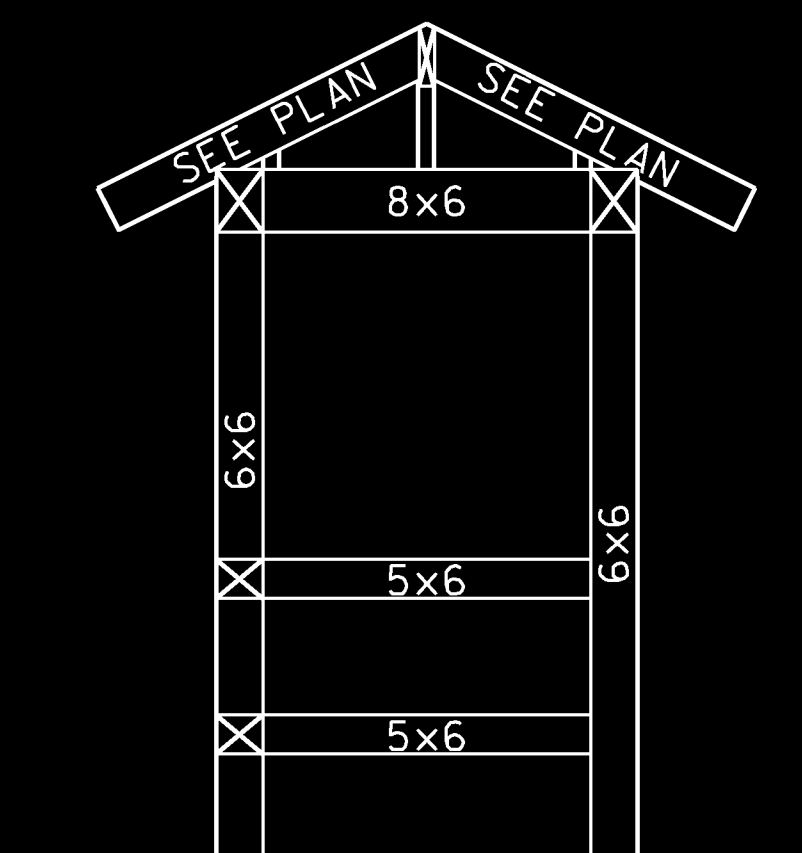
**3 REAR ELEVATION**  
SCALE: 1/2" = 1'-0"



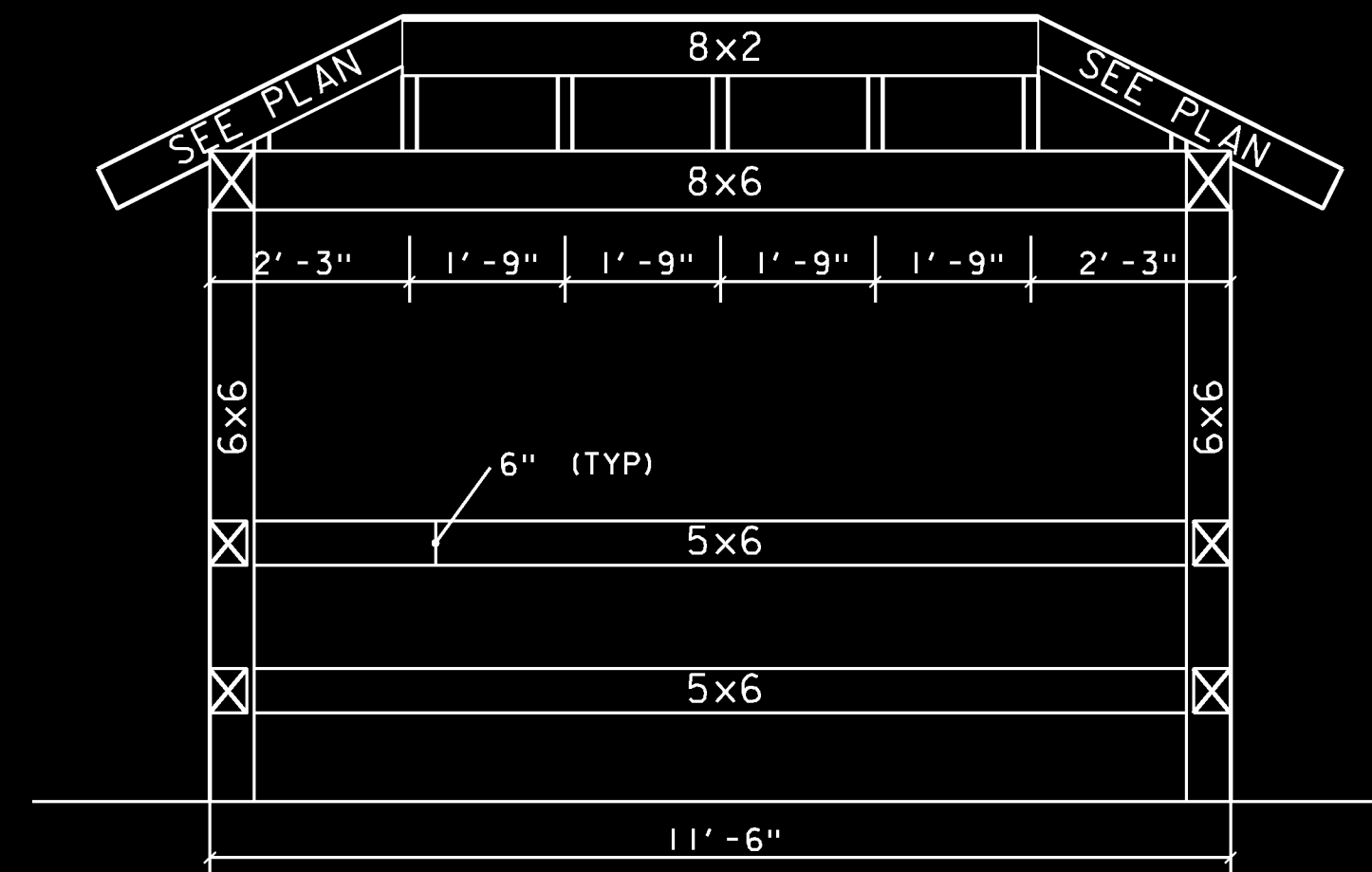
**4 END FRAMING - ELEVATION**  
SCALE: 1/2" = 1'-0"



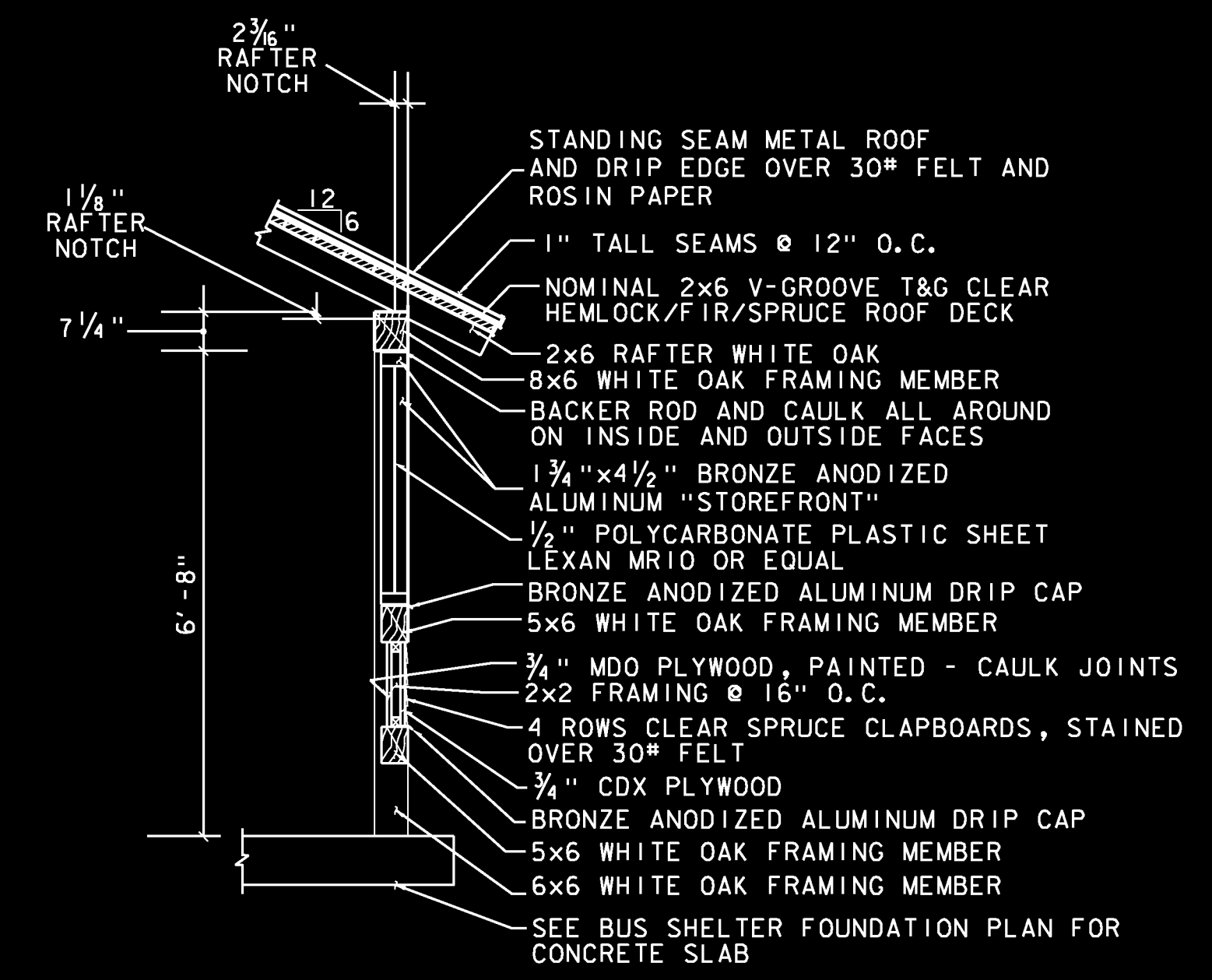
**5 FRONT/REAR FRAMING - ELEVATION**  
SCALE: 1/2" = 1'-0"



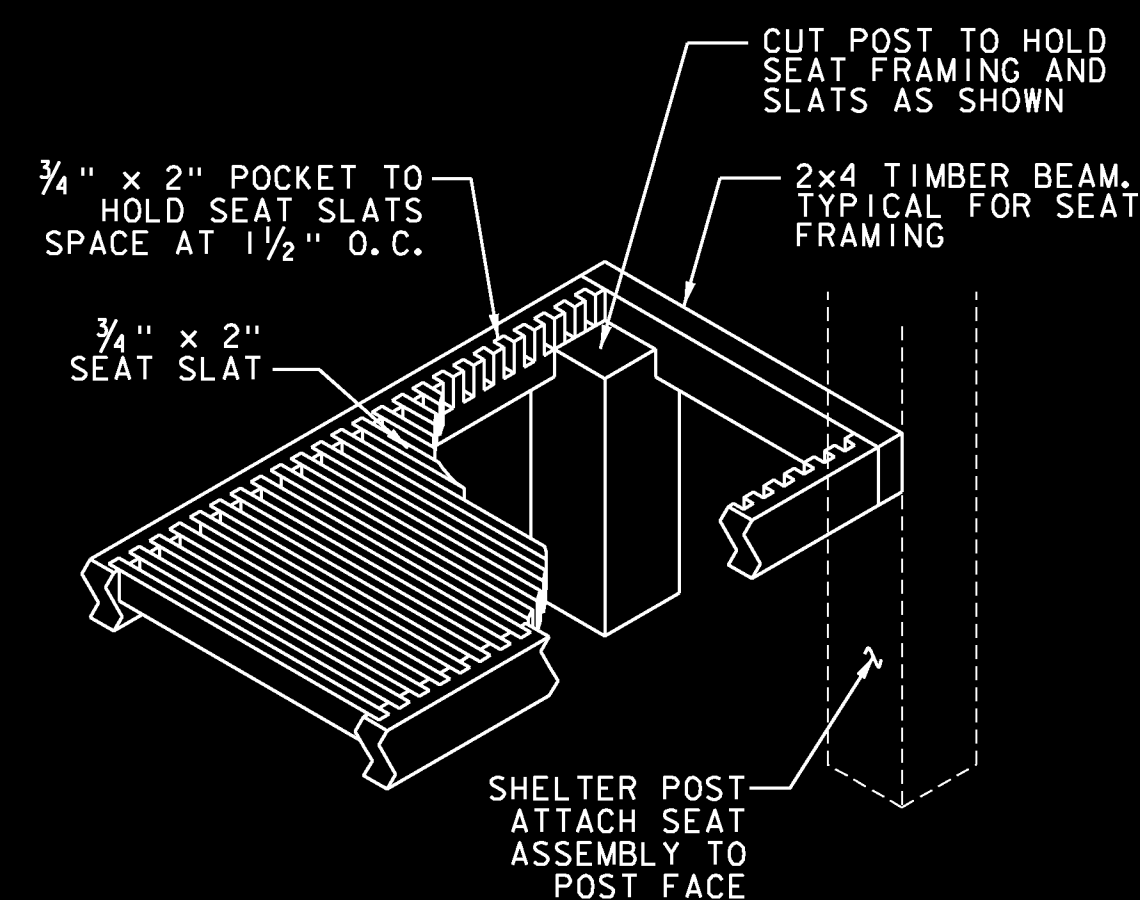
**6 END FRAMING - SECTION**  
SCALE: 1/2" = 1'-0"



**7 FRONT/REAR FRAMING - SECTION**  
SCALE: 1/2" = 1'-0"



**8 TYPICAL WALL SECTION**  
SCALE: 1/2" = 1'-0"



**9 DETAIL - BENCH FRAMING**  
NOT TO SCALE

- NOTES
1. JACK AND COMMON RAFTERS ARE 2x6.
  2. HIP RAFTERS ARE 2x7
  3. RIDGE BEAM IS 2x8

PROJECT NAME: RICHMOND  
PROJECT NUMBER: CMG PARK (31)

FILE NAME: z97cl86shelter.dgn PLOT DATE: 5/1/2013  
PROJECT LEADER: ERIK ATKINS DRAWN BY: N. BOSAN  
DESIGNED BY: C. NORET CHECKED BY: G. BOTAZZI  
BUS SHELTER PLAN, DTLS & ELEVS SHEET 1 SHEET 126 OF 133