

DEMOLITION AND DISPOSAL OF BUILDING

PNR 72+31.9 RT
**REMOVE EXISTING PAVEMENT
 (COMMON EXCAVATION)**

PNR 71+25.0 LT - PNR 76+04.3 LT
 US RTE 2 18+23.1 LT - PNR 76+04.3 RT
 PNR 72+55.6 RT - PNR 72+96.9 RT
 PNR 72+86.0 RT - PNR 75+79.6 RT

BITUMINOUS CRACK SEALING

PNR 70+50.0 - PNR 76+05.0
 (SEAL ALL CRACKS AS DIRECTED BY THE ENGINEER)

STONE FILL, TYPE I

PNR 72+19.8 RT - 73+40.5 RT LT
 PNR 76+17.5 LT/RT - 76+33.9 RT

STONE FILL, TYPE II

PNR 71+50.0 LT - 71+86.0 RT PNR 70+50.0 LT - 71+13.0 LT PNR 72+00.0 LT - 72+34.0 LT
 PNR 76+13.0 RT - 76+32.3 RT PNR 71+42.0 LT - 71+62.0 LT PNR 73+35.0 LT - 74+51.0 LT

VERTICAL GRANITE CURB

PNR 72+55.9 LT - PNR 72+96.9 LT
 PNR 73+06.6 RT - PNR 75+59.5 RT
 PNR 73+81.6 RT - PNR 75+09.9 RT

REMOVAL OF EXISTING CURB

PNR 71+22.5 LT - PNR 75+97.22 LT/RT

PORTLAND CEMENT CONCRETE SIDEWALK, 8 INCH

PNR 71+62.8 RT - PNR 72+45.4 RT
REMOVING AND RESETTING FENCE

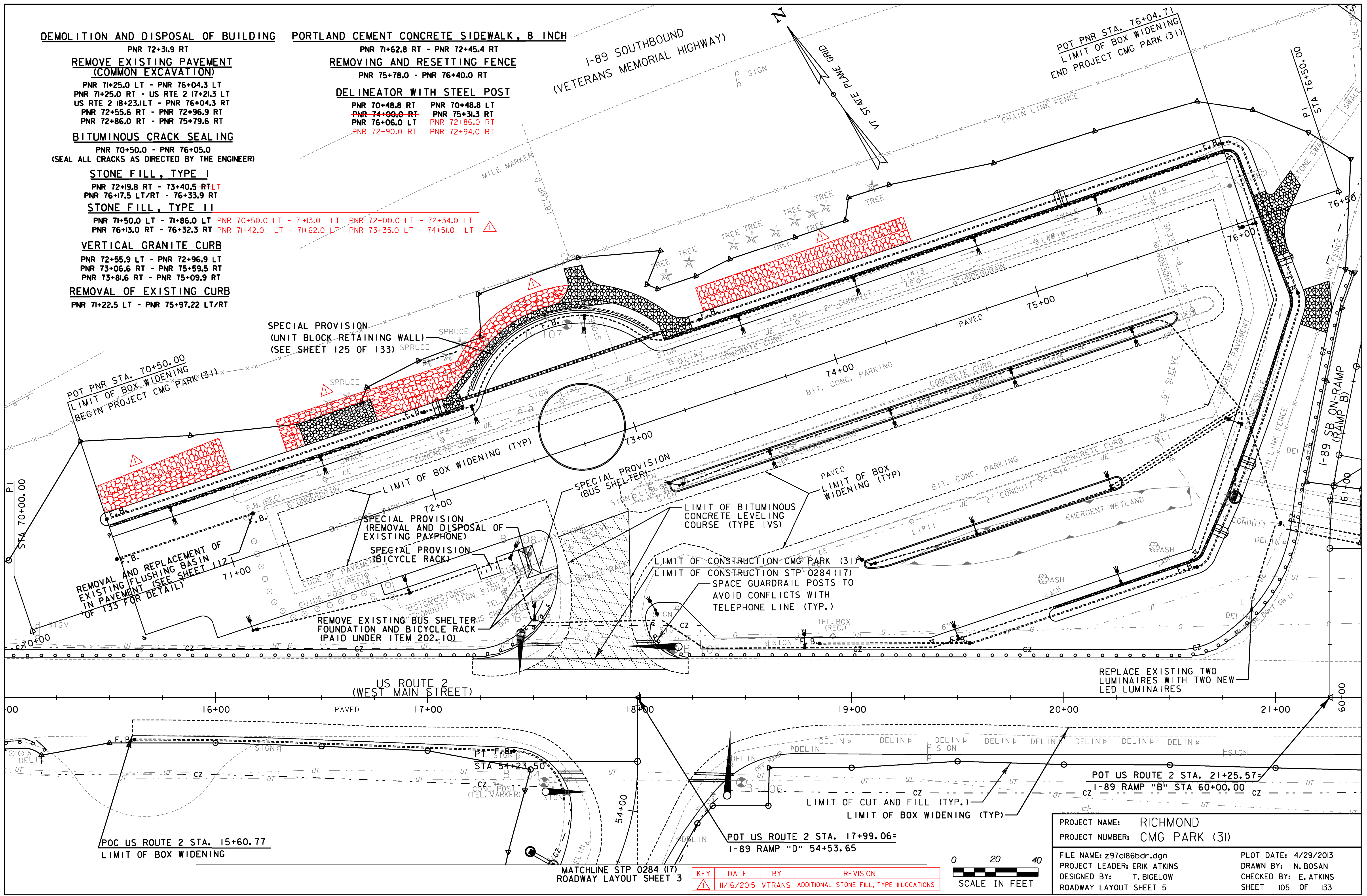
PNR 75+78.0 - PNR 76+40.0 RT

DELINEATOR WITH STEEL POST

PNR 70+48.8 RT PNR 70+48.8 LT
 PNR 74+00.0 RT PNR 75+31.3 RT
 PNR 76+06.0 LT PNR 72+86.0 RT
 PNR 72+90.0 RT PNR 72+94.0 RT

I-89 SOUTHBOUND
 (VETERANS MEMORIAL HIGHWAY)

POT PNR STA. 76+04.71
 LIMIT OF BOX WIDENING
 END PROJECT CMG PARK (31)



POT PNR STA. 70+50.00
 LIMIT OF BOX WIDENING
 BEGIN PROJECT CMG PARK (31)

REMOVAL AND REPLACEMENT OF
 EXISTING FLUSHING BASIN
 IN PAVEMENT (SEE SHEET 112
 OF 133 FOR DETAIL)

SPECIAL PROVISION
 (UNIT BLOCK RETAINING WALL)
 (SEE SHEET 125 OF 133)

SPECIAL PROVISION
 (REMOVAL AND DISPOSAL OF
 EXISTING PAYPHONE)
 SPECIAL PROVISION
 (BICYCLE RACK)

REMOVE EXISTING BUS SHELTER
 FOUNDATION AND BICYCLE RACK
 (PAID UNDER ITEM 202.10)

SPECIAL PROVISION
 (BUS SHELTER)

LIMIT OF CONSTRUCTION CMG PARK (31)
 LIMIT OF CONSTRUCTION STP 0284 (17)
 SPACE GUARDRAIL POSTS TO
 AVOID CONFLICTS WITH
 TELEPHONE LINE (TYP.)

REPLACE EXISTING TWO
 LUMINAIRES WITH TWO NEW
 LED LUMINAIRES

POC US ROUTE 2 STA. 15+60.77
 LIMIT OF BOX WIDENING

POT US ROUTE 2 STA. 17+99.06=
 I-89 RAMP "D" 54+53.65

POT US ROUTE 2 STA. 21+25.57=
 I-89 RAMP "B" STA 60+00.00

MATCHLINE STP 0284 (17)
 ROADWAY LAYOUT SHEET 3

KEY	DATE	BY	REVISION
▲	11/16/2015	VTRANS	ADDITIONAL STONE FILL, TYPE II LOCATIONS



PROJECT NAME: RICHMOND
 PROJECT NUMBER: CMG PARK (31)
 FILE NAME: z97cl86bdr.dgn
 PROJECT LEADER: ERIK ATKINS
 DESIGNED BY: T. BIGELOW
 ROADWAY LAYOUT SHEET 5
 PLOT DATE: 4/29/2013
 DRAWN BY: N. BOSAN
 CHECKED BY: E. ATKINS
 SHEET 105 OF 133