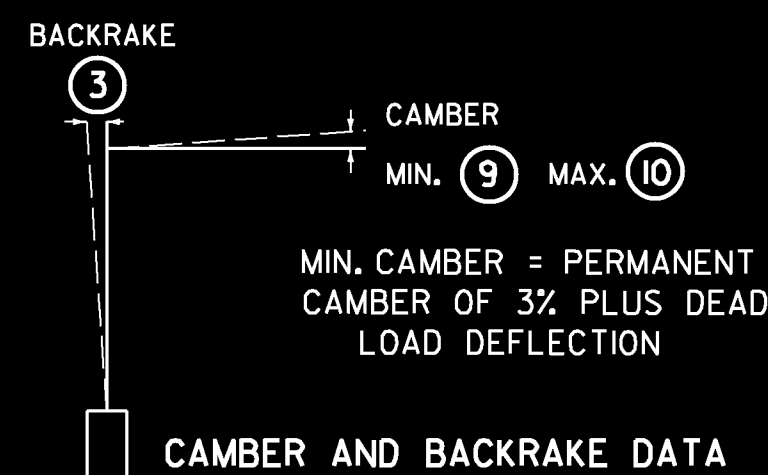
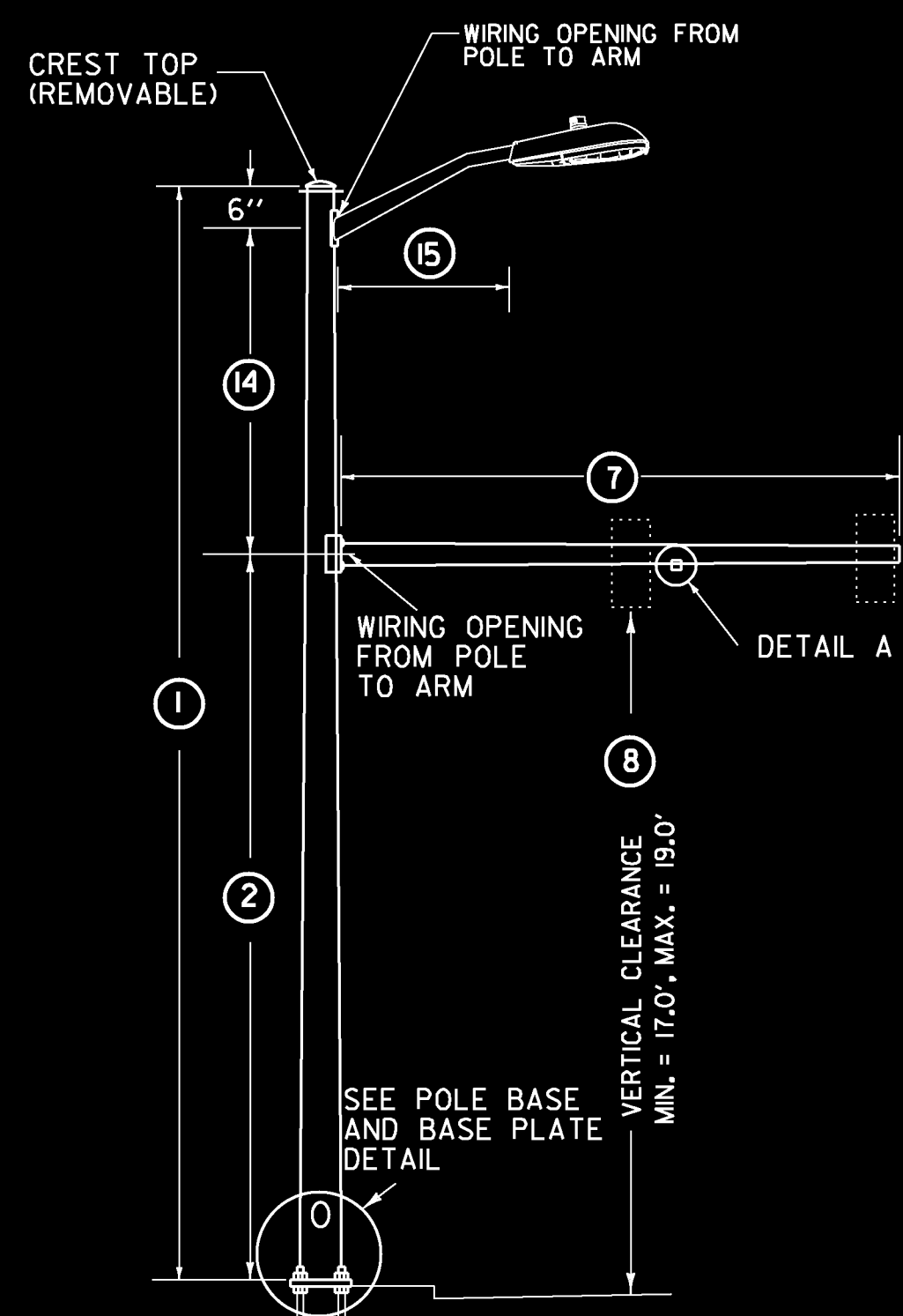


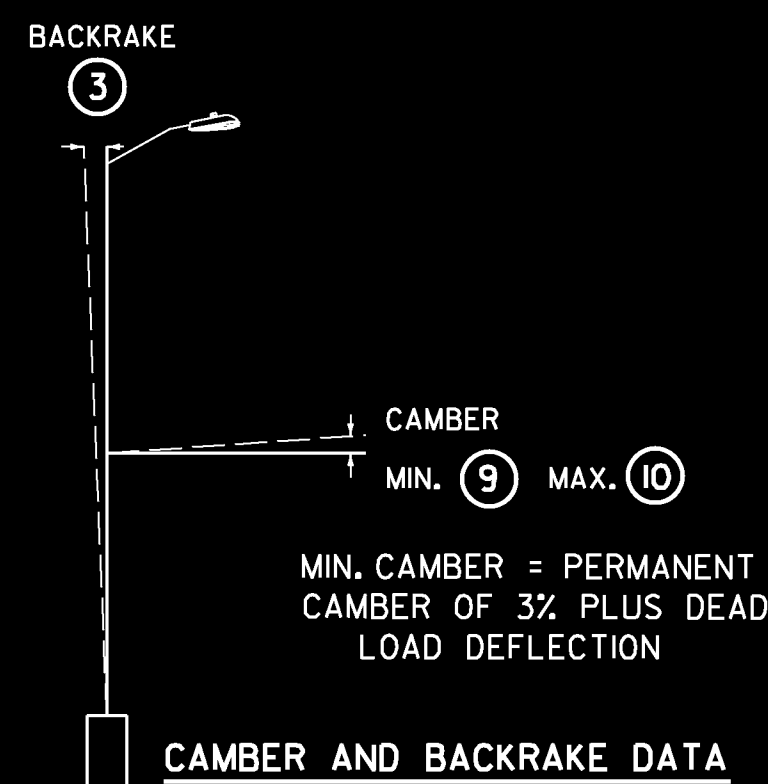
TYPE A



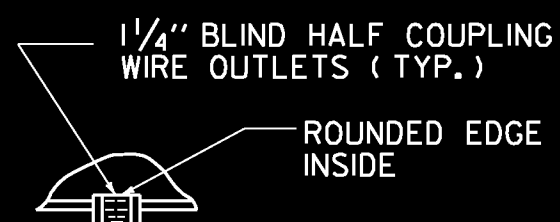
- POLE BASE DIAMETER ④
- POLE GAUGE ⑤
- POLE TAPER RATE ⑥
- ARM DIAMETER ⑪
- ARM GAUGE ⑫
- ARM TAPER RATE ⑬
- LUMINAIRE MOUNTING HEIGHT ABOVE ROADWAY ⑭



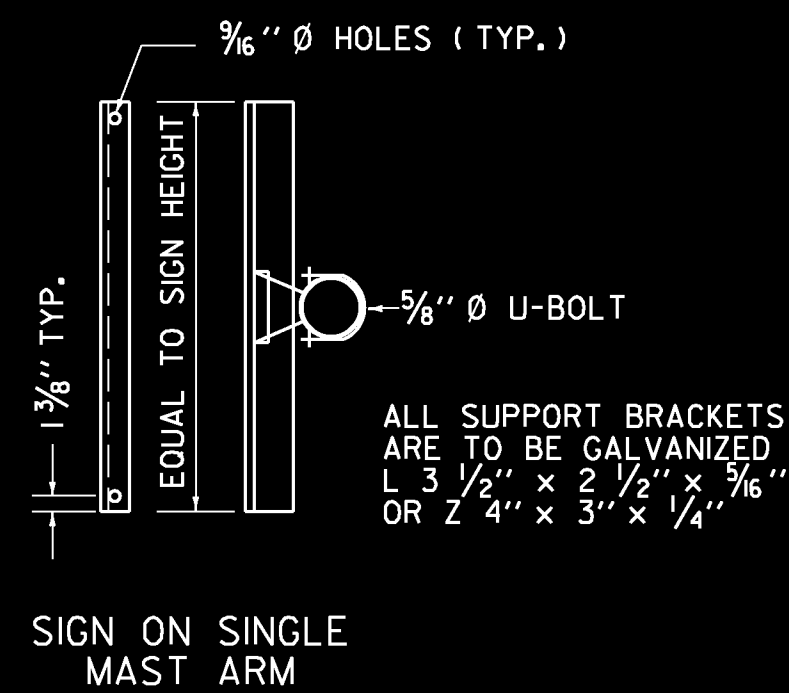
TYPE B



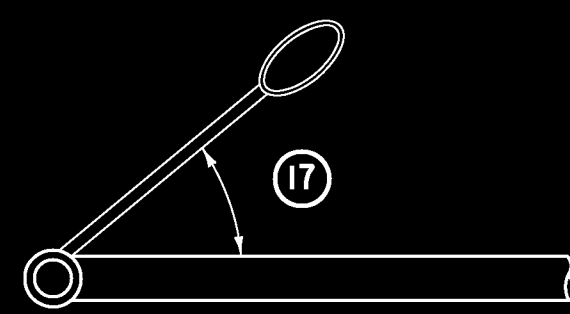
- POLE BASE DIAMETER ④
- POLE GAUGE ⑤
- POLE TAPER RATE ⑥
- ARM DIAMETER ⑪
- ARM GAUGE ⑫
- ARM TAPER RATE ⑬
- LUMINAIRE MOUNTING HEIGHT ABOVE ROADWAY ⑭



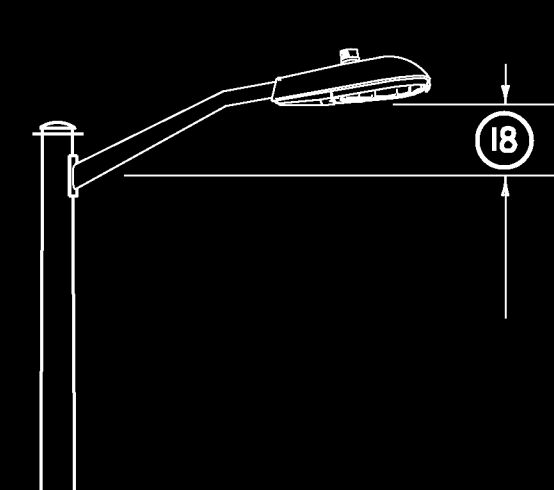
DETAIL A



SIGN BRACKET DETAILS

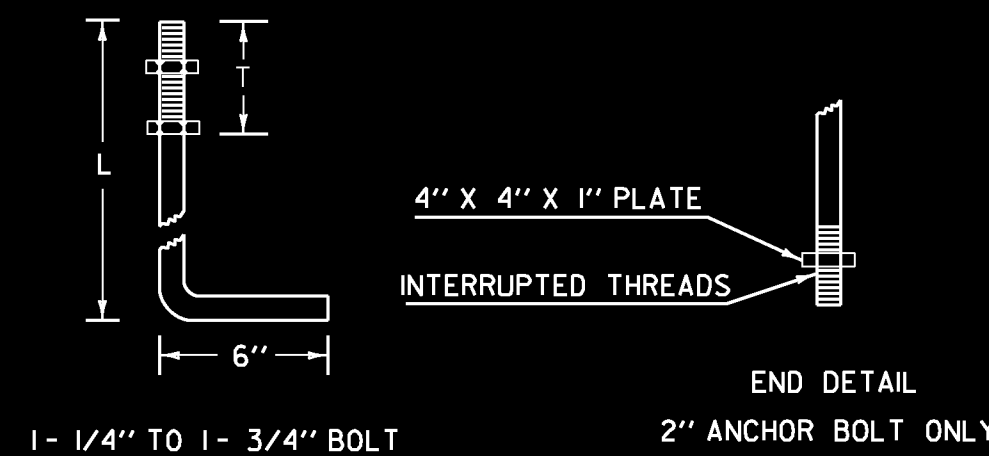


LUMINAIRE ORIENTATION

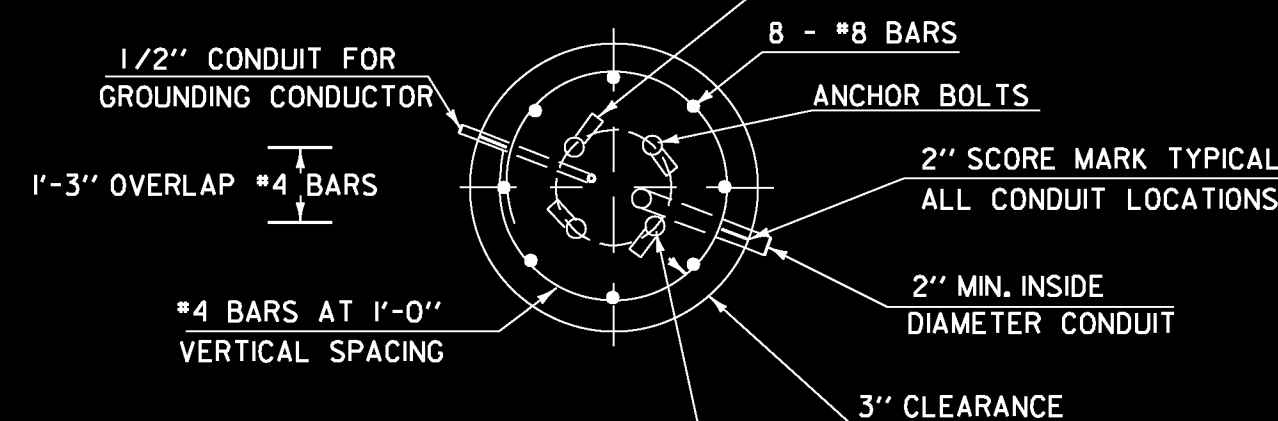


LUMINAIRE ARM RISE

ANCHOR BOLT DETAIL		
SIZE	L (IN)	T (IN)
1 - 1/4" X 48"	42	8
1 - 1/2" X 60"	54	9
1 - 3/4" X 90"	84	9
2" X 96"	96	9



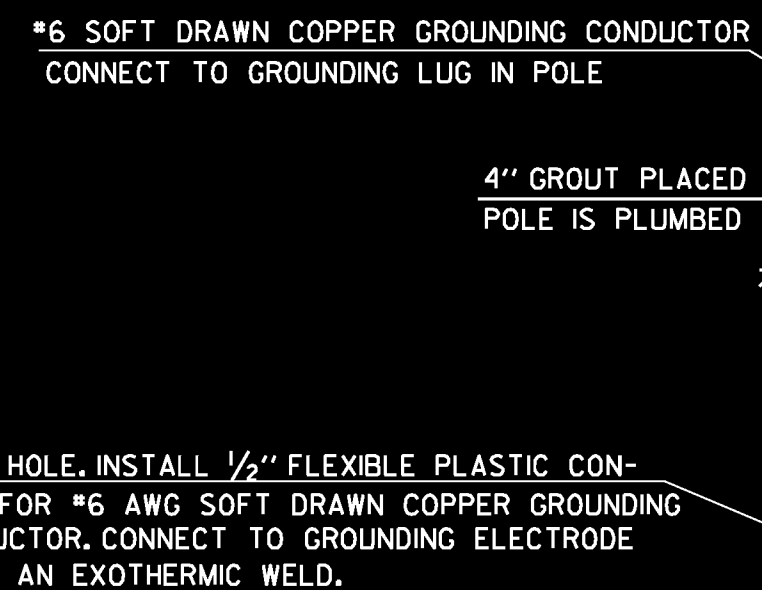
ANCHOR BOLT DETAIL



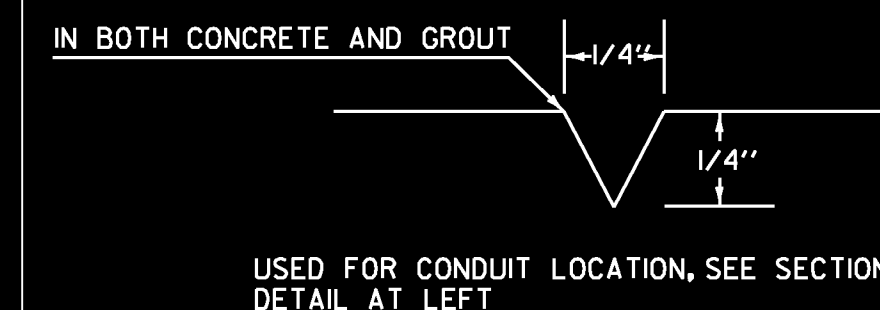
SECTION

CANTILEVER FOOTING DETAIL

NOTE: BORINGS FOR THE MAST ARMS WERE PERFORMED ON THE SAME DAY IN FEBRUARY 2012. SUFFICIENT TIME WAS NOT GIVEN TO ALLOW FOR STABILIZATION OF THE GROUNDWATER TABLE. THE MAST ARM FOUNDATION DESIGN SHALL ASSUME GROUNDWATER IS AT THE GROUND SURFACE. REFER TO THE GEOTECHNICAL OFFICE MEMORANDUM DATED FEBRUARY 29TH 2012 AND THE ADDENDUM DATED FEBRUARY 7TH 2013 FOR ADDITIONAL REQUIREMENTS.



ELEVATION



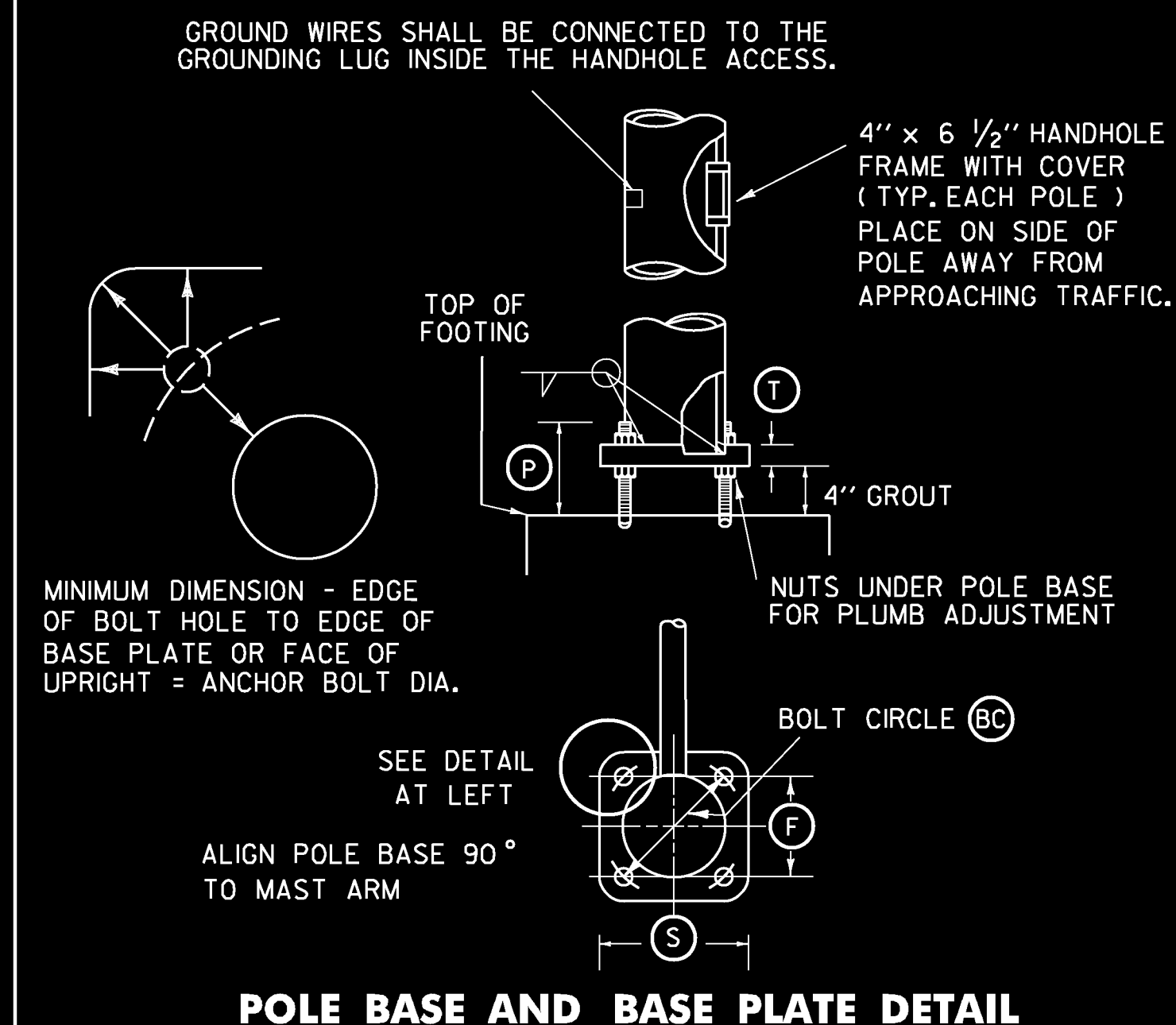
2" SCORE MARK DETAIL

SEE TRAFFIC SIGNAL DETAIL SHEETS 2 AND 3 FOR CROSS SECTIONS

		STRUCTURE DIMENSIONS																											
		POLE DATA						ARM DATA						LIGHTING DATA						FOOTING DATA		BASE PLATE / BOLT DATA							
POLE	TYPE	①	②	③	④	⑤	⑥	⑦	⑧	⑨	⑩	⑪	⑫	⑬	⑭	⑮	⑯	⑰	⑱	⑲	⑳	㉑	F	S	T	P	ANCHOR BOLT SIZE		
MP1A	A	20'	18'	TBDM	TBDM	TBDM	TBDM	15'	17'	3%	5%	TBDM	TBDM	TBDM	N/A	N/A	N/A	N/A	N/A	TBDM	TBDM	TBDM	TBDM	TBDM	TBDM	TBDM	TBDM	TBDM	
MP1B	A	20'	18'	TBDM	TBDM	TBDM	TBDM	15'	17'	3%	5%	TBDM	TBDM	TBDM	N/A	N/A	N/A	N/A	N/A	TBDM	TBDM	TBDM	TBDM	TBDM	TBDM	TBDM	TBDM	TBDM	
MP1C	A	20'	18'	TBDM	TBDM	TBDM	TBDM	15'	17'	3%	5%	TBDM	TBDM	TBDM	N/A	N/A	N/A	N/A	N/A	TBDM	TBDM	TBDM	TBDM	TBDM	TBDM	TBDM	TBDM	TBDM	
MP2A	B	28'-6"	18'	TBDM	TBDM	TBDM	TBDM	20'	17'	3%	5%	TBDM	TBDM	TBDM	10'	TBDM	TBDM	TBDM	TBDM	TBDM	TBDM	TBDM	TBDM	TBDM	TBDM	TBDM	TBDM	TBDM	
MP2B	B	28'-6"	18'	TBDM	TBDM	TBDM	TBDM	20'	17'	3%	5%	TBDM	TBDM	TBDM	10'	TBDM	TBDM	TBDM	TBDM	TBDM	TBDM	TBDM	TBDM	TBDM	TBDM	TBDM	TBDM	TBDM	
MP2C	B	28'-6"	18'	TBDM	TBDM	TBDM	TBDM	25'	17'	3%	5%	TBDM	TBDM	TBDM	10'	TBDM	TBDM	TBDM	TBDM	TBDM	TBDM	TBDM	TBDM	TBDM	TBDM	TBDM	TBDM	TBDM	
MP2D	B	28'-6"	18'	TBDM	TBDM	TBDM	TBDM	30'	17'	3%	5%	TBDM	TBDM	TBDM	10'	TBDM	TBDM	TBDM	TBDM	TBDM	TBDM	TBDM	TBDM	TBDM	TBDM	TBDM	TBDM	TBDM	

TBDM = TO BE DETERMINED BY MANUFACTURER

NOTE: DETAILS NOT TO SCALE



POLE BASE AND BASE PLATE DETAIL

PROJECT NAME: RICHMOND
PROJECT NUMBER: STP 0284 (17)

FILE NAME: z97cl86trfbd2.dgn
PROJECT LEADER: JEFFREY MAXTUTIS
DESIGNED BY: J. SOBEL
SIGNAL MAST ARM DETAIL SHEET

PLOT DATE: 4/29/2013
DRAWN BY: Y.CAO/L.ALMY
CHECKED BY: D.FLYNN
SHEET 74 OF 133