

WIRED CONDUIT 2" (PVC)

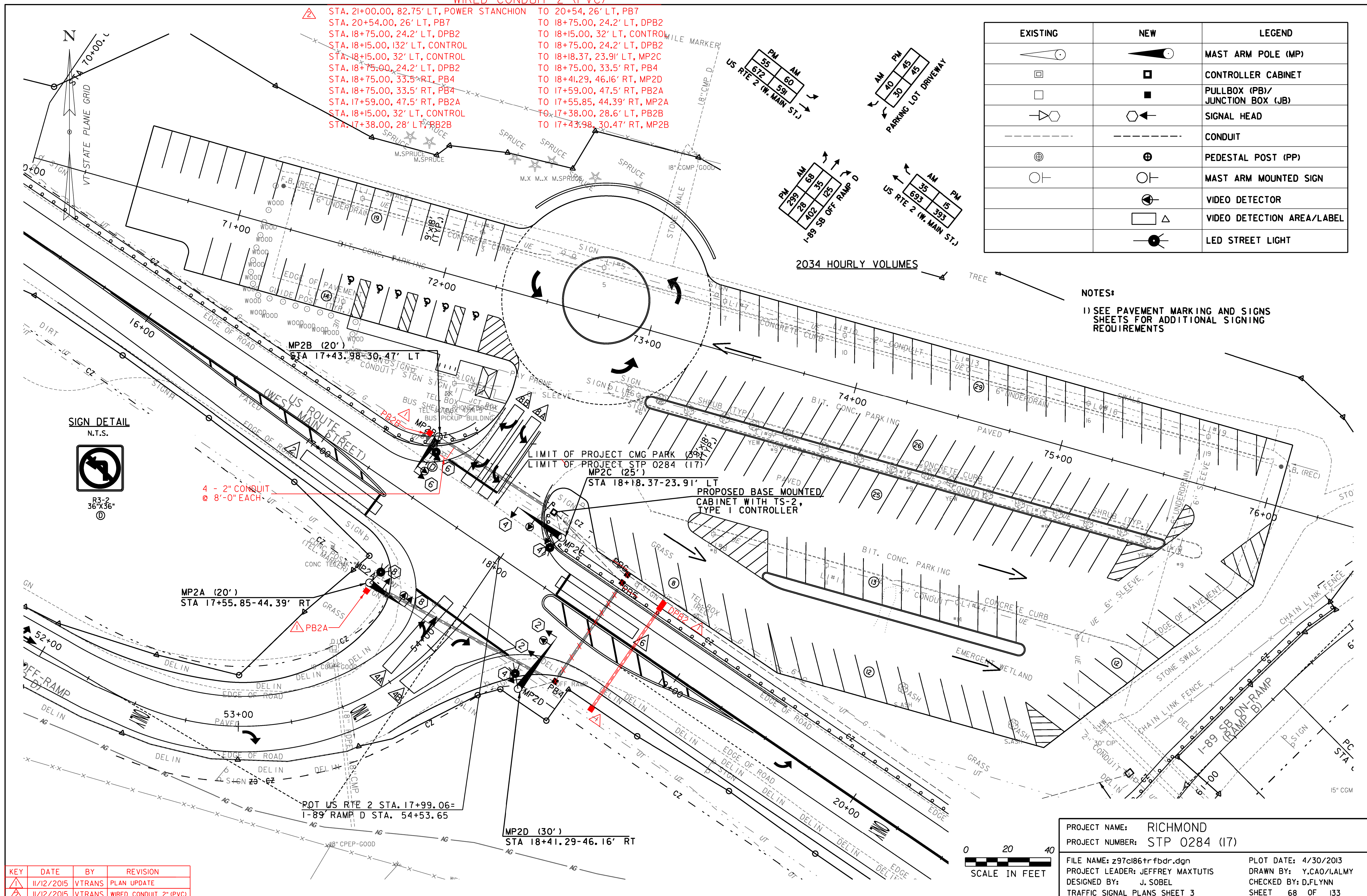
- △ STA. 21+00.00, 82.75' LT, POWER STANCHION TO 20+54.26' LT, PB7
- △ STA. 20+54.00, 26' LT, PB7
- △ STA. 18+75.00, 24.2' LT, DPB2 TO 18+75.00, 32' LT, CONTROL
- △ STA. 18+15.00, 132' LT, CONTROL TO 18+75.00, 24.2' LT, DPB2
- △ STA. 18+15.00, 32' LT, CONTROL TO 18+18.37, 23.91' LT, MP2C
- △ STA. 18+75.00, 24.2' LT, DPB2 TO 18+75.00, 33.5' RT, PB4
- △ STA. 18+75.00, 33.5' RT, PB4 TO 18+41.29, 46.16' RT, MP2D
- △ STA. 18+75.00, 33.5' RT, PB4 TO 17+59.00, 47.5' RT, PB2A
- △ STA. 17+59.00, 47.5' RT, PB2A TO 17+55.85, 44.39' RT, MP2A
- △ STA. 18+15.00, 32' LT, CONTROL TO 17+38.00, 28.6' LT, PB2B
- △ STA. 17+38.00, 28' LT, PB2B TO 17+43.98, 30.47' RT, MP2B

EXISTING	NEW	LEGEND
		MAST ARM POLE (MP)
		CONTROLLER CABINET
		PULLBOX (PB)/ JUNCTION BOX (JB)
		SIGNAL HEAD
		CONDUIT
		PEDESTAL POST (PP)
		MAST ARM MOUNTED SIGN
		VIDEO DETECTOR
		VIDEO DETECTION AREA/LABEL
		LED STREET LIGHT

NOTES:

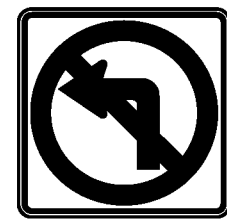
- 1) SEE PAVEMENT MARKING AND SIGNS SHEETS FOR ADDITIONAL SIGNING REQUIREMENTS

2034 HOURLY VOLUMES



SIGN DETAIL

N.T.S.



R3-2
36"X36"

4 - 2" CONDUIT
@ 8'-0" EACH

LIMIT OF PROJECT CMG PARK (17)
LIMIT OF PROJECT STP 0284 (17)
MP2C (25')

STA 18+18.37-23.91' LT
PROPOSED BASE MOUNTED
CABINET WITH TS-2,
TYPE I CONTROLLER

MP2A (20')
STA 17+55.85-44.39' RT

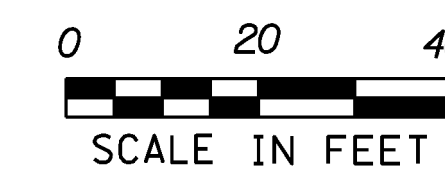
MP2D (30')
STA 18+41.29-46.16' RT

ROT US RTE 2 STA. 17+99.06=
1-89 RAMP D STA. 54+53.65

PROJECT NAME: RICHMOND
PROJECT NUMBER: STP 0284 (17)

FILE NAME: z97c186trfbdr.dgn
PROJECT LEADER: JEFFREY MAXTUTIS
DESIGNED BY: J. SOBEL
TRAFFIC SIGNAL PLANS SHEET 3

PLOT DATE: 4/30/2013
DRAWN BY: Y.CAO/I.ALMY
CHECKED BY: D.FLYNN
SHEET 68 OF 133



KEY	DATE	BY	REVISION
△	11/12/2015	VTRANS	PLAN UPDATE
△	11/12/2015	VTRANS	WIRED CONDUIT 2" (PVC)