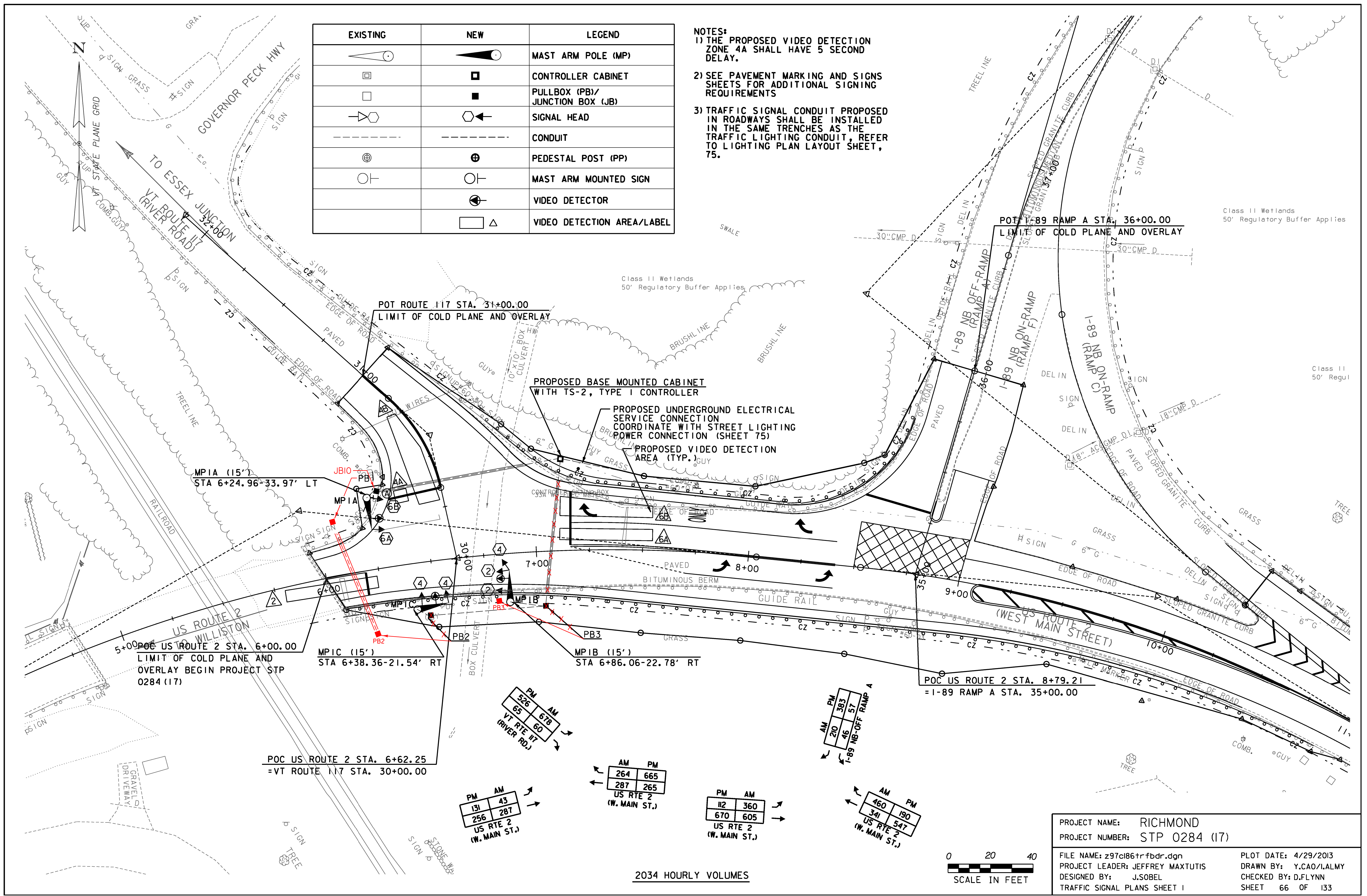


EXISTING	NEW	LEGEND
		MAST ARM POLE (MP)
		CONTROLLER CABINET
		PULLBOX (PB)/ JUNCTION BOX (JB)
		SIGNAL HEAD
		CONDUIT
		PEDESTAL POST (PP)
		MAST ARM MOUNTED SIGN
		VIDEO DETECTOR
		VIDEO DETECTION AREA/LABEL

- NOTES:**
- 1) THE PROPOSED VIDEO DETECTION ZONE 4A SHALL HAVE 5 SECOND DELAY.
  - 2) SEE PAVEMENT MARKING AND SIGNS SHEETS FOR ADDITIONAL SIGNING REQUIREMENTS
  - 3) TRAFFIC SIGNAL CONDUIT PROPOSED IN ROADWAYS SHALL BE INSTALLED IN THE SAME TRENCHES AS THE TRAFFIC LIGHTING CONDUIT, REFER TO LIGHTING PLAN LAYOUT SHEET, 75.



PROJECT NAME: RICHMOND  
PROJECT NUMBER: STP 0284 (17)  
FILE NAME: z97cl86trfbdr.dgn  
PROJECT LEADER: JEFFREY MAXTUTIS  
DESIGNED BY: J.SOBEL  
TRAFFIC SIGNAL PLANS SHEET 1  
PLOT DATE: 4/29/2013  
DRAWN BY: Y.CAO/LALMY  
CHECKED BY: D.FLYNN  
SHEET 66 OF 133

2034 HOURLY VOLUMES

