

TEMPORARY AND DURABLE 100 mm YELLOW LINE

STA 0+900 TO I+595 SOLID LT&RT
 STA I+107 DOUBLE SOLID RT
 (WITH CENTERLINE BREAKS FOR TOWN HIGHWAYS)

TEMPORARY AND DURABLE 100 mm WHITE LINE

STA 0+900 TO I+595 SOLID LT&RT
 (WITH EDGE LINE BREAKS FOR TOWN HIGHWAYS)

REMOVING SIGNS

3

REMOVAL AND DISPOSAL OF GUARD RAIL

STA I+175 TO I+184 LT
 STA I+176 TO I+184 RT
 STA I+191 TO I+195 LT
 STA I+191 TO I+207 RT
 STA I+440 TO I+470 LT
 STA I+440 TO I+470 RT

STEEL BEAM GUARD RAIL

STA I+199 TO I+206 RT
 STA I+184 TO I+191 RT
 STA I+440 TO I+470 LT
 STA I+440 TO I+470 RT

MODIFIED ECCENTRIC LOADER TERMINAL

STA 0+998 TO I+009 LT

TEMPORARY AND DURABLE 600 mm STOP BAR

STA I+107 RT CARY RD

TEMPORARY AND DURABLE LETTER OR SYMBOL

STA I+107 RT "STOP"

REMOVAL OF BRIDGE RAILING

STA I+184 TO I+191 LT&RT

ANCHOR FOR GUARD RAIL

✓ STA I+175 LT
 ✓ STA I+176 RT
 ✓ STA I+195 LT
 ✓ STA I+206 RT
 ✓ STA I+440 LT
 ✓ STA I+440 RT
 ✓ STA I+470 LT
 ✓ STA I+470 RT

H.D. STEEL BEAM GUARD RAIL

STA I+175 TO I+182.5 LT
 STA I+176 TO I+183.5 RT
 STA I+190 TO I+195 LT
 STA I+191 TO I+199 RT

BRIDGE RAILING - H.D. STEEL BEAM/CURB MOUNTED

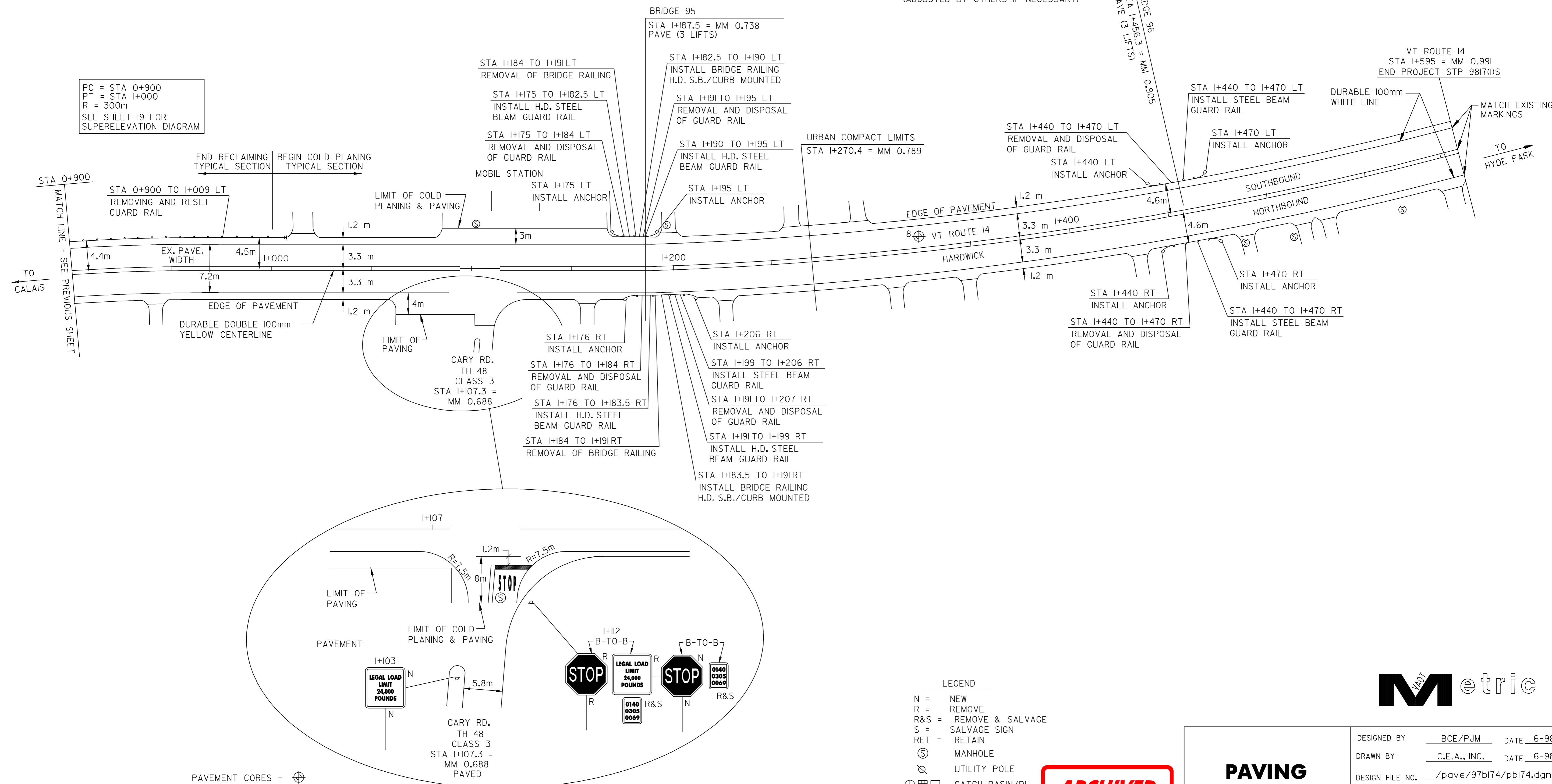
STA I+182.5 TO I+190 LT
 STA I+183.5 TO I+191 RT

REMOVING AND RESET GUARD RAIL

STA 0+900 TO I+009 LT
 O+998

ADJUST ELEVATION OF SEWER MANHOLE

STA I+102 LT
 STA I+117 RT
 (ADJUSTED BY OTHERS IF NECESSARY)



PC = STA 0+900
 PT = STA I+000
 R = 300m
 SEE SHEET 19 FOR SUPERELEVATION DIAGRAM

TO CALAIS
 MATCH LINE - SEE PREVIOUS SHEET

TO HYDE PARK

PAVEMENT CORES -

#	TOTAL DEPTH (mm)	PCC	COMMENTS
8	215	NO	215 SOLID BOTTOM STRIPPED

DATUM

VERTICAL	N/A
HORIZONTAL	N/A

- LEGEND**
- N = NEW
 - R = REMOVE
 - R&S = REMOVE & SALVAGE
 - S = SALVAGE SIGN
 - RET = RETAIN
 - ⊙ = MANHOLE
 - ⊗ = UTILITY POLE
 - ⊠ = CATCH BASIN/DI
 - ⊥ = MARKER POST
 - ⊥ = DRIVE

ARCHIVED
IN DPR

**PAVING
PROJECT
LAYOUT #9**



DESIGNED BY	BCE/PJM	DATE	6-98
DRAWN BY	C.E.A., INC.	DATE	6-98
DESIGN FILE NO.	/pave/97bl74/pbl74.dgn		
PRF FILE	pbl74lo9.i	DATE PLOTTED	21-MAR-2008 16:5
PROJ. NAME	WOODBURY - HARDWICK		
PROJ. NO.	STP 9817(1)S		
SHEET	17	OF	25 SHEETS