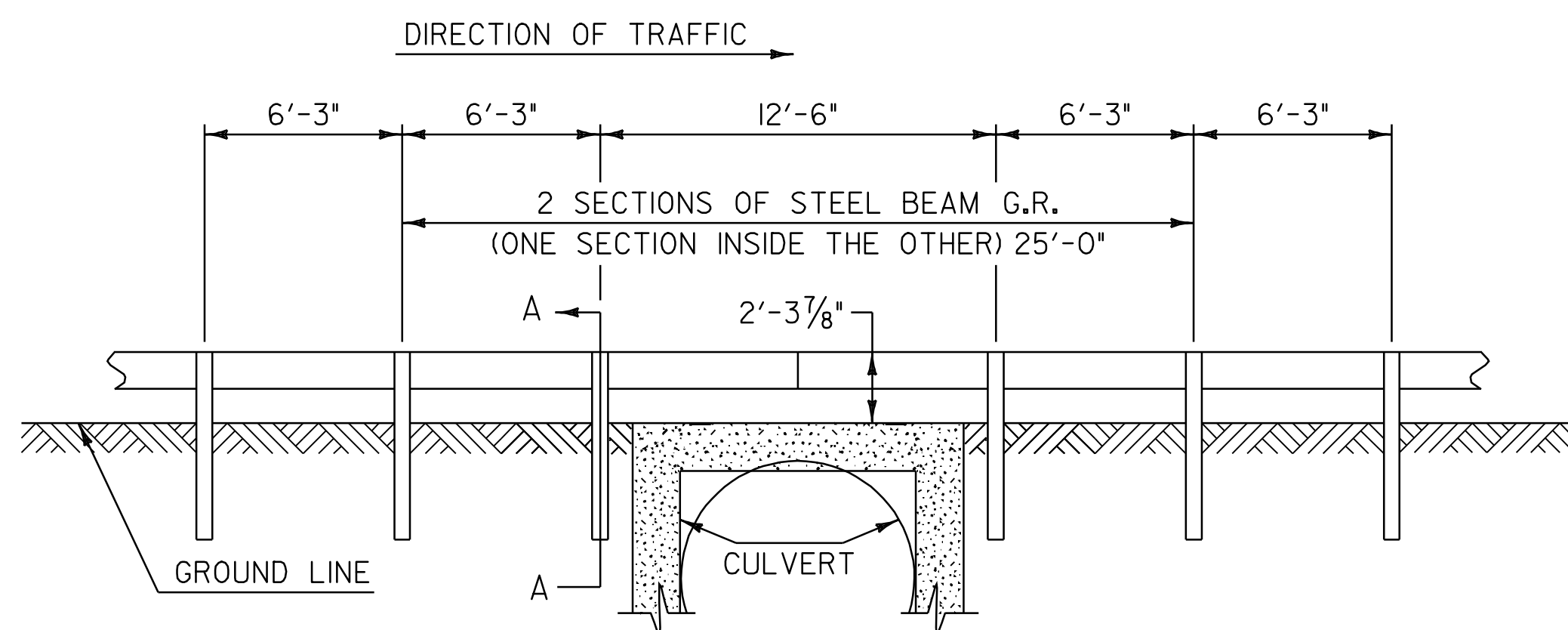


DETAIL A
N.T.S.

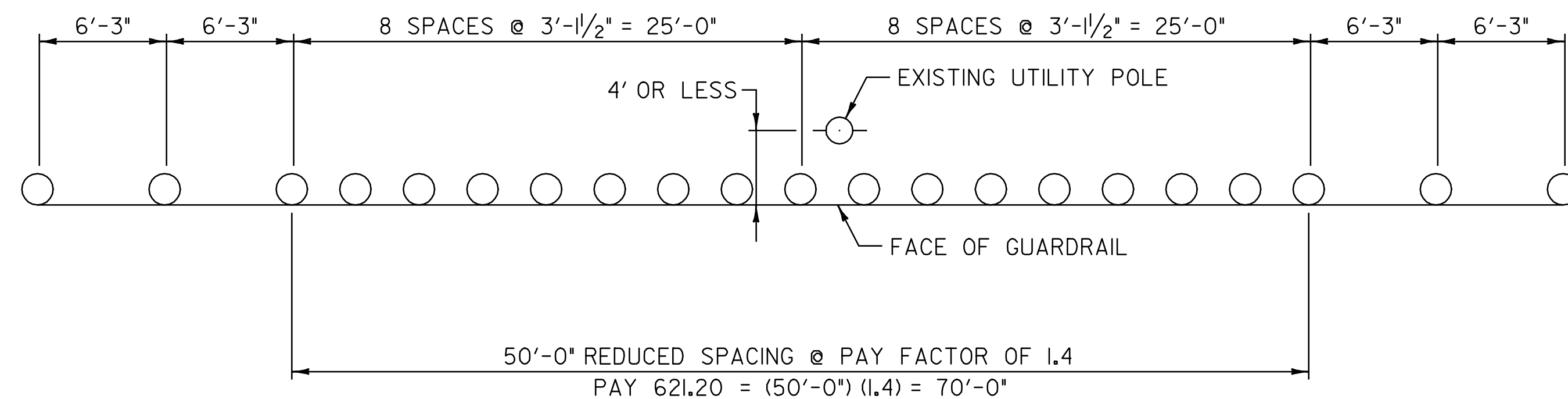
NOTES

1. SEE STANDARD G-1 FOR STEEL BEAM GUARDRAIL DETAILS.
2. THIS WORK SHALL BE PAID UNDER ITEM 621.20 STEEL BEAM GUARDRAIL (GALVANIZED) AT A PAY FACTOR OF 1.0.
3. THIS DETAIL TO BE USED AS INDICATED ON THE ITEM DETAIL SUMMARY SHEETS OR AS DIRECTED BY THE RESIDENT ENGINEER.



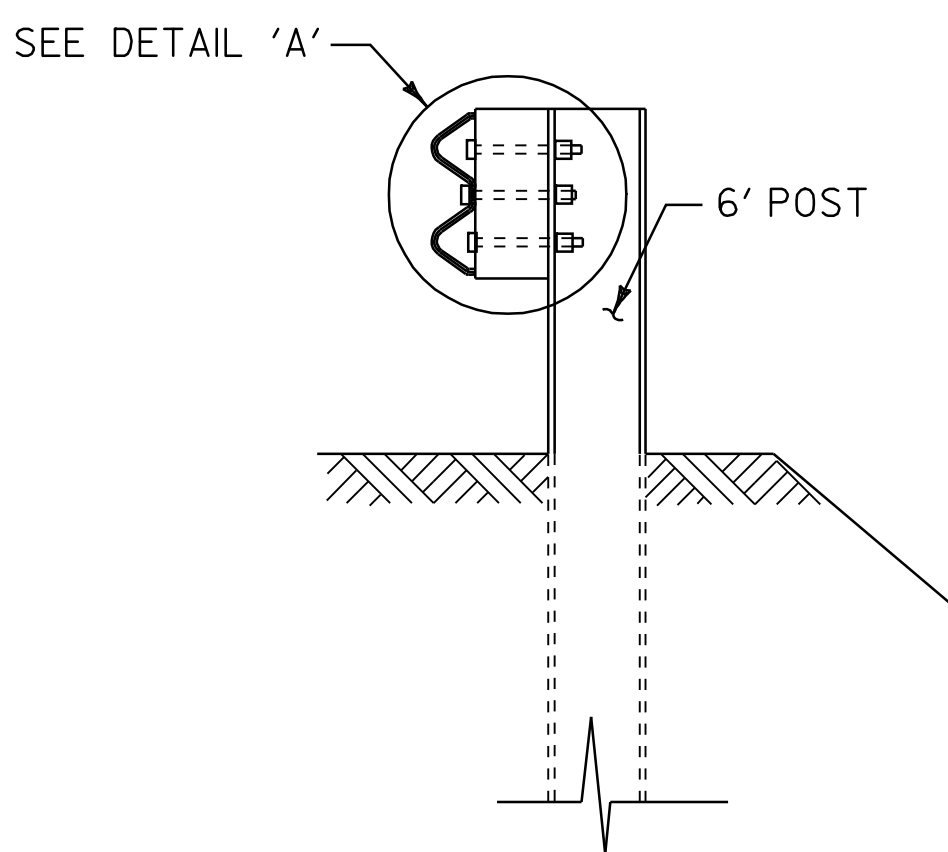
**STEEL BEAM GUARDRAIL
AT SMALL CULVERTS DETAIL**
N.T.S.

BR 130
U.S. ROUTE 7 NEW HAVEN STA. 68+37.60 LT & RT

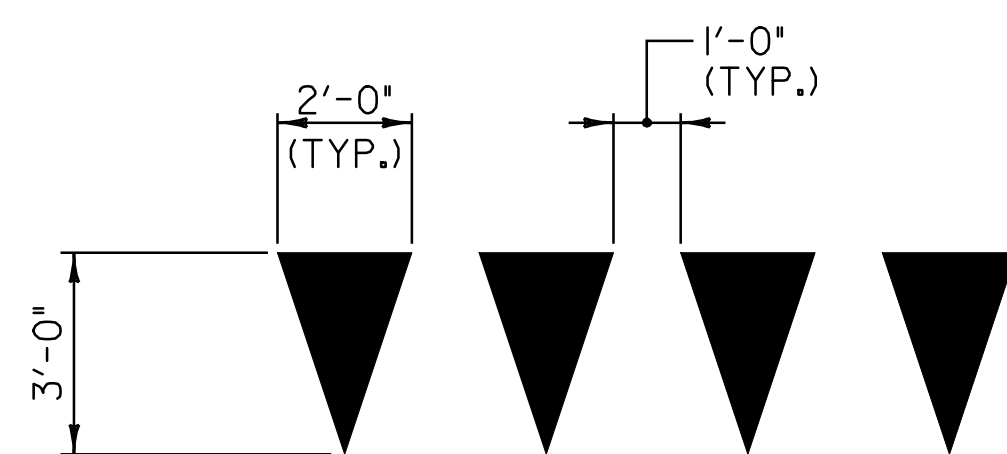


**STEEL BEAM GUARDRAIL POST SPACING
AT UTILITY POLE DETAIL**
N.T.S.

U.S. ROUTE 7 MIDDLEBURY STA. 321+88.0 LT
U.S. ROUTE 7 MIDDLEBURY STA. 324+03.0 LT



SECTION A-A
N.T.S.



YIELD LINE DETAILS
N.T.S.

NOTE:

1. EACH TRIANGLE SHALL BE PAID AS ONE EACH UNDER ITEM 646.50 DURABLE LETTER OR SYMBOL (THERMOPLASTIC).

**MISCELLANEOUS
DETAIL
SHEET**

PROJECT NAME: MIDDLEBURY - NEW HAVEN
PROJECT NUMBER: NH 9813(1)S

FILE NAME: p97bl66.dgn
PROJECT LEADER: D.E.G.
DESIGNED BY: J.S.P.
IPARM FILE: pbl66md.i

PLOT DATE: \$DATE\$
DRAWN BY: C.A.K.
CHECKED BY: D.W.E.
SHEET 62 OF 63