

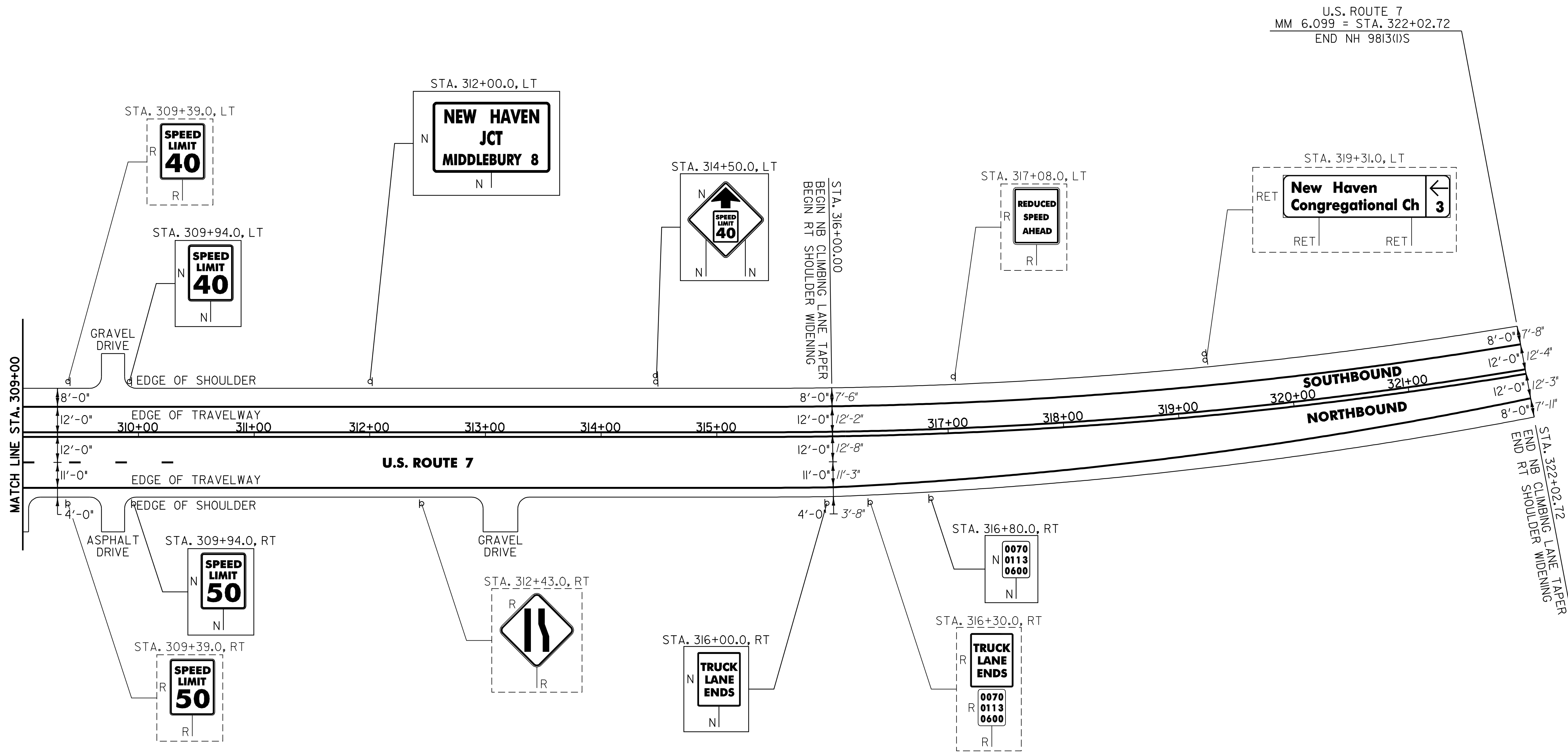
646.40 DURABLE 4" WHITE LINE (THERMOPLASTIC)
 (ALL LINES WILL INCLUDE EDGE LINE BREAKS AND
 RADIUS FOR TOWN HIGHWAYS)

NEW HAVEN:
 STA. 309+00.0 - STA. 322+02.72 LT & RT
 STA. 309+00.0 - STA. 310+50.0 DASHED RT

646.41 DURABLE 4" YELLOW LINE (THERMOPLASTIC)
 (ALL LINES WILL INCLUDE C/L BREAKS FOR
 TOWN HIGHWAYS) S=SOLID, D=DASHED

NEW HAVEN:
 STA. 309+00.0 - STA. 322+02.72 LT @ RT
 S - S

675.50 REMOVING SIGNS
 AS SHOWN - 6



U.S. ROUTE 7
 MM 6.099 = STA. 322+02.72
 END NH 9813(1)S

STA. 322+02.72
 END NB CLIMBING LANE TAPER
 END RT SHOULDER WIDENING

NOT TO SCALE

SIGN LEGEND
 R = REMOVE
 S = SALVAGE
 N = NEW
 RET = RETAIN
 B-B = BACK TO BACK
 EXISTING = - - - - -
 NEW = _____

| | | |
|---------------------------------|--------------------------------------|---------------------|
| PROJECT LAYOUT SHEET #27 | PROJECT NAME: MIDDLEBURY - NEW HAVEN | PLOT DATE: \$DATE\$ |
| | PROJECT NUMBER: NH 9813(1)S | DRAWN BY: C.A.K. |
| | FILE NAME: p97b166.dgn | CHECKED BY: D.W.E. |
| | DESIGNED BY: J.S.P. | SHEET 36 OF 63 |
| | IPARM FILE: pbl66127.1 | |