

646.40 DURABLE 4" WHITE LINE (THERMOPLASTIC)
 (ALL LINES WILL INCLUDE EDGE LINE BREAKS AND RADIUS FOR TOWN HIGHWAYS)

NEW HAVEN:
 STA. 148+50.0 - STA. 165+00.0 LT & RT

646.41 DURABLE 4" YELLOW LINE (THERMOPLASTIC)
 (ALL LINES WILL INCLUDE C/L BREAKS FOR TOWN HIGHWAYS) S=SOLID, D=DASHED

NEW HAVEN:
 STA. 148+50.0 - STA. 153+50.0 LT S - S
 STA. 153+50.0 - STA. 160+50.0 D - S
 STA. 160+50.0 - STA. 162+50.0 - D - D
 STA. 162+50.0 - STA. 165+00.0 S - D
 STA. 149+00.16 DOUBLE SOLID RT, TH-27

646.46 DURABLE 24" STOP BAR (THERMOPLASTIC)
 NEW HAVEN:
 STA. 149+00.16 RT, TH-27

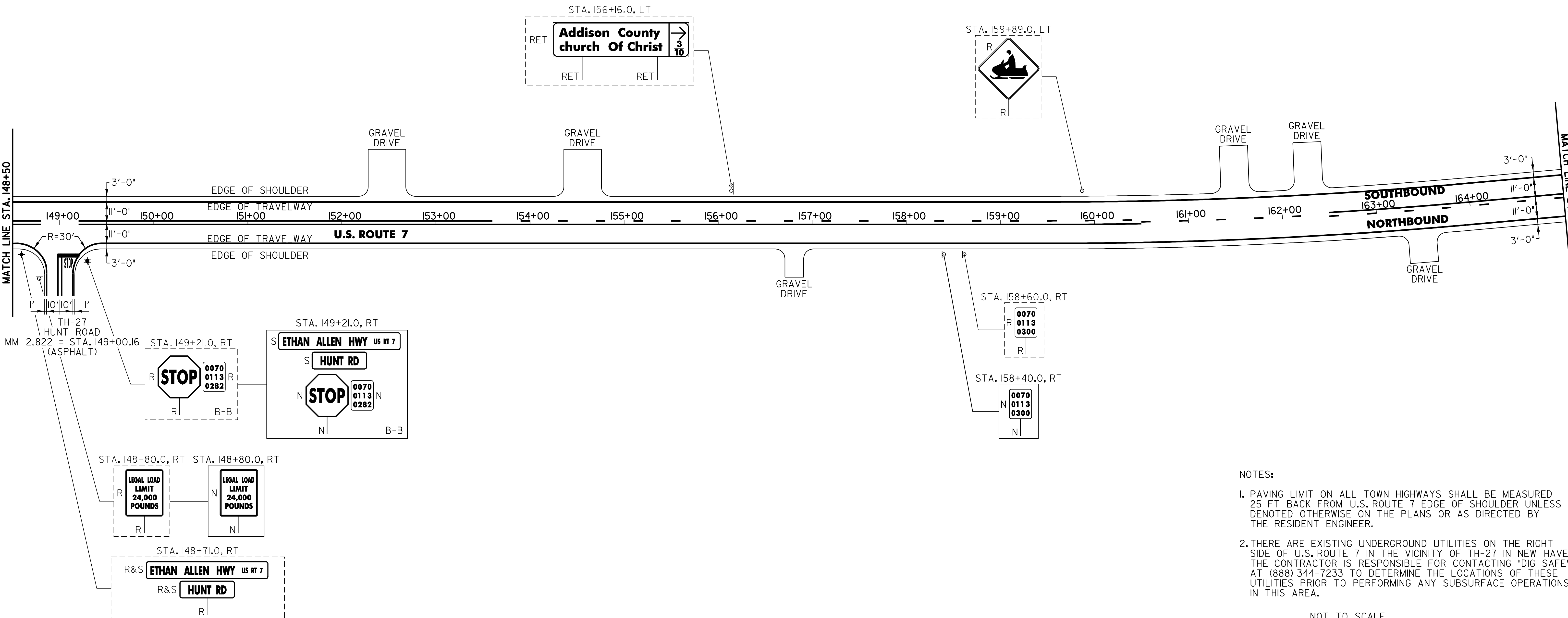
646.66 TEMPORARY 24" STOP BAR (PAINT)
 NEW HAVEN:
 STA. 149+00.16 RT, TH-27

646.50 DURABLE LETTER OR SYMBOL (THERMOPLASTIC)
 NEW HAVEN:
 STA. 149+00.16 RT, TH-26, "S,T,O,P" (4 EA)

646.70 TEMPORARY LETTER OR SYMBOL (PAINT)
 NEW HAVEN:
 STA. 149+00.16 RT, TH-26, "S,T,O,P" (4 EA)

675.50 REMOVING SIGNS
 AS SHOWN - 7

675.60 ERECTING SALVAGED SIGNS
 AS SHOWN - 2



- NOTES:
- PAVING LIMIT ON ALL TOWN HIGHWAYS SHALL BE MEASURED 25 FT BACK FROM U.S. ROUTE 7 EDGE OF SHOULDER UNLESS DENOTED OTHERWISE ON THE PLANS OR AS DIRECTED BY THE RESIDENT ENGINEER.
 - THERE ARE EXISTING UNDERGROUND UTILITIES ON THE RIGHT SIDE OF U.S. ROUTE 7 IN THE VICINITY OF TH-27 IN NEW HAVEN. THE CONTRACTOR IS RESPONSIBLE FOR CONTACTING "DIG SAFE" AT (888) 344-7233 TO DETERMINE THE LOCATIONS OF THESE UTILITIES PRIOR TO PERFORMING ANY SUBSURFACE OPERATIONS IN THIS AREA.

NOT TO SCALE

SIGN LEGEND
 R = REMOVE
 S = SALVAGE
 N = NEW
 RET = RETAIN
 B-B = BACK TO BACK
 EXISTING = -----
 NEW = _____

PROJECT LAYOUT SHEET #17	PROJECT NAME: MIDDLEBURY - NEW HAVEN	FILE NAME: p97bl66.dgn	PLOT DATE: \$DATE\$
	PROJECT NUMBER: NH 9813(1)S	PROJECT LEADER: D.E.G.	DRAWN BY: C.A.K.
	DESIGNED BY: J.S.P.	CHECKED BY: D.W.E.	
	IPARM FILE: pbl66117.i		SHEET 26 OF 63