

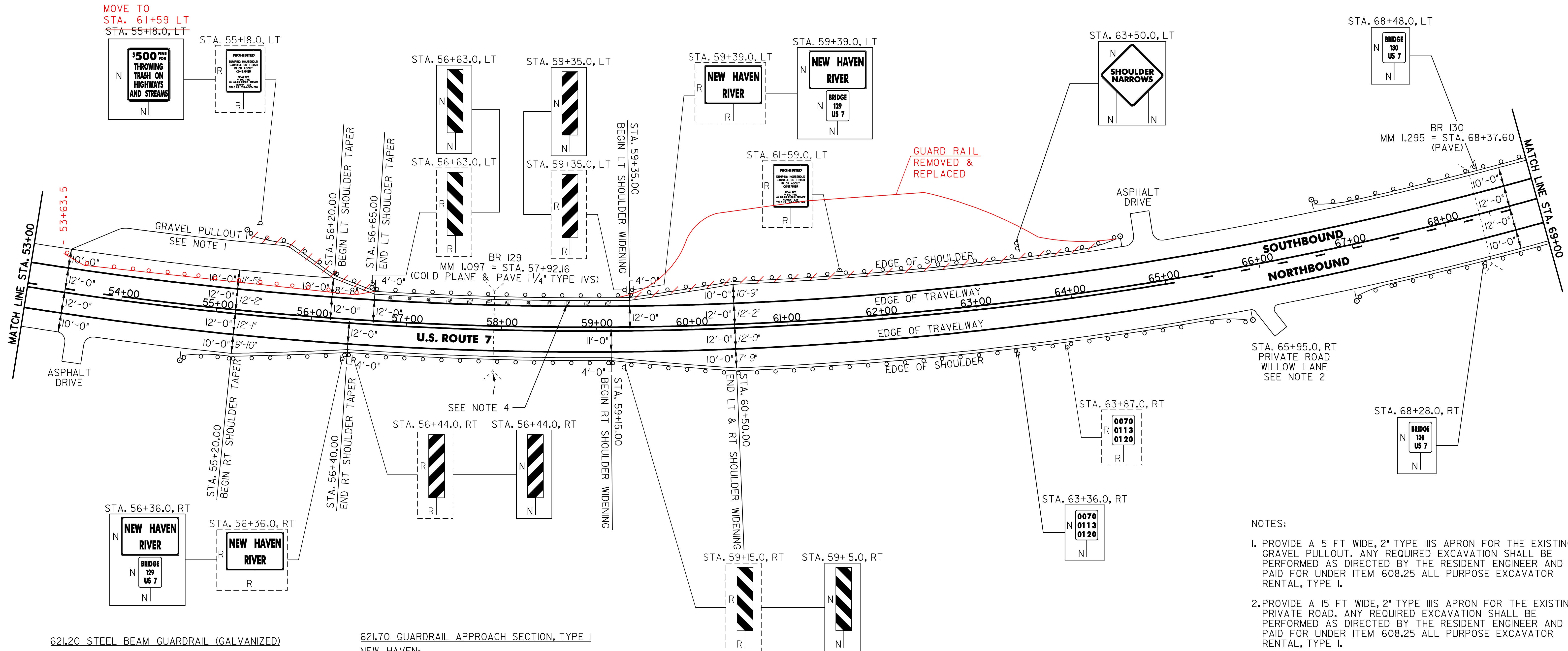
646.40 DURABLE 4" WHITE LINE (THERMOPLASTIC)  
 (ALL LINES WILL INCLUDE EDGE LINE BREAKS AND RADIUS FOR TOWN HIGHWAYS)

NEW HAVEN:  
 STA. 53+00.0 - STA. 69+00.0 LT & RT

646.41 DURABLE 4" YELLOW LINE (THERMOPLASTIC)  
 (ALL LINES WILL INCLUDE C/L BREAKS FOR TOWN HIGHWAYS) S=SOLID, D=DASHED

NEW HAVEN:  
 STA. 53+00.0 - STA. 54+00.0 LT S  
 STA. 54+00.0 - STA. 65+00.0 S  
 STA. 65+00.0 - STA. 69+00.0 S

675.50 REMOVING SIGNS  
 AS SHOWN - 9



- NOTES:
1. PROVIDE A 5 FT WIDE, 2" TYPE IIIS APRON FOR THE EXISTING GRAVEL PULLOUT. ANY REQUIRED EXCAVATION SHALL BE PERFORMED AS DIRECTED BY THE RESIDENT ENGINEER AND PAID FOR UNDER ITEM 608.25 ALL PURPOSE EXCAVATOR RENTAL, TYPE I.
  2. PROVIDE A 15 FT WIDE, 2" TYPE IIIS APRON FOR THE EXISTING PRIVATE ROAD. ANY REQUIRED EXCAVATION SHALL BE PERFORMED AS DIRECTED BY THE RESIDENT ENGINEER AND PAID FOR UNDER ITEM 608.25 ALL PURPOSE EXCAVATOR RENTAL, TYPE I.
  3. SEE SHEET 61 FOR BR 129 DETAILS.
  4. THERE ARE 12 EXISTING DRAINAGE STRUCTURES LOCATED IN THE SOUTHBOUND SHOULDER ON BR 129. HEIGHT ADJUSTMENTS OR REHABILITATIONS WILL NOT BE REQUIRED.

NOT TO SCALE

621.20 STEEL BEAM GUARDRAIL (GALVANIZED)

NEW HAVEN:  
 STA. 55+08.0 - STA. 55+95.5 RT (87.5 LF)  
 STA. 55+63.5 - STA. 56+51.0 LT (87.5 LF)  
 STA. 59+26.0 - STA. 65+51.0 RT (625.0 LF)  
 STA. 59+84.5 - STA. 64+22.0 LT (437.5 LF)  
 STA. 67+06.5 - STA. 69+00.0 LT (193.5 LF)  
 STA. 67+31.5 - STA. 69+00.0 RT (168.5 LF)

621.70 GUARDRAIL APPROACH SECTION, TYPE I

NEW HAVEN:  
 STA. 55+95.5 - STA. 56+45.5 RT  
 STA. 59+34.5 - STA. 59+84.5 LT

621.71 GUARDRAIL APPROACH SECTION, TYPE II

NEW HAVEN:  
 STA. 56+51.0 - STA. 56+63.5 LT  
 STA. 59+13.5 - STA. 59+26.0 RT

621.505 MANUFACTURED TERMINAL SECTION (FLARED)

NEW HAVEN:  
 STA. 54+70.5 - STA. 55+08.0 RT  
 STA. 55+26.0 - STA. 55+63.5 LT  
 STA. 64+22.0 - STA. 64+59.5 LT  
 STA. 65+51.0 - STA. 65+88.5 RT  
 STA. 66+69.0 - STA. 67+06.5 LT  
 STA. 66+94.0 - STA. 67+31.5 RT

621.80 REMOVAL AND DISPOSAL OF GUARDRAIL

NEW HAVEN:  
 STA. 55+19.0 - STA. 56+45.5 RT (126.5 LF)  
 STA. 55+40.0 - STA. 56+63.5 LT (95.5 LF)  
 STA. 59+13.5 - STA. 65+85.0 RT (671.5 LF)  
 STA. 59+34.5 - STA. 64+53.0 LT (518.5 LF)  
 STA. 66+78.0 - STA. 69+00.0 LT (222.0 LF)  
 STA. 67+15.0 - STA. 69+00.0 RT (185.0 LF)

676.10 DELINEATORS WITH STEEL POSTS

TYPE I WHITE

NEW HAVEN:  
 STA. 54+70.5 RT  
 STA. 55+26.0 LT  
 STA. 64+59.5 LT  
 STA. 65+88.5 RT  
 STA. 66+69.0 LT  
 STA. 66+94.0 RT

SIGN LEGEND

R = REMOVE  
 S = SALVAGE  
 N = NEW  
 RET = RETAIN  
 B-B = BACK TO BACK  
 EXISTING = - - - - -  
 NEW = \_\_\_\_\_

**PROJECT LAYOUT SHEET #11**

PROJECT NAME: MIDDLEBURY - NEW HAVEN  
 PROJECT NUMBER: NH 9813(1)S  
 FILE NAME: p97bl66.dgn  
 PROJECT LEADER: D.E.G.  
 DESIGNED BY: J.S.P.  
 IPARM FILE: pbl66lll.l

PLOT DATE: \$DATE\$  
 DRAWN BY: C.A.K.  
 CHECKED BY: D.W.E.  
 SHEET 20 OF 63