

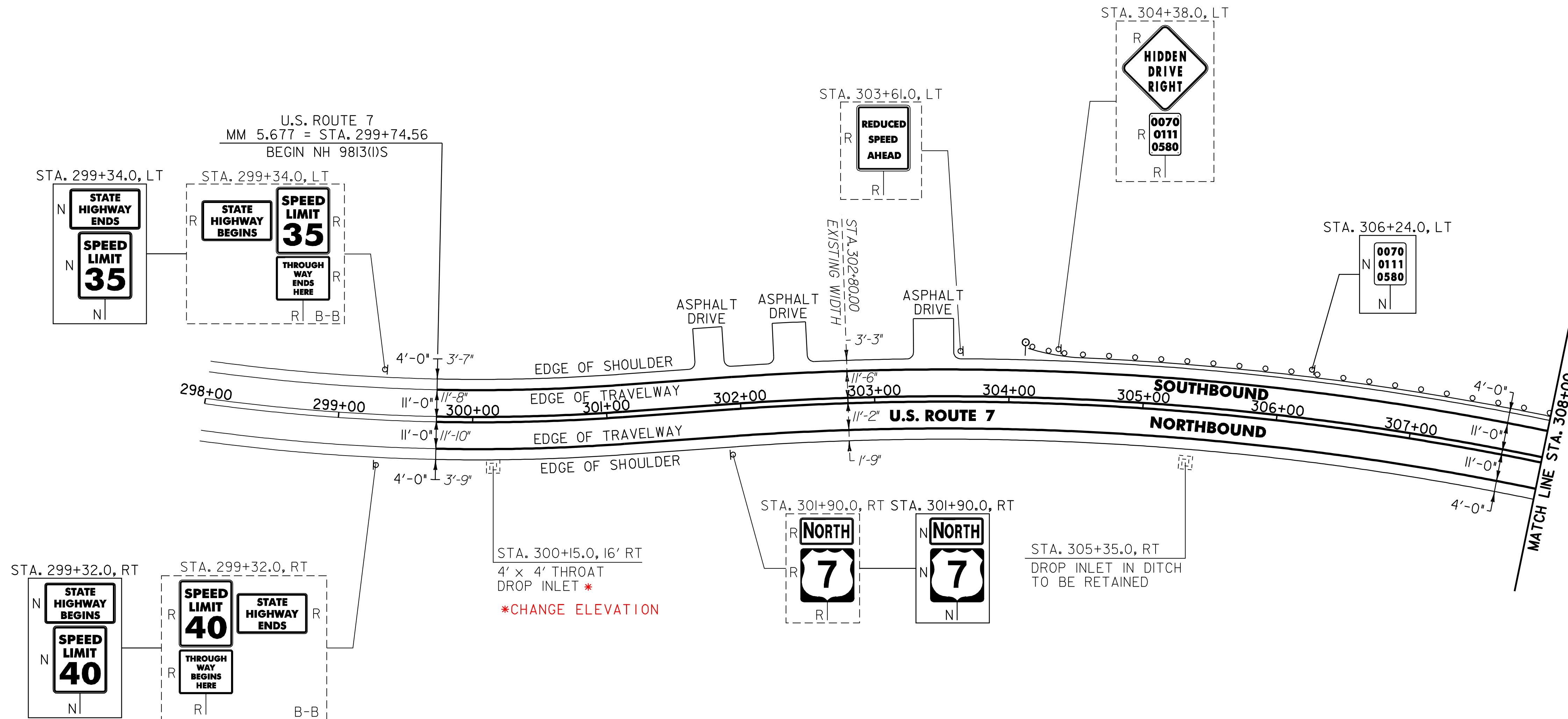
646.40 DURABLE 4" WHITE LINE (THERMOPLASTIC)
 (ALL LINES WILL INCLUDE EDGE LINE BREAKS AND
 RADIUS FOR TOWN HIGHWAYS)

MIDDLEBURY:
 STA. 299+74.56 - STA. 308+00.0 LT & RT

646.41 DURABLE 4" YELLOW LINE (THERMOPLASTIC)
 (ALL LINES WILL INCLUDE C/L BREAKS FOR
 TOWN HIGHWAYS) S=SOLID, D=DASHED

MIDDLEBURY:
 STA. 299+74.56 - STA. 308+00.0 LT RT
 S - S S

675.50 REMOVING SIGNS
 AS SHOWN - II



604.412 REHABING DI'S, CB'S, OR MH'S, CLASS I

MIDDLEBURY:
 STA. 300+15.0 RT

621.20 STEEL BEAM GUARDRAIL (GALVANIZED)

MIDDLEBURY:
 STA. 304+51.0 - STA. 308+00.0 LT (349.0 LF)

621.505 MANUFACTURED TERMINAL SECTION (FLARED)

MIDDLEBURY:
 STA. 304+13.5 - STA. 304+51.0 LT

621.80 REMOVAL AND DISPOSAL OF GUARDRAIL

MIDDLEBURY:
 STA. 304+71.0 - STA. 308+00.0 LT (329.0 LF)

676.10 DELINEATORS WITH STEEL POSTS

♀ TYPE I WHITE
 MIDDLEBURY:
 STA. 304+13.5 LT

SIGN LEGEND

- R = REMOVE
- S = SALVAGE
- N = NEW
- RET = RETAIN
- B-B = BACK TO BACK
- EXISTING = -----
- NEW = -----

PROJECT LAYOUT SHEET #1

PROJECT NAME: MIDDLEBURY - NEW HAVEN
 PROJECT NUMBER: NH 9813(1)S

FILE NAME: p97b166.dgn
 PROJECT LEADER: D.E.G.
 DESIGNED BY: J.S.P.
 IPARM FILE: pbl66101.i

PLOT DATE: \$DATE\$
 DRAWN BY: C.A.K.
 CHECKED BY: D.W.E.
 SHEET 10 OF 63

NOT TO SCALE