

646.43 DURABLE 200 mm YELLOW LINE
 MENDON:
 STA. 2+023.700 - STA. 2+176.100 LT & RT, MEDIAN HATCHING (70 m)

646.50 DURABLE LETTER OR SYMBOL
 MENDON:
 STA. 2+005.060 C/L, "O,N,L,Y" (4 EA)
 STA. 2+008.760 C/L, "A,R,R,O,W" (1EA)
 STA. 2+018.117 LT, T-1, "S,T,O,P" (4 EA)

646.70 TEMPORARY LETTER OR SYMBOL
 MENDON:
 STA. 2+008.760 C/L, "A,R,R,O,W" (1EA)
 STA. 2+018.117 LT, T-1, "S,T,O,P" (4 EA)

646.46 DURABLE 600 mm STOP BAR
 MENDON:
 STA. 2+018.117 LT, T-1

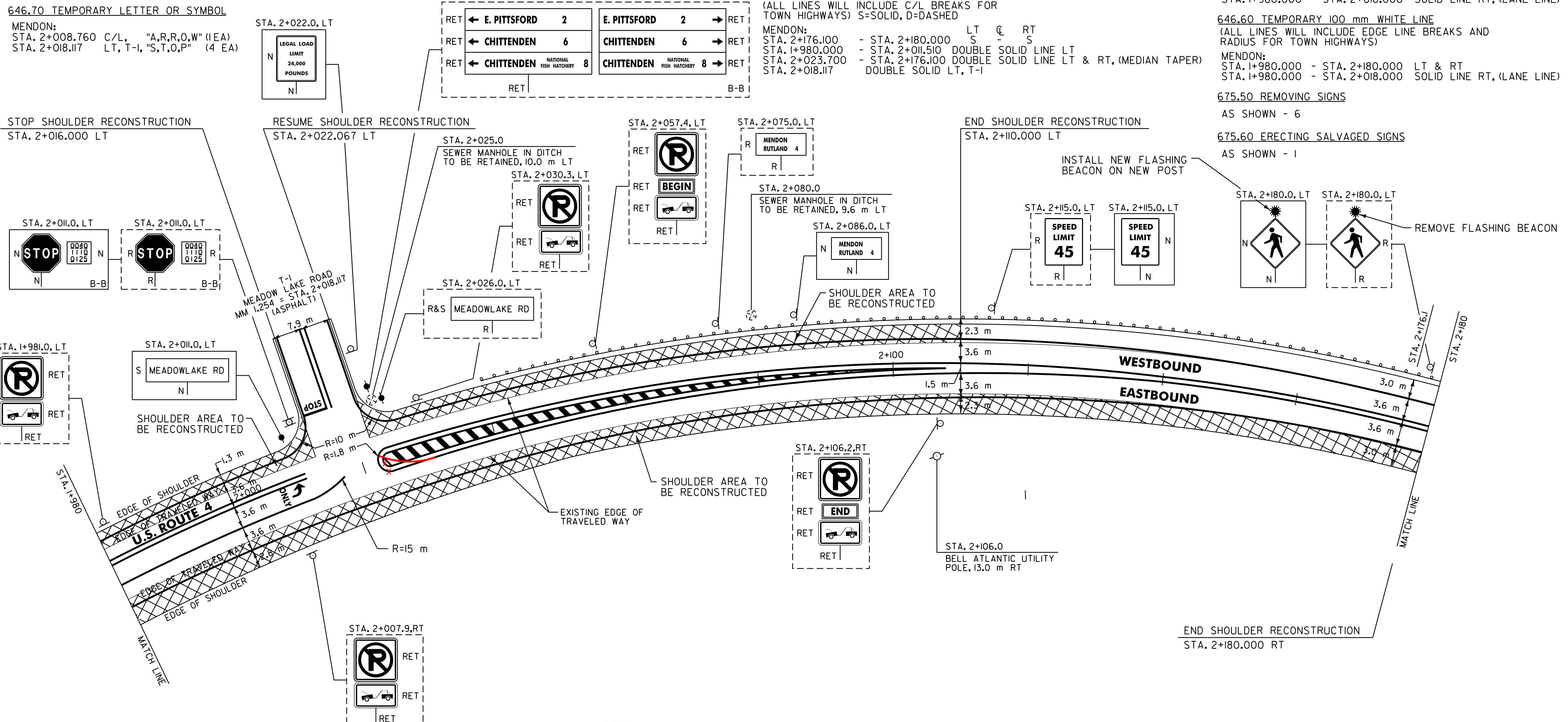
646.66 TEMPORARY 600 mm STOP BAR
 MENDON:
 STA. 2+018.117 LT, T-1

646.41 DURABLE 100 mm YELLOW LINE
 (ALL LINES WILL INCLUDE C/L BREAKS FOR TOWN HIGHWAYS) S=SOLID, D=DASHED
 MENDON:
 STA. 2+176.100 - STA. 2+180.000 S - RT
 STA. 1+980.000 - STA. 2+011.510 DOUBLE SOLID LINE LT
 STA. 2+023.700 - STA. 2+176.100 DOUBLE SOLID LINE LT & RT, (MEDIAN TAPER)
 STA. 2+018.117 DOUBLE SOLID LT, T-1

646.61 TEMPORARY 100 mm YELLOW LINE
 (ALL LINES WILL INCLUDE C/L BREAKS FOR TOWN HIGHWAYS) S=SOLID, D=DASHED
 MENDON:
 STA. 2+176.100 - STA. 2+180.000 S - RT
 STA. 1+980.000 - STA. 2+011.510 DOUBLE SOLID LINE LT
 STA. 2+023.700 - STA. 2+176.100 DOUBLE SOLID LINE LT & RT, (MEDIAN TAPER)
 STA. 2+018.117 DOUBLE SOLID LT, T-1

646.40 DURABLE 100 mm WHITE LINE
 (ALL LINES WILL INCLUDE EDGE LINE BREAKS AND RADIUS FOR TOWN HIGHWAYS)
 MENDON:
 STA. 1+980.000 - STA. 2+180.000 LT & RT
 STA. 1+980.000 - STA. 2+018.000 SOLID LINE RT, (LANE LINE)

646.60 TEMPORARY 100 mm WHITE LINE
 (ALL LINES WILL INCLUDE EDGE LINE BREAKS AND RADIUS FOR TOWN HIGHWAYS)
 MENDON:
 STA. 1+980.000 - STA. 2+180.000 LT & RT
 STA. 1+980.000 - STA. 2+018.000 SOLID LINE RT, (LANE LINE)



NOTES:

- PAVING LIMIT ON ALL TOWN HIGHWAYS SHALL BE MEASURED 8 m BACK FROM U.S. ROUTE 4 EDGE OF SHOULDER UNLESS DENOTED OTHERWISE ON THE PLANS OR AS DIRECTED BY THE RESIDENT ENGINEER.
- SEE SHEET 4 OF 83 FOR SHOULDER RECONSTRUCTION DETAIL *10N ON THE SHOULDER RECONSTRUCTION DETAIL SHEET.
- THE EXISTING SHOULDER WIDTHS ARE APPROXIMATELY 3.0 m FOR BOTH THE WESTBOUND AND EASTBOUND SHOULDER RECONSTRUCTION AREAS.
- THE SHOULDER RECONSTRUCTION BASE COURSES SHALL BE PAID FOR UNDER ITEM 616.47 BITUMINOUS CONCRETE GUTTERS AND TRAFFIC ISLANDS (MOD.).
- THE CONTRACTOR SHOULD BE AWARE THAT AN EXISTING BURIED FIBER OPTIC CABLE IS LOCATED BETWEEN STA. 1+980.0 RT AND STA. 2+106.0 RT. THE CONTRACTOR IS RESPONSIBLE FOR CONTACTING "DIG SAFE" AT (888) 344-7233 TO DETERMINE THE LOCATION OF THE FIBER OPTIC CABLE PRIOR TO PERFORMING ANY SHOULDER RECONSTRUCTION WORK WITHIN THE SPECIFIED LIMITS.

SIGN LEGEND
 R= REMOVE
 S= SALVAGE
 N= NEW
 RET= RETAIN
 B-B= BACK TO BACK
 EXISTING= - - - - -
 NEW= _____

T-1 TURN LANE DETAIL SHEET 2	SURVEYED BY <u>N/A</u> DATE <u>N/A</u>
	DRAWN BY <u>C.A.K.</u> DATE <u>11/99</u>
	SQUAD LEADER <u>T.P.K.</u>
	DESIGN FILE NO. <u>zpage\97bl60\pbl60.dgn</u>
IPARM _____ DATE _____	
FILE <u>pbl60q34.i</u> PLOTTED <u>N/A</u>	
PROJ. NAME <u>BUILAND - KILLINGIQN</u>	
PROJ. NO. <u>NH_980911S</u>	
SHEET <u>43</u> OF <u>83</u> SHEETS _____	

ARCHIVED
IN DPR

DATUM _____
 VERTICAL N/A
 HORIZONTAL N/A

678.16 FLASHING BEACON - GROUND MOUNTED
 AS SHOWN - I