

646.4 DURABLE 100 mm YELLOW LINE

(ALL LINES WILL INCLUDE C/L BREAKS FOR TOWN HIGHWAYS) S=SOLID, D=DASHED

MENDON:
 STA. I+780.000 - STA. I+790.530 LT S - RT S
 STA. I+790.530 - STA. I+973.410 DOUBLE SOLID LINE LT & RT, (MEDIAN HATCHING)
 STA. I+973.410 - STA. I+980.000 DOUBLE SOLID LINE LT

646.6 TEMPORARY 100 mm YELLOW LINE

(ALL LINES WILL INCLUDE C/L BREAKS FOR TOWN HIGHWAYS) S=SOLID, D=DASHED

MENDON:
 STA. I+780.000 - STA. I+790.530 LT S - RT S
 STA. I+790.530 - STA. I+973.410 DOUBLE SOLID LINE LT & RT, (MEDIAN HATCHING)
 STA. I+973.410 - STA. I+980.000 DOUBLE SOLID LINE LT

646.40 DURABLE 100 mm WHITE LINE

(ALL LINES WILL INCLUDE EDGE LINE BREAKS AND RADIUS FOR TOWN HIGHWAYS)

MENDON:
 STA. I+780.000 - STA. I+980.000 LT & RT
 STA. I+912.450 - STA. I+973.410 DOTTED LINE, RT
 STA. I+973.410 - STA. I+980.000 SOLID LINE RT, (LANE LINE)

646.60 TEMPORARY 100 mm WHITE LINE

(ALL LINES WILL INCLUDE EDGE LINE BREAKS AND RADIUS FOR TOWN HIGHWAYS)

MENDON:
 STA. I+780.000 - STA. I+980.000 LT & RT
 STA. I+912.450 - STA. I+973.410 DOTTED LINE, RT
 STA. I+973.410 - STA. I+980.000 SOLID LINE RT, (LANE LINE)

646.43 DURABLE 200 mm YELLOW LINE

MENDON:
 STA. I+790.530 - STA. I+973.410 LT & RT, MEDIAN HATCHING (83 m)

646.50 DURABLE LETTER OR SYMBOL

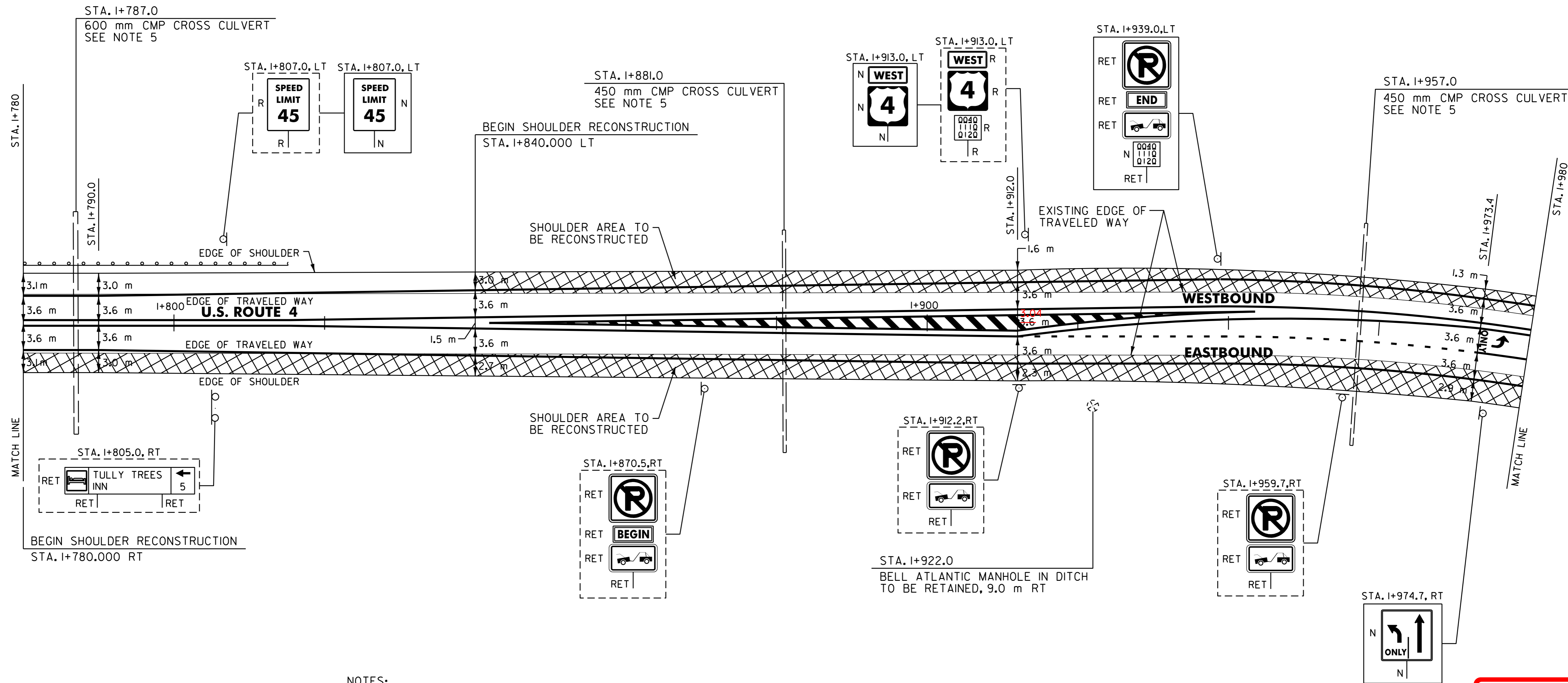
MENDON:
 STA. I+974.660 C/L, "O,N,L,Y" (4 EA)
 STA. I+978.360 C/L, "A,R,R,O,W" (1EA)

646.70 TEMPORARY LETTER OR SYMBOL

MENDON:
 STA. I+978.360 C/L, "A,R,R,O,W" (1EA)

675.50 REMOVING SIGNS

AS SHOWN - 4



- NOTES:
- SEE SHEET 4 OF 83 FOR SHOULDER RECONSTRUCTION DETAIL *ION THE SHOULDER RECONSTRUCTION DETAIL SHEET.
 - THE EXISTING SHOULDER WIDTHS ARE APPROXIMATELY 3.0 m FOR BOTH THE WESTBOUND AND EASTBOUND SHOULDER RECONSTRUCTION AREAS.
 - THE SHOULDER RECONSTRUCTION BASE COURSES SHALL BE PAID FOR UNDER ITEM 616.47 BITUMINOUS GUTTERS AND TRAFFIC ISLANDS (MOD.)
 - THE CONTRACTOR SHOULD BE AWARE THAT AN EXISTING BURIED FIBER OPTIC CABLE IS LOCATED BETWEEN STA. I+780.0 RT AND STA. I+980.0 RT. THE CONTRACTOR IS RESPONSIBLE FOR CONTACTING "DIG SAFE" AT (888) 344-7233 TO DETERMINE THE LOCATION OF THE FIBER OPTIC CABLE PRIOR TO PERFORMING ANY SHOULDER RECONSTRUCTION WORK WITHIN THE SPECIFIED LIMITS.
 - THE CONTRACTOR MUST AVOID THE EXISTING CROSS CULVERTS WHEN PERFORMING ANY SHOULDER RECONSTRUCTION WORK IN THE VICINITY OF THE EXISTING CULVERTS.

**ARCHIVED
IN DPR**

DATUM	
VERTICAL	N/A
HORIZONTAL	N/A

SIGN LEGEND
 R= REMOVE
 S= SALVAGE
 N= NEW
 RET= RETAIN
 B-B= BACK TO BACK
 EXISTING= - - - - -
 NEW= _____

<p>T-1 TURN LANE DETAIL SHEET 1</p>	SURVEYED BY	N/A	DATE	N/A
	DRAWN BY	C.A.K.	DATE	11/29
	SQUAD LEADER	T.P.K.		
	DESIGN FILE NO.	Zpave297b160/pb160.dwg		
	IPARM FILE	pb160r33.i	DATE PLOTTED	N/A
PROJ. NAME	BUILAND - KILLINGION			
PROJ. NO.	NH_980911S			
SHEET	42	OF	83	SHEETS