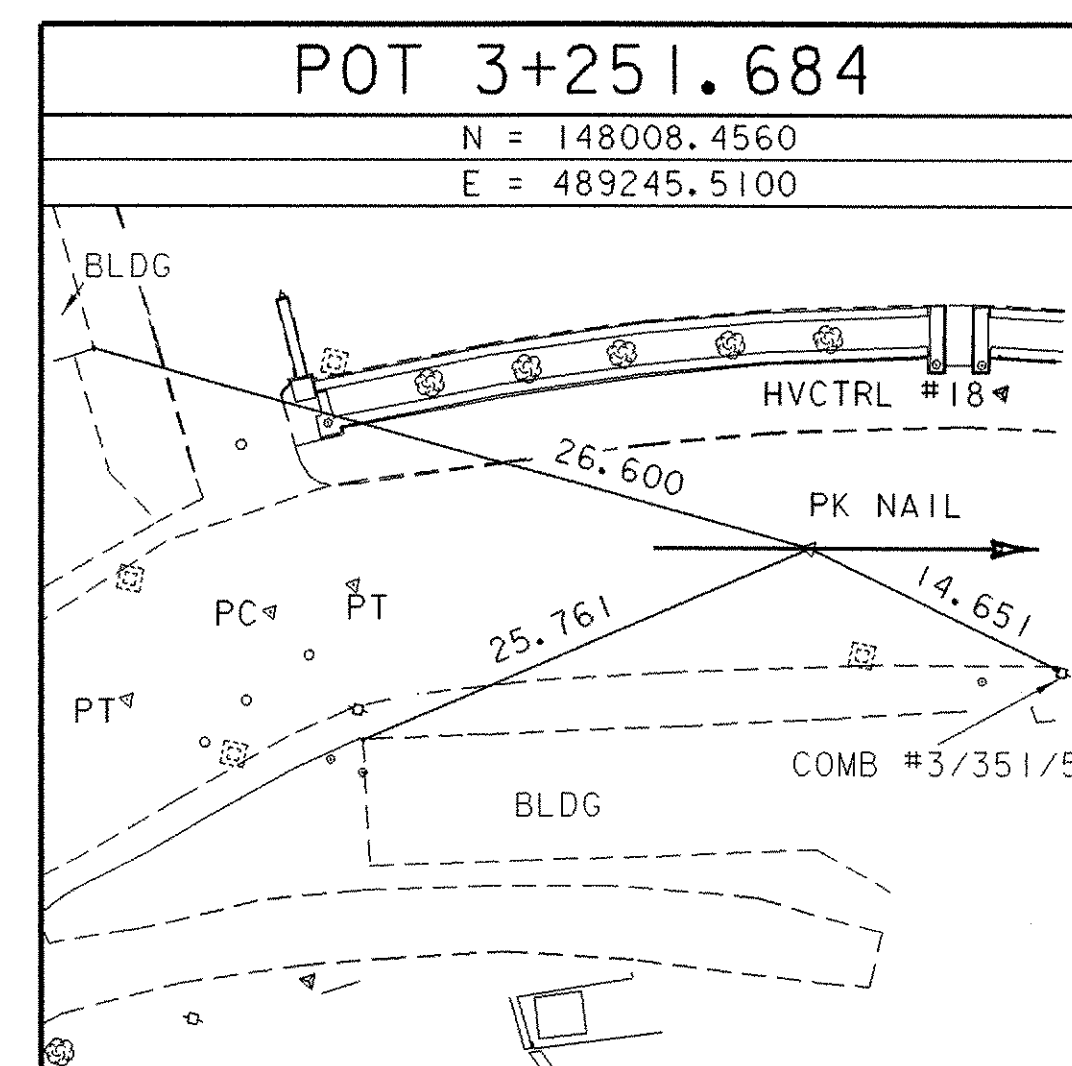
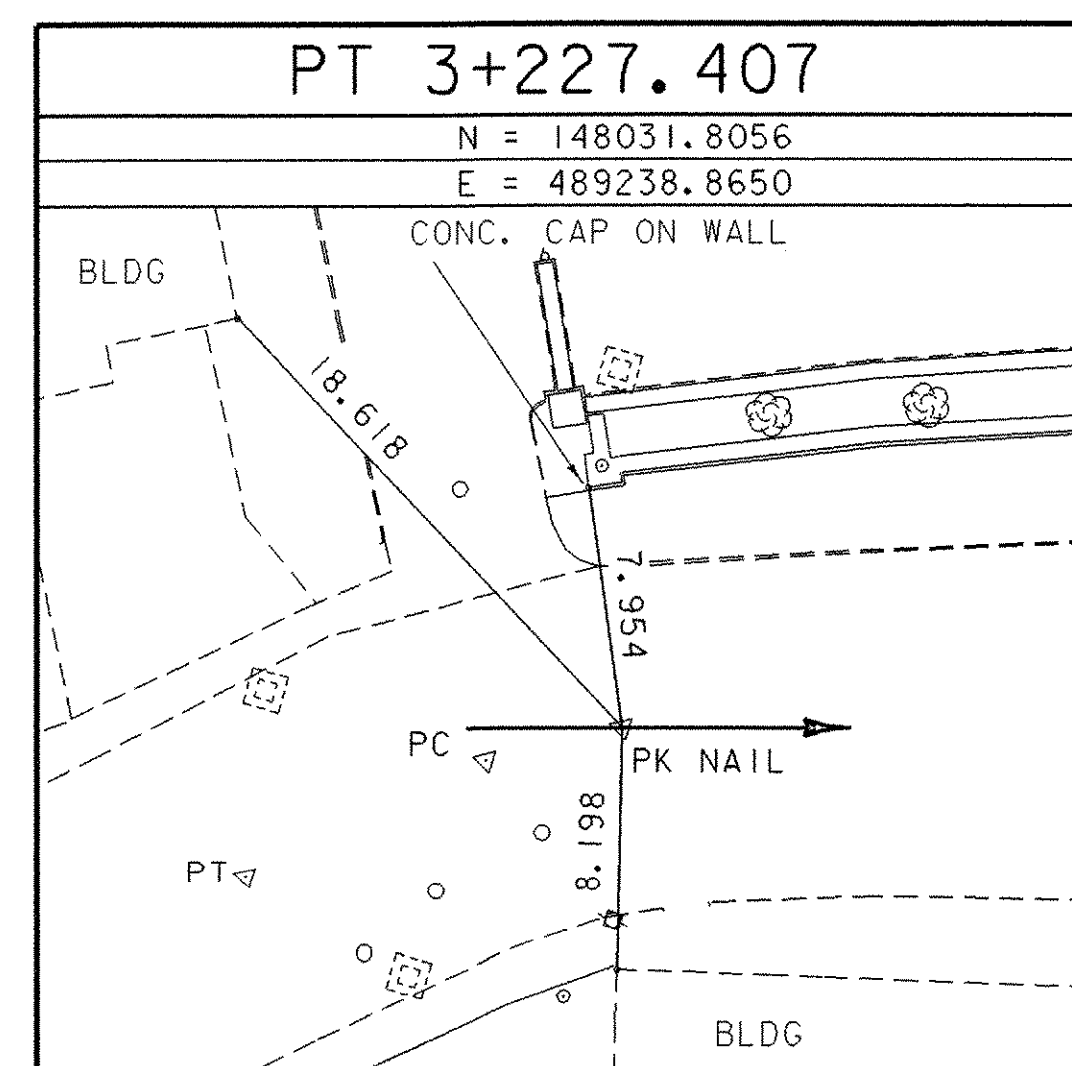
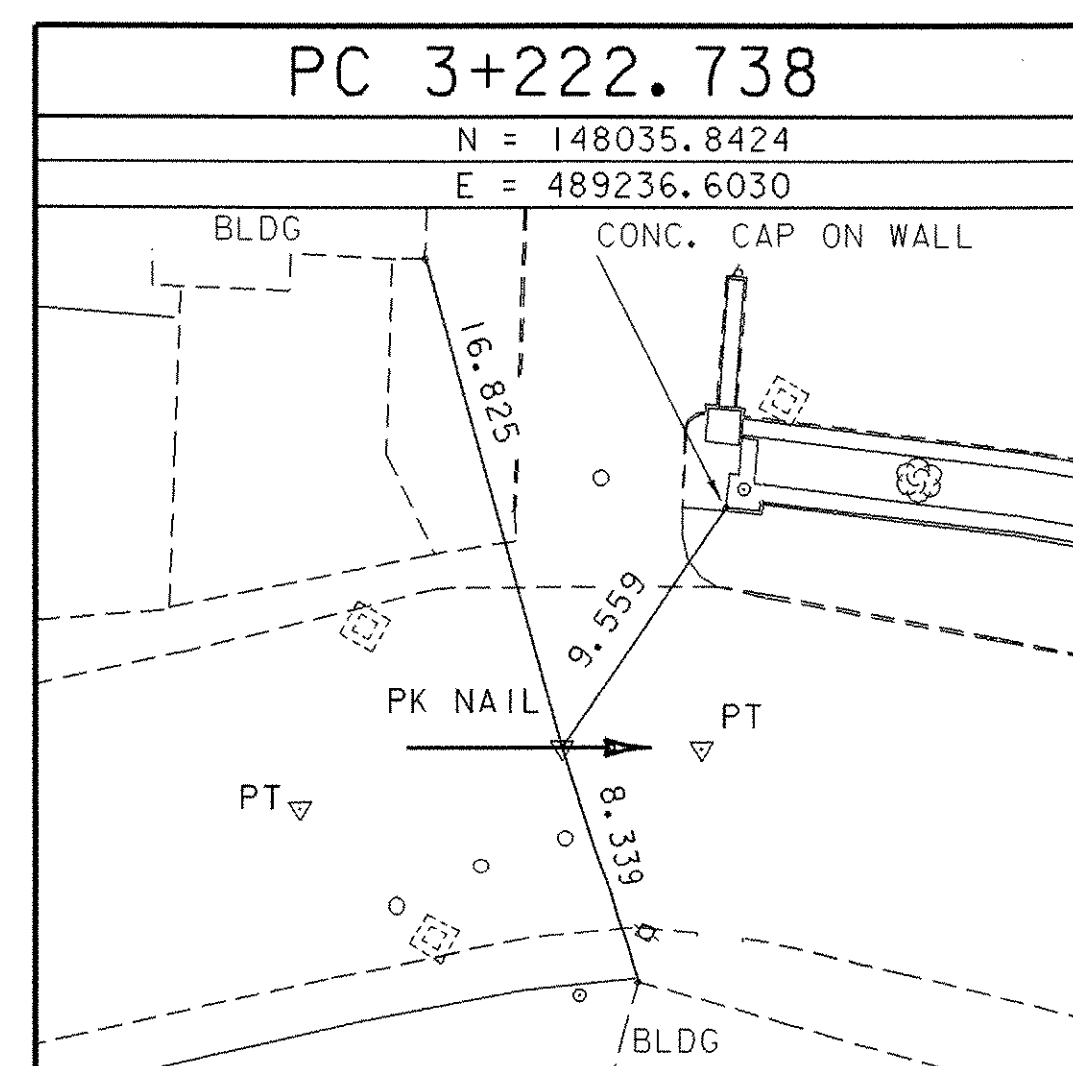
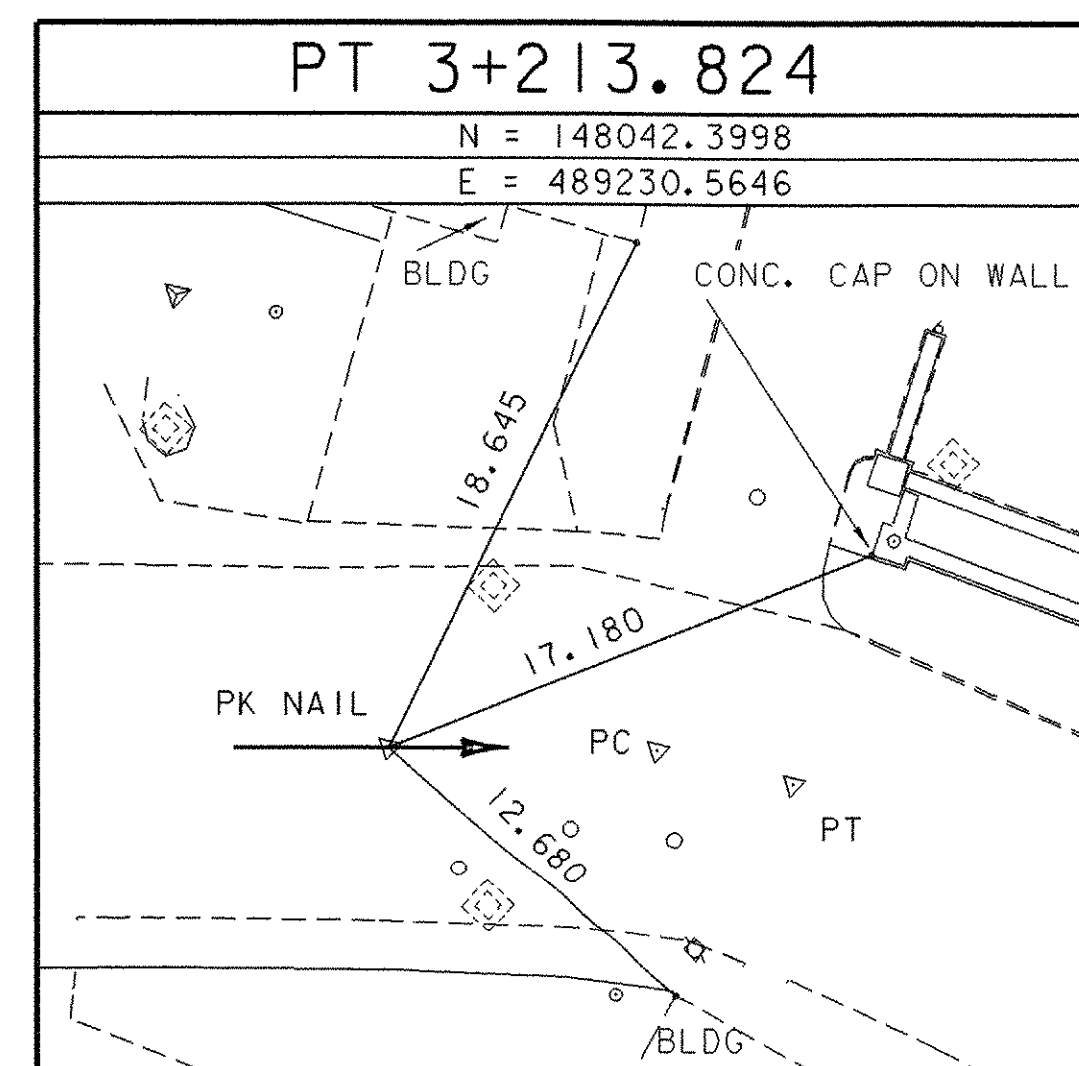
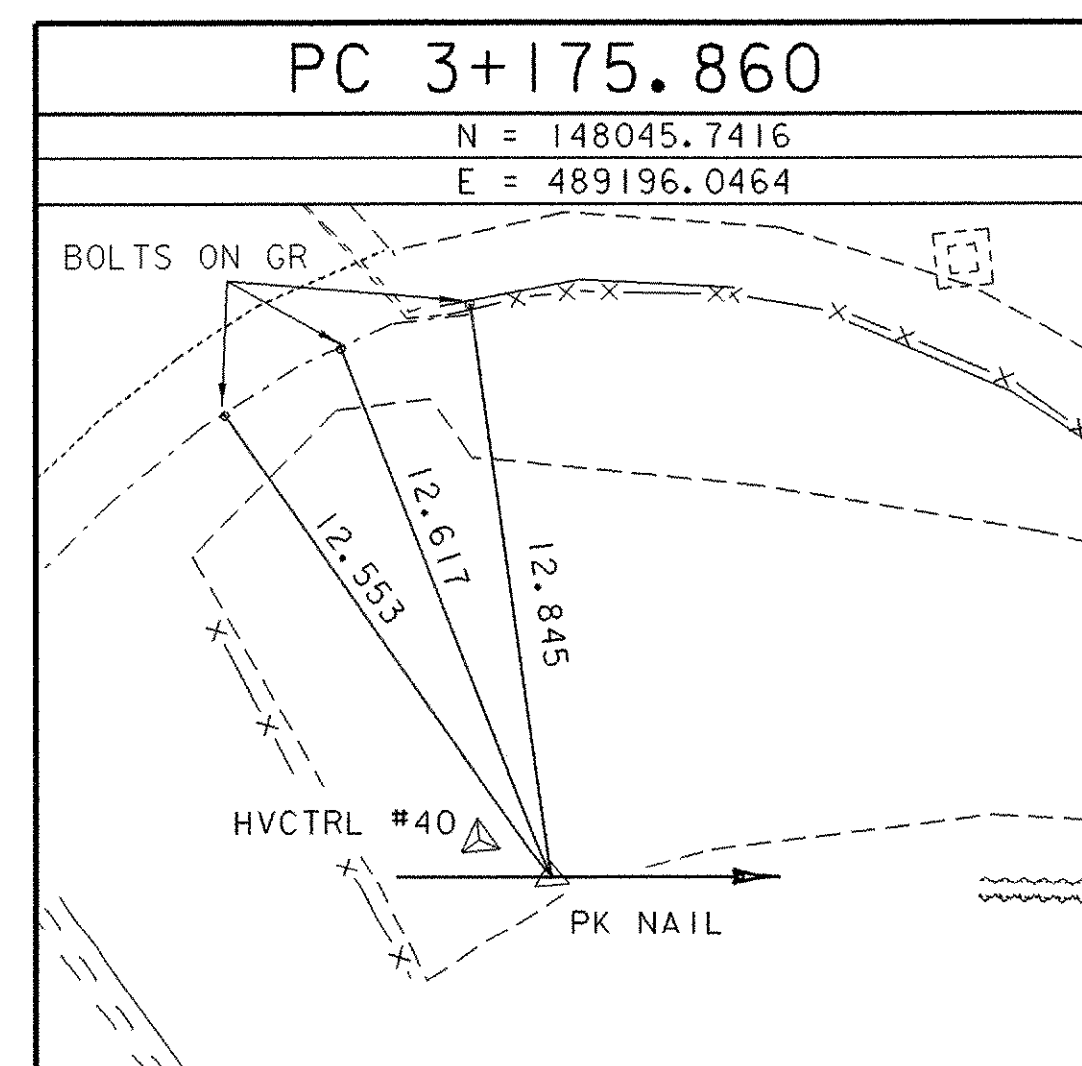


GPS CONTROL POINTS

TRAVERSE TIES

ALIGNMENT TIES



\* ALIGNMENT STAKED ON JANUARY 19, 2002 BY R.GILMAN, P.WINTERS & D.BREER

<b>DATUM</b>	
VERTICAL	NAVD 88
HORIZONTAL	NAD 83/92

PROJECT: <b>BETHEL</b>	PROJECT NO. : <b>BRF 024(33)-CI</b>
DESIGN FILE NAME: 96j250/STRUCTURES/s96j250tie-cl.dgn	PLOT DATE: 09-JUL-2003
IPARM FILE NAME: s96j250tie3-cl.i	SURVEY DATE: 10/99
SURVEYED BY: ORVIS	DRAWN BY: J. HULET
SQUAD LEADER: C. P. WILLIAMS	
ALIGNMENT/TRAVERSE TIE INFORMATION	SHEET: 7 OF 47