

GPS CONTROL POINTS

HVCTRL #1

STANDARD DISC STAMPED

CLEVELAND

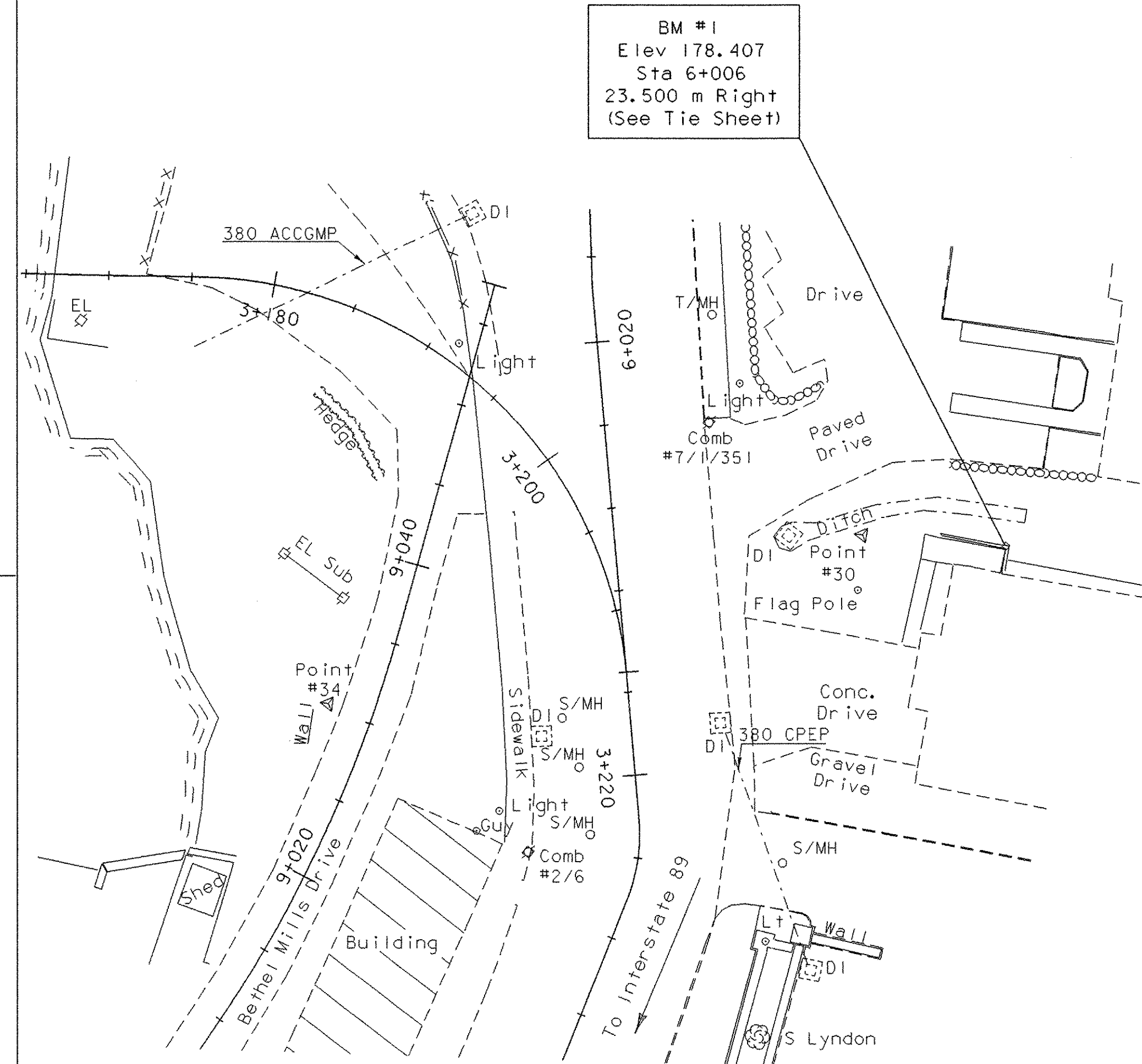
N = 145575.6400

E = 488269.5070

ELEV. = 176.700

DESCRIBED BY VERMONT AGENCY OF TRANSPORTATION 1996 (DJM)
 GENERAL LOCATION BETHEL, 1.4 MILES (2.3 KM) SW OF BETHEL VILLAGE. TO REACH FROM THE JUNCTION OF VT 107 AND VT 12 SOUTH OF BETHEL, PROCEED EASTERLY ALONG VT 107 AND VT 12 FOR APPROX 0.3 M (1.0 FT) TO THE MARK ON THE LEFT. THE MARK IS DIRECTLY OPPOSITE CLEVELAND BROOK ROAD, 25.5 FT (7.8 M) NORTH FROM THE CENTERLINE OF VT 107 AND VT 12. OWNERSHIP STATE OF VERMONT STATION MARK IS A STATE OF VERMONT SURVEY MARK SET IN THE TOP OF A 12 INCH DIAMETER CONCRETE POST SET FLUSH WITH GROUND. IT IS 25.5 FT (7.8 M) NORTH OF CENTERLINE VT 107 AND VT 12, 4.5 FT (1.4 M) NORTH OF 3 CABLE GUARD RAIL, 45 FT (13.7 M) SOUTHEAST FROM COMBINATION POLE 4/49/57, 15 FT (4.6 M) SOUTH OF THE NORTH END OF A 4 FT (1.2 M) X 5 FT (1.5 M) CONCRETE BOX, 72 FT (21.9 M) NORTH OF THE SOUTH END OF A 4 FT (1.2 M) X 5 FT (1.5 M) CONCRETE BOX.

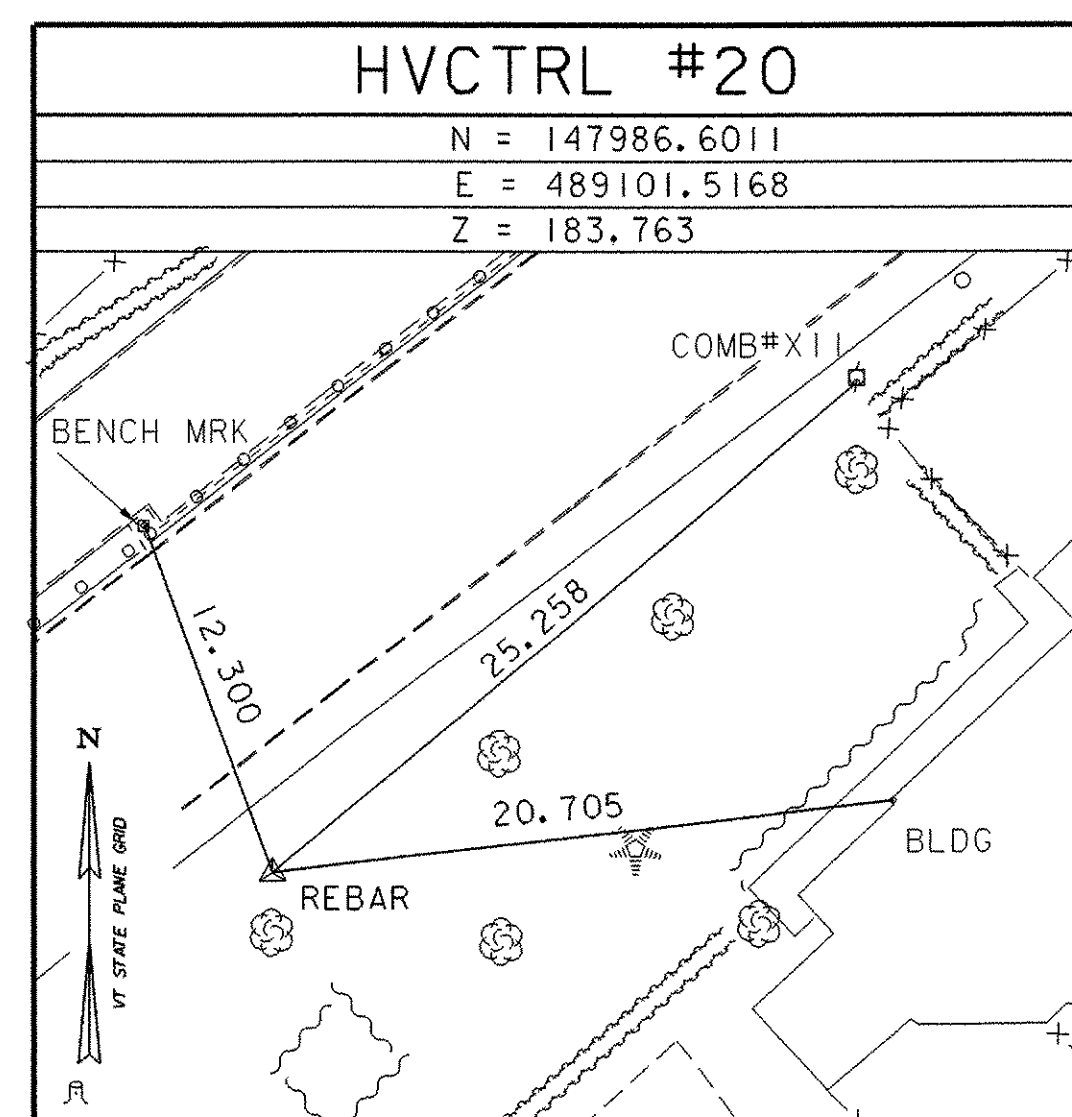
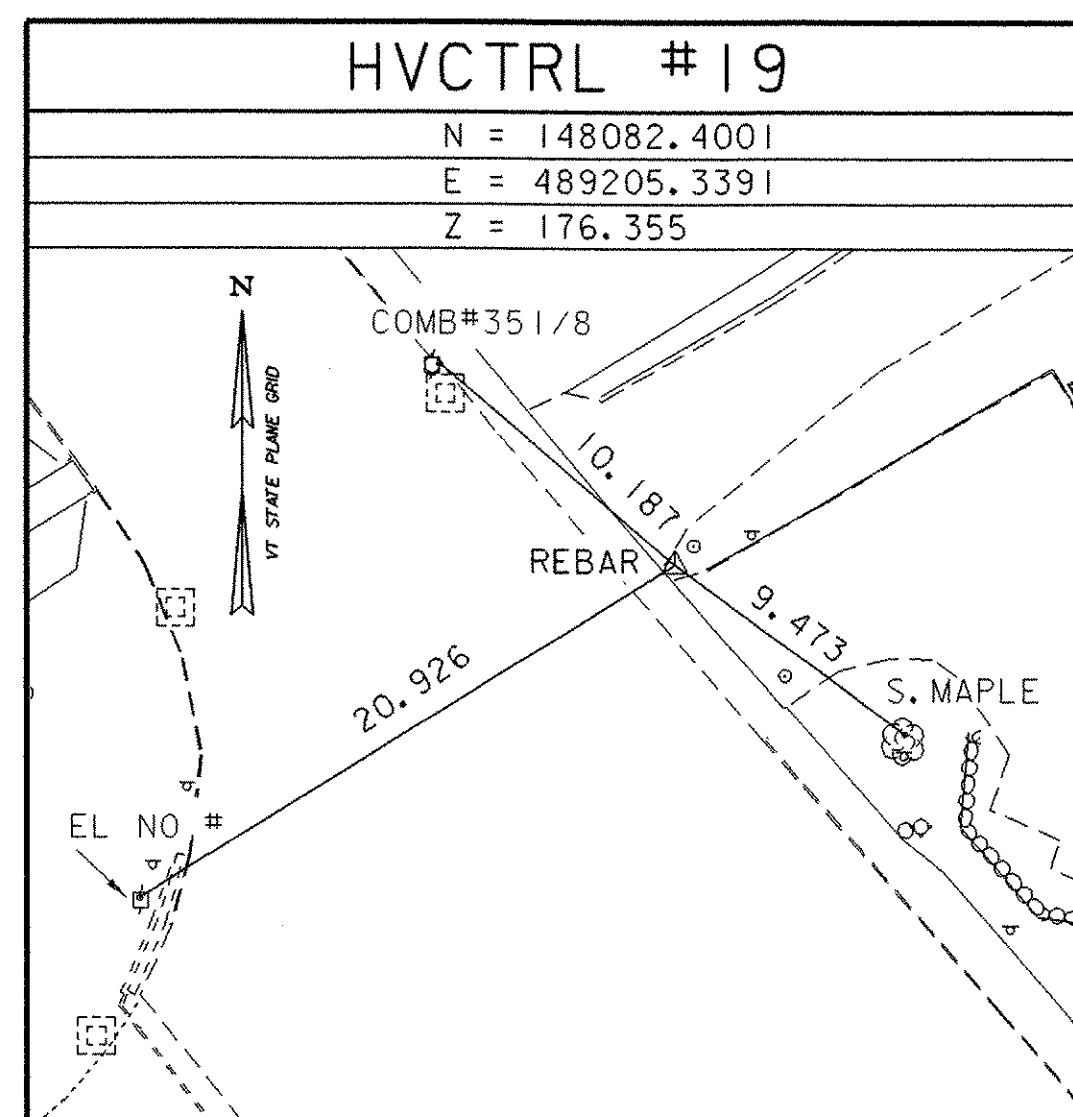
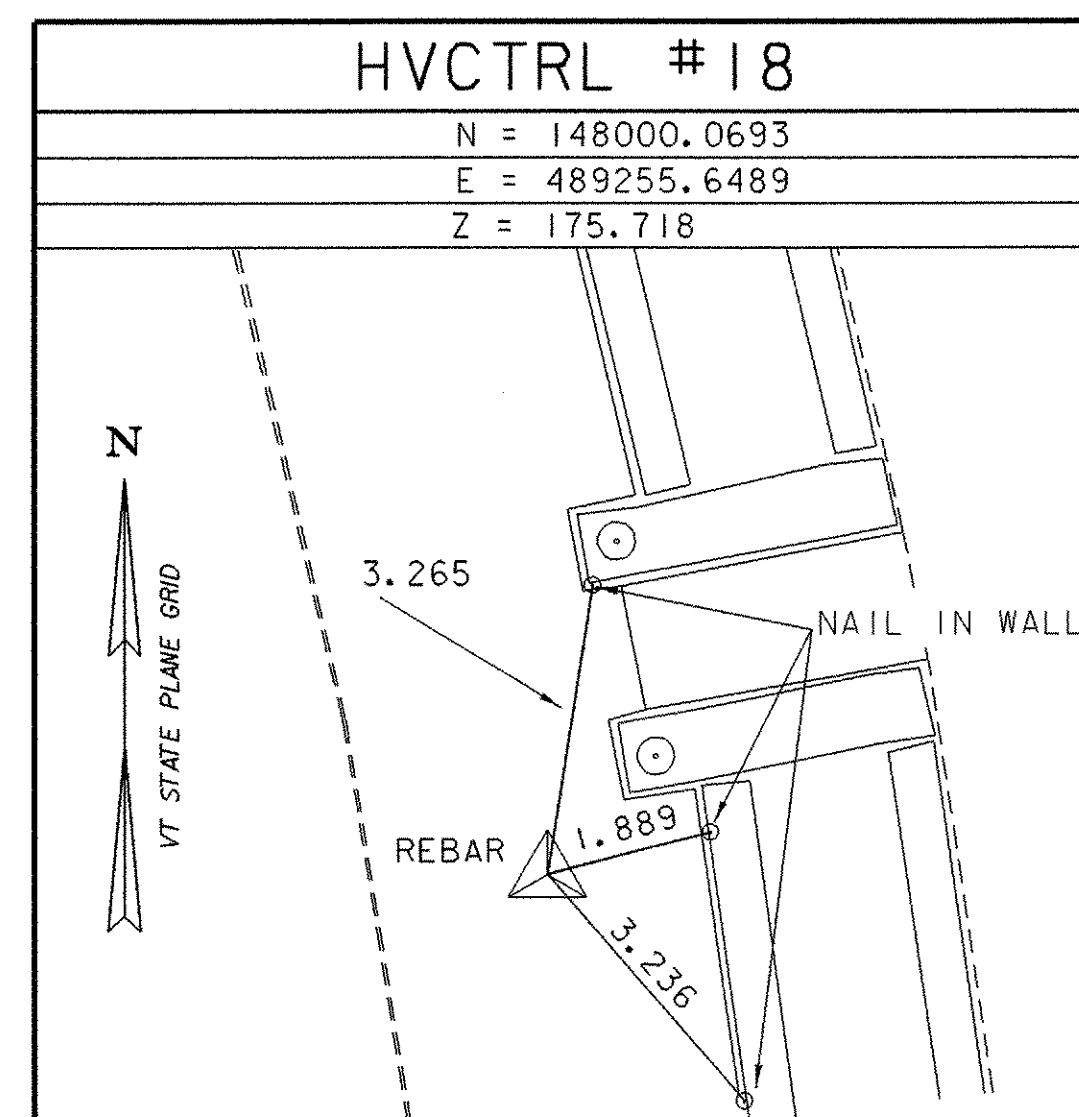
* HORIZONTAL CONTROL IS FROM: BETHEL BR# 022-1 (14) BY: R. GILMAN FROM THAT FILE POINTS 8 AND 9 WERE USED TO CREATE POINT 18.
 * DESCRIPTION PROVIDED BY VERMONT AGENCY OF TRANSPORTATION GEODETIC SURVEY UNIT



BM #1
 Elev 178.407
 Sta 6+006
 23.500 m Right
 (See Tie Sheet)

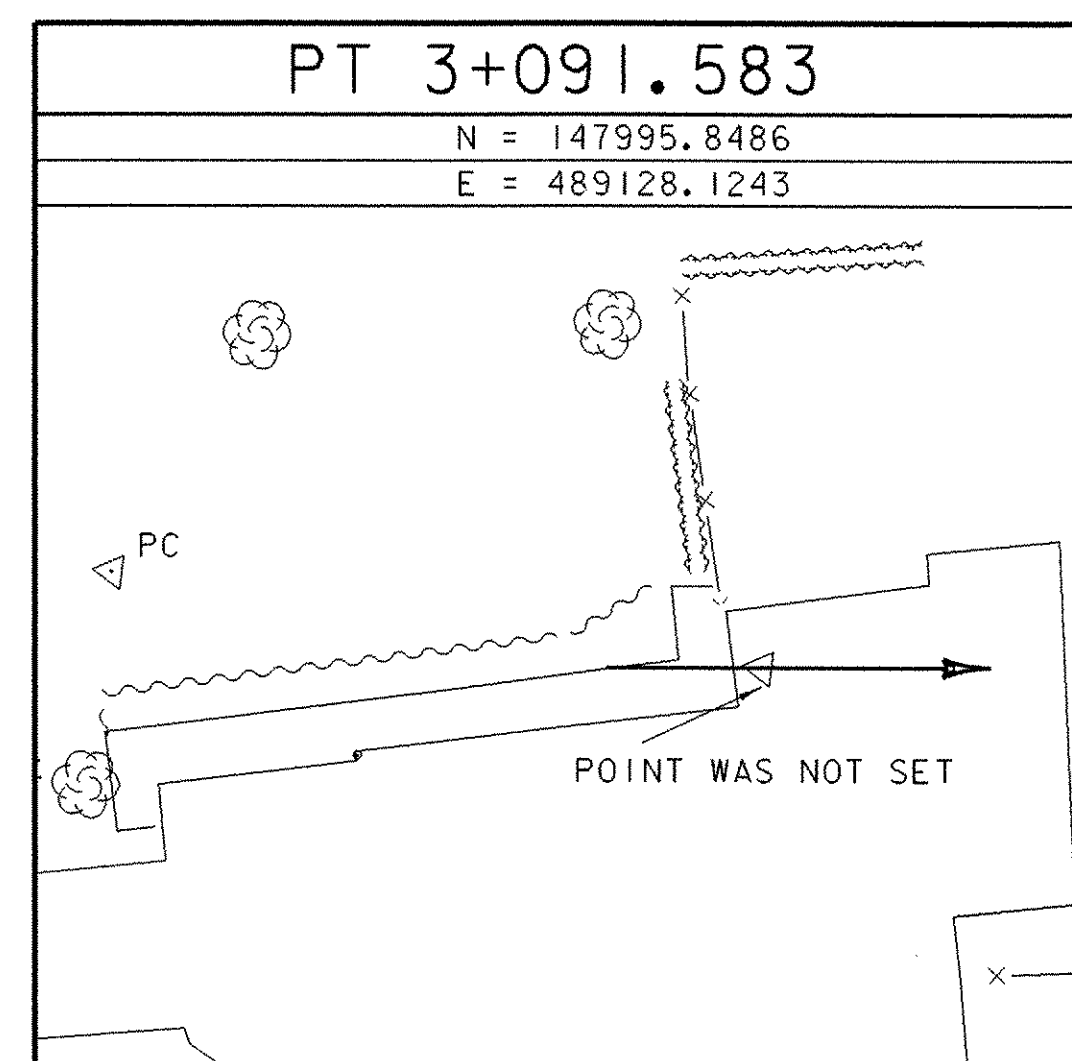
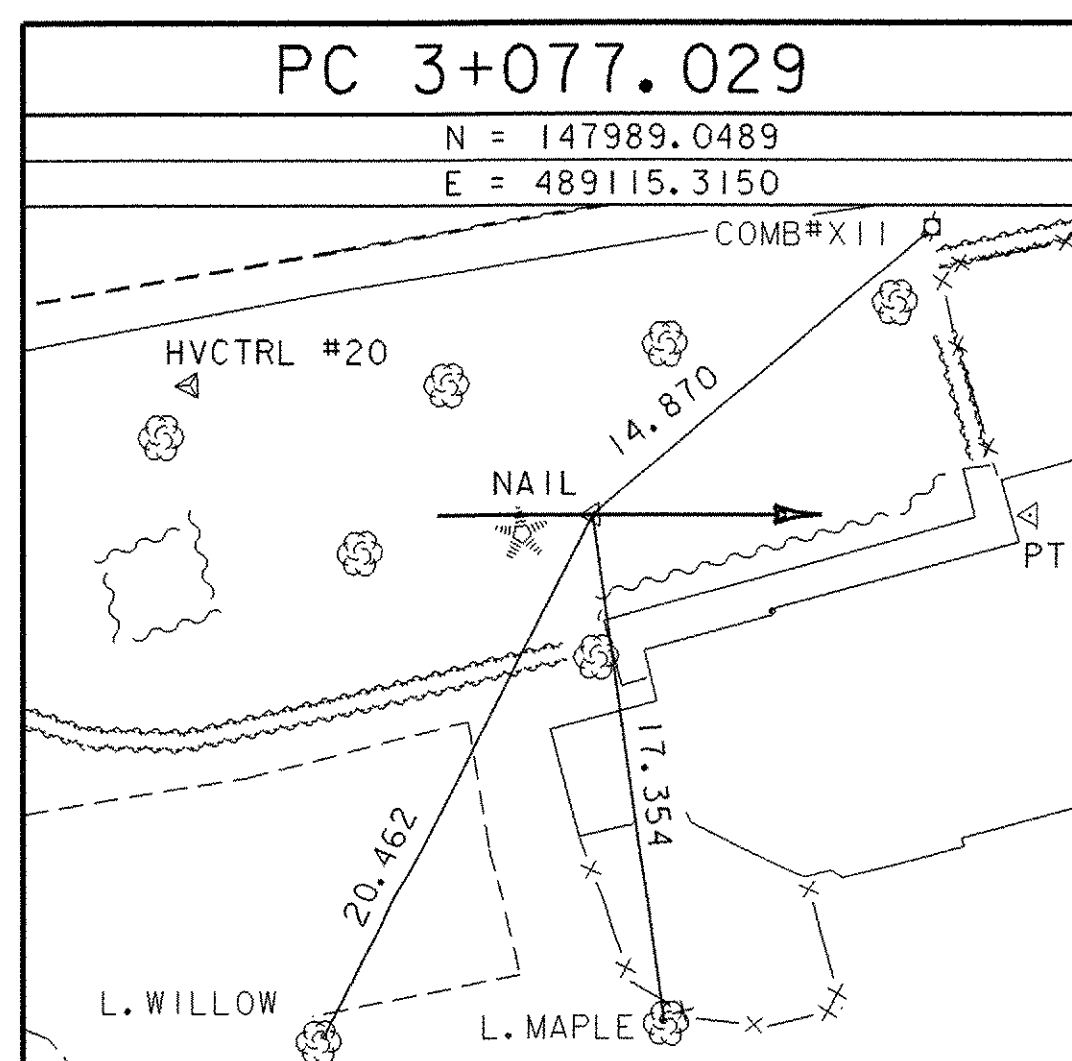
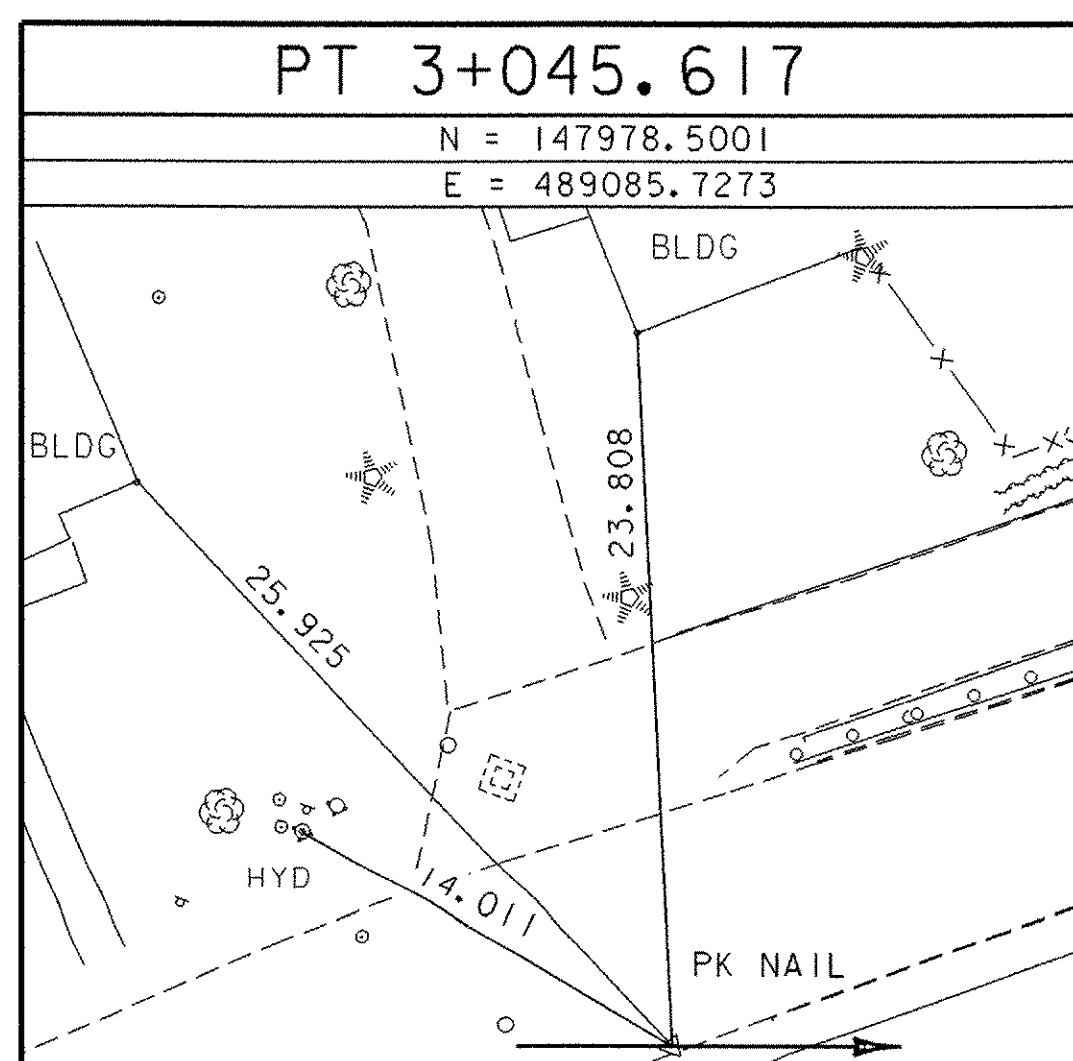
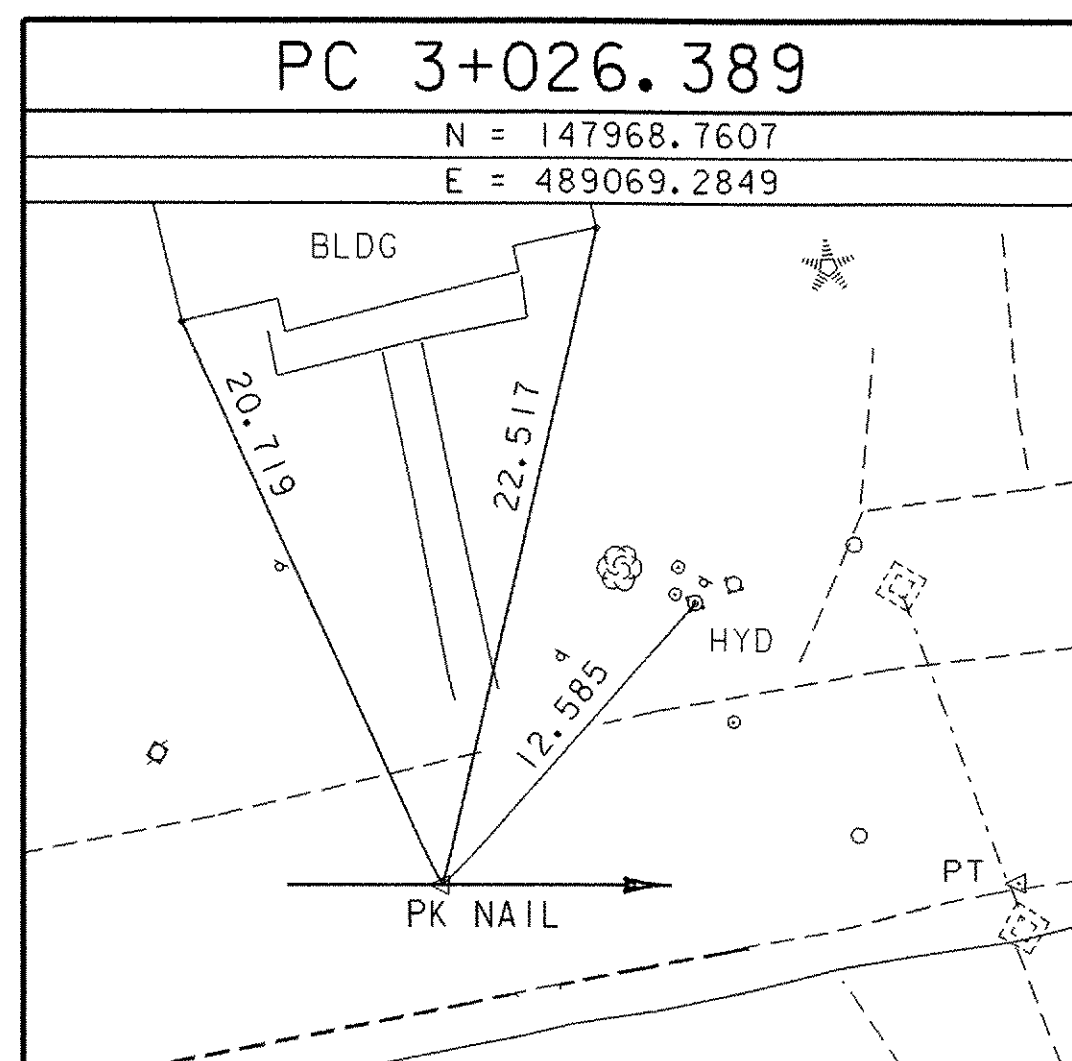
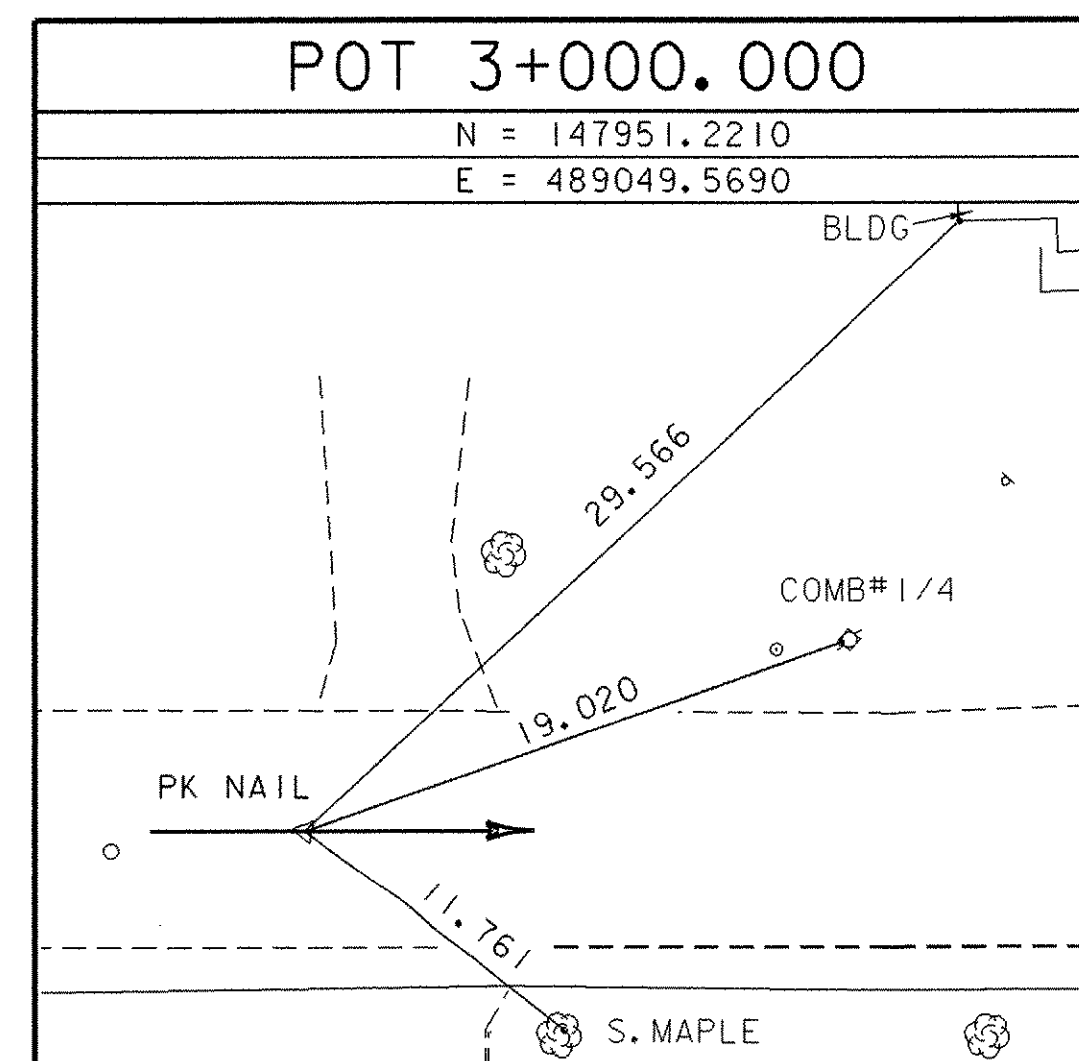
BENCH MARK #1 LOCATION

TRAVERSE TIES



* MAIN TRAVERSE COMPLETED: OCTOBER 04, 1999 BY L. ORVIS & J. HULETT

ALIGNMENT TIES



* ALIGNMENT STAKED ON JANUARY 19, 2002 BY R. GILMAN, P. WINTERS & D. BREER

DATUM	
VERTICAL	NAVD 88
HORIZONTAL	NAD 83/92

PROJECT: BETHEL	PROJECT NO. : BRF 024(33)-C1
DESIGN FILE NAME: 96j250/STRUCTURES/s96j250tie-cl.dgn	PLOT DATE: 09-JUL-2003
IPARM FILE NAME: s96j250tie2-cl.i	SURVEY DATE: 10/99
SURVEYED BY: ORVIS	DRAWN BY: J. HULET
SQUAD LEADER: C. P. WILLIAMS	SHEET: 6 OF 47
ALIGNMENT TIE INFORMATION	