

# STATE OF VERMONT AGENCY OF TRANSPORTATION



## PROPOSED IMPROVEMENT BRIDGE PROJECT

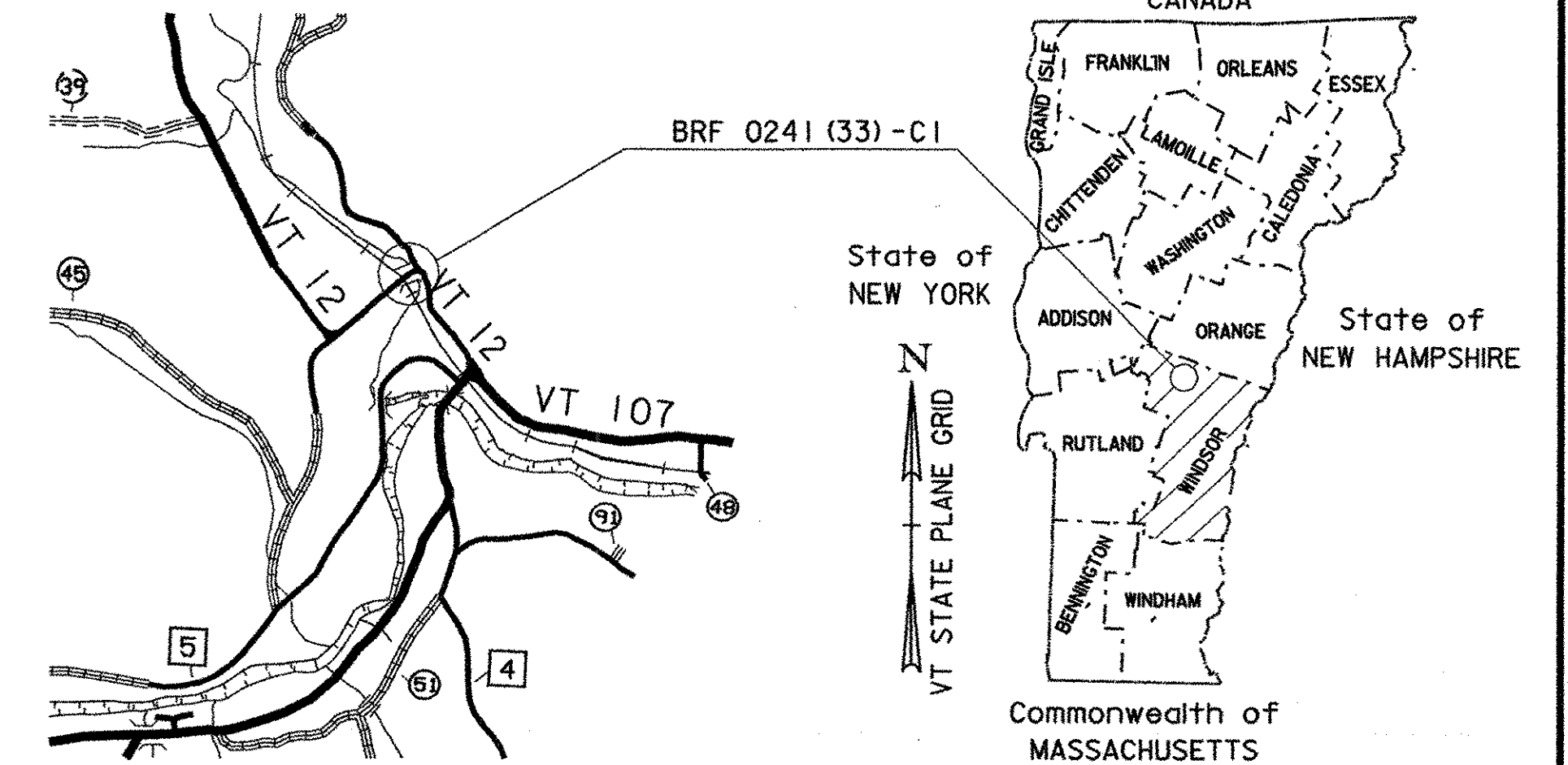
TOWN OF BETHEL  
COUNTY OF WINDSOR

ROUTE NO : VT 12                      BRIDGE NO : 31

PROJECT LOCATION : BEGINNING AT A POINT ON VT 12 IN BETHEL APPROXIMATELY 0.75 KM FROM  
THE VT 107 JUNCTION AND EXTENDING SOUTHERLY ALONG VT 12 FOR A  
DISTANCE OF 130 METERS.

PROJECT DESCRIPTION : CONSTRUCTION OF A TEMPORARY BRIDGE WITH RELATED ROADWAY APPROACH AND CHANNEL WORK

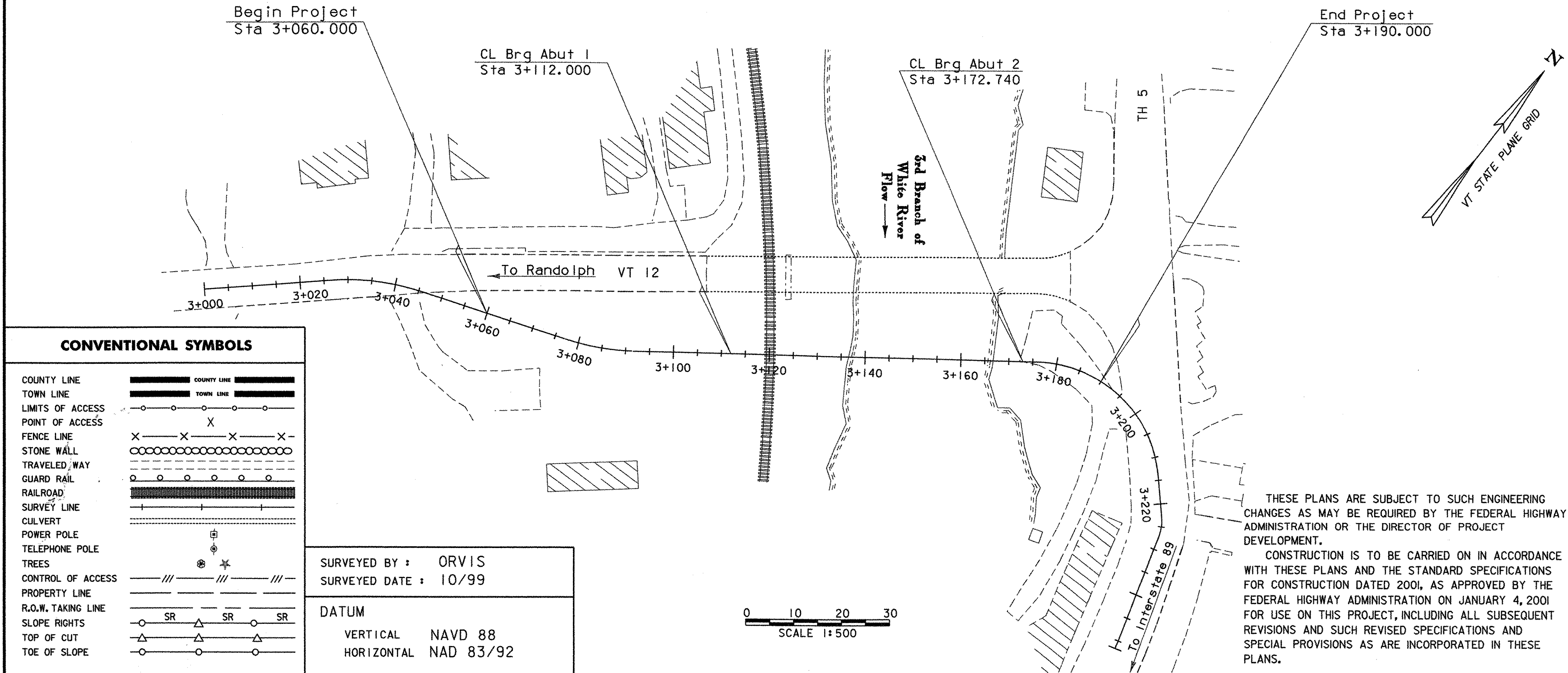
LENGTH OF STRUCTURE :                      60.960 METERS.  
LENGTH OF ROADWAY :                      69.040 METERS.  
LENGTH OF PROJECT :                      130.000 METERS.



**INDEX OF SHEETS**

1. TITLE SHEET
2. INDEX OF SHEETS AND STANDARDS

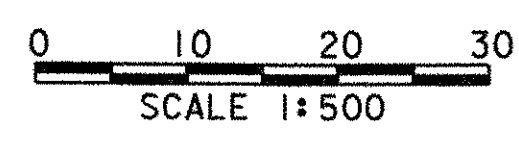
RECORD PLANS	
CONTRACTOR:	WINTerset, INC. - LYNDONVILLE, VT
RESIDENT ENGINEER:	WILL STODDARD
CONSTRUCTION BEGAN:	SEPTEMBER 2, 2003
CONSTRUCTION COMPLETE:	AUGUST 12, 2004
RECORD PLANS BY:	WILL STODDARD & J. GIMORE
I HEREBY CERTIFY THAT ALL THE CONSTRUCTION REQUIRED BY THIS SET OF DRAWINGS HAS BEEN ACCOMPLISHED AS INDICATED HEREIN.	
BY <i>Will Stoddard</i>	RESIDENT ENGINEER
DATE	5-24-07
NOTE: Any further information concerning final quantities, amounts or other details relative to this project may be found at Central Files in the electronic archives.	



CONVENTIONAL SYMBOLS	
COUNTY LINE	
TOWN LINE	
LIMITS OF ACCESS	
POINT OF ACCESS	
FENCE LINE	
STONE WALL	
TRAVELED WAY	
GUARD RAIL	
RAILROAD	
SURVEY LINE	
CULVERT	
POWER POLE	
TELEPHONE POLE	
TREES	
CONTROL OF ACCESS	
PROPERTY LINE	
R.O.W. TAKING LINE	
SLOPE RIGHTS	
TOP OF CUT	
TOE OF SLOPE	

SURVEYED BY : ORVIS  
SURVEYED DATE : 10/99

DATUM  
VERTICAL    NAVD 88  
HORIZONTAL    NAD 83/92



THESE PLANS ARE SUBJECT TO SUCH ENGINEERING CHANGES AS MAY BE REQUIRED BY THE FEDERAL HIGHWAY ADMINISTRATION OR THE DIRECTOR OF PROJECT DEVELOPMENT.

CONSTRUCTION IS TO BE CARRIED ON IN ACCORDANCE WITH THESE PLANS AND THE STANDARD SPECIFICATIONS FOR CONSTRUCTION DATED 2001, AS APPROVED BY THE FEDERAL HIGHWAY ADMINISTRATION ON JANUARY 4, 2001 FOR USE ON THIS PROJECT, INCLUDING ALL SUBSEQUENT REVISIONS AND SUCH REVISED SPECIFICATIONS AND SPECIAL PROVISIONS AS ARE INCORPORATED IN THESE PLANS.

UNLESS NOTED OTHERWISE  
STATIONS ARE IN KILOMETERS  
ELEVATIONS ARE IN METERS  
DIMENSIONS ARE IN MILLIMETERS

DIRECTOR OF PROJECT DEVELOPMENT	
APPROVED: <i>Will Stoddard</i>	DATE 7/3/03
PROJECT MANAGER : C. P. Williams	
PROJECT NAME : Bethel	
PROJECT NUMBER : BRF 0241 (33) - C1	
SHEET 1 OF 47 SHEETS	