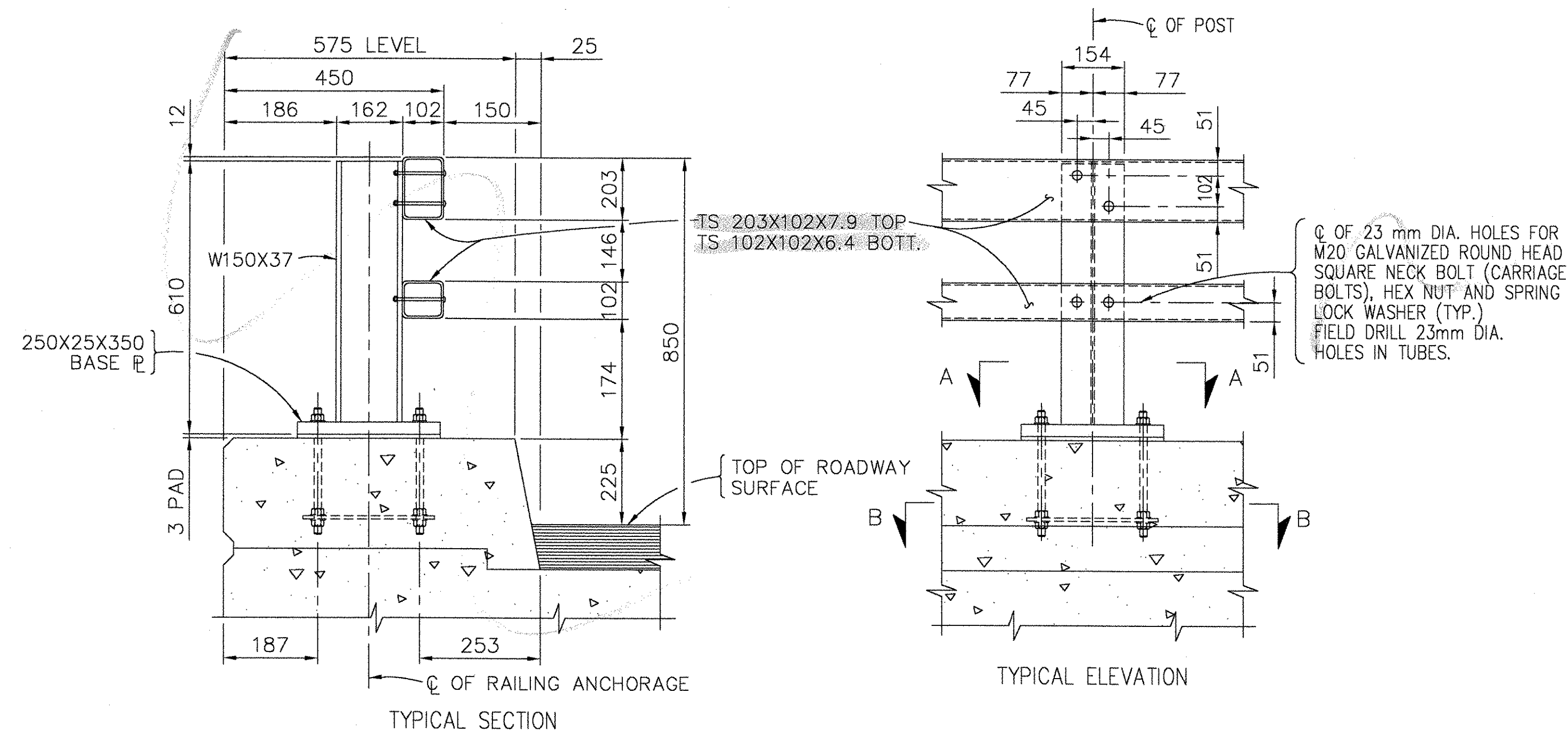
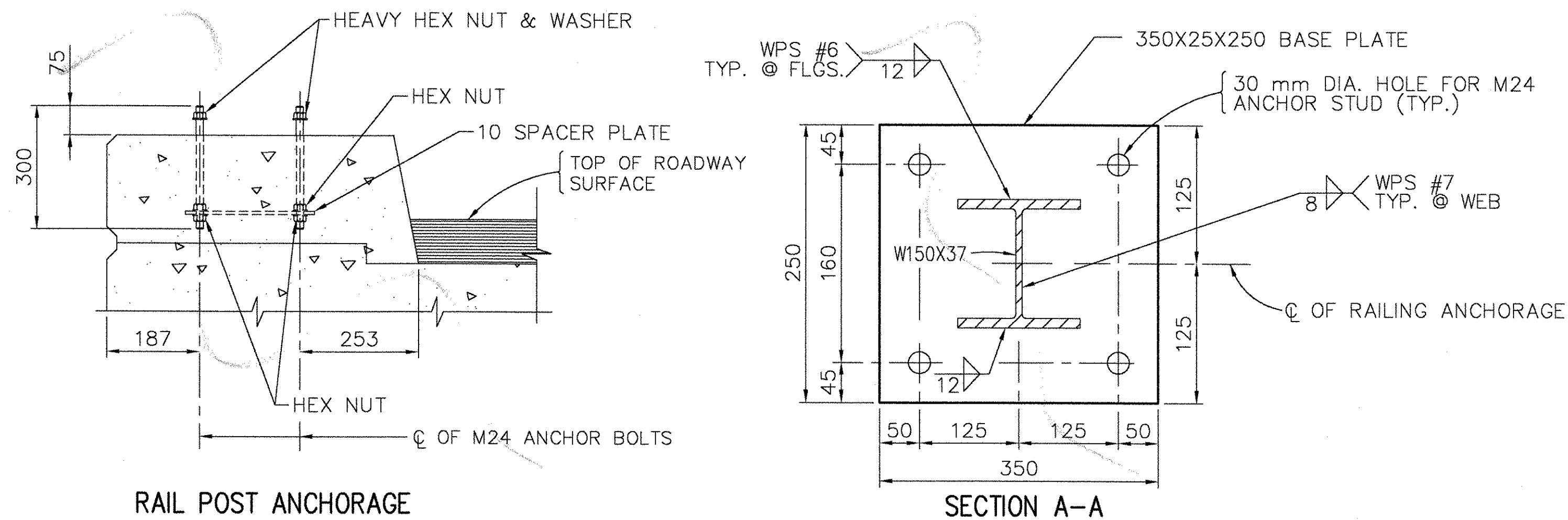


F:\R\Share\Engineering\WIP\VT1004148\22-1004148-E1.dwg 6/25/02 12:18:06

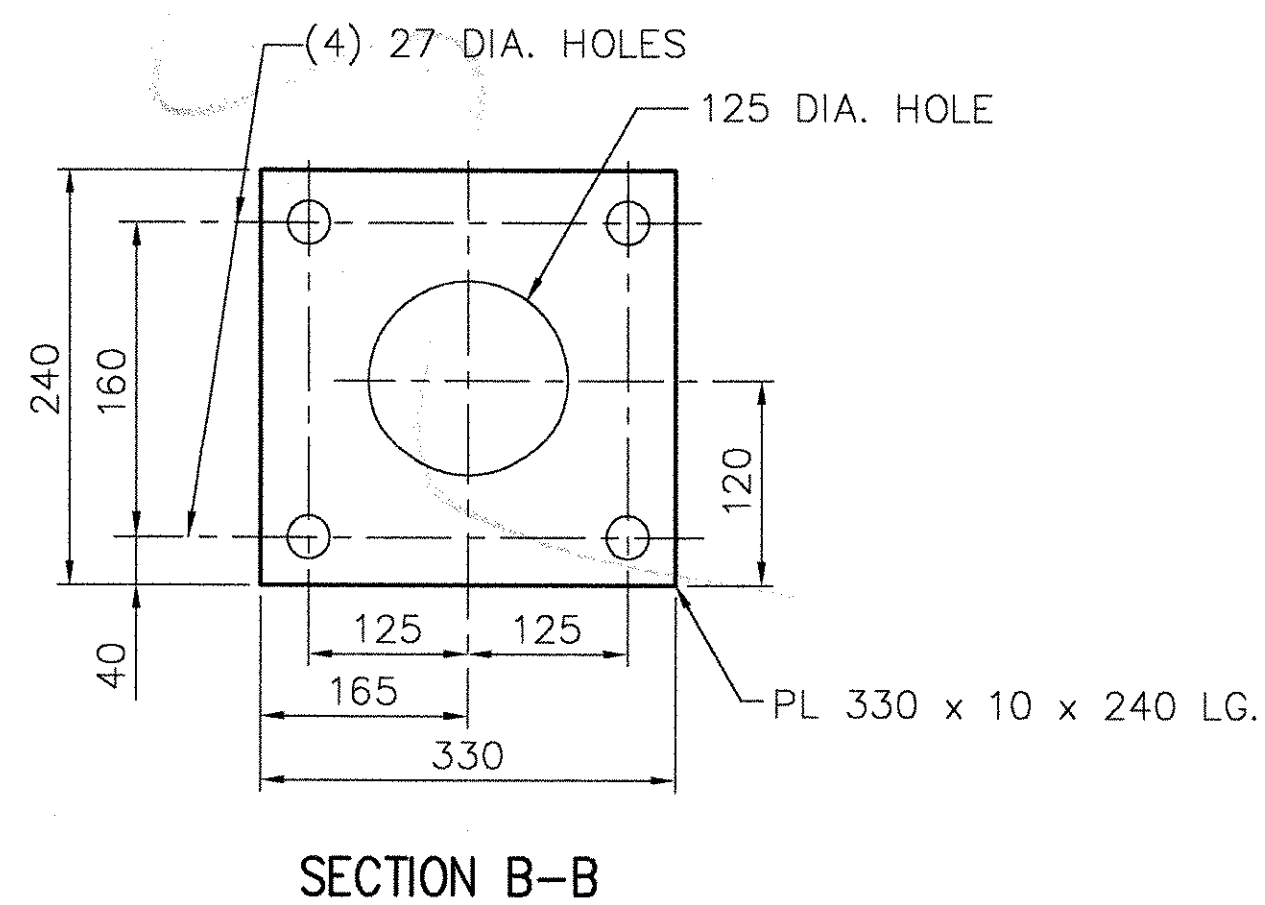


STEEL BRIDGE RAILING
(TWO RAIL - BRUSH CURB)



RAIL POST ANCHORAGE

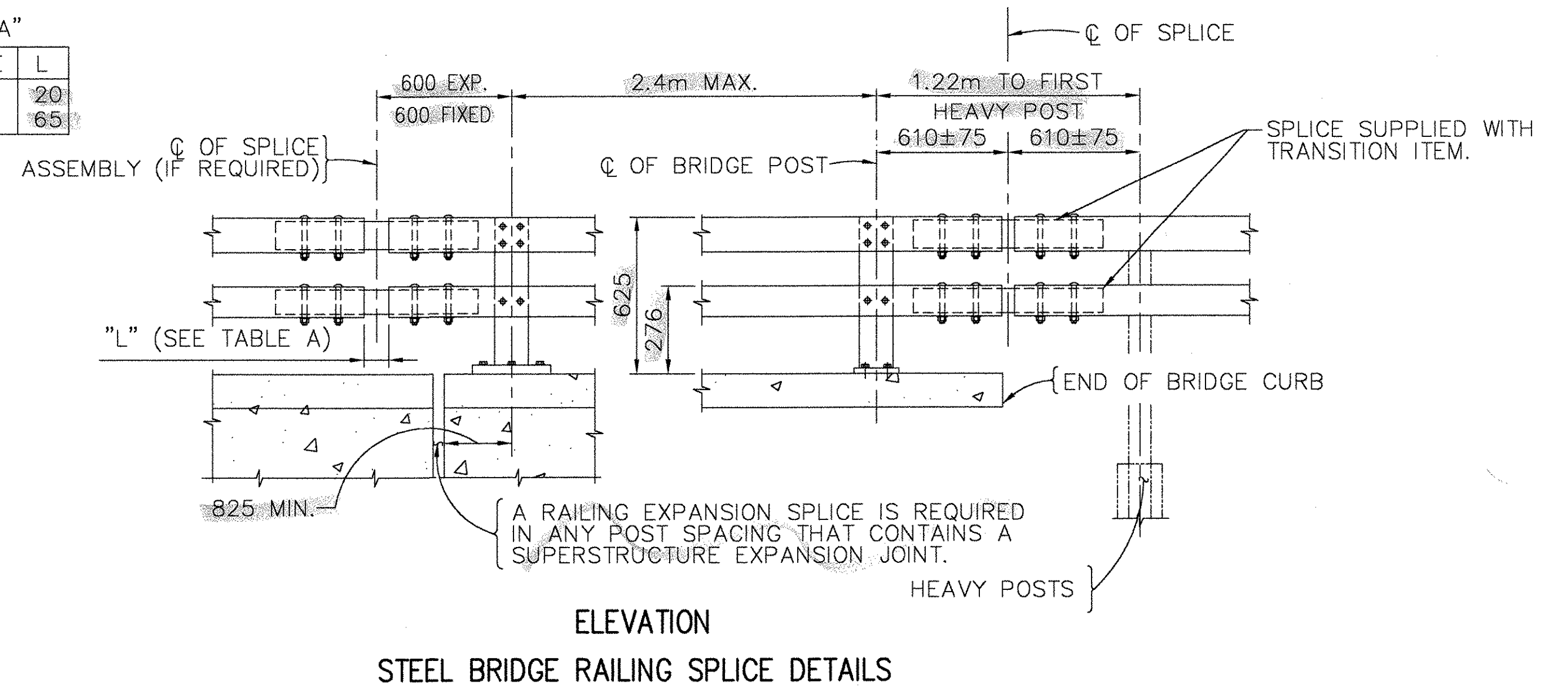
SECTION A-A



SECTION B-B

TABLE "A"

SPLICE TYPE	L
FIX SPLICE	20
EXP. SPLICE	65



ELEVATION
STEEL BRIDGE RAILING SPLICE DETAILS

NOTES:

- 1) ALL WORK AND MATERIALS SHALL CONFORM TO THE PROVISIONS OF SECTION 525 - RAILINGS OF THE STANDARD SPECIFICATIONS FOR CONSTRUCTION.
- 2) TUBING AND POSTS SHALL MEET THE REQUIREMENTS OF SECTION 732 - RAILING MATERIALS OF THE STANDARD SPECIFICATION FOR CONSTRUCTION.
- 3) RAIL POSTS SHALL BE SET NORMAL TO GRADE.
- 4) SECTIONS OF RAIL BAR SHALL BE ATTACHED TO A MINIMUM OF TWO (2) RAIL POST AND PREFERABLY TO AT LEAST FOUR (4) POSTS.
- 5) RAIL BAR EXPANSION JOINTS SHALL BE PROVIDED IN ANY RAIL BAY SPANNING A SUPERSTRUCTURE EXPANSION JOINT. EXPANSION JOINT WIDTH SHALL BE 65mm AT 7°C AND WILL BE ADJUSTED IN THE FIELD BY THE ENGINEER.
- 6) ALL PARTS SHALL BE GALVANIZED AFTER FABRICATION IN ACCORDANCE WITH AASHTO M111, EXCEPT THAT HARDWARE SHALL MEET THE REQUIREMENTS OF AASHTO M232. SURFACE PREPARATION FOR GALVANIZING SHALL MEET SSPC-SP6.
- 7) RAIL POST ANCHORING NUTS SHALL BE TIGHTENED TO A SNUG FIT AND GIVEN AN ADDITIONAL 45° TURN.
- 8) RAIL BARS MAY BE ATTACHED USING M16 AASHTO M164M (TYPE 1) OR M20 ASTM F568m, CLASS 4.6 ROUND HEAD BOLTS INSERTED THROUGH THE FACE OF THE BAR. HOLES IN POSTS SHALL BE 2mm LARGER THAN THE BOLT SIZE.
- 9) HOLES IN RAILS FOR RAIL BAR ATTACHMENT MAY BE FIELD DRILLED. HOLES SHALL BE COATED WITH AN APPROVED ZINC-RICH PAINT PRIOR TO ERECTION.
- 10) IF THERE IS A CONFLICT BETWEEN THESE STANDARD DETAILS AND THE DESIGN DRAWINGS, THE REQUIREMENTS OF THE DESIGN DRAWINGS SHALL BE FOLLOWED.

ISSUED
JUN 25 2002
TRINITY INDUSTRIES, INC.
1170 N. STATE STREET
GIRARD, OHIO 44420

SHOP DRAWING USING
METRIC
DIMENSIONS

APPROVAL DRAWING

NOTE:
ALL DIMS. ARE IN mm U.N.
FOR DETAILS SEE DETAIL DRAWINGS D1, D2, D3 & D4 OF 4 (22) 1004148
FOR RAILING LAYOUT SEE SHT. E2 OF 2 (22) 1004148

Structures Copy

RECEIVED
OK'D BY [Signature] OK'D BY [Signature]
JUL 23 2002
RESUBMIT APPROVED [Signature]
BY [Signature] DATE [Signature]

REV.	CHK'D	BY	DATE	REMARKS
PAY ITEM NUMBER 525.33M ST. BR. RL. 2 RL. NETC				
STATE OF VERMONT AGENCY OF TRANSPORTATION TOWN OF BARTON COUNTY OF ORLEANS US ROUTE 5 OVER NORTHERN VERMONT RAILROAD PROJECT #STP0113(58)S BRIDGE No. 161			DRAWN SAR CHECKED JRS SCALE: N.T.S.	DATE 6/6/02
CUSTOMER NORTHLAND SPECIALTIES			P.O. No. VERBAL	ENG. FILE # 22-1004148-E1
TRINITY INDUSTRIES, INC. HIGHWAY SAFETY PRODUCTS 2525 STEMMONS FREEWAY, DALLAS, TX 75207				SHT.No. E1 OF 2 TRINITY SALES ORDER NO. (22) 1004148 REV. 0

This drawing and the information shown thereon is the sole property of TRINITY INDUSTRIES, INC. Neither the drawing nor such information is to be used for any purpose other than that for which it was specifically furnished by TRINITY INDUSTRIES, INC. nor is any reproduction authorized without written permission.