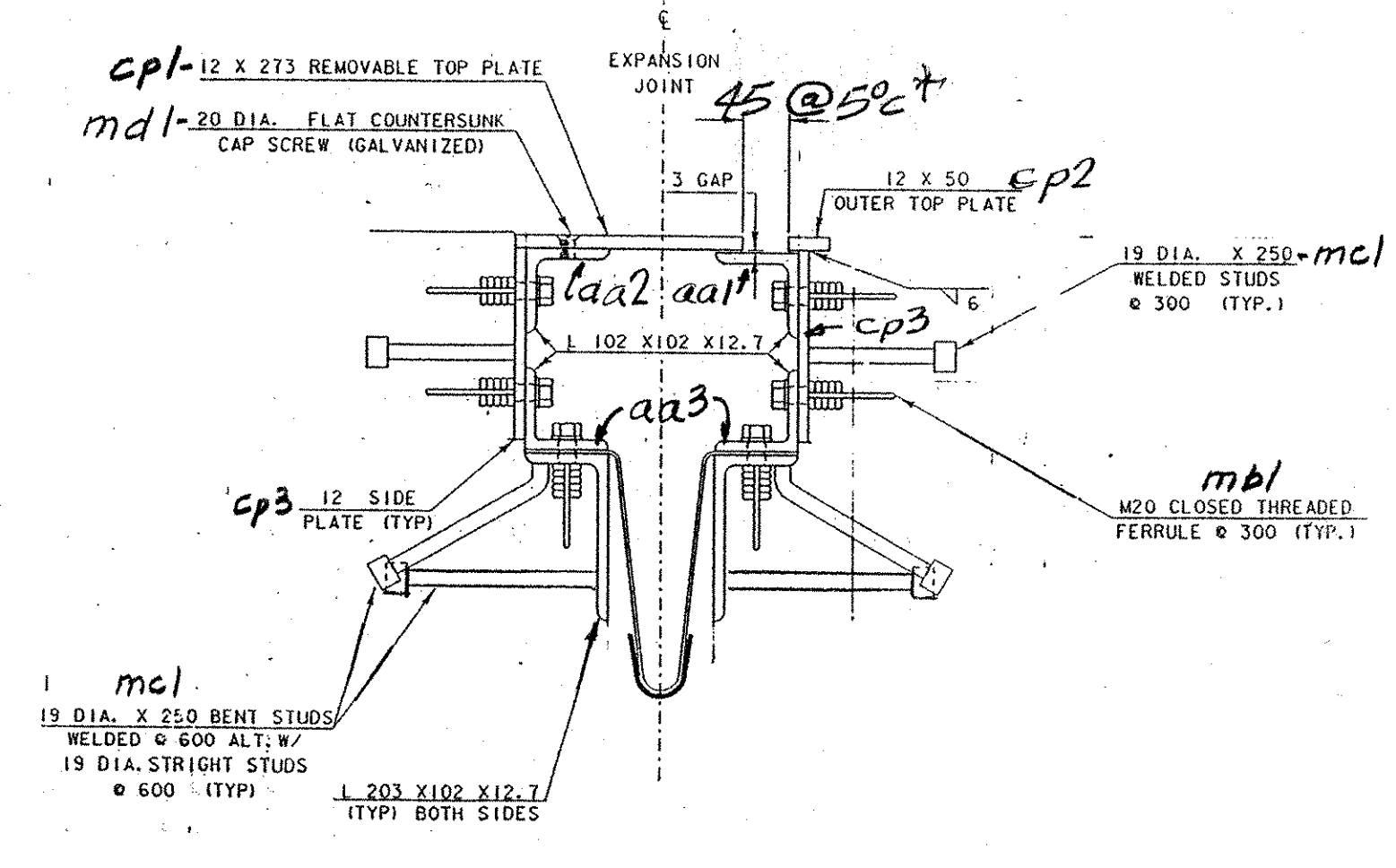
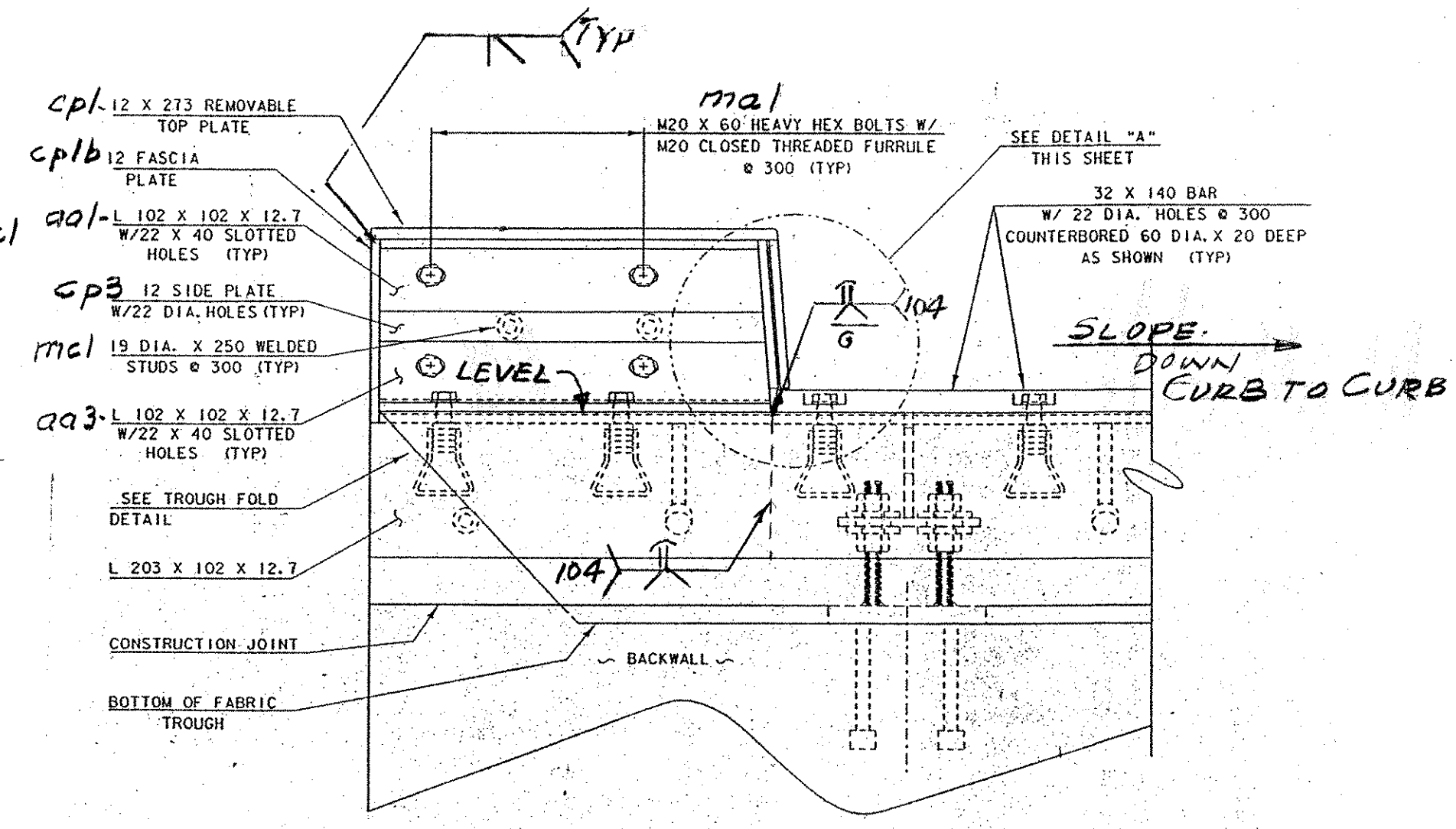


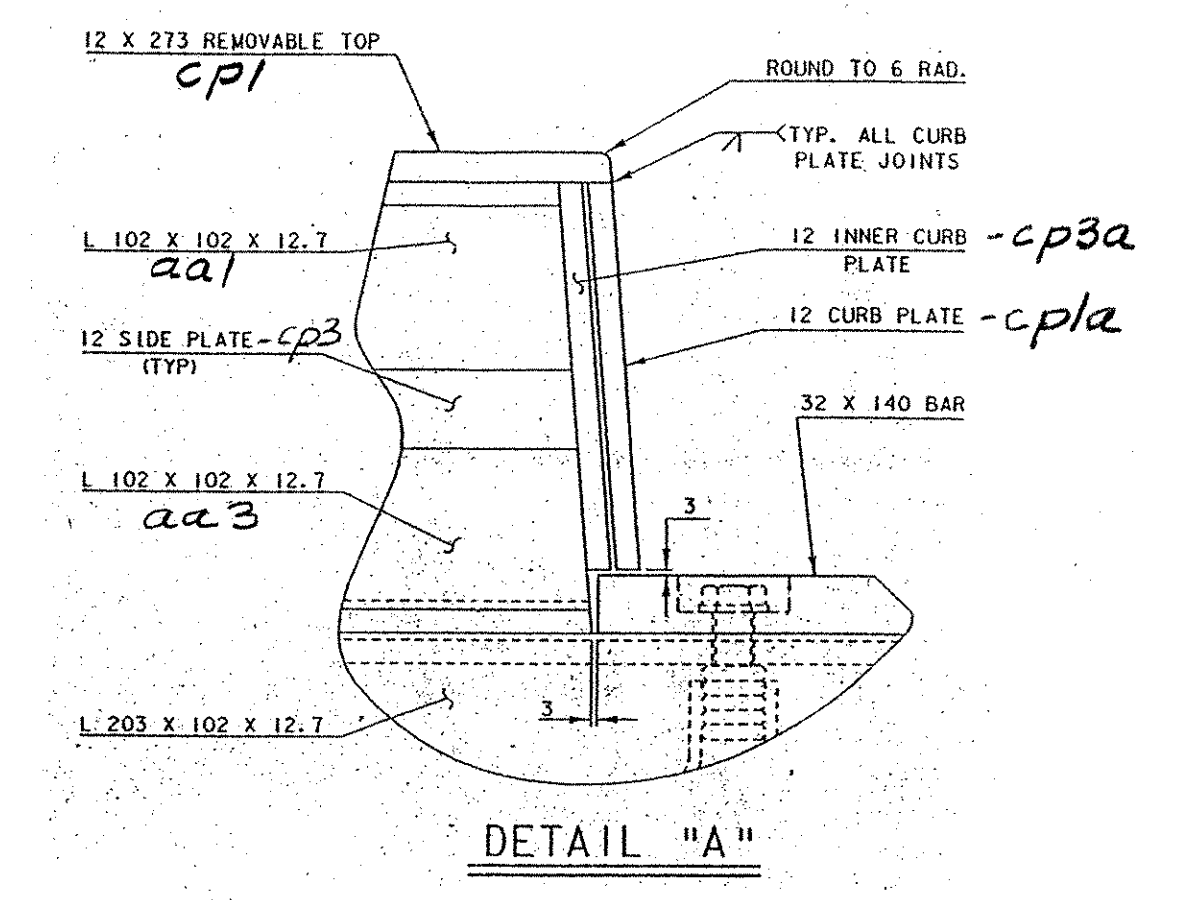
SECTION A-A



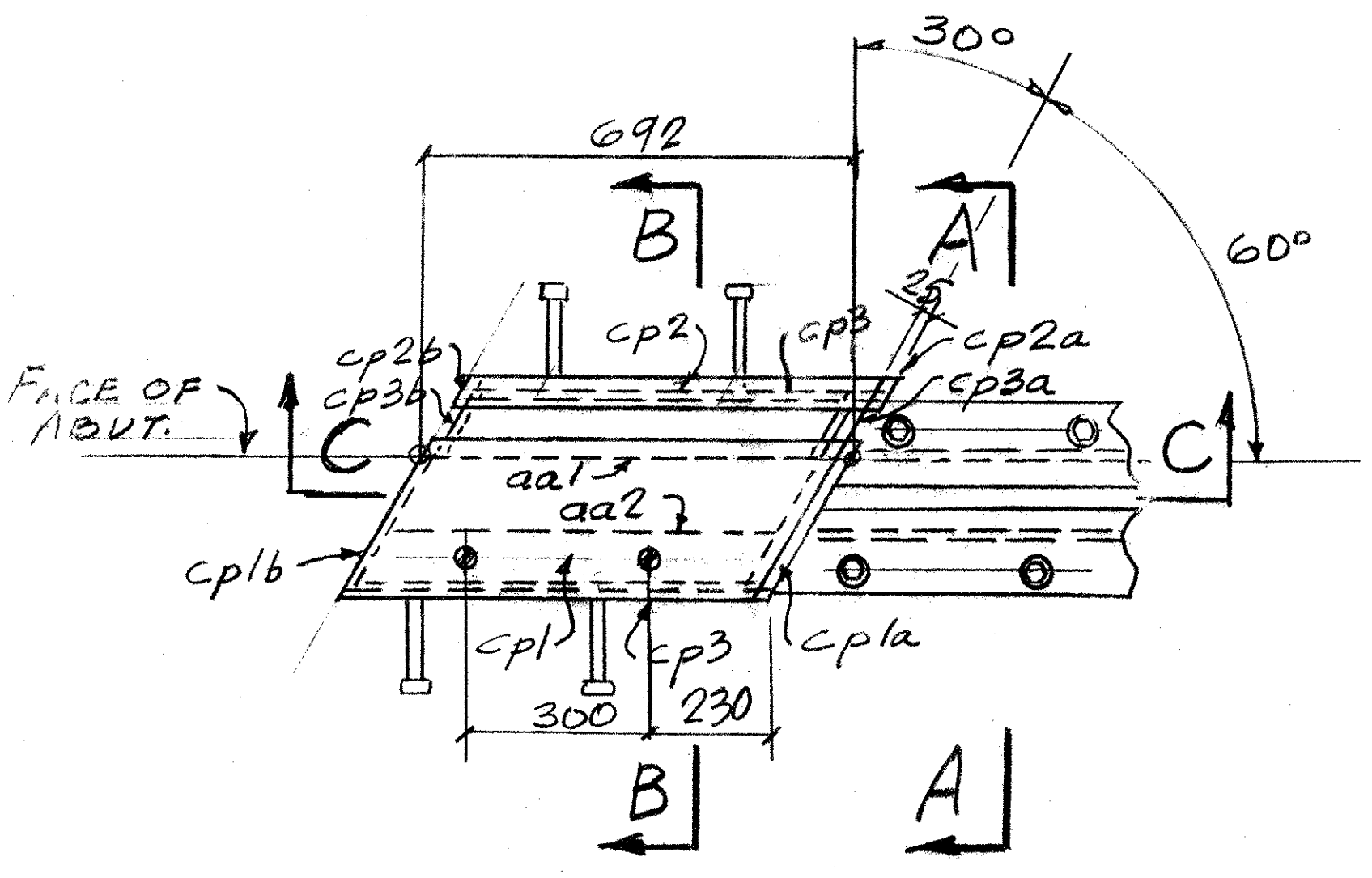
SECTION B-B



SECTION C - C



DETAIL "A"



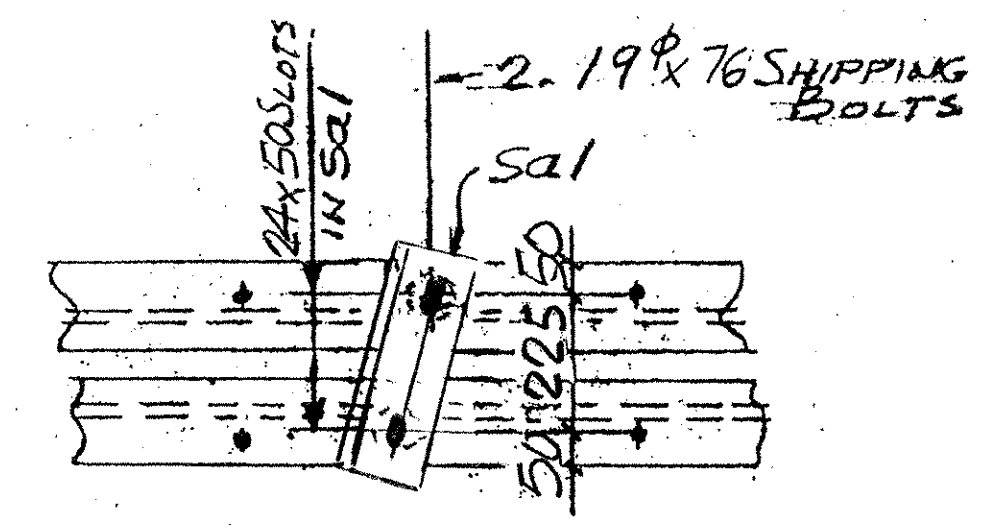
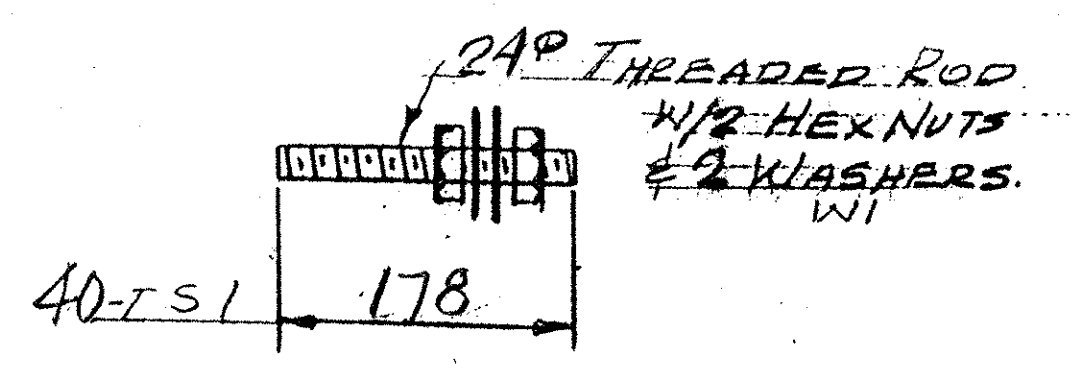
PLAN @ CURB
LEFT END - AS SHOWN
RIGHT END - OPP. HAND

* @ SHOP ASSEMBLY
SEE CONTRACT DWGS FOR FINAL SETTINGS.

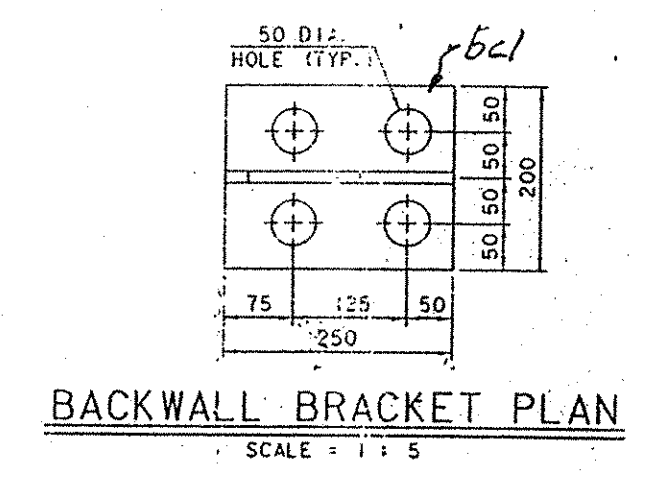
- NOTES
- 1- WHERE POSSIBLE SEAL WELD ALL WELDED JOINTS
 - 2- PRIOR TO GALVANIZING, ALL CORNERS AND EDGES OF STEEL P'S SHALL BE GROUNDED TO 1.6mm RAD.
 - 3- THE EXP. JNT. SHALL BE SHOP ASSEMBLED FOR SHIPPING - SEE SHIPPING DEVICE DET.

WORK THIS DWG. W/ DWG-01

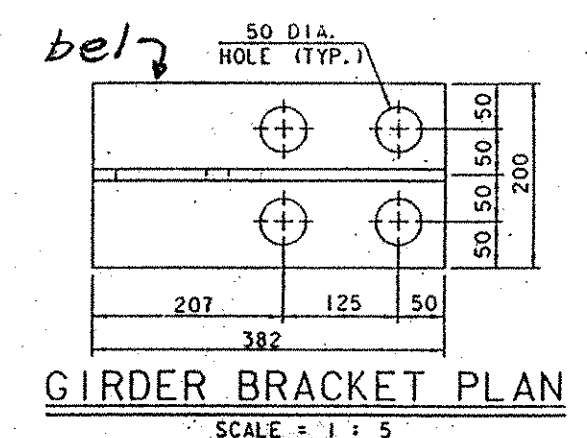
ALL MATERIALS AND CONSTRUCTION SHALL CONFORM TO STATE OF VERMONT AGENCY OF TRANSPORTATION STANDARD SPECIFICATIONS FOR CONSTRUCTION DATED 1990, AND ITS LATEST REVISIONS, AND THE AASHTO STANDARD SPECIFICATIONS FOR HIGHWAY BRIDGES, DATED 1996, AND ITS LATEST REVISIONS.



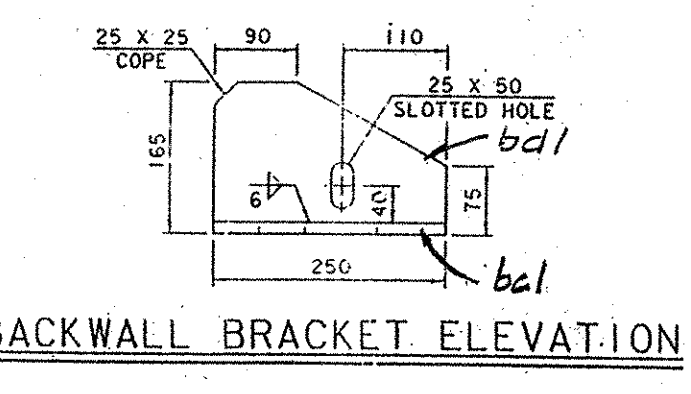
SHIPPING DEVICE
SPACED 1500. OC. MAX.



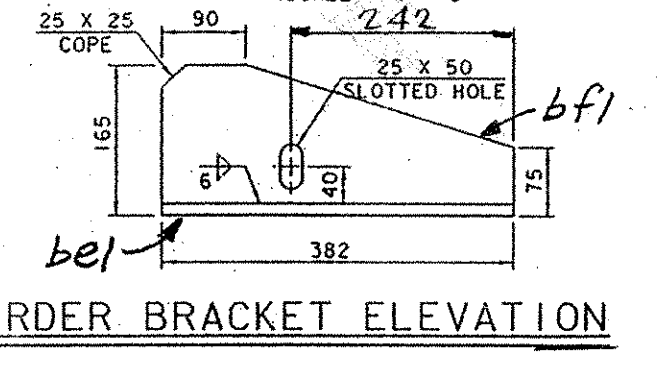
BACKWALL BRACKET PLAN
SCALE 1:1.5



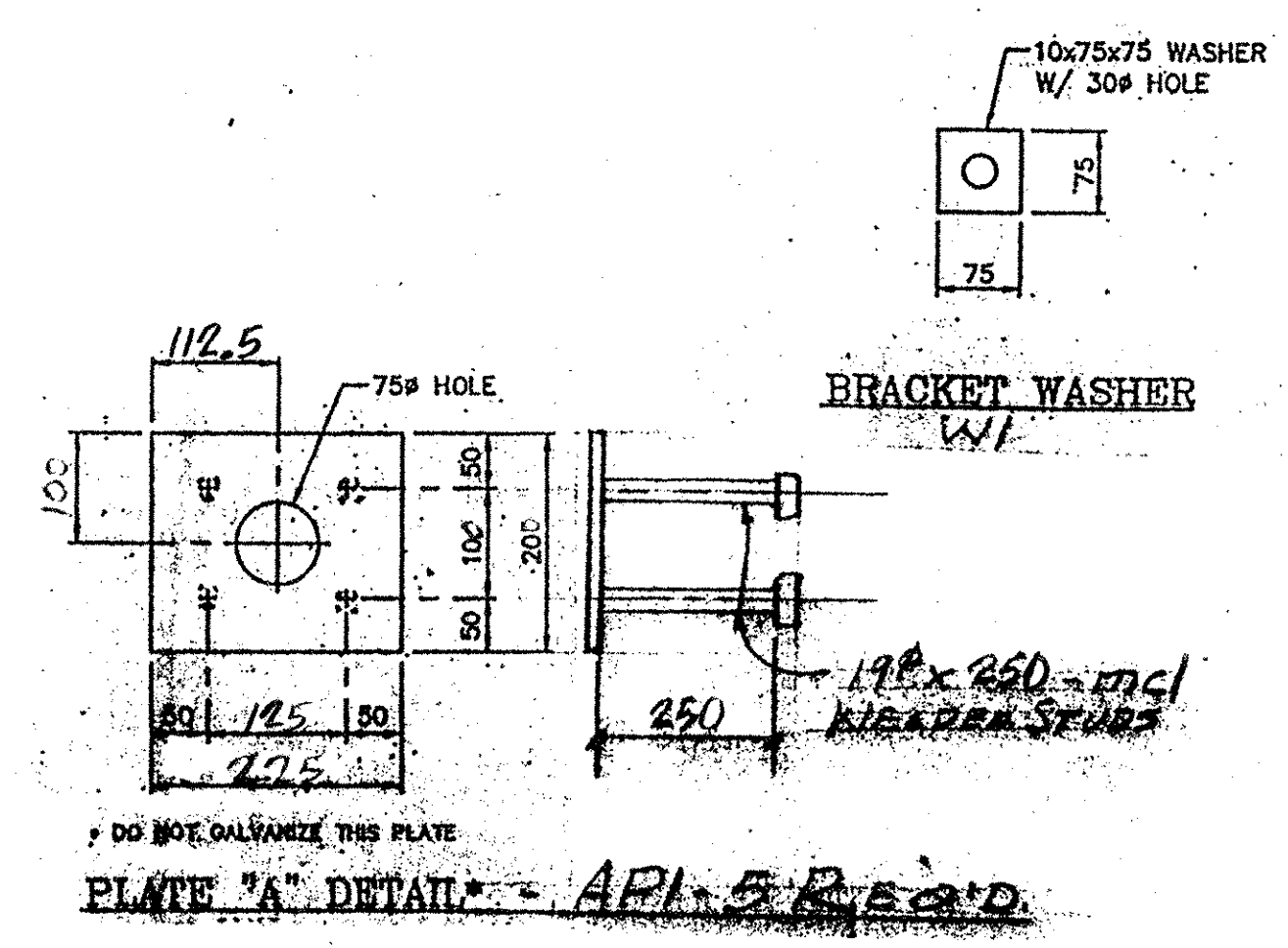
GIRDER BRACKET PLAN
SCALE 1:1.5



BACKWALL BRACKET ELEVATION



GIRDER BRACKET ELEVATION



DO NOT GALVANIZE THIS PLATE
PLATE "A" DETAIL - APL 5 READ

RECEIVED
OCT 14 2002
APPROVED: [Signature]
DATE 10/14/02

PLANS DRAWN USING
METRIC
DIMENSIONS

REV.	REMARKS	DATE	DWN	CHK	APP	Q.A.	NO.	DIA.	LGT	TYPE	WASHER
	OUT FOR APPROVAL	7-26-02									
	OUT FOR APPROVAL	Final 10-7-02									
	ISSUED TO SHOP										
	FIELD & OFFICE										
PROJECT NO. STP-0113(58)5 STATE PROJECT NO.											
MATERIAL: AASHTO M270-6a200 ELECTRODES: PER PROC HOLES: AS NOTED SHOP BOLTS: M20 SURFACE PREP. & PAINT: GALV. AFTER FAB. (ASTM A-123)											
DESCRIPTION: EXP. JOINT- ABUT. #2											
JOB: U.S. ROUTE 5											
BRIDGE No. 161											
BARTON, VT.											
CUSTOMER: WINTERSET											
CASCO BAY STEEL STRUCTURES, INC.											
75 SPRING HILL ROAD SACO, MAINE 04072											
PHONE (207) 282-7360 FAX. (207) 282-1179											