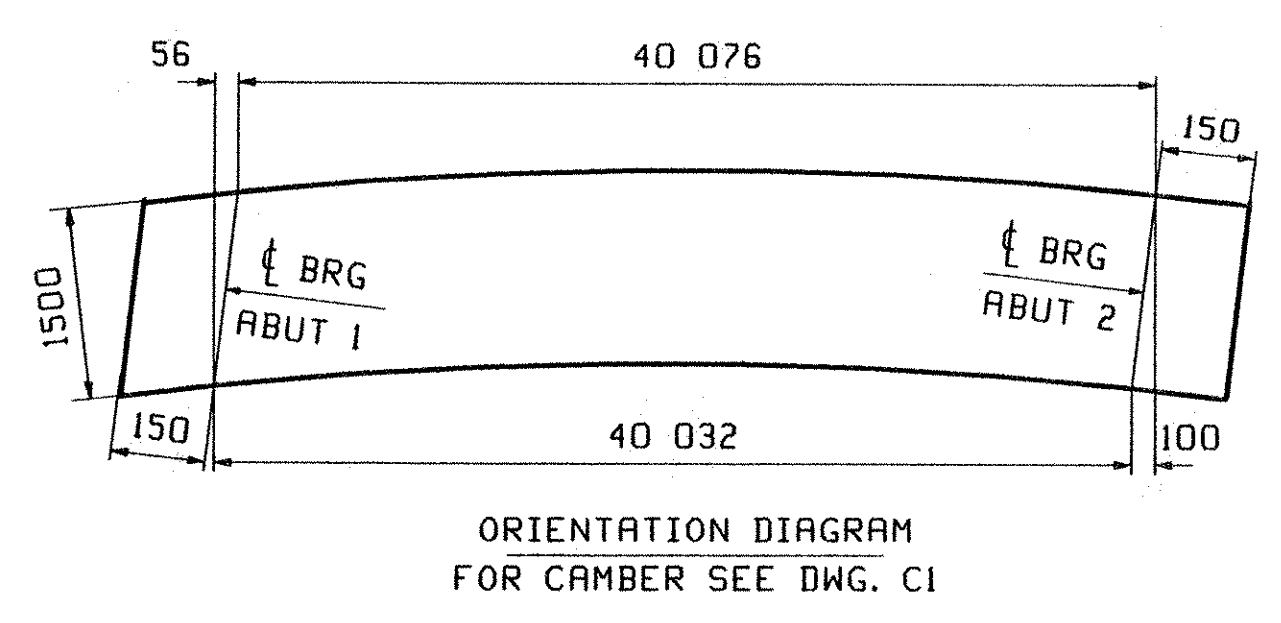
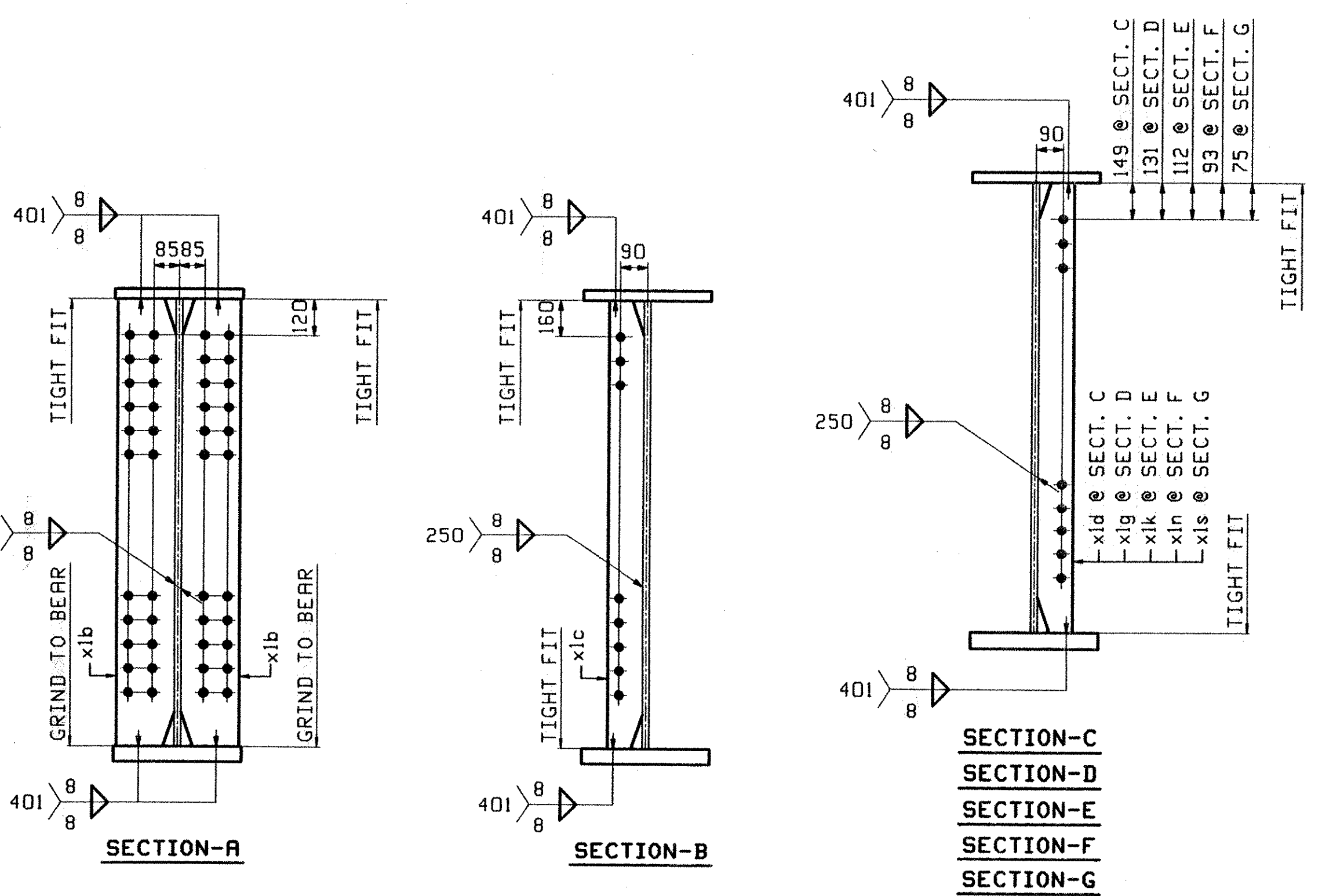


ABM INFO		SHIP	BILL OF MATERIAL				JOB NO.	DRAWING NO.	REV.
PAGE	LINE	MARK	QTY	MARK	MATERIAL	LENGTH	REMARKS	WT	PROCUREMENT NOTES
						m			
		G4A	1		GIRDER				19846 kg 30745 lbs
1	G		1	wa	PL 14x1555	19 869	(M270M-345HT2)	(M2-3)	
1	E		1	wb	PL 14x1559	20 583	(M270M-345HT2)	(M2-3)	
1	J		1	ta	PL 22x426	20 450			
1	L		1	tb	PL 22x426	19 926			
1	C		1	ba	PL 22x426	10 160	(M270M-345HT2)	(M2-3)	
1	A		1	bb	PL 32x426	20 030	(M270M-345HT2)	(M2-3)	
1	C		1	bc	PL 22x426	10 142	(M270M-345HT2)	(M2-3)	
2	B		4	xib	PL 22x200	1 500			
2	C		1	xld	PL 14x127	1 500			
2	C		5	xlc	PL 14x127	1 500			
2	C		1	xlg	PL 14x127	1 500			
2	C		1	xik	PL 14x127	1 500			
2	C		1	xln	PL 14x127	1 500			
2	C		1	xls	PL 14x127	1 500			

ONE - GIRDER - G4A

1. FOR GIRDER STANDARD DETAILS SEE DRAWING X1.
2. FOR CAMBER AND FLANGE DIAGRAMS SEE DRAWING C1.
3. FOR GENERAL NOTES SEE DRAWING GNI.



ORIENTATION DIAGRAM FOR CAMBER SEE DWG. C1

RECEIVED
 OK'D BY: [Signature] OK'D BY: [Signature]
 SEP 04 2002
 RESUBMIT APPROVED: [Signature]
 BY: CPW 9/17/02

OUT FOR APPROVAL	8-30-02										
OUT FOR APPROVAL											
ISSUED TO SHOP											
FIELD & OFFICE											
REV.	REMARKS	DATE	DWN	CHK	APP	Q.A.	NO.	DIA.	LGT	TYPE	WASHER
MATERIAL:	M270M-345W	ELECTRODES:		HOLES:	24mm (15/16)"	SHOP BOLTS:					
SURFACE PREP. & PAINT: -STEEL WITHIN 1500 OF ABUT. 2 END OF GIRDERS SHALL BE PAINTED (SEE GNI) -ALL OTHER STEEL SHALL BE BLAST CLEANED AND LEFT UNPAINTED.											
DESCRIPTION:	GIRDER - G4A					DRAWN BY:	PHG	DATE:	08/23		
JOB:	US Route 5 over Northern Vermont RR					CHKD BY:	JB	DATE:	08/26		
	BRIDGE NO. 161					APPROV BY:					
	BARTON, VERMONT (ORLEANS COUNTY)					SUPERVISOR:	W. J. GATTI				
	CONTRACTOR: WINTERSET					Q.A.:					
PROJ NO.	AC STP 0113 (58) S					JOB NO.:	163	DRG. NO.:	4	REV.:	△
CUSTOMER:	VERMONT AGENCY OF TRANSPORTATION					PHONE:	(207) 282-7360	SACO, MAINE 04072	FAX:	(207) 282-1179	
CASCO BAY STEEL STRUCTURES, INC.											