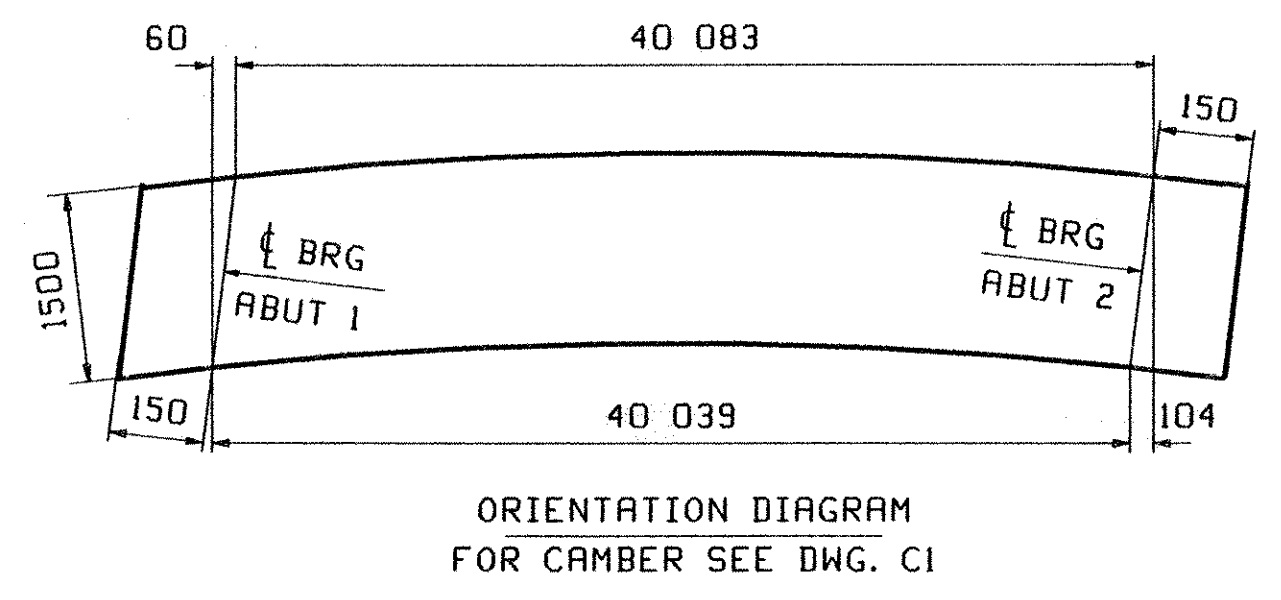
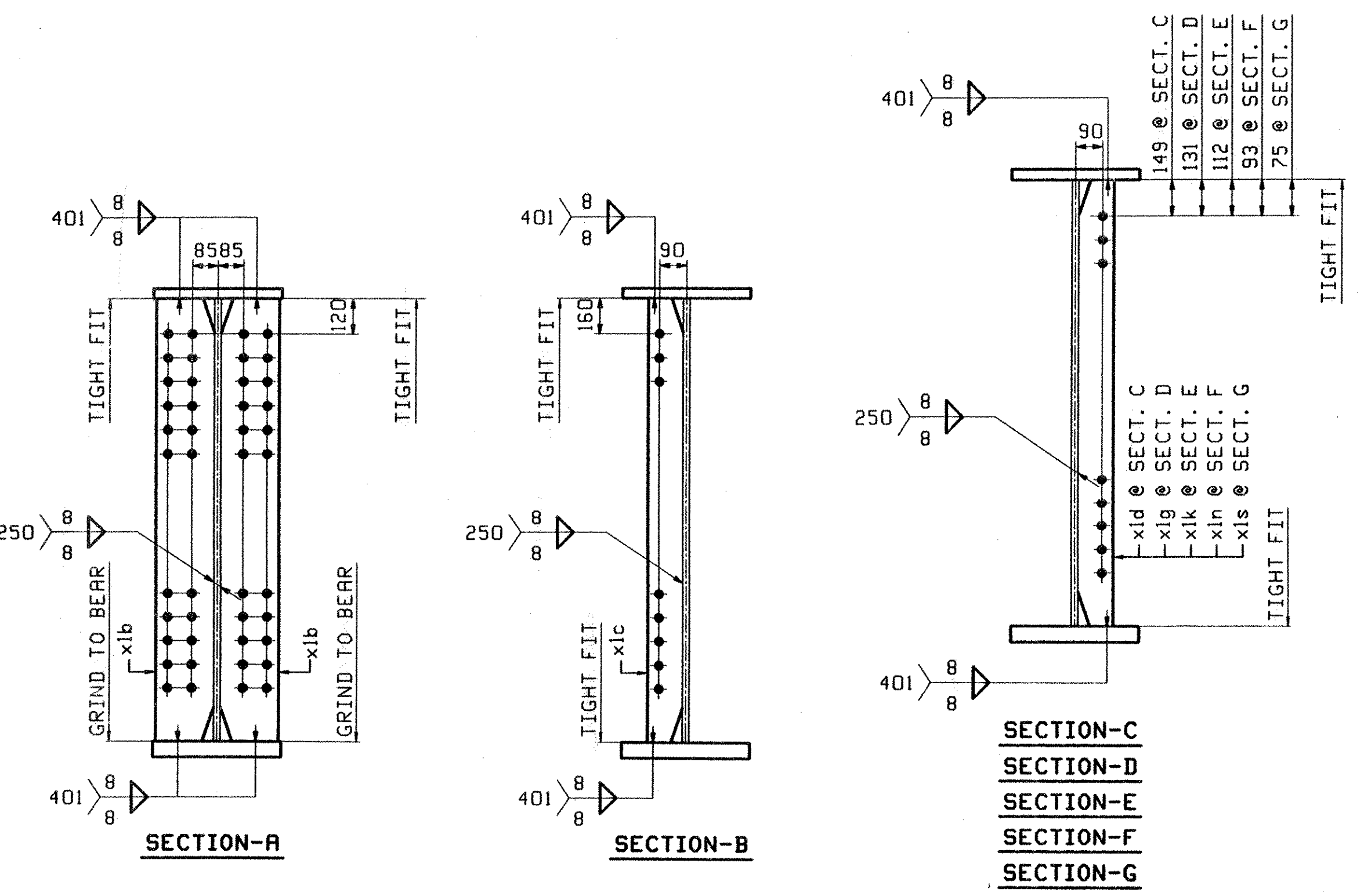


ONE - GIRDER - G3A

1. FOR GIRDER STANDARD DETAILS SEE DRAWING XI.
2. FOR CAMBER AND FLANGE DIAGRAMS SEE DRAWING CI.
3. FOR GENERAL NOTES SEE DRAWING GNI.



| ABM INFO | | SHIP | BILL OF MATERIAL | | | | JOB NO. | DRAWING NO. | REV. |
|----------|------|------|------------------|------|------------|--------|----------------|-------------|-------------------|
| PAGE | LINE | MARK | QTY | MARK | MATERIAL | LENGTH | REMARKS | WT | PROCUREMENT NOTES |
| | | | | | | m | | | |
| | | G3A | 1 | | GIRDER | | | | 13948 30282 |
| 1 | G | | 1 | wa | PL 14x1555 | 19 869 | (M270M-345MT2) | | (W2-2) |
| 1 | E | | 1 | wb | PL 14x1559 | 20 594 | (M270M-345MT2) | | (W2-2) |
| 1 | J | | 1 | ta | PL 22x426 | 20 450 | | | |
| 1 | L | | 1 | tb | PL 22x426 | 19 933 | | | |
| 1 | C | | 1 | ba | PL 22x426 | 10 160 | (M270M-345MT2) | | (W2-2) |
| 1 | A | | 1 | bb | PL 32x426 | 20 030 | (M270M-345MT2) | | (W2-2) |
| 1 | C | | 1 | bc | PL 22x426 | 10 149 | (M270M-345MT2) | | (W2-2) |
| 2 | B | | 4 | x1b | PL 22x200 | 1 500 | | | |
| 2 | C | | 1 | x1d | PL 14x127 | 1 500 | | | |
| 2 | C | | 5 | x1c | PL 14x127 | 1 500 | | | |
| 2 | C | | 1 | x1g | PL 14x127 | 1 500 | | | |
| 2 | C | | 1 | x1k | PL 14x127 | 1 500 | | | |
| 2 | C | | 1 | x1n | PL 14x127 | 1 500 | | | |
| 2 | C | | 1 | x1s | PL 14x127 | 1 500 | | | |

| | | | | | | | | | | | |
|--|--|------|-----|-----|-----|------|-----|------------|-------------|------|--------|
| OUT FOR APPROVAL | 8-50-02 | | | | | | | | | | |
| OUT FOR APPROVAL | | | | | | | | | | | |
| ISSUED TO SHOP | | | | | | | | | | | |
| FIELD & OFFICE | | | | | | | | | | | |
| REV. | REMARKS | DATE | DWN | CHK | APP | Q.A. | NO. | DIA. | LGT | TYPE | WASHER |
| | MATERIAL: | | | | | | | | | | |
| | M270M-345W | | | | | | | | | | |
| | ELECTRODES: | | | | | | | | | | |
| | | | | | | | | | | | |
| | HOLES: | | | | | | | | | | |
| | 24 mm (15/16) | | | | | | | | | | |
| | SHOP BOLTS: | | | | | | | | | | |
| | | | | | | | | | | | |
| SURFACE PREP. & PAINT: -STEEL WITHIN 1500 OF ABUT. 2 END OF GIRDERS SHALL BE PAINTED (SEE GNI) -ALL OTHER STEEL SHALL BE BLAST CLEANED AND LEFT UNPAINTED. | | | | | | | | | | | |
| DESCRIPTION: | GIRDER - G3A | | | | | | | DRAWN BY | DATE | | |
| JOB: | US Route 5 over Northern Vermont RR | | | | | | | PHG | 08/23 | | |
| | BRIDGE NO. 161 | | | | | | | CHKD BY | | | |
| | BARTON, VERMONT (ORLEANS COUNTY) | | | | | | | JB | 08/26 | | |
| | CONTRACTOR: WINTERSET | | | | | | | APPROV BY | | | |
| | | | | | | | | SUPERVISOR | W. J. GATTI | | |
| PROJ NO. | AC STP 0113 (58) S | | | | | | | Q.A. | | | |
| CUSTOMER: | VERMONT AGENCY OF TRANSPORTATION | | | | | | | JOB NO. | DRG. NO. | | |
| | CASCO BAY STEEL STRUCTURES, INC. | | | | | | | 163 | 3 | | |
| | 75 SPRING HILL ROAD SACO, MAINE 04072 | | | | | | | | | | |
| | PHONE (207) 282-7360 FAX. (207) 282-1179 | | | | | | | | | | |

RECEIVED
 OK'D BY [Signature] OK'D BY [Signature]
 SEP 04 2002
 RESUBMIT APPROVED [Signature]
 BY CPW DATE 9/17/02