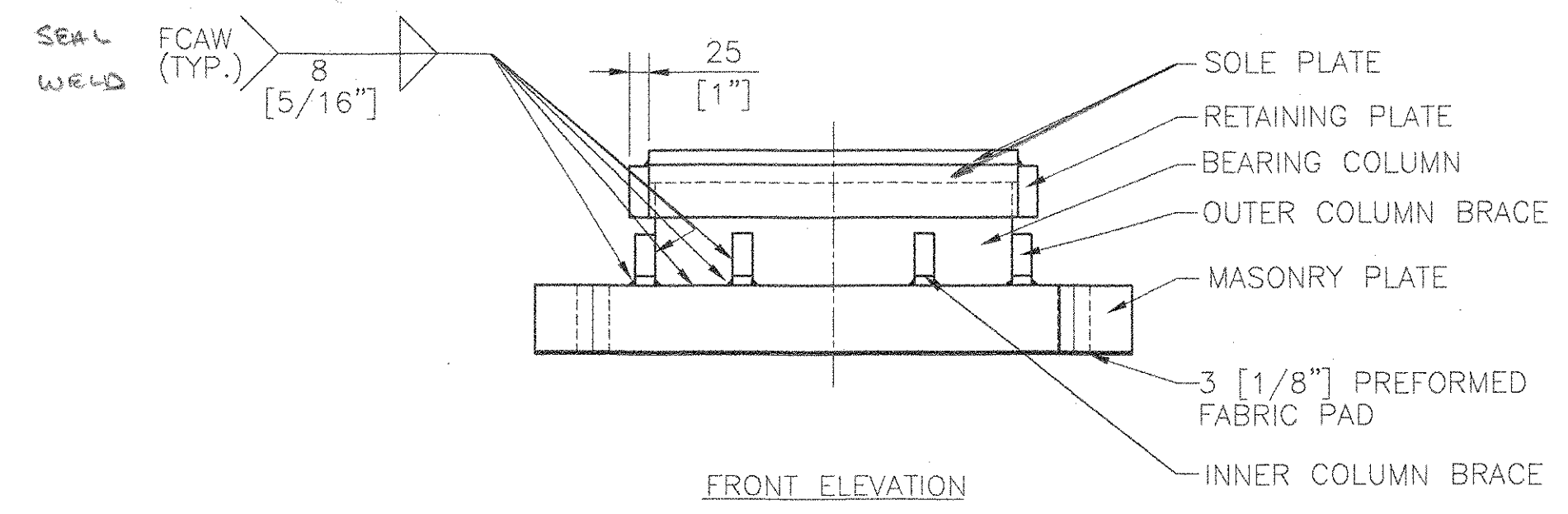
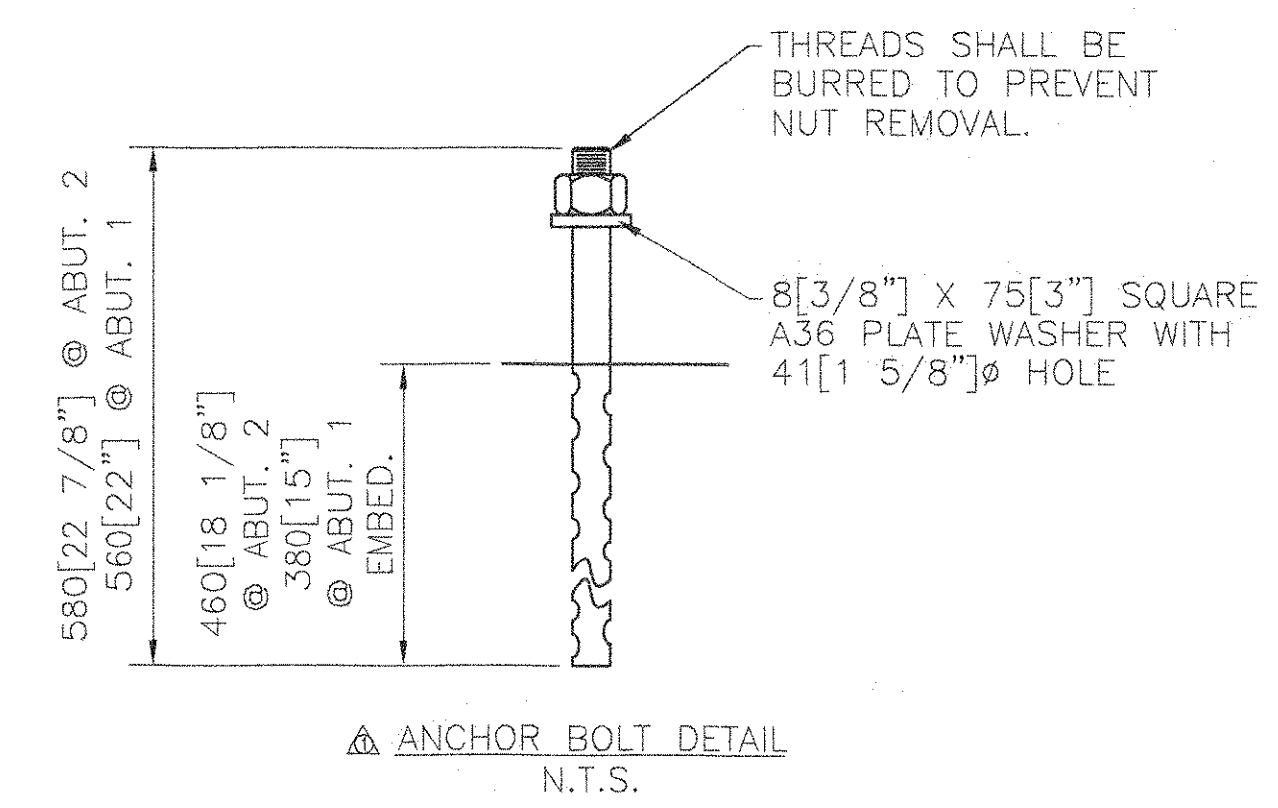
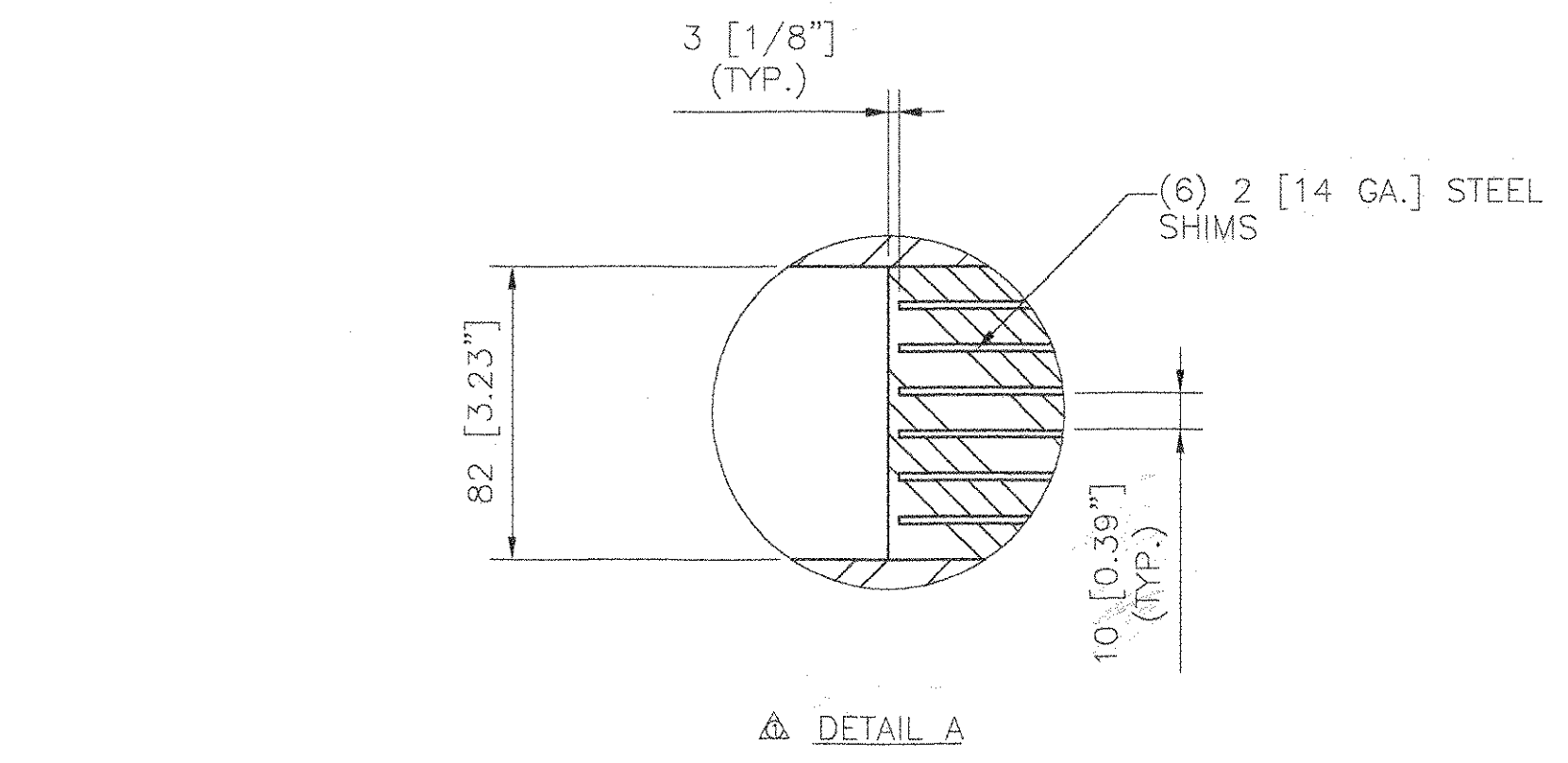
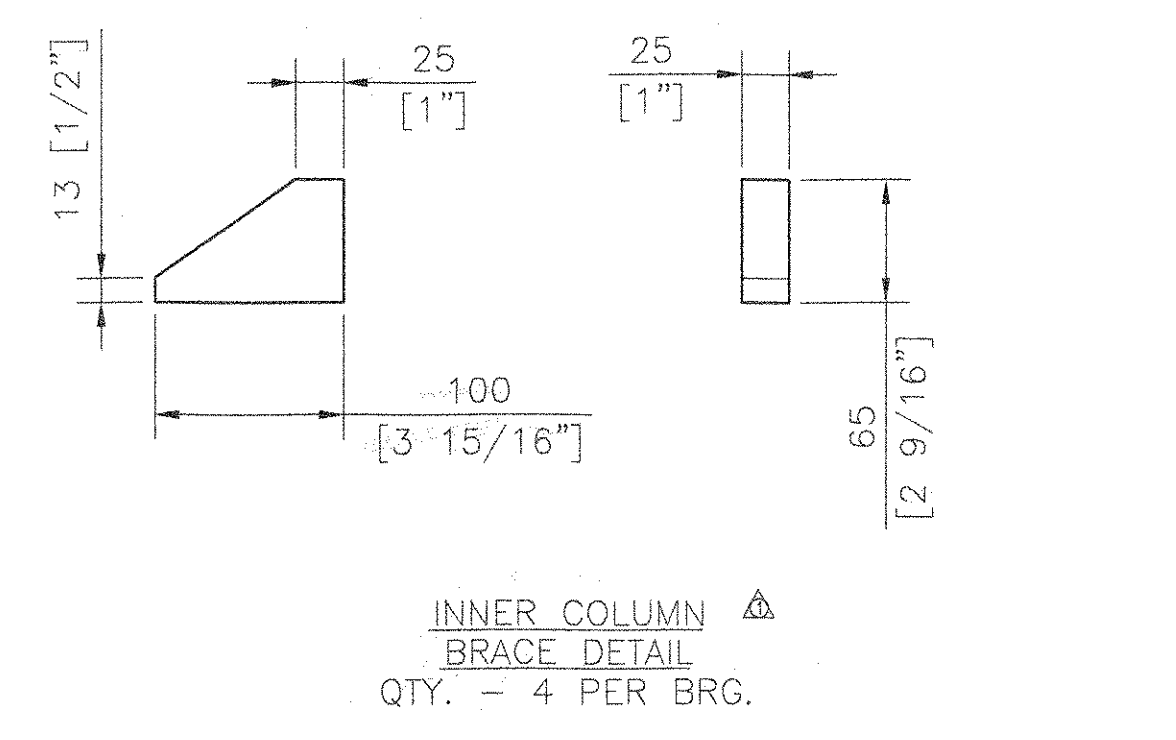
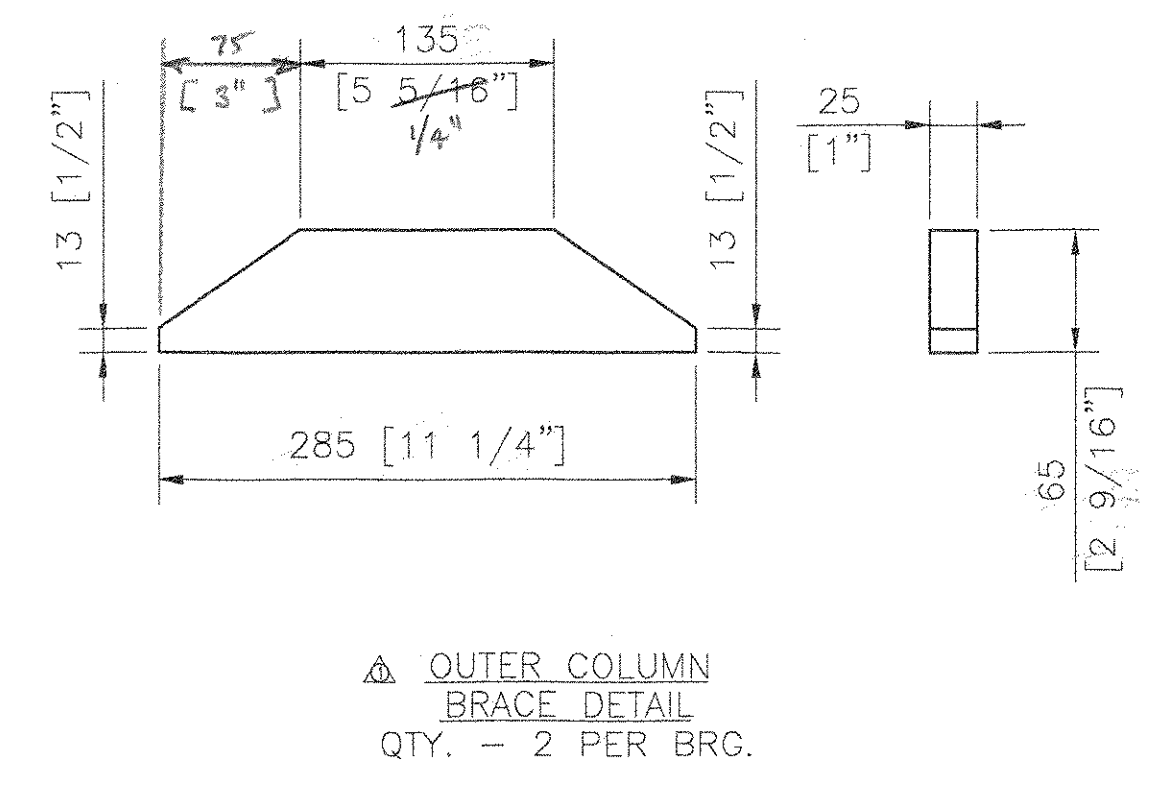
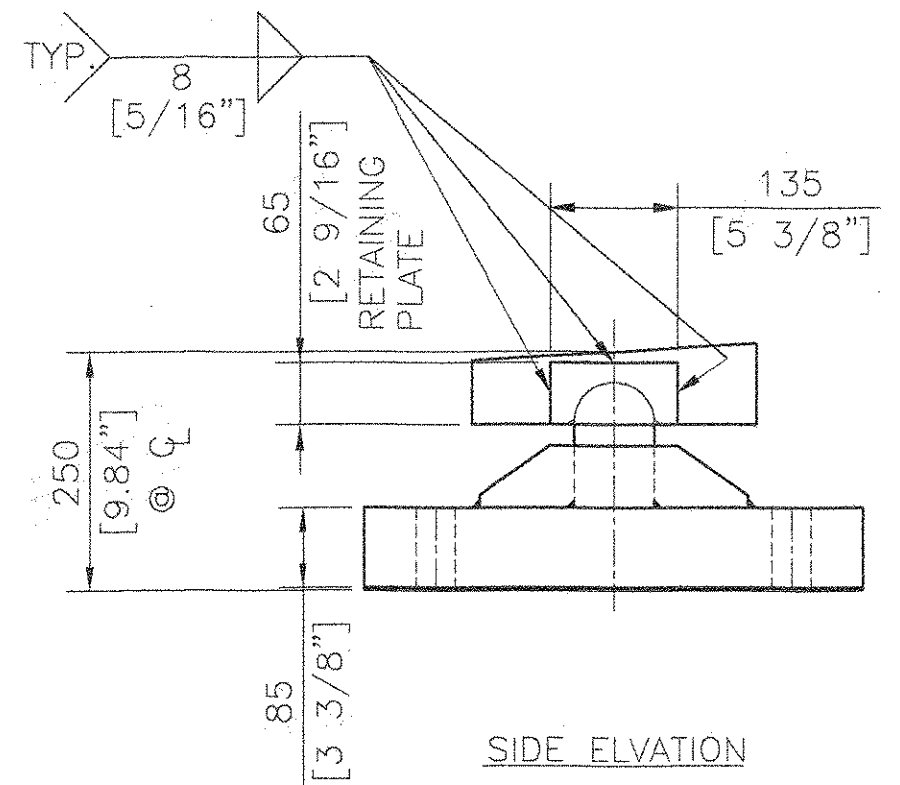


ELASTOMERIC BEARING
LOCATION - ABUTMENT 2, G1-G5
QUANTITY - 5
DESIGN LOAD PER BEARING:
RDL = 414.65 KN[93.22 KIPS]
RLL = 282.63 KN[63.54 KIPS]
DESIGN ROTATION - 0.18 RADS.

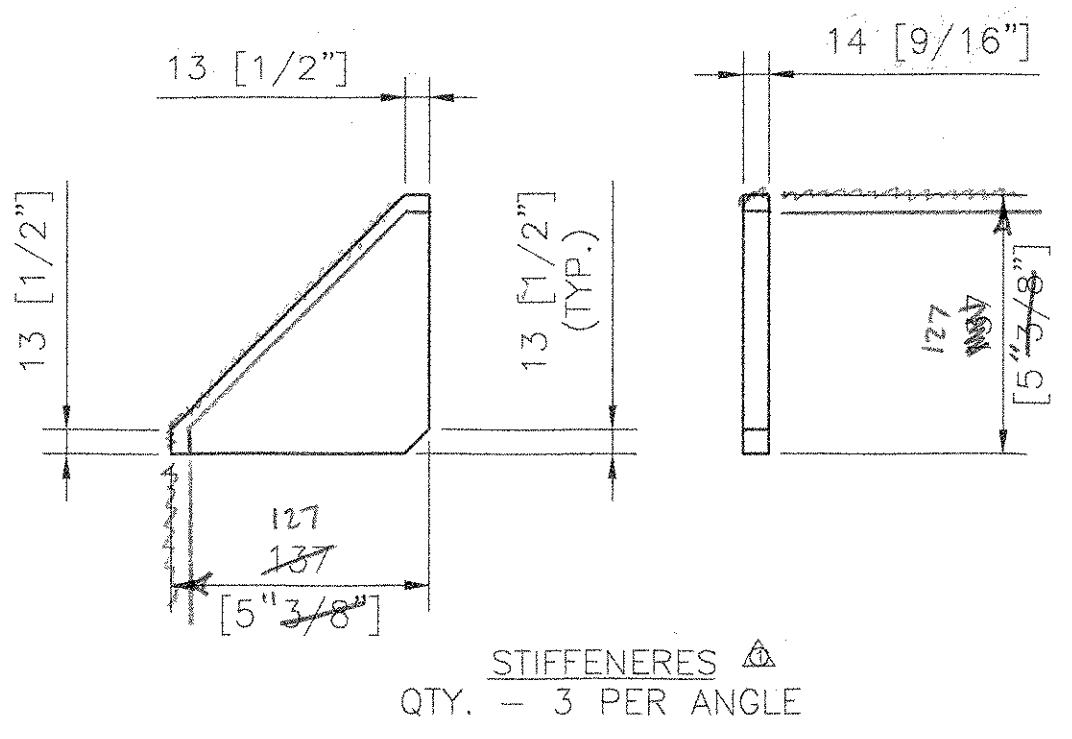


FIXED ROCKER BEARING
LOCATION - ABUTMENT 1, G1-G5
QUANTITY - 5
RDL = 414.65 KN[93.22 KIPS]
RLL = 282.63 KN[63.54 KIPS]
DESIGN ROTATION - 0.18 RADS.



MATERIAL:
STEEL - ASTM A709M GR. 345 ZINC METALIZED (SEE NOTE 2). THE CURVED CONTACT SURFACES SHALL NOT BE METALIZED.
ELASTOMER - AASHTO 50 DUROMETER NEOPRENE GRADE 3
STEEL SHIMS - ASTM A1011 GR. 36 OR GR. 40 GR. 250 [36] OR GR. 275 [40]
PREFORMED FABRIC PAD - AASHTO SPEC. 18.4.10.1 DIV. II

- NOTES:
1. UNITS: mm[INCH]
2. ALL STEEL COMPONENTS SHALL BE METALIZED AS PER SECTION 531.04(b) AND 506.15. AFTER THE BEARINGS ARE METALIZED, THEY SHALL BE SEALED WITH AN APPROVED PRIMER AS SPECIFIED IN SUBSECTION 506.15(c).
3. ANCHOR BOLTS, NUTS AND WASHERS SHALL BE GALVANIZED PER AASHTO M232.
4. LOCATION OF FABRICATION PLANT - 70 SOUTH ST., WALPOLE, MA 02081
5. COSMEC INC. REPRESENTATIVE - MR. MATT McANDREWS (508-668-6600)
6. SEAL WELDS WHERE POSSIBLE.
7. Prior to installation, all corners and edges of steel plates and shims shall be ground to 16mm radius.



RECEIVED
OK'D BY: WISS OK'D BY: RST
AUG 15 2002
RESUBMIT APPROVED: [Signature]
BY: CPW DATE: 5/19/02

STATE OF VERMONT
AGENCY OF TRANSPORTATION
PROJECT NAME: BARTON
PROJECT NO.: AC STP 0113 (58) S
STRUCT COPY
COSMEC, INC. 70 SOUTH STREET WALPOLE, MA. 02081
SCALE: 3.175mm=25.4mm DRAWN BY: NH CHECKED BY: MCM
SHEET: 1 OF 1 DATE: 7.22.02 DATE: 7.30.02
COSMEC BEARINGS
CUSTOMER: WINTERSET S.O. NUMBER: 59586 DRAWING NUMBER: 3684 REV: 1

REV.	REVISED: mm[INCH] WAS INC[mm]	BY	DATE	OK'D	DATE
1		NH	8.12.02		